



[Manuals.plus](#) /

> [Riseon](#) /

> Riseon 7500W Electric Garage Heater with WIFI & Remote (Model CZ230ERW) Instruction Manual

## Riseon CZ230ERW

# Riseon 7500W Electric Garage Heater with WIFI & Remote (Model CZ230ERW) Instruction Manual

Model: CZ230ERW | Brand: Riseon

[Safety Information](#)   [Setup &](#)

[Installation](#)

[Operation](#)

[Maintenance](#)

[Troubleshooting](#)

[Specifications](#)

[Warranty & Support](#)

## SAFETY INFORMATION

Please read all instructions carefully before installing or operating this heater. Failure to follow these instructions may result in electric shock, fire, property damage, or personal injury.

- This 240V heater requires hardwired installation by a qualified electrician. It must be grounded and connected to a properly sized current protection circuit breaker that meets U.S. National Electrical Code and local codes.
- Do not operate the heater with a damaged cord or plug, or after the heater malfunctions or has been dropped or damaged in any manner.
- Do not use outdoors. This heater is intended for indoor use only.
- Keep combustible materials, such as furniture, pillows, bedding, papers, clothes, and curtains at least 3 feet (0.9 m) from the front of the heater and keep them away from the sides and rear.
- To prevent a possible fire, do not block air intakes or exhaust in any manner. Do not use on soft surfaces, like a bed, where openings may become blocked.
- This heater has hot and arcing or sparking parts inside. Do not use it in areas where gasoline, paint, or flammable vapors or liquids are used or stored.
- Always unplug the heater when not in use.
- The heater is equipped with an overheat protection feature that automatically cuts power if internal temperatures exceed safe limits.

## SETUP & INSTALLATION

This section provides instructions for the proper installation of your Riseon Electric Garage Heater. Due to the hardwired

nature of this appliance, professional installation by a qualified electrician is strongly recommended to ensure safety and compliance with electrical codes.

## Installation Steps Overview

The installation process involves connecting the wiring, locating the heater, mounting the bracket, hanging the heater, and adjusting the louvers. Please refer to the detailed steps and visual aids below.

Your browser does not support the video tag.

**Video:** Riseon Electric Garage Heater Installation Guide. This video demonstrates the step-by-step process for installing the heater, including wiring, mounting, and final adjustments.

### Step 1: Connecting the Wire

1. **Remove the bottom panel:** Turn off the power at the circuit breaker. Remove all screws from the bottom panel to access the wiring compartment.
2. **Open a cutout:** Choose a suitable side for wiring entry and open the designated cutout.
3. **Prepare wires:** For 7500W and 10000W models, use the provided copper tips for better conductivity. For 5000W models, copper tips are excluded.
4. **Connect wires:** Connect the power wires to the power block as instructed in the wiring diagram. Ensure proper grounding. *Note: Hard wire accessories are not included.*
5. **Tighten connections:** Torque all terminal screws and power block lugs tightly with the required torque (40 in-lbs).
6. **Close the panel:** Close the bottom panel and tighten the screws.



**Image:** Wiring diagram and connection points for the heater. This image illustrates the internal wiring connections and the importance of securing them properly.



**Image:** The heater unit with its remote control, showing the control panel. This image highlights the external controls and the remote for convenient operation.

## Step 2: Locating the Heater

Choose a suitable location for mounting the heater. Ensure there is adequate clearance around the unit for safe operation and optimal heat distribution.

- Maintain a minimum distance of 8 inches from the side of the heater to any adjacent walls or obstructions.
- Maintain a minimum distance of 13 inches from the front of the heater to any adjacent walls or obstructions.

## Step 3: Mounting the Bracket

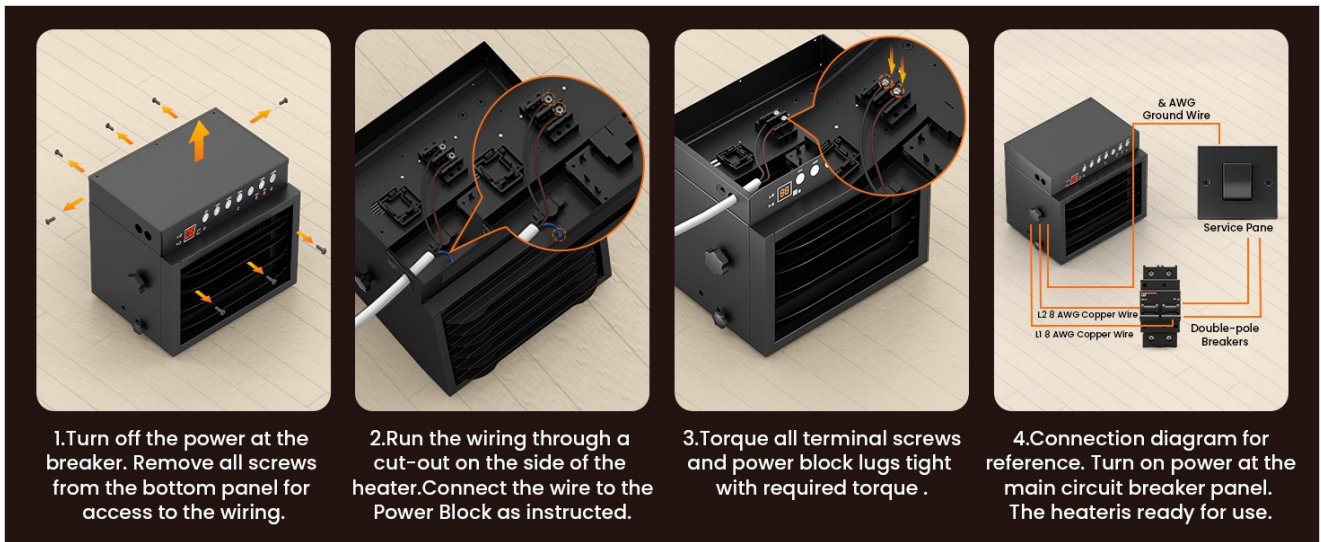
1. **Drill pilot holes:** Drill two pilot holes in the ceiling at the desired mounting location, ensuring they align with the bracket holes.
2. **Place washers:** Place a washer on each screw.
3. **Secure bracket:** Screw the bracket securely into the ceiling using appropriate fasteners for your ceiling type.

## Step 4: Hanging the Heater

1. **Align lower bracket holes:** Align the lower bracket holes of the heater with the corresponding holes on the mounted ceiling bracket.
2. **Align upper bracket holes:** Align the upper bracket holes of the heater with the corresponding holes on the mounted ceiling bracket.
3. **Use keyhole slots:** Utilize the keyhole slots for adjusting the heater's angle.

## Step 5: Adjusting Louvers

Adjust the louvers to direct the airflow to your desired area. This allows for precise heat distribution within your space.



**Image:** Close-up of the heater's adjustable louvers, demonstrating how they can be angled to direct heat. This feature allows for customized heating zones.

## OPERATION

Your Riseon Electric Garage Heater offers multiple control options for convenience and efficiency.

### Control Options

- **LED Touch Screen:** Directly control settings on the unit's integrated LED touch screen.
- **Remote Control:** Use the included remote control for convenient adjustments from a distance.
- **Tuya APP (WIFI models only):** For models with WIFI, download the Tuya APP to control the heater remotely from your smartphone.



**Image:** A smartphone displaying the Tuya app interface, controlling the heater. This image demonstrates the remote control capability via the app.

Your browser does not support the video tag.

**Video:** Riseon Garage Heater with APP Control. This video illustrates how to connect the heater to the Tuya app and control its various functions, including power, heating levels, timer, and ECO mode settings.

## Key Features

- **Power Settings:** Choose from three power settings: 7500W (High), 6250W (Low), and Fan Only mode.

- **ECO Mode:** The precision temperature sensor automatically adjusts operation for optimal energy efficiency. Activate ECO mode via the control panel, remote, or app.
- **Programmable Timer:** Set a timer for 1-12 hours to schedule heating sessions and manage energy consumption.
- **Thermostat:** Adjust the desired temperature using the built-in thermostat. The heater will maintain the set temperature.
- **Overheat Protection:** For safety, the system automatically cuts power if it detects overheating risks.
- **Temperature Unit Conversion:** Switch between Fahrenheit (°F) and Celsius (°C) as preferred.



**Image:** A graph illustrating the power consumption in ECO mode compared to standard operation. This visual demonstrates how ECO mode optimizes energy usage by cycling power.

## MAINTENANCE

Regular maintenance ensures the longevity and efficient operation of your Riseon Electric Garage Heater. Always disconnect the power before performing any maintenance.

- **Cleaning:** Periodically clean the exterior of the heater with a soft, damp cloth. Do not use abrasive cleaners or solvents. Ensure the heater is completely dry before reconnecting power.
- **Dust Removal:** Use a vacuum cleaner with a brush attachment to remove dust and debris from the air intake and exhaust grilles. This helps maintain optimal airflow and heating efficiency.
- **Inspection:** Regularly inspect the power connections and wiring for any signs of wear, damage, or loose connections. If any issues are found, contact a qualified electrician for repair.
- **Storage:** If storing the heater for an extended period, ensure it is clean and dry. Store it in a cool, dry place away from direct sunlight and moisture.

## TROUBLESHOOTING

If you experience issues with your Riseon Electric Garage Heater, refer to the following common troubleshooting steps. If the problem persists, contact customer support.

Problem	Possible Cause	Solution
Heater does not turn on.	No power supply, circuit breaker tripped, or power switch off.	Check the circuit breaker and ensure it is not tripped. Verify the heater's power switch is in the ON position. Confirm proper hardwired connection.

Problem	Possible Cause	Solution
Heater stops unexpectedly.	Overheat protection activated, or timer function engaged.	Allow the heater to cool down. Check for obstructions around the heater. Verify if the timer function is set to turn off the unit.
Insufficient heating.	Incorrect power setting, louvers misdirected, or room size too large.	Ensure the heater is set to a higher power mode (e.g., 7500W). Adjust louvers to direct heat effectively. Confirm the heater's capacity matches the room size (up to 1250 sq ft).
Remote control not working.	Dead batteries, or remote not pointed correctly.	Replace the batteries in the remote control. Ensure the remote is pointed directly at the heater's receiver.
WIFI/App connection issues.	Incorrect WIFI password, poor signal, or app not properly configured.	Verify your WIFI password. Ensure the heater is within range of your WIFI router. Follow the Tuya app's pairing instructions carefully.

## SPECIFICATIONS

Detailed technical specifications for the Riseon 7500W Electric Garage Heater (Model CZ230ERW).

Feature	Detail
Brand	Riseon
Model Number	CZ230ERW
Power Output	7500W / 6250W (3 power settings including fan only)
Voltage	240V / 60Hz
Heat Output (BTU)	25,590 BTU
Heating Coverage	Up to 1250 square feet
Fuel Type	Electric
Special Features	Adjustable Temperature, WIFI & Remote Control, ECO Mode, 12H Timer, Thermostat, Overheat Protection, Adjustable Louvers
Color	Black
Form Factor	Square, Ceiling Mount
Indoor/Outdoor Usage	Indoor
Max Temperature Setting	95 Degrees Fahrenheit
Product Dimensions	14.4 x 10.6 x 18.6 inches
Item Weight	26.5 pounds
Certifications	ETL Certified

Feature	Detail
Recommended Circuit Breaker	40A
Recommended Wire Size	#8 AWG Wire, 75°F Copper
Recommended Lug Torques	40 in-lbs

---

## WARRANTY & SUPPORT

For warranty information, technical support, or service inquiries, please contact Riseon customer service. Keep your purchase receipt and model number handy for faster assistance.

Optional protection plans are available for purchase, offering extended coverage beyond the standard manufacturer's warranty. These plans typically cover repairs or replacements for a specified duration.

- **3-Year Protection Plan:** Available for purchase.
- **4-Year Protection Plan:** Available for purchase.
- **Complete Protect:** Monthly subscription plan covering eligible past and future purchases.

For specific terms and conditions of these protection plans, please refer to the plan provider's documentation.

---