

Manuals+

[Q & A](#) | [Deep Search](#) | [Upload](#)

manuals.plus /

› [MAXDONE](#) /

› [MAXDONE 4K Night Vision Goggles User Manual](#)

MAXDONE 4K Night Vision Goggles

MAXDONE 4K Night Vision Goggles User Manual

Model: 4K Night Vision Goggles

Brand: MAXDONE

1. INTRODUCTION

Thank you for choosing the MAXDONE 4K Night Vision Goggles. This device is designed to provide clear vision in low-light and total darkness conditions, making it ideal for various outdoor activities such as camping, hunting, wildlife observation, and security. Please read this manual thoroughly before using the device to ensure proper operation and to maximize its performance and lifespan.

The MAXDONE 4K Night Vision Goggles feature a 2025 Starlight Sensor, 4K Ultra-HD clarity, 8X digital zoom, and a 5000mAh fast-charging battery, offering a viewing range of up to 1968 feet (600 meters).

2. WHAT'S IN THE BOX

Upon opening your MAXDONE Night Vision Goggles package, please verify that all the following items are included:

- 1x MAXDONE 4K Night Vision Goggles
- 1x Carrying Bag
- 1x Type-C Charging Cable
- 1x 32GB TF Card (pre-installed or separate)
- 1x Cleaning Cloth
- 1x Protective Storage Box
- 1x Neck Strap

Package List



Fabric case



Portable Bag



Night Vision



Portable Bag



Cleaning Cloth



32GB Card



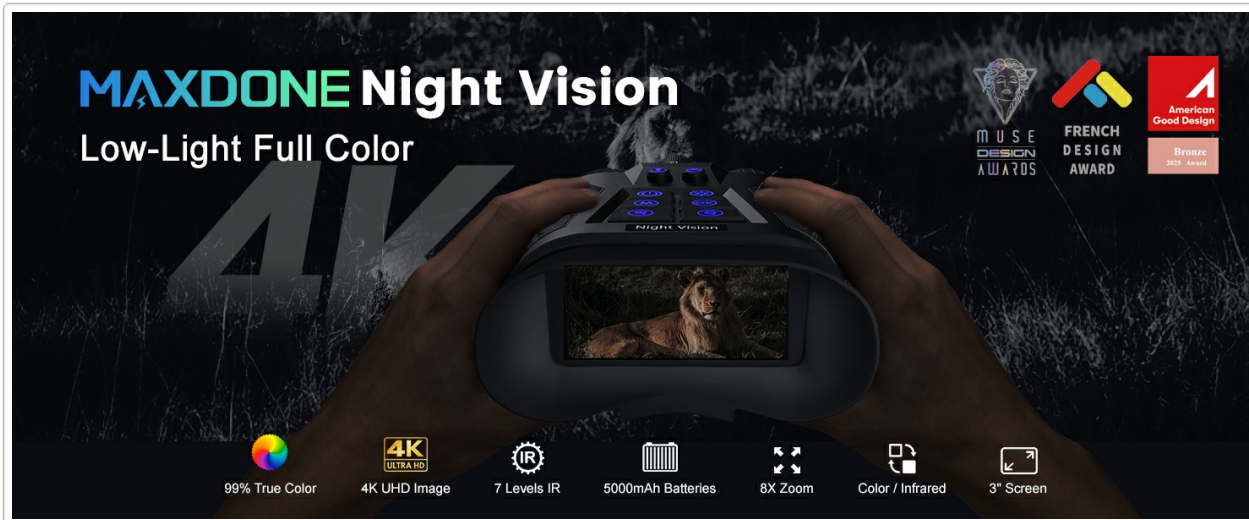
Type-C Cable

All items included in the MAXDONE Night Vision Goggles package: goggles, case, strap, cable, card, and cleaning cloth.

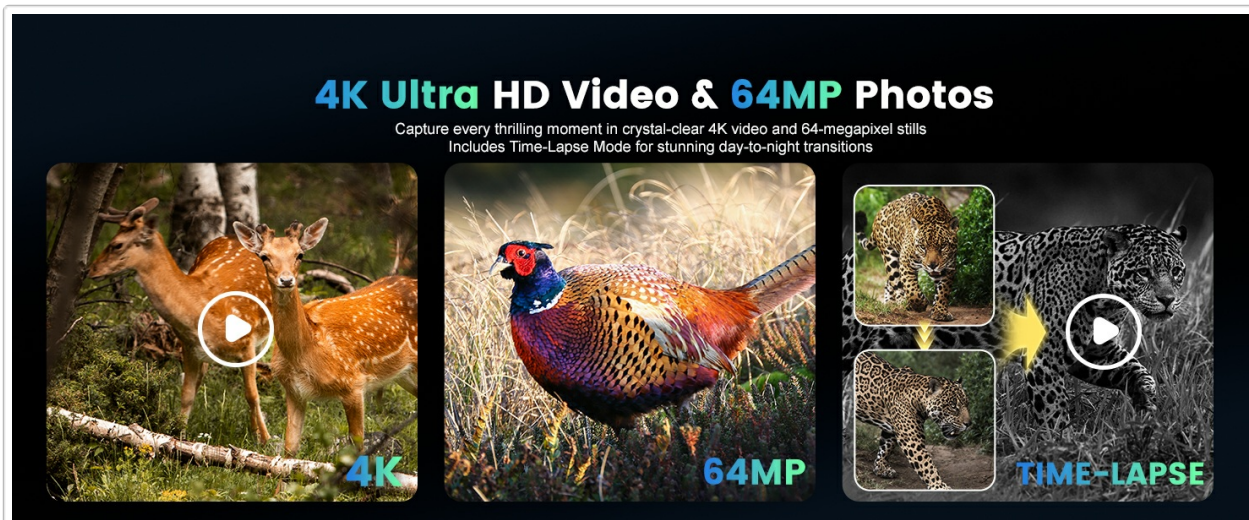
3. KEY FEATURES

- **2025 Starlight Sensor:** Equipped with MAXDONE's enhanced starlight-grade sensor, this device captures clear, true-color images even in low-light environments, providing improved brightness and detail visibility.
- **600m Viewing Distance & 8x Digital Zoom:** The adjustable zoom lens supports viewing distances of up to approximately 600 meters (under ideal conditions), allowing users to observe distant objects and fine details.
- **4K Ultra-HD Clarity:** The 4K imaging technology provides high-definition visuals with visible fine details in both day and night conditions. Seven adjustable infrared levels allow flexible switching between color and black-and-white viewing modes.
- **Long-Lasting Power:** Built-in 5000 mAh rechargeable battery supports up to approximately 12 hours of operation (based on typical usage and lighting conditions), suitable for extended outdoor or surveillance activities.
- **Multi-Purpose Design:** Features an integrated light, microphone, and speaker for illumination, audio recording, and playback. The glow-in-the-dark buttons enhance usability and make operation convenient.

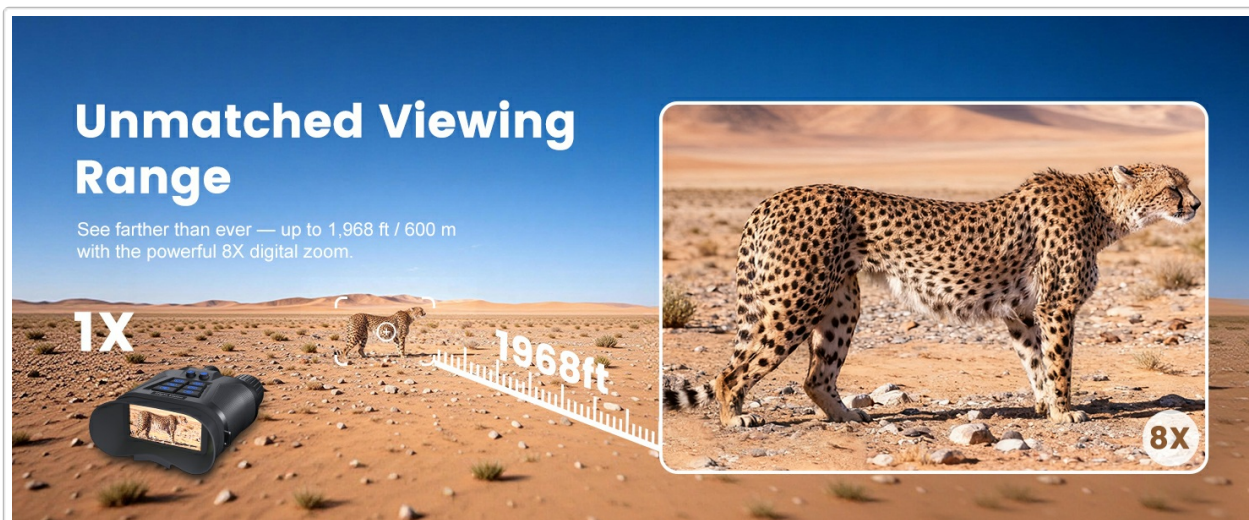
in dark environments.



An infographic detailing the main features: AI-ISP, 64MP photo, 4K UHD resolution, 99% color reproduction, color/infrared dual mode, 1968ft range, and 5000mAh battery.



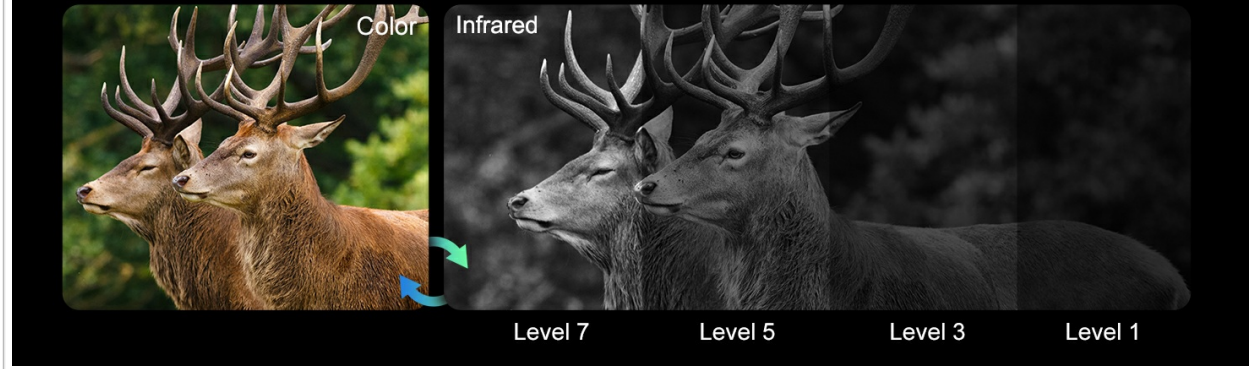
A visual comparison showing vivid color vision during the day and crystal-clear infrared vision at night, highlighting the 64MP image and 4K video capabilities.



An illustration of the Starlight CMOS sensor's ability to see clearly in total darkness, with examples of different infrared illumination levels (1, 3, 5, 7).

Color/Infrared 7 IR Levels

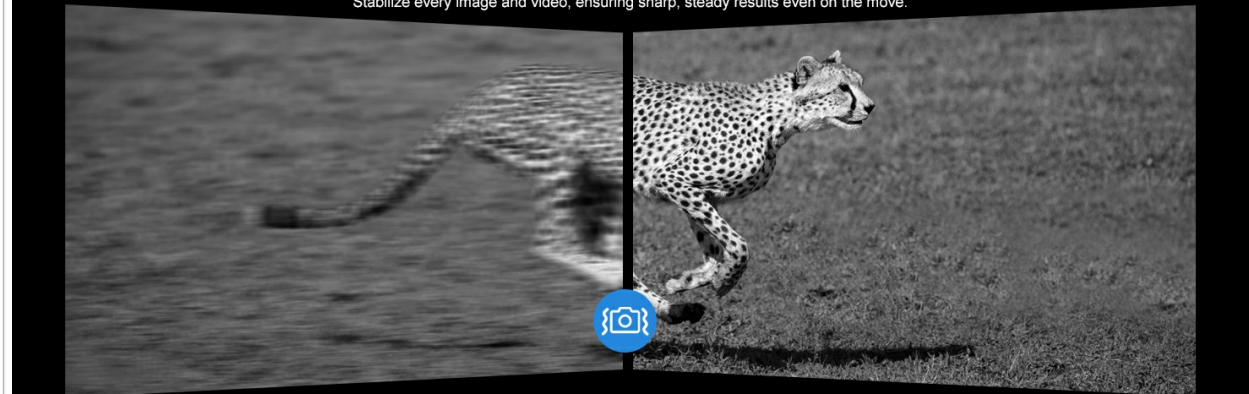
See clearly — near or far. Choose the perfect IR brightness for every level of darkness.



Demonstration of the 8X digital zoom, showing how the device can view distant objects more closely on its 3.0-inch display.

Anti-Shake for Perfect Shots

Stabilize every image and video, ensuring sharp, steady results even on the move.



Information on the long-lasting 5000mAh rechargeable battery, providing up to 12 hours with IR off and 18 hours with IR on, charged via Type-C.

Larger CMOS sensor Sharper Night Vision

The upgraded large CMOS sensor delivers brighter, more detailed night vision images with reduced noise and true-to-life contrast

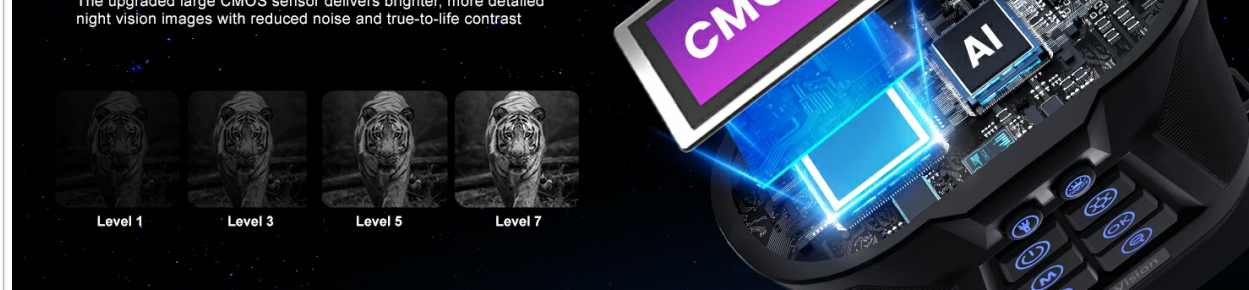


Illustration of the powerful built-in light, offering both constant and strobe modes for illumination.



Examples of common uses for the night vision goggles, including security, wildlife observing, camping, hiking, hunting, and fishing.

4. SETUP

1. **Charge the Battery:** Before first use, fully charge the built-in 5000mAh battery using the provided Type-C cable and a compatible USB power adapter (not included). The charging indicator will show progress.
2. **Insert TF Card:** Locate the TF card slot (usually under a protective cover). Insert the included 32GB TF card with the gold contacts facing down until it clicks into place. This card is essential for saving photos and videos.
3. **Power On:** Press and hold the power button (usually marked with a power symbol) for a few seconds until the display screen illuminates.
4. **Adjust Eyepiece:** Adjust the eyepiece diopter (if available) to match your vision for a clear view of the internal display.
5. **Focus the Lens:** Rotate the objective lens ring to focus on your target object until it appears sharp on the display.

5. OPERATING INSTRUCTIONS

5.1 Basic Operation

- **Power On/Off:** Press and hold the power button.
- **Mode Selection:** Use the 'M' (Mode) button to switch between Photo, Video, and Playback modes.
- **Zoom:** Use the '+' and '-' buttons (often marked with magnifying glass icons) to adjust the digital zoom level (up to 8X).
- **IR Adjustment:** In night vision mode, press the IR button (often marked with a sun/moon or IR symbol) to cycle through the 7 infrared illumination levels. Higher levels provide brighter vision in darker conditions but consume more battery.

5.2 Photo Mode

1. Switch to Photo mode using the 'M' button.
2. Frame your subject on the display.
3. Press the 'OK' or Shutter button to capture a photo.

5.3 Video Mode

1. Switch to Video mode using the 'M' button.
2. Press the 'OK' or Record button to start recording. A red dot or timer will appear on the screen.
3. Press the 'OK' or Record button again to stop recording.

5.4 Playback Mode

1. Switch to Playback mode using the 'M' button.
2. Use the navigation buttons (up/down or left/right arrows) to browse through your saved photos and videos.
3. Press 'OK' to view a photo or play a video.
4. To delete files, navigate to the desired file and press the 'Menu' button, then select the delete option.

5.5 Menu Settings

Press the 'Menu' button to access settings. Use navigation buttons to scroll and 'OK' to select. Settings may include:

- Resolution (Photo/Video)
- Date/Time Stamp
- Language
- Auto Power Off
- Format TF Card

5.6 Official Product Videos

Watch these official videos for a visual guide on using your MAXDONE Night Vision Goggles:

An official product video demonstrating the night vision capabilities, 8X zoom, and fast-charging 5000mAh battery of the MAXDONE Goggles.

A short official video highlighting the night vision binoculars and their 5000mAh fast-charging battery.

An official video showcasing the 2025 Starlight Sensor technology in the MAXDONE Night Vision Goggles.

6. MAINTENANCE

- **Cleaning Lenses:** Use the provided cleaning cloth or a soft, lint-free cloth to gently wipe the lenses. Avoid using abrasive materials or harsh chemicals.
- **Storage:** When not in use, store the goggles in the protective storage box in a cool, dry place, away from direct sunlight and extreme temperatures.
- **Battery Care:** To prolong battery life, avoid fully discharging the battery frequently. Charge the device regularly, even if not in use for extended periods.
- **TF Card Management:** Periodically back up your photos and videos to a computer and format the TF card to maintain optimal performance.

7. TROUBLESHOOTING

- **Device not powering on:** Ensure the battery is fully charged. If the issue persists, try charging with a different Type-C cable or power adapter.
- **Poor image quality:** Check if the objective lens is focused correctly. Ensure the lenses are clean. In night vision mode, adjust the IR illumination level.
- **Cannot save photos/videos:** Verify that the TF card is correctly inserted and not full. Try formatting the TF card (this will erase all data).
- **Buttons unresponsive:** Try restarting the device. If unresponsive, allow the battery to fully drain and then recharge.

8. SPECIFICATIONS

Feature	Specification
Model	4K Night Vision Goggles
Sensor	2025 Starlight Sensor
Resolution	4K Ultra-HD (Video), 64MP (Photo)

Feature	Specification
Digital Zoom	8X
Viewing Range	Up to 1968 ft (600 m)
Infrared Levels	7 adjustable levels
Battery	Built-in 5000mAh rechargeable battery
Battery Life	Approx. 12 hours (IR off), 18 hours (IR on)
Charging Port	Type-C USB
Storage	32GB TF Card (included)
Special Features	Integrated light (constant/strobe), microphone, speaker, glow-in-the-dark buttons
Item Weight	2.68 pounds
Package Dimensions	8.19 x 7.83 x 3.58 inches

9. WARRANTY AND SUPPORT

MAXDONE provides ongoing support to assist with product setup and technical inquiries. For warranty information, please refer to the warranty card included in your package or visit the official MAXDONE website. If you encounter any issues or have questions, please contact our customer support team through the contact details provided with your purchase or on our website.