

OLIXIS 3611V3OLT

OLIXIS Metal Twin Bed Frame Instruction Manual

Model: 3611V3OLT

INTRODUCTION

This manual provides detailed instructions for the assembly, operation, maintenance, and troubleshooting of your OLIIXIS Metal Twin Bed Frame. Please read all instructions carefully before assembly and use to ensure safe and proper functionality.

SAFETY INFORMATION

While assembling, be cautious with small parts to prevent choking hazards. Handle with care due to the heavy weight of the product. Ensure all screws are tightened securely to prevent instability. Do not exceed the maximum weight capacity of 800 LBS.

SETUP AND ASSEMBLY

The OLIIXIS Metal Twin Bed Frame is designed for easy and quick assembly. All necessary tools and instructions are included in the package. A video guide is also available to assist with the installation process.

Assembly Steps:

- Unpack Components:** Lay out all parts and verify against the included parts list.
- Expand Frame:** Fully expand the main frame components.
- Attach Side and Middle Frames:** Attach Side Frame (B)*2 to the four corners of the Frame (A)*2 and insert Middle Frame (E)*1 onto the groove in the middle of the Frame (A)*2. Lightly tighten with Screws (G)*10. *Note: Fully expand the frame before installing the screws. Otherwise, the screw cannot be twisted in. The screws are tightened by 50% first.*
- Insert Center Slats:** Insert two Center Slat (C)*2 together. After fixing both sides to the Side Frame (B)*2 with the Screws (G)*2, then fix the Center Slats (C)*2 to the Middle Frame (E)*1 with Screw (H)*1.
- Install Slats:** Insert Slats (D)*24 evenly onto each groove of the Frames (B&E).
- Final Tightening:** Once installation is complete, tighten all screws 100%. Tighten the screws at 4 corners of the bed with Wrench (F).

TWIN SIZE

No

Box Spring Needed



Designed for users up to 800 pounds

Image: All components of the OLIXIS Metal Twin Bed Frame laid out for assembly.



Image: Close-up of the integrated and easy lock features for simplified assembly.

Your browser does not support the video tag.

Video: Step-by-step guide on how to set up the OLIXIS Metal Bed Frame.

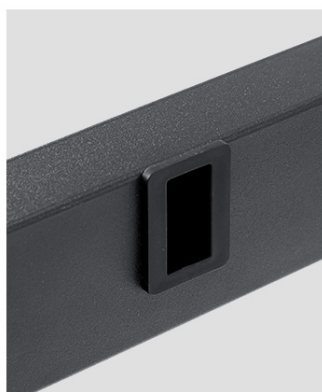
OPERATING INSTRUCTIONS

This bed frame is designed to support a twin-sized mattress without the need for a box spring. Its sturdy steel slat support system can withstand up to 800 LBS, providing a stable foundation for your mattress.

- **No Box Spring Needed:** The robust steel slats eliminate the requirement for a traditional box spring, allowing your mattress to be placed directly on the frame.
- **Weight Capacity:** The frame is engineered to support up to 800 LBS, ensuring durability and stability for various users.
- **Under-Bed Storage:** The 14-inch height of the bed frame provides approximately 12 inches of clearance underneath, offering ample space for storage containers and helping to reduce room clutter.



Image: Diagram showing the dimensions of the Twin bed frame and its 800 LBS weight capacity.



Reinforced stable steel

After multiple security tests, suitable for heavy duty users



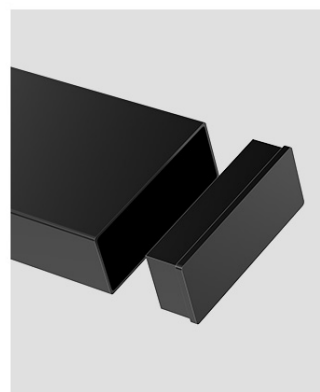
Strong slats support

Safe to use and provides you with a deep sleep



Upgraded metal platform

Prevents the bed frame from shaking and creaking when turning over



Floor protection

Anti-slip foot pads Prevent scratches and movements

Image: Illustration of the spacious 12-inch under-bed storage area.

MAINTENANCE

- **Screw Tightening:** To maintain optimal stability and prevent squeaking, re-tighten all assembly screws every 3 months.
- **Cleaning:** The smooth metal surface is easy to clean and stain resistant. Wipe down the frame with a damp cloth as needed. Avoid abrasive cleaners that may damage the finish.
- **Floor Protection:** The bed frame includes floor protection layers on the legs to prevent scratches and movement. Ensure these are intact and properly positioned.



Image: Details highlighting the sturdy steel slats, stable metal structure, and floor protection features.

TROUBLESHOOTING

Problem	Possible Cause	Solution
---------	----------------	----------

Problem	Possible Cause	Solution
Bed frame squeaks or rocks	Loose screws or uneven assembly.	Ensure all screws are fully tightened. Re-tighten screws every 3 months. Verify that the frame is assembled on a flat, even surface.
Difficulty inserting screws during assembly	Frame not fully expanded or misaligned.	Ensure the frame is fully expanded before attempting to tighten screws. Refer to the assembly video for proper alignment.
Mattress slipping	No specific mattress stopper or anti-slip feature mentioned.	Consider placing an anti-slip mat between the mattress and the slats if slipping occurs.

SPECIFICATIONS

Brand: OLIXIS

Model Number: 3611V3OLT

Size: Twin

Product Dimensions: 75"L x 39"W x 14"H

Material: Metal, Steel

Color: Black

Weight Capacity: 800 LBS

Ground to Item Distance: 14 Inches

Assembly Required: Yes (Tools and video guide included)

Special Feature: Sturdy Steel, Under-bed storage, No Box Spring Needed

UPC: 720314571811

WARRANTY AND SUPPORT

Specific warranty information is not provided in the product details. For any warranty claims or further support, please refer to the manufacturer's official website or contact their customer service directly using the contact information provided at the point of purchase.