

AWESAFE 4 Core 2+32GB

AWESAFE 5GWiFi Android 13 Car Stereo Instruction Manual

FOR TOYOTA TUNDRA 2007-2013 AND TOYOTA SEQUOIA 2008-2018

Model: 4 Core 2+32GB

1. INTRODUCTION

This manual provides detailed instructions for the installation, setup, and operation of your AWESAFE 5GWiFi Android 13 Car Stereo. This unit is specifically designed for seamless integration into Toyota Tundra models from 2007 to 2013 and Toyota Sequoia models from 2008 to 2018. It features a 10-inch touch screen display, 2GB RAM, 32GB ROM, and an Octa-Core CPU for optimal performance. Key functionalities include wireless CarPlay, Android Auto, GPS navigation, Bluetooth, and Wi-Fi connectivity.

2. SAFETY INFORMATION

Products of this manufacturer recommend that you do not install or repair their navigation systems by yourself. Installation and maintenance of this product may cause you to danger of electric shock or short. For all installation and maintenance operations of this navigation system, please entrust it to the service center authorized by the manufacturer.

3. WHAT'S IN THE BOX

The package includes all necessary components for installation and operation:

- AWESAFE Android 13 Car Stereo Head Unit (10-inch display)
- Power Cable (with CANBUS adapter)
- RCA Cable
- Reversing Line
- USB Cables (multiple)
- GPS Module
- Microphone
- Crowbar (trim removal tool)
- Screwdriver
- Installation Manual

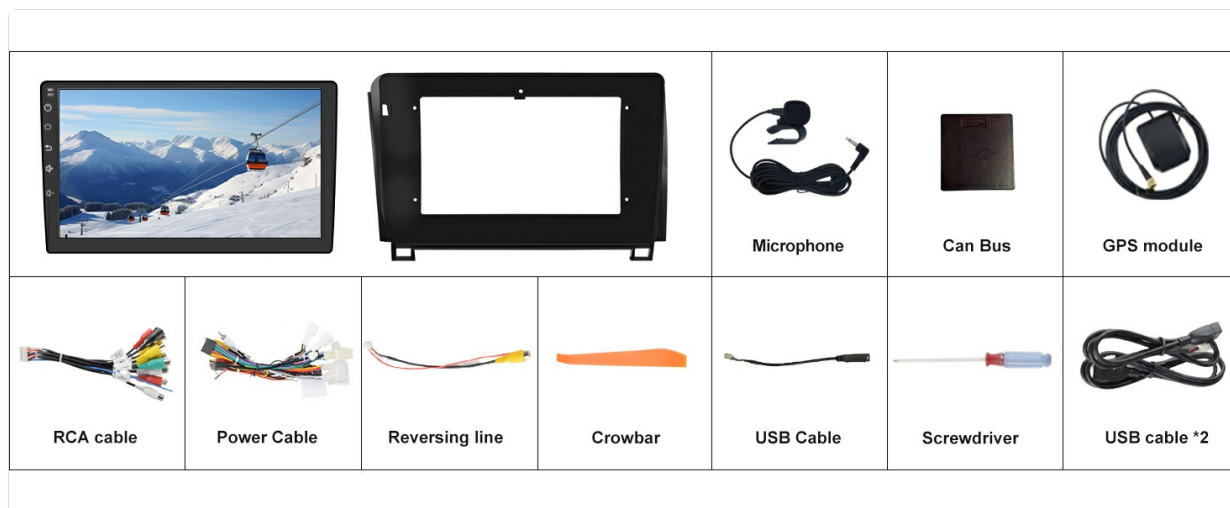


Figure 3.1: All components included in the AWESAFE Car Stereo package.

4. INSTALLATION GUIDE

This section outlines the steps to install your new AWESAFE Car Stereo. A complete plug-and-play kit is provided to ensure compatibility with your vehicle's existing systems.

4.1 Step 1: Remove the Original Stereo

1. Carefully remove the dashboard trim using the provided crowbar tool.
2. Unscrew and take out the factory stereo.
3. Disconnect all original wiring plugs from the factory stereo.



Figure 4.1: Comparison of the dashboard before and after installing the AWESAFE Car Stereo.

4.2 Step 2: Connect the New Stereo

Connect the provided wiring harness and accessories to the new head unit. Ensure all connections are secure before proceeding.

- Plug in the main power harness and CANBUS adapter.
- Connect the GPS antenna, 4G antenna, and Wi-Fi antenna to their respective ports.
- Connect the RCA cables, USB cables, and microphone.
- If applicable, connect your aftermarket backup camera to the 'CAM IN' input and the reversing line.

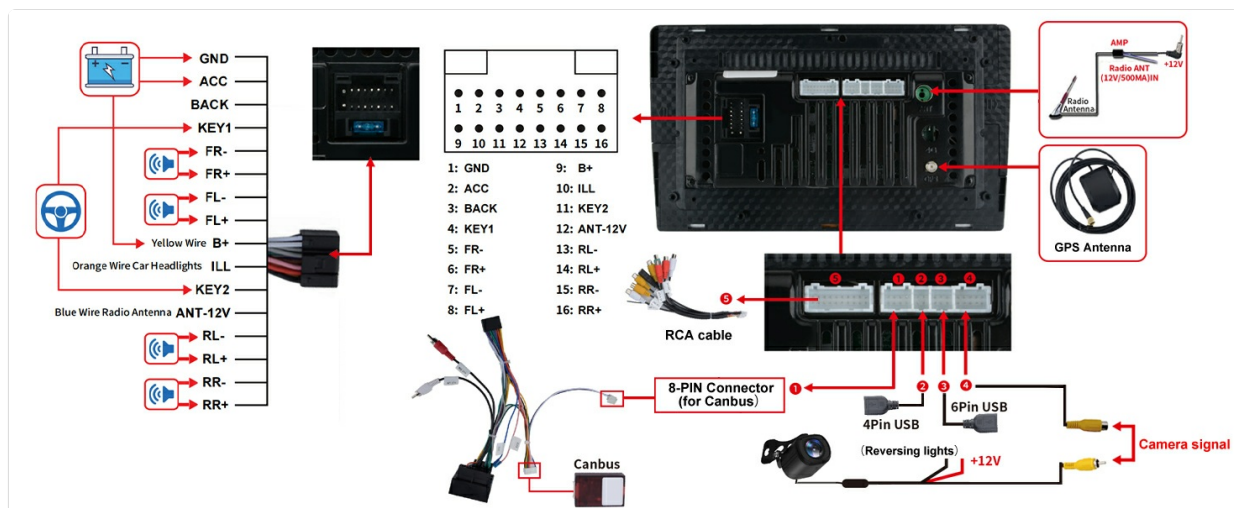


Figure 4.2: Detailed wiring diagram for the AWESAFE Car Stereo connections.

4.3 Step 3: Mount and Finish

Carefully re-install the new head unit into the dashboard. Ensure all clips and screws are properly secured for a stable fit.

- Transfer the original car clips from your factory stereo to the new head unit. These are crucial for secure mounting.
- Align the new head unit with the dashboard opening and gently push it into place until it clicks.
- Reinstall any removed dashboard trim pieces.

Video 4.1: Step-by-step guide on installing the AWESAFE Car Stereo in a Toyota Tundra.

5. INITIAL SETUP

After successful installation, power on the unit and proceed with the initial setup steps.

5.1 Wi-Fi Connection

1. From the home screen, tap the 'Settings' gear icon.
2. Select 'Network & Internet', then toggle Wi-Fi 'On'.
3. Choose your desired Wi-Fi network and enter the password if prompted.
4. Once connected, check for system updates under 'System' > 'System updates' > 'Check for updates'.



Figure 5.1: The car stereo's display showing various Wi-Fi enabled applications.

5.2 Bluetooth Pairing

1. From the home screen, tap the 'Bluetooth' icon.
2. Go to the 'Settings' gear icon within the Bluetooth interface.
3. On your mobile device, enable Bluetooth and search for 'CAR-KIT'.
4. Enter the PIN '0000' on your mobile device to pair.



Figure 5.2: The car stereo displaying Bluetooth phone and music functionalities.

5.3 Wireless CarPlay and Android Auto

The unit supports both wireless CarPlay and Android Auto for seamless smartphone integration.

1. Ensure your phone is paired via Bluetooth (see 5.2).
2. From the home screen, tap the 'CarPlay' or 'Android Auto' icon.
3. Follow the on-screen prompts to complete the connection.

Video 5.1: Instructions on how to connect wireless CarPlay to the car stereo.

Video 5.2: Instructions on how to connect wireless Android Auto to the car stereo.

5.4 Steering Wheel Controls

The unit retains your factory steering wheel controls. To configure them:

1. Go to 'Settings' > 'CAR' > 'Steering wheel keys'.
2. Follow the on-screen instructions to program each button by pressing the physical button on your steering wheel and then selecting the corresponding function on the screen.

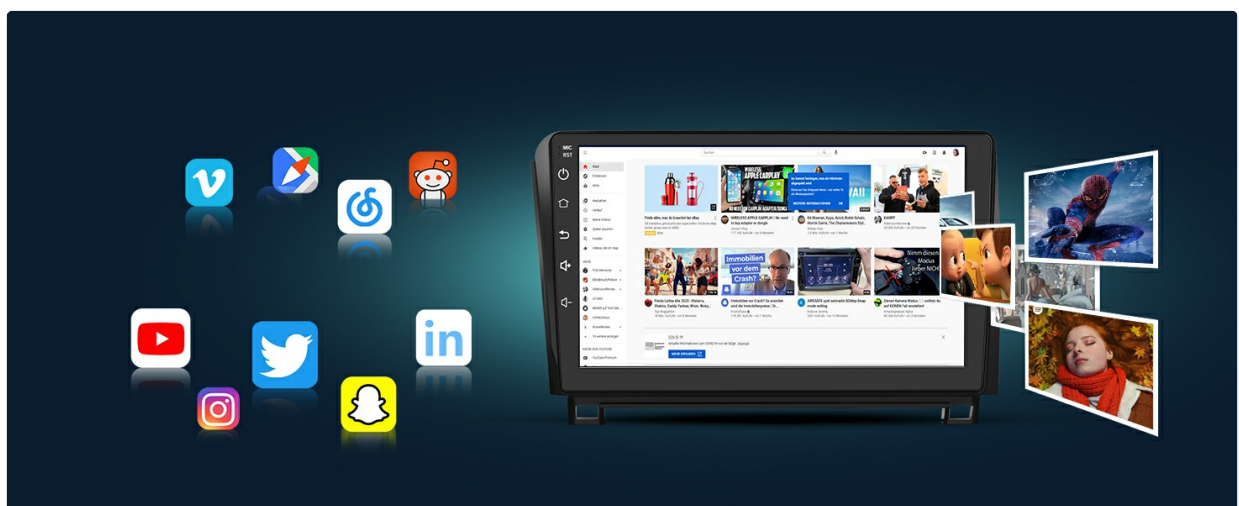


Figure 5.3: The car stereo interface for configuring steering wheel controls.

6. OPERATING INSTRUCTIONS

This section covers the basic operation of your AWESAFE Car Stereo.

6.1 FM/AM Radio

Access the 'Radio' application from the home screen. You can tune to your favorite stations, save presets, and utilize RDS tuner radio for the latest news.

6.2 Music Playback

Use the 'Music' application to play audio files stored on the device or connected USB drives. Bluetooth connectivity allows for wireless music streaming from your smartphone.

6.3 GPS Navigation

The 'Navi' application provides GPS navigation. You can download global map data packages for offline use or use online maps when connected to Wi-Fi. The system supports various Android navigation apps.



Figure 6.1: The car stereo displaying GPS navigation with a route highlighted.

6.4 Split Screen Functionality

The split-screen feature allows you to run two applications simultaneously, such as navigation and music playback. To activate, open the first app, then long-press the square icon (recent apps) on the side panel, and select the second app.

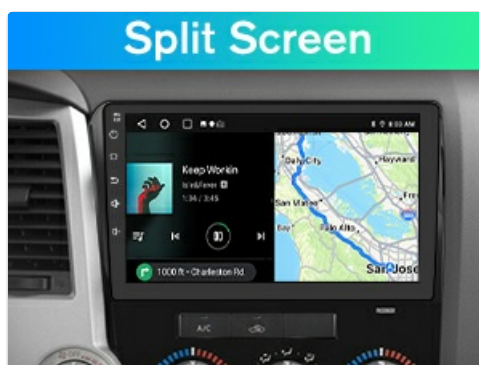


Figure 6.2: The car stereo displaying two applications simultaneously in split-screen mode.

6.5 DSP Audio Control

Utilize the built-in Digital Sound Processor (DSP) to customize your audio experience. Access the 'DSP' application to adjust equalizer settings, sound field, and other audio enhancements for superior sound quality.



Figure 6.3: The car stereo's DSP interface for advanced audio adjustments.

7. MAINTENANCE

Regularly check for system updates to ensure optimal performance and access to the latest features. Keep the screen clean with a soft, dry cloth. Avoid using harsh chemicals or abrasive materials.

8. TROUBLESHOOTING

If you encounter any issues with your AWESAFE Car Stereo, please refer to the following general troubleshooting tips:

- **No Power:** Check all power connections and ensure the vehicle's ignition is on.
- **No Sound:** Verify speaker connections, volume levels, and audio output settings.
- **GPS Signal Loss:** Ensure the GPS antenna is properly installed and has a clear view of the sky.
- **Bluetooth/CarPlay/Android Auto Connection Issues:** Ensure Bluetooth is enabled on both devices, try re-pairing, or restart both the stereo and your phone.
- **Touch Screen Unresponsive:** Try restarting the unit. If the issue persists, perform a factory reset (note: this will erase all custom settings).

For more detailed assistance, please contact our professional technical support team.

9. SPECIFICATIONS

Item Weight	3.3 pounds
Package Dimensions	12.52 x 8.35 x 4.21 inches
Display Size	10 Inches
Voice Command	Touchscreen
Brand	AWESAFE
Model Name	AWESAFE
Vehicle Service Type	Truck
Special Feature	Touchscreen
Connectivity Technology	Wi-Fi
Map Type	North America
Audio Output Mode	Stereo

Mounting Type	Dashboard Mount
---------------	-----------------

10. WARRANTY AND SUPPORT

AWESAFE provides professional technical support. Our technical support team is available 24/7 to answer your questions or assist with any installation issues. Please contact us freely if you have any concerns; we will reply as soon as possible.