

ARCADE1UP GEN-R-406000

Arcade1Up Classic SE Riser Instruction Manual

Model: GEN-R-406000

1. INTRODUCTION

This manual provides essential information for the safe and effective assembly, operation, and maintenance of your Arcade1Up Classic SE Riser. Please read all instructions carefully before beginning assembly or use.

2. SAFETY INFORMATION

Always follow basic safety precautions when assembling and using this product to reduce the risk of injury or damage. Keep all small parts and packaging materials away from children. Ensure the riser is placed on a stable, level surface before placing an arcade machine on it.

3. PACKAGE CONTENTS

Verify that all components are present before beginning assembly.

- Arcade Machine Riser components

4. SETUP

4.1 Assembly

The Arcade1Up Classic SE Riser is designed for quick and simple assembly. Follow the included graphical instructions for step-by-step guidance. Ensure all fasteners are securely tightened to provide stability.

4.2 Placement

Place the assembled riser on a flat, stable surface. Carefully lift your Arcade1Up Classic SE Machine and position it securely on top of the riser. Ensure the arcade machine is centered and stable before use.

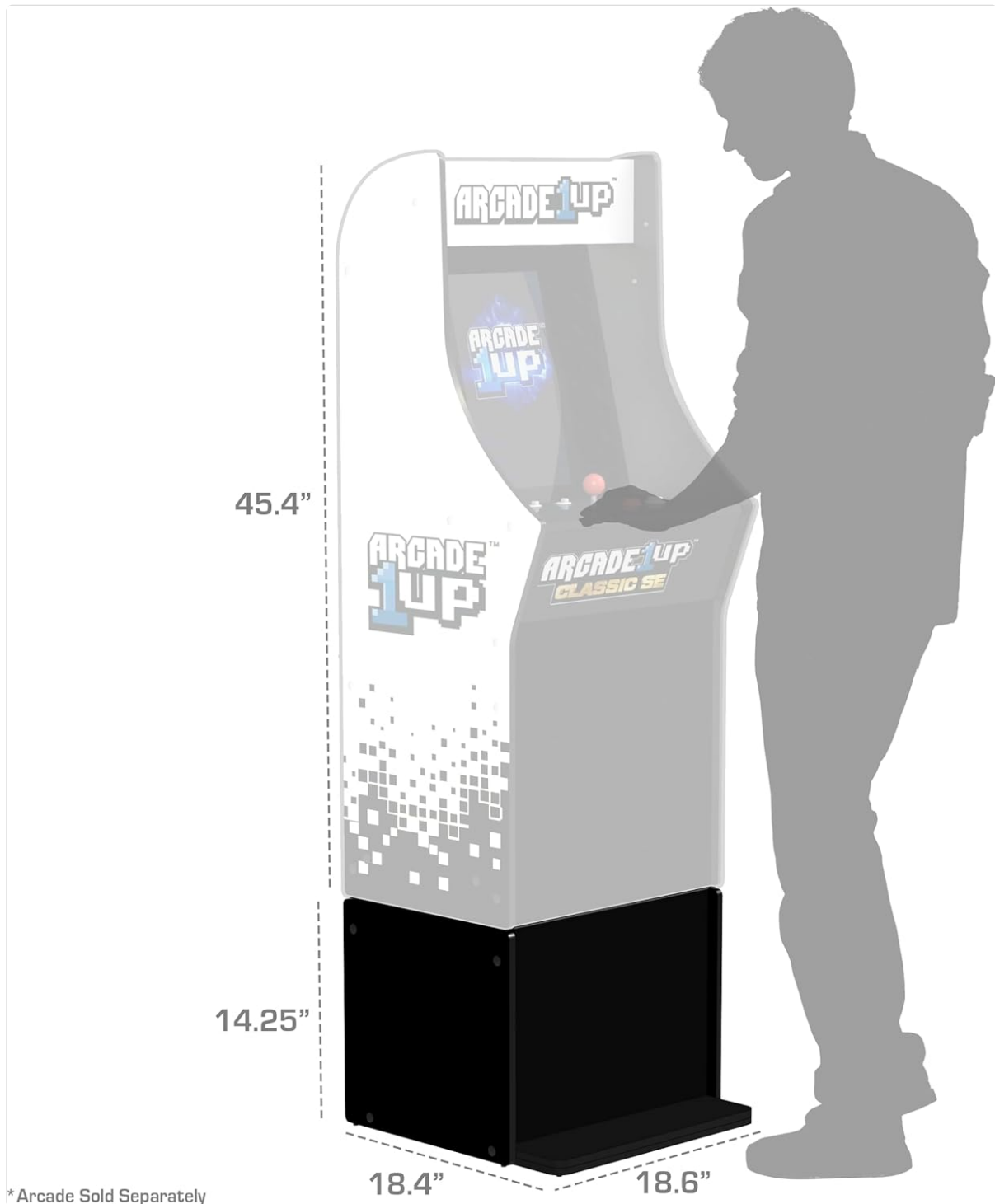


Image: Arcade1Up Classic SE Riser with key dimensions indicated, showing its height of 14.25 inches and base measurements of 18.4 by 18.6 inches.



ELEVATED ARCADE EXPERIENCE

Raises arcade machine to a comfortable standing height.



SLEEK SEAMLESS DESIGN

Blends perfectly with cabinet for a polished professional look.

Image: An Arcade1Up Classic SE Riser shown with an Arcade1Up machine placed on top, illustrating how the riser elevates the machine for a comfortable playing height.



Image: A side view of the black Arcade1Up Classic SE Riser, highlighting its sturdy construction and design.

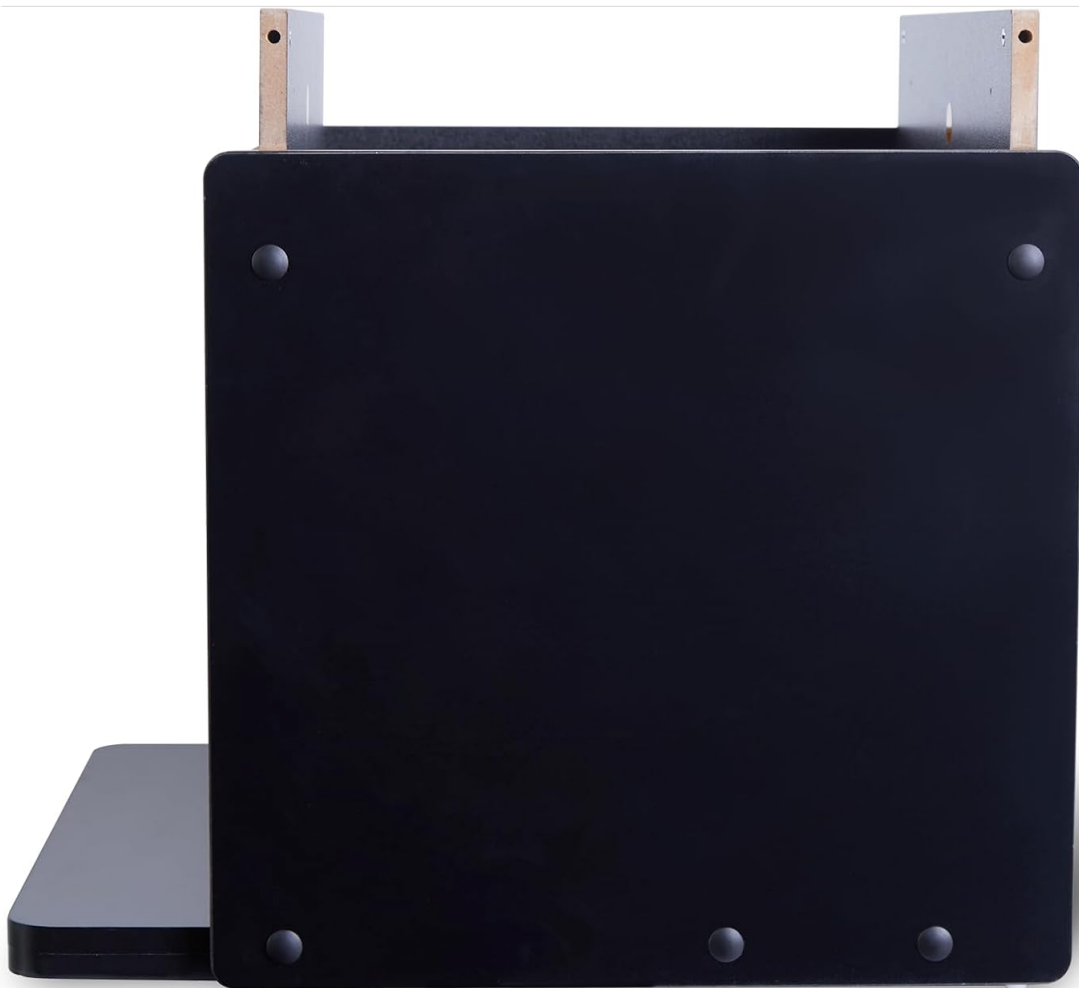


Image: A top-down view of the Arcade1Up Classic SE Riser, showing the flat surface designed to support an arcade

machine.



Image: A front view of the Arcade1Up Classic SE Riser, showcasing its sleek black finish and simple design.

5. OPERATION

The Arcade1Up Classic SE Riser is a passive accessory designed to elevate your Arcade1Up machine. No active operation is required beyond proper setup.

5.1 Elevated Gameplay Experience

By raising your arcade machine by 14.25 inches, the riser provides a more comfortable playing height, suitable for both standing and sitting gameplay. This ergonomic enhancement allows for extended play sessions with improved posture.

5.2 Aesthetic Integration

The riser features a sleek, seamless design that complements your Arcade1Up cabinet, creating a polished and professional look in any game room.

6. MAINTENANCE

To ensure the longevity and appearance of your Arcade1Up Classic SE Riser, follow these simple maintenance guidelines:

- **Cleaning:** Wipe surfaces with a soft, damp cloth. Avoid abrasive cleaners or solvents that may damage the finish.
- **Inspection:** Periodically check all assembly fasteners to ensure they remain tight. Re-tighten if necessary.
- **Storage:** If storing the riser, disassemble it carefully and keep all components in a dry, protected environment.

7. TROUBLESHOOTING

If you encounter any issues with your Arcade1Up Classic SE Riser, refer to the following common solutions:

- **Instability:** Ensure the riser is on a flat, level surface. Check that all assembly screws and bolts are fully tightened.
- **Misalignment:** If the arcade machine does not sit evenly on the riser, re-check the assembly steps to ensure all panels are correctly aligned.
- **Missing Parts:** If any parts were missing upon delivery, contact Arcade1Up customer support for assistance.

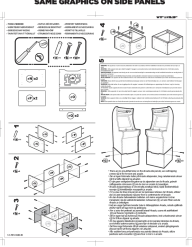
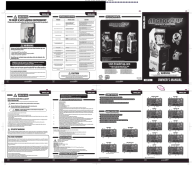




8. SPECIFICATIONS

Feature	Detail
Form Factor	Riser
UPC	195570021095
Product Dimensions	18.6 x 18.4 x 16.7 inches
Item Weight	17.6 pounds
ASIN	B0FM8LCZWS
Item Model Number	GEN-R-406000
Manufacturer Recommended Age	10 years and up
Release Date	April 7, 2025
Manufacturer	Solutions 2 Go

9. WARRANTY AND SUPPORT

For warranty information or customer support, please refer to the official Arcade1Up website or contact their customer service department directly. Keep your proof of purchase for any warranty claims.

Related Documents - GEN-R-406000

	<p>Arcade1Up Pac-Man 40th Riser Assembly Instructions</p> <p>Step-by-step assembly guide for the Arcade1Up Pac-Man 40th Riser, detailing required tools, parts, and installation procedures. Includes multilingual safety warnings and notes.</p>
	<p>Arcade1Up Legacy Edition Owner's Manual - Safety, Controls, and Troubleshooting</p> <p>Official owner's manual for the Arcade1Up Legacy Edition home arcade machine. Provides essential safety precautions, game control explanations, troubleshooting tips, installation guidelines, and technical specifications.</p>
	<p>Arcade1Up Safety Precautions</p> <p>Essential safety information and warnings for using Arcade1Up products, emphasizing safe operation and potential hazards.</p>
	<p>Arcade1UP Big Buck World User Manual: Setup, Operation, and Safety Guide</p> <p>Comprehensive user manual for the Arcade1UP Big Buck World arcade cabinet. Covers setup instructions, important safety precautions, game controls, gun calibration, troubleshooting tips, and warranty information.</p>
	<p>Arcade1Up Class of 81 Owner's Manual - MSP-A-10171</p> <p>Comprehensive owner's manual for the Arcade1Up Class of 81 (MSP-A-10171) featuring safety instructions, troubleshooting, game settings, and control layouts for classic arcade games.</p>
	<p>Arcade1UP Capcom Legacy User Manual</p> <p>User manual for the Arcade1UP Capcom Legacy arcade machine, providing setup, safety, and troubleshooting information.</p>

