

Gotrax WG1

Gotrax WG1 Electric Wiggle Car User Manual

Model: WG1

1. INTRODUCTION

Thank you for choosing the Gotrax WG1 Electric Wiggle Car. This manual provides essential information for the safe operation, assembly, and maintenance of your new electric wiggle car. Please read it thoroughly before use and retain it for future reference.

2. SAFETY INFORMATION

To ensure safe operation and reduce the risk of injury, please adhere to the following guidelines:

- Suitable for ages 36 months and up.
- Adult supervision is required at all times during use.
- Do not use on public roads, near motor vehicles, on steep slopes or steps.
- Avoid use in swimming pools or other bodies of water.
- Ensure the rider's weight does not exceed 132 lbs (60 kg).
- Always wear appropriate safety gear, including a helmet and knee/elbow pads.
- Inspect the wiggle car before each use for any loose parts or damage.

3. PACKAGE CONTENTS

The Gotrax WG1 Electric Wiggle Car package includes:

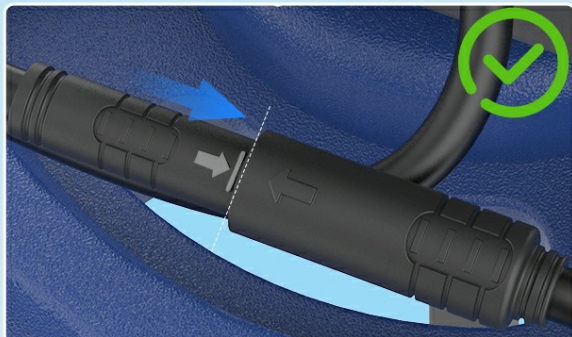
- 1 x Electric Wiggle Car unit
- 1 x 12V Rechargeable Battery (pre-installed or separate)
- 1 x Charger
- Assembly Hardware (screws, etc.)
- User Manual (this document)

4. ASSEMBLY INSTRUCTIONS

Assembly typically takes approximately 5 minutes. Follow these steps:

1. **Attach the Handlebar:** Secure the handlebar to the front of the wiggle car using the provided screws.
2. **Install the Rear Wheel Set:** Fix the rear wheel set to the base of the wiggle car with the appropriate screws.
3. **Connect the Wires:** Plug the wheel's wire into the motor adapter cable. Ensure the front wheel motor wire is fully inserted into the horizontal line position for normal acceleration.

Correct Connection



Front wheel motor wire fully inserted into the horizontal line position → Car accelerates normally.

Incorrect Connection



Front wheel motor wire not seated in the horizontal line position → Car fails to accelerate.

Figure 4.1: Correct and Incorrect Wire Connection

Once these steps are completed, the wiggle car is ready for its initial charge and use.

5. OPERATING INSTRUCTIONS

Familiarize yourself with the controls before riding:

- **Power Switch:** Located on the main body, turn it ON to activate the car.
- **Throttle Pedal:** Press the foot pedal button to engage the motor and move forward.
- **Steering:** Use the 180° rotating handlebar to steer, make sharp turns, and drift.
- **Music Speaker:** Features built-in songs. Use the control panel to adjust volume and switch modes.
- **Light-Up Rear Wheels:** These wheels illuminate during operation, enhancing visibility and fun.
- **Battery Display:** The control panel includes an indicator to show the current battery level.



Figure 5.1: Control Panel Overview

2 Wheels Flashing LED Lights

With rear flash wheels, add fun to the ride.

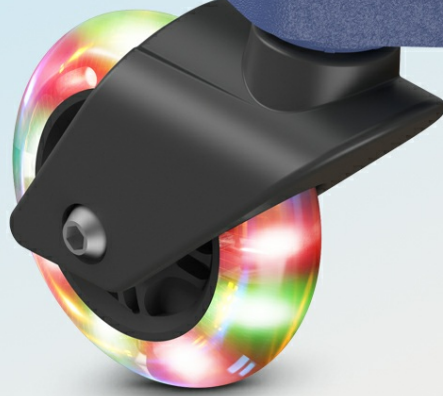


Figure 5.2: Flashing LED Rear Wheels



Figure 5.3: 180° Rotating Handlebar for Control

6. CHARGING THE BATTERY

The Gotrax WG1 is powered by a 12V safe lead-acid rechargeable battery. For optimal performance and longevity:

- Charge the battery for approximately 6 hours before first use.
- A full charge provides up to 120 minutes of continuous ride time under a 110 lbs load (lighter loads may result in longer playtime).
- The wiggler car features a quick-replace design for easy battery swaps if needed.
- Always use the charger provided by Gotrax.
- Do not overcharge the battery. Disconnect the charger once the charging indicator shows a full charge.



Figure 6.1: 120 Minutes of Use Per Full Charge

7. MAINTENANCE

Regular maintenance helps prolong the life of your GoTrax WG1:

- **Cleaning:** Wipe the car with a damp cloth. Do not use harsh chemicals or abrasive cleaners. Avoid spraying water directly onto electrical components.
- **Storage:** Store the wiggler car in a dry, cool place away from direct sunlight when not in use. If storing for extended periods, ensure the battery is fully charged and recharge it every 30-60 days to maintain battery health.
- **Inspection:** Periodically check all screws, nuts, and bolts to ensure they are tight. Inspect wheels for wear and tear.
- **Battery Care:** Do not allow the battery to fully discharge for prolonged periods.

8. TROUBLESHOOTING

If you encounter issues with your GoTrax WG1, refer to the following common problems and solutions:

Problem	Possible Cause	Solution
Car does not move	Power switch is off Battery is low or uncharged Wire connection is loose	Turn power switch ON Charge the battery Check and secure all wire connections, especially the motor adapter cable.
Lights or music not working	Battery is low Feature is turned off Loose connection	Charge the battery Ensure light/music buttons are pressed on the control panel Check internal wiring (if accessible and safe)
Reduced playtime	Battery not fully charged Battery degradation Heavy load	Ensure full charge cycle Consider battery replacement if significant degradation Ensure rider weight is within limits

If the issue persists after trying these solutions, please contact GoTrax customer support.

9. SPECIFICATIONS

Feature	Detail
Model Number	WG1
Product Dimensions	30.7 x 17.71 x 14.96 inches
Item Weight	14.33 pounds
Battery	12V (included)
Motor Power	30W
Maximum Speed	2.5 mph
Maximum Load Capacity	132 lbs
Recommended Age	36 months - 3 years
Playtime per Charge	Up to 120 minutes

10. WARRANTY AND SUPPORT

For warranty information, product support, or to purchase replacement parts, please visit the official Gotrax website or contact their customer service department. Keep your purchase receipt as proof of purchase for any warranty claims. Official Gotrax Store: [Visit the Gotrax Store on Amazon](#)

