

EasyKeys ZA2299

EasyKeys Replacement Key for Lowe & Fletcher ZA2299 User Manual

Model: ZA2299

1. INTRODUCTION

This manual provides essential information for the proper use and identification of your EasyKeys Replacement Key for Lowe & Fletcher ZA2299 locks. This key is designed to replace lost or damaged keys for compatible Lowe & Fletcher locking mechanisms within the ZA1801 - ZA2700 series. Please read these instructions carefully to ensure correct key identification and usage.

2. PRODUCT OVERVIEW AND FEATURES

The EasyKeys Replacement Key ZA2299 is a custom-cut key specifically manufactured for Lowe & Fletcher locks. It is designed for various applications including cash boxes, cupboards, desks, garage doors, lockers, and post office boxes.

- **Custom Cut:** Each key is precisely cut to match the ZA2299 code.
- **Compatibility:** Designed for Lowe & Fletcher locks within the ZA1801 - ZA2700 series.
- **Durable Material:** Constructed from brass for longevity and reliable performance.



Figure 1: EasyKeys Replacement Key ZA2299. This image displays the physical appearance of the replacement key.

3. KEY IDENTIFICATION AND SETUP

Before using your replacement key, it is crucial to verify that the lock code and manufacturer match the product title. The lock code determines the correct key for your lock. If you have lost your original keys, the lock code can typically be found on the lock itself.

3.1 Locating Your Lock Code

The lock code is essential for ensuring compatibility. Refer to the diagram below for common locations where you can find your lock code:

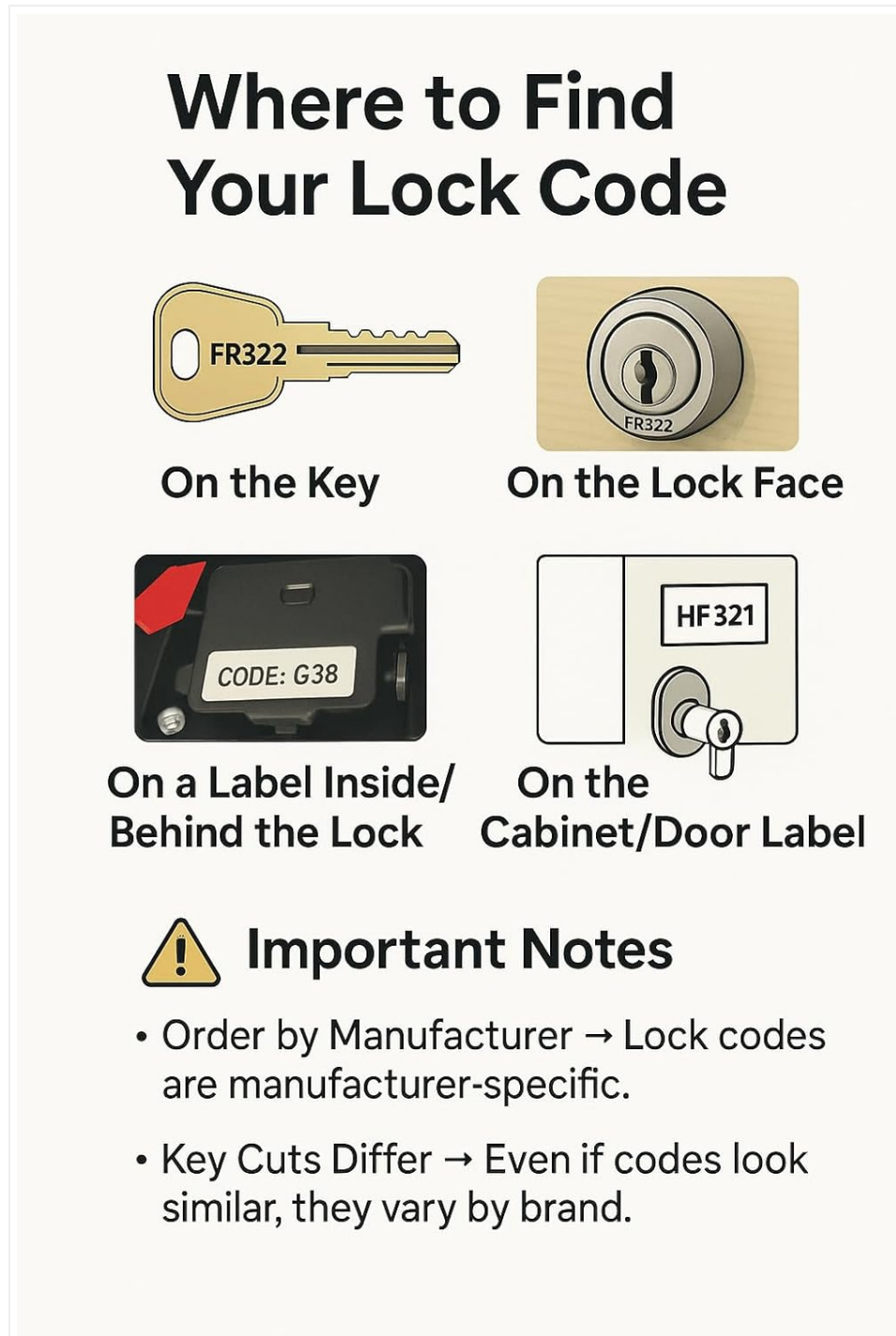


Figure 2: Where to Find Your Lock Code. This diagram illustrates various places where the lock code might be stamped or labeled, including on the key, lock face, or internal labels.

- **On the Key:** The code is often stamped directly onto the original key.
- **On the Lock Face:** Look for the code engraved on the visible part of the lock cylinder.

- **Inside/Behind the Lock:** For some locks, the code may be on a label or stamped on the mechanism itself, often requiring access to the interior of the cabinet or door.
- **On a Cabinet/Door Label:** Occasionally, the code is provided on a label affixed to the furniture or door where the lock is installed.

Important Note: Lock codes are manufacturer-specific. Even if codes appear similar, key cuts vary by brand. Ensure both the code (ZA2299) and the manufacturer (Lowe & Fletcher) match your lock.

4. OPERATING INSTRUCTIONS

Using your replacement key is straightforward:

1. **Insert the Key:** Gently insert the key into the lock's keyway until it is fully seated.
2. **Turn to Operate:** Turn the key clockwise or counter-clockwise, depending on the lock mechanism, to engage or disengage the lock.
3. **Remove the Key:** Once the lock is operated, return the key to its original position (usually vertical) before removing it.

Do not force the key if it does not turn smoothly. Forcing the key can damage both the key and the lock mechanism.

5. MAINTENANCE

To ensure the longevity and smooth operation of your key and lock:

- **Keep Clean:** Wipe the key periodically with a dry cloth to remove dirt or debris.
- **Avoid Harsh Chemicals:** Do not use abrasive cleaners or solvents on the key, as this may damage the material.
- **Lubrication (for lock):** If the lock mechanism becomes stiff, apply a small amount of graphite-based lubricant into the keyway, not oil-based lubricants.
- **Proper Storage:** Store spare keys in a dry, safe place to prevent loss or damage.

6. TROUBLESHOOTING

If you encounter issues with your replacement key, consider the following:

- **Key Does Not Insert Fully:**
 - Check for obstructions in the lock's keyway.
 - Ensure the key is oriented correctly.
 - Verify that the key code (ZA2299) matches your lock.
- **Key Inserts but Does Not Turn:**
 - Confirm the lock code and manufacturer are correct for the key.
 - Apply a small amount of graphite lubricant to the lock mechanism.
 - Ensure the lock mechanism is not jammed or damaged internally.
- **Key Feels Loose or Wobbly:**
 - This may indicate wear on the lock mechanism or the key itself. If the key is new, re-verify the code.

If problems persist, it may indicate an issue with the lock itself, or an incorrect key code was ordered. Double-check your lock code against the product information.

7. SPECIFICATIONS

Feature	Detail
Brand	EasyKeys
Model Name	ZA2299
Manufacturer	Lowe & Fletcher
Part Number	ZA2299-lowefletcher-key-1873818
Lock Type	Cam
Material	Brass
Color	Brass
Item Dimensions (L x W x H)	0.5 x 0.5 x 1 inches
Item Weight	4 ounces
Special Features	Adjustable Fit, Custom Cut Key, Durable
Included Components	1 Key
ASIN	B0FM1YGDM9

8. WARRANTY AND SUPPORT

This product is a replacement key. For specific warranty information regarding the key itself or for support related to your EasyKeys purchase, please refer to the retailer's return policy or contact EasyKeys directly. For further assistance, you may visit the [EasyKeys Store on Amazon](#).