

[Manuals.plus](#) /

> [Jocoevol](#) /

> Jocoevol WG-0616 Modern 6-Drawer Dresser Instruction Manual

Jocoevol WG-0616

Jocoevol WG-0616 Modern 6-Drawer Dresser Instruction Manual

Model: WG-0616

INTRODUCTION

Thank you for purchasing the Jocoevol WG-0616 Modern 6-Drawer Dresser. This manual provides detailed instructions for assembly, safe use, and maintenance of your new furniture. Please read all instructions carefully before beginning assembly and retain this manual for future reference.



Image: Jocoevol Modern 6-Drawer Dresser. This image displays the overall appearance of the pink dresser.

Your browser does not support the video tag.

Video: Jocoevol Modern 6-Drawer Dresser. This video provides a brief overview of the dresser, showcasing its design and how it fits into various room settings like a bedroom, living room, or hallway.

SAFETY INFORMATION

WARNING: Furniture Tip-Over Hazard. Serious or fatal crushing injuries can occur from furniture tip-over. To help prevent tip-over:

- Always install the anti-tip device provided with the dresser.
- Never allow children to climb or hang on drawers, doors, or shelves.
- Never open more than one drawer at a time.
- Place heaviest items in the lowest drawers.

Ensure all parts are securely fastened before use. Do not use this product if any parts are missing, damaged, or broken.

Anti-collapse Design

Protect your kids and pets

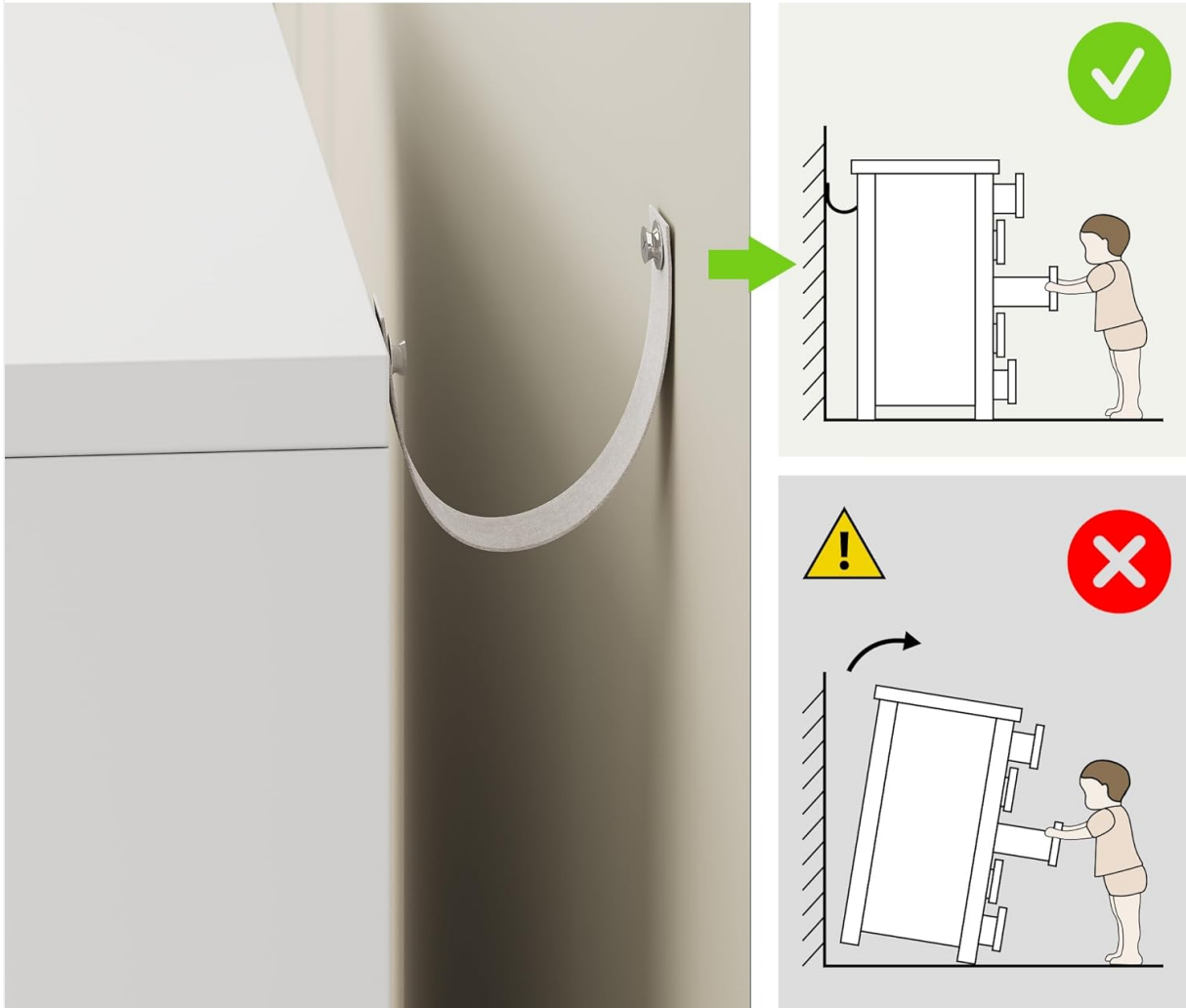


Image: Anti-collapse design diagram. This image illustrates the correct installation of the safety tether to prevent tip-over, showing a green checkmark for proper use and a red cross for an unsafe, tipping scenario.

PACKAGE CONTENTS & DIMENSIONS

Before assembly, verify that all components and hardware are present. Refer to the parts list in the assembly video for identification.

Product Dimensions

Product Size

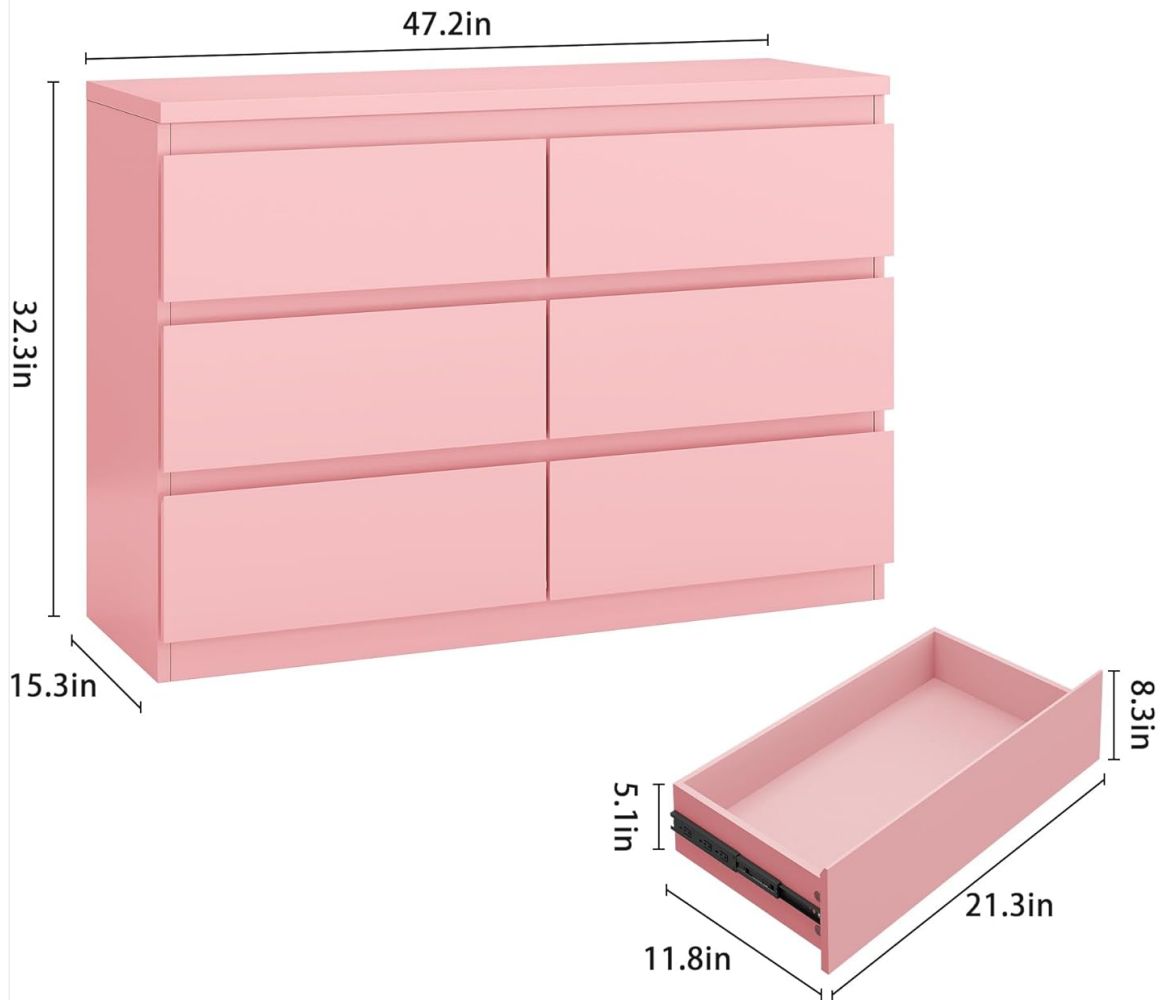


Image: Product dimensions. This diagram provides the overall measurements of the dresser and individual drawer dimensions for planning placement and storage.

- Overall Dimensions: 47.2" W x 15.3" D x 32.3" H
- Drawer Interior Dimensions: Approximately 21.3" L x 11.8" W x 5.1" H

ASSEMBLY INSTRUCTIONS

Assembly is required for this dresser. Please follow the steps below carefully. It is recommended to have two people for assembly.

Your browser does not support the video tag.

Video: Modern 6-Drawer Dresser Installation Guide. This video provides a visual step-by-step guide for assembling the dresser, including identifying parts and fastening hardware.

General Assembly Tips:

- Lay out all parts on a clean, soft surface to prevent scratches.
- Identify all hardware and components using the provided diagrams.
- Do not overtighten screws to avoid damaging the material.
- Use a screwdriver for assembly; power tools are not recommended.

Step-by-Step Assembly:

1. **Assemble the Frame:** Begin by connecting the side panels and support beams using the designated hardware. Ensure all connections are secure.
2. **Install Drawer Glides:** Attach the drawer glides to the interior of the dresser frame. Pay attention to the left (DL) and right (DR) designations for proper alignment.
3. **Construct Drawers:** Assemble each of the six drawers. Attach the front, back, and side panels, then slide the bottom panel into place.
4. **Attach Drawer Glides to Drawers:** Secure the remaining drawer glides to the sides of each assembled drawer.
5. **Insert Drawers:** Carefully slide each drawer into its designated slot in the dresser frame. Test each drawer for smooth operation.
6. **Install Back Panel:** Secure the back panel to the dresser frame.
7. **Attach Anti-Tip Device:** Follow the safety instructions to securely attach the anti-tip device to the dresser and the wall.

OPERATING INSTRUCTIONS

The Jocoevol 6-Drawer Dresser is designed for easy and smooth operation.

- **Opening Drawers:** Gently pull the top edge of the drawer front to open. The handle-less design provides a clean aesthetic.
- **Closing Drawers:** Push the drawer firmly until it is fully closed and flush with the dresser frame.
- **Weight Capacity:** Distribute weight evenly within drawers. Avoid overloading to ensure smooth operation and longevity of the drawer glides.

Classified Storage

Easy access to socks, underwear or small items



Image: Classified Storage. This image demonstrates how the drawers can be used for organized storage of small items like socks and underwear.



Image: Dresser with drawers open. This image demonstrates the ample storage capacity of the drawers, showing various items neatly organized within.

MAINTENANCE

Proper care will extend the life and appearance of your dresser.

- **Cleaning:** Wipe the surface with a damp cloth. Avoid harsh chemicals or abrasive cleaners that may damage the finish.
- **Spills:** Clean spills immediately with a soft, dry cloth to prevent staining.
- **Hardware:** Periodically check all screws and fasteners to ensure they are tight. Retighten if necessary.
- **Sunlight Exposure:** Avoid prolonged exposure to direct sunlight to prevent fading or discoloration.

Quality Drawers Dresser



Environmental
Friendly



Waterproof



Easy to
clean



Stable



Image: Quality drawers dresser. This image highlights key features such as environmental friendliness, waterproof surface, ease of cleaning, and stability, with a drawer open to show the smooth metal rails.

TROUBLESHOOTING

Problem	Possible Cause	Solution
Drawers do not slide smoothly.	Misaligned drawer glides or loose screws. Overloaded drawer.	Check that drawer glides are correctly installed and all screws are tight. Redistribute items in the drawer.
Dresser feels unstable or wobbly.	Loose connections or uneven floor. Anti-tip device not installed.	Ensure all assembly screws are tightened. Place the dresser on a level surface or use shims if necessary. Install the anti-tip device.
Gaps between drawers or frame.	Incorrect assembly of drawer fronts or frame components.	Review assembly steps, particularly those involving drawer fronts and frame connections, to ensure correct alignment and secure fastening.

SPECIFICATIONS

- **Brand:** Jocoevol
- **Model Name:** WG-0616
- **Color:** Pink
- **Material:** Engineered Wood
- **Finish Type:** Polished
- **Number of Drawers:** 6
- **Product Dimensions:** 15.3"D x 47.2"W x 32.3"H
- **Item Weight:** 92 Pounds
- **Assembly Required:** Yes
- **Product Care Instructions:** Wipe with Damp Cloth

CUSTOMER SUPPORT

For any questions, missing parts, or assistance with assembly, please contact Jocoevol customer support. Refer to your purchase documentation for specific contact details.