

EUHOMY PAC002-10KWH-USZX-AZ

EUHOMY 10,000 BTU Portable Air Conditioner User Manual

Model: PAC002-10KWH-USZX-AZ

1. PRODUCT OVERVIEW

The EUHOMY 10,000 BTU Portable Air Conditioner is a versatile 3-in-1 unit designed to provide cooling, dehumidification, and fan functions for spaces up to 450 square feet. It features a high airflow of 350m³/h for rapid cooling, a 24-hour timer, and a quiet sleep mode, making it an ideal solution for various indoor environments.



Figure 1: EUHOMY Portable Air Conditioner and included accessories, such as the exhaust hose, window adapter, and remote control.

2. SAFETY INSTRUCTIONS

Please read all instructions carefully before using the appliance. Keep this manual for future reference. Failure to follow these instructions may result in electric shock, fire, or injury.

- Ensure the power supply voltage matches the unit's requirements (115 Volts).
- Do not operate the unit with a damaged cord or plug.
- Do not insert fingers or foreign objects into the air inlet or outlet.
- Always unplug the unit before cleaning or servicing.
- Keep the unit on a flat, stable surface to prevent tipping.
- This appliance is not intended for use by persons (including children) with reduced physical, sensory or mental capabilities, or lack of experience and knowledge, unless they have been given supervision or instruction concerning use of the appliance by a person responsible for their safety.
- The unit is ETL-certified and DOE-compliant for safety.

3. SETUP AND INSTALLATION

The portable air conditioner is designed for easy setup. Follow these steps for proper installation:

1. **Unpacking:** Carefully remove the unit and all accessories from the packaging. Verify all components are present: AC unit, window boards (2), hose, hose coupler, hose coupler to machine, drainage pipe, and remote control.
2. **Positioning:** Place the unit on a flat, stable surface near a window and a power outlet. The unit features 360° swivel wheels and hidden handles for easy mobility.
3. **Window Kit Assembly:**
 - Adjust the window sealing plate to the length of your window (suitable for windows 25.6-36 inches wide). Secure with screws if necessary to ensure a tight seal.
 - Place the assembled window kit into the window track and close the window securely against it.
4. **Exhaust Hose Connection:**
 - Connect one end of the exhaust hose to the hose coupler to machine.
 - Connect the other end of the exhaust hose to the hose coupler.
 - Attach the hose coupler to the exhaust port on the back of the AC unit.
 - Extend the exhaust hose and insert the hose coupler into the opening of the window kit. Ensure the hose is not kinked or bent sharply to allow for proper airflow.
5. **Power Connection:** Plug the power cord into a grounded 115V electrical outlet.

Sweet Dream At Night

EÜHOMY

 **24H**
Timer

 **<52dB**
Low Noise

Figure 2: Illustration of the portable AC unit with its exhaust hose connected to a window kit, demonstrating proper setup.



Figure 3: Step-by-step visual guide for installing the window kit and exhaust hose.

4. OPERATING INSTRUCTIONS

The EUHOMY Portable Air Conditioner can be operated using the control panel on the unit or the included remote control.

4.1 Control Panel and Remote Control

The control panel features an LED display and touch buttons for various functions. The remote control provides convenient operation from up to 23 feet away.

2-Way to Control



23Ft

Long Control Distance

* The maximum straight-line distance of the remote control is 23Ft

Figure 4: Overview of the unit's control panel and the remote control, highlighting the long control distance.

Control Panel / Remote Button Functions

Button	Function
Power	Turns the unit ON or OFF.
Mode	Cycles through operating modes: Cool, Dehumidifier, Fan.

Button	Function
Up/Down Arrows	Adjusts the desired temperature (Cool mode) or timer settings.
Speed	Adjusts fan speed (Low/High).
Timer	Sets the 24-hour ON/OFF timer.
Sleep	Activates quiet sleep mode, automatically dimming the screen.
Vent Angle	Adjusts the angle of the air outlet louvers.

4.2 Operating Modes

The unit offers three primary operating modes:

- **Cool Mode:** Provides powerful cooling for your room.
 - Temperature range: 61°F (16°C) to 90°F (32°C).
 - The compressor will automatically shut off once the set temperature is reached to save energy.
- **Dehumidifier Mode:** Removes excess moisture from the air.
 - Removes up to 51 pints of moisture per day.
 - For continuous drainage in high humidity, connect the included drainage pipe to the appropriate drain port (central or bottom).
- **Fan Mode:** Circulates air without cooling.
 - Two speed settings: Low and High.

Portable Air Conditioner

Enjoy a cool summer with high energy efficiency



Cooling

61°F-90°F

Dehumidifier

51Pint/Day

Fan

Low / High



Air conditioner



Dehumidifier



Air Fan

Figure 5: Visual representation of the three main operating modes: Cooling, Dehumidifier, and Fan.

4.3 Special Features

- **24-Hour Timer:** Program the unit to turn ON or OFF automatically within a 24-hour period.
- **Sleep Mode:** Reduces noise levels (as low as 52-54 decibels) and automatically dims the LED display for undisturbed sleep.
- **Child Lock:** Prevents accidental changes to settings.

- **Automatic Restart:** The unit supports automatic restart after a power interruption, resuming previous settings.



Figure 6: The unit's quiet operation and timer function are ideal for bedroom use, ensuring a comfortable night's sleep.

5. MAINTENANCE

Regular maintenance ensures optimal performance and longevity of your EUHOMY Portable Air Conditioner.

5.1 Cleaning the Air Filter

The air filter should be cleaned every two weeks or more frequently depending on usage and air quality.

1. Turn off the unit and unplug it from the power outlet.
2. Locate the air filter panel (usually on the back or side of the unit).
3. Remove the filter. It is designed to be removable and washable.
4. Clean the filter with warm water and a mild detergent. Rinse thoroughly.
5. Allow the filter to air dry completely before reinserting it into the unit. Do not operate the unit without the filter.



4-IN-1 Portable Air Conditioner

 COOLING 10000BTU	 DRY 51Pints/Day
 FAN Low/High	 SLEEP ≤52DB

One Product, Four Modes

Figure 7: The easily removable and washable air filter, crucial for maintaining air quality and unit efficiency.

5.2 Draining Water

The unit collects condensate water during cooling and dehumidifying operations. Depending on humidity levels, manual or continuous drainage may be required.

- **Manual Drainage:** When the internal water tank is full, the unit will stop operating and display an indicator.
 - Turn off and unplug the unit.
 - Place a shallow pan or tray under the lower drain port.
 - Remove the drain plug and allow the water to drain completely.
 - Replace the drain plug securely.
- **Continuous Drainage:** For prolonged use in high humidity, connect the included drainage pipe to the continuous drain port.
 - Locate the continuous drain port (usually higher up on the back of the unit).
 - Attach the drainage pipe to this port.
 - Ensure the other end of the pipe is placed in a suitable drain or container, positioned lower than the drain port to allow gravity drainage.

6. TROUBLESHOOTING

Before contacting customer support, please refer to the following troubleshooting guide for common issues.

Troubleshooting Guide

Problem	Possible Cause	Solution
Unit does not turn ON.	No power, power cord unplugged, circuit breaker tripped.	Check power connection, reset circuit breaker.
Unit not cooling effectively.	Dirty air filter, exhaust hose blocked/kinked, room too large, windows/doors open.	Clean filter, check hose, ensure room size is within specifications (up to 450 sq.ft), close windows/doors.
Water leakage.	Drain plug loose, continuous drainage hose not properly connected or elevated.	Secure drain plug, ensure continuous drainage hose is properly connected and sloped downwards.
Unit is noisy.	Unit not on a flat surface, fan speed too high.	Place on a level surface, select a lower fan speed (Sleep mode for quiet operation).
Remote control not working.	Batteries dead, obstruction between remote and unit.	Replace batteries, remove obstructions, ensure remote is within 23ft range.

7. SPECIFICATIONS

Product Specifications

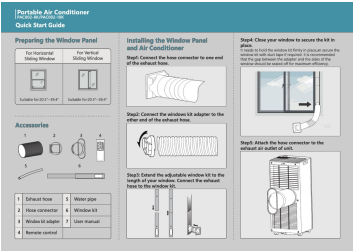
Feature	Detail
Model Name	PAC002-10KWH-USZX-AZ

Feature	Detail
Brand	EUHOMY
Cooling Power	10,000 BTU (ASHRAE) / 6,000 BTU (SACC)
Coverage Area	Up to 450 sq.ft
Dehumidification Capacity	51 pints per day
Voltage	115 Volts
Noise Level	52-54 dB
Refrigerant	R-32 (Environmentally friendly)
Product Dimensions	14.06"D x 16.5"W x 27.09"H
Item Weight	50.2 pounds
Included Components	AC Unit, Hose, Window Adapter, Remote Control, Drainage Pipe

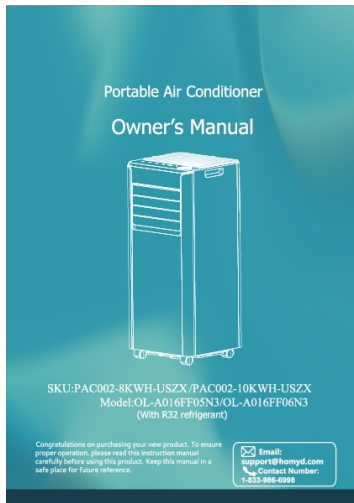
8. WARRANTY AND SUPPORT

EUHOMY offers a one-year warranty for this product. For any questions, concerns, or technical support, please contact EUHOMY customer service. Refer to the contact information provided in your product packaging or visit the official EUHOMY website.

For more information, you can visit the [EUHOMY Store on Amazon](#).



[EUHOMY Portable Air Conditioner PAC002-8K/PAC002-10K Quick Start Guide](#)
A quick start guide for the EUHOMY Portable Air Conditioner models PAC002-8K and PAC002-10K, covering installation, control panel functions, and maintenance.
lang: score:31 filesize: 4.23 M page_count: 2 document date: 2025-06-21



[Homedy Portable Air Conditioner Owner's Manual](#)

This owner's manual provides detailed instructions for the Homedy Portable Air Conditioner, including product description, safety precautions, installation, operation, cleaning, troubleshooting, and decommissioning. It covers models PAC002-8KWH-USZX and PAC002-10KWH-USZX.

lang: **score:23** filesize: 20.37 M page_count: 36 document date: 2025-06-21