

Guidecraft G80336

Guidecraft EdQ 5-Tier Front-Facing Kids Book Display

INSTRUCTION MANUAL - MODEL G80336

[Overview](#) [Setup](#) [Operating](#) [Maintenance](#) [Troubleshooting](#) [Specifications](#) [Support](#)

1. Product Overview

The Guidecraft EdQ 5-Tier Front-Facing Kids Book Display, Model G80336, is a durable and functional furniture piece designed for children's spaces. Crafted from premium birch plywood, this book display features five tiered shelves that allow books to be displayed with their covers facing forward, promoting easy access and encouraging independent selection by children. Its design supports organization in various environments such as preschools, nurseries, homeschools, and playrooms.



Image 1.1: The Guidecraft EdQ 5-Tier Front-Facing Kids Book Display in its natural wood finish, showcasing its five tiered shelves.

2. Setup and Assembly

This Guidecraft EdQ Book Display requires assembly. All necessary tools, hardware, and detailed instructions are included in the packaging to facilitate a straightforward setup process.

2.1. Unpacking

- Carefully open the packaging and remove all components.
- Verify that all parts listed in the included hardware and parts list are present.
- Keep small parts away from children during assembly.

2.2. Assembly Steps

1. Identify the side panels and base panel.
2. Attach the first side panel to the base panel using the provided screws and an appropriate screwdriver. Ensure a secure fit.
3. Insert the five tiered shelves into the designated slots on the attached side panel.
4. Align the second side panel with the shelves and base, then secure it using the remaining screws.
5. Gently tighten all screws, ensuring the unit is stable and level. Avoid overtightening.



Image 2.1: A close-up view illustrating the secure connection points at the base and side panel of the book display, highlighting the construction details.

3. Operating Instructions

The Guidecraft EdQ Book Display is designed for intuitive use, promoting independence in children by making books easily accessible.

3.1. Placing Books

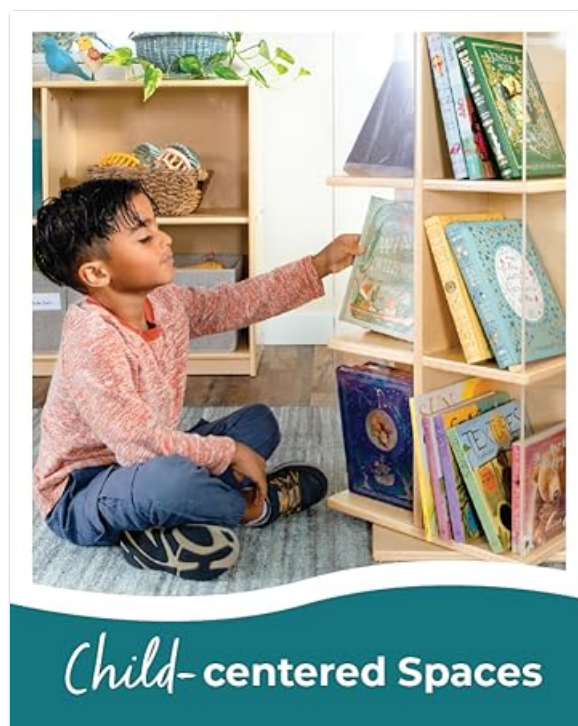
- Place books on the five tiered shelves with their covers facing forward. This allows children to easily identify and select books based on their visual appeal.
- The tiered design accommodates books of various sizes, from small board books to larger picture books.
- Distribute the weight of the books evenly across the shelves to maintain stability.

3.2. Encouraging Independence

The child-friendly height and front-facing design encourage children to browse, select, and return books independently, fostering early decision-making skills and a love for reading.



Image 3.1: The book display fully stocked with children's books, demonstrating its capacity and how books are presented for easy viewing.



Child-centered Spaces

Image 3.2: A child interacting with a front-facing bookshelf, illustrating the ease of access and encouragement of independent book selection.

4. Care and Maintenance

Proper care will ensure the longevity and appearance of your Guidecraft EdQ Book Display.

4.1. Cleaning

- Wipe the surfaces with a soft, damp cloth.
- Avoid using abrasive cleaners or harsh chemicals, as these can damage the birch plywood finish.
- For stubborn marks, a mild soap solution can be used, followed by wiping with a clean, dry cloth.

4.2. General Care

- Periodically check all screws and connections to ensure they remain tight. Retighten if necessary.
- Avoid exposing the book display to excessive moisture or direct sunlight for prolonged periods, as this can cause warping or fading.
- Do not use the book display as a climbing structure or step stool.

5. Troubleshooting

If you encounter any issues with your Guidecraft EdQ Book Display, please refer to the following common solutions:

5.1. Instability or Wobbling

- **Solution:** Ensure the book display is placed on a flat, level surface. Check all assembly screws and tighten them securely. Avoid overtightening.

5.2. Damaged or Missing Parts

- **Solution:** If any parts were damaged during shipping or are missing from the package, please contact Guidecraft customer service immediately for assistance. Do not attempt to assemble with damaged or missing components.

6. Product Specifications

Feature	Detail
Model Number	G80336
Product Dimensions	36" L x 15" W x 30" H (91.4 cm L x 38.1 cm W x 76.2 cm H)
Item Weight	35.2 pounds (15.97 kg)
Material	Birch Plywood
Number of Tiers	5
Assembly Required	Yes

7. Warranty and Support

7.1. Warranty Information


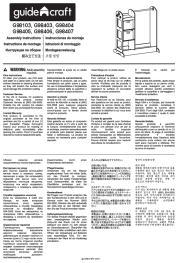

For detailed warranty information regarding your Guidecraft EdQ Book Display, please refer to the manufacturer's official website or the original purchase documentation. Warranty terms and conditions may vary.




7.2. Customer Support

If you require further assistance, have questions about assembly, or need to report a product issue, please contact Guidecraft customer service. Contact information can typically be found on the Guidecraft website or on your product packaging.

© 2025 Guidecraft. All rights reserved.

Related Documents - G80336

	<p>Guidecraft Vanity and Stool Assembly Instructions (Models G85710-G87406)</p> <p>Comprehensive assembly instructions for the Guidecraft vanity and stool set, covering parts identification, step-by-step assembly, and anti-tip safety measures for models G85710, G86210, G87403, G87404, G87405, and G87406.</p>
	<p>Guidecraft G98103-G98407 Wardrobe Assembly Instructions</p> <p>Comprehensive assembly guide for Guidecraft G98103, G98403, G98404, G98405, G98406, and G98407 children's wardrobe and storage units. Includes parts list, hardware identification, and step-by-step instructions.</p>
	<p>Guidecraft G76801, G76901 Kids Corner Reading Nook Assembly Instructions</p> <p>Detailed assembly instructions for the Guidecraft G76801 and G76901 Kids Corner Reading Nook, including parts list, hardware details, and step-by-step guidance for safe and correct assembly.</p>

	<p>Guidecraft Outdoor Furniture Assembly Instructions - G52022, G52014, G52017, G52018</p> <p>Official assembly instructions for Guidecraft outdoor furniture sets, including the G52022 set, G52014 bench, and G52017/G52018 tables. Features care instructions, warranty information, parts list, and step-by-step assembly guides.</p>
	<p>Guidecraft G52023 Outdoor Furniture Assembly Instructions - Bench & Table</p> <p>Official assembly instructions for Guidecraft outdoor furniture models G52023, G42015, G42018, G52015, G52017, G52018. Includes parts list, hardware details, and step-by-step guidance for assembling benches and tables. Features care instructions and warranty information.</p>
	<p>Guidecraft G78207 Outdoor Furniture Set Assembly Instructions</p> <p>Comprehensive assembly instructions for the Guidecraft G78207 outdoor furniture set, including the G78204 sofa, G78205 chair, and G78206 table. Features a parts list, step-by-step assembly guidance, care instructions, and warranty information.</p>