

SUNLU SLMX-AH-US-GMSLUS

SUNLU AMS Heater Instruction Manual

Model: SLMX-AH-US-GMSLUS

Compatible with Bambu Lab AMS Gen 1

1. INTRODUCTION

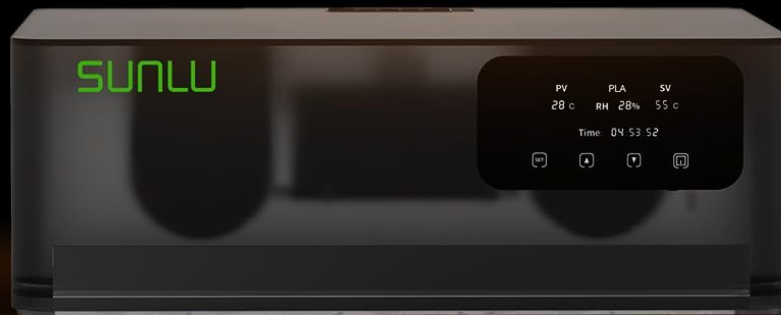
The SUNLU AMS Heater is designed to enhance the functionality of your Bambu Lab AMS (Gen 1) by enabling simultaneous filament drying and 3D printing. This device helps maintain optimal filament conditions, preventing common printing issues caused by moisture.

This manual provides detailed instructions for the installation, operation, and maintenance of your SUNLU AMS Heater to ensure safe and efficient use.



Image: The SUNLU AMS Heater integrated with a Bambu Lab AMS, illustrating its dual function of drying filament while printing.

Packing List



AMS Heater*1



Hinge*4



Hexagonal Screws*8



Power Cord*1



User Manual*1



Hexagonal Screwdriver*1

Image: Visual comparison demonstrating improved print quality (no clogging, stringing, or poor adhesion) when using dried filament with the AMS Heater.

2. SAFETY INFORMATION

Please read all safety instructions carefully before operating the SUNLU AMS Heater. Failure to follow these instructions may result in injury or damage to the product.

- Ensure the device is connected to a power source that matches the specified voltage.
- Do not block the air vents during operation to prevent overheating.
- Keep the device away from water or other liquids.
- Do not attempt to disassemble or repair the device yourself. Contact customer support for assistance.

- Always handle the device with care, especially when hot.

Triple Protection System

The AMS Heater incorporates a triple protection system to ensure safe operation:

- **Smart PTC:** Automatic shut-off if abnormal temperatures are detected.
- **Temperature Switch:** Monitors temperature and automatically controls heating to prevent overheating.
- **Software Protection:** Provides instant alerts in case of operational anomalies.



Image: Overview of the AMS Heater's triple protection features for enhanced safety.

3. PACKAGE CONTENTS

Verify that all items listed below are included in your package:

- AMS Heater x 1
- Hinge x 4
- Hexagonal Screws x 8
- Hexagonal Screwdriver x 1
- Power Cord x 1
- User Manual x 1

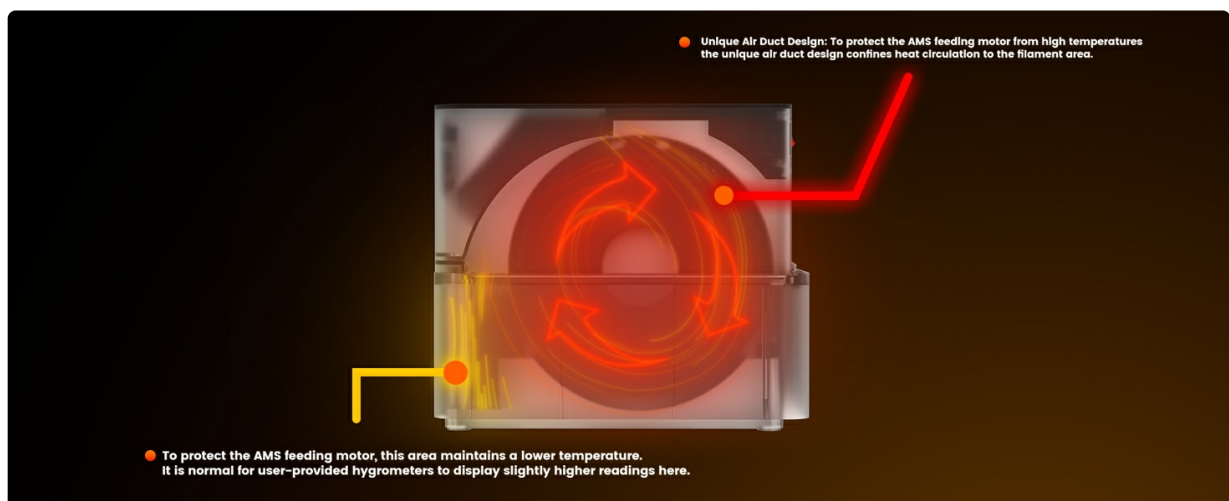


Image: A visual representation of the complete packing list for the SUNLU AMS Heater.

Your browser does not support the video tag.

Video: An unboxing guide for the SUNLU AMS Heater, demonstrating the contents of the package.

4. SETUP AND INSTALLATION

The SUNLU AMS Heater is designed for easy, non-destructive installation on your Bambu Lab AMS Gen 1 unit. Follow these three steps:

1. **Loosen:** Unscrew the 4 hinge screws on your existing AMS top cover and remove the cover.
2. **Remove & Install:** Mount the provided hinges onto the side pins of the AMS Heater.
3. **Tighten:** Secure the 4 screws to complete the installation.

The installation process replaces the original AMS lid and does not damage the AMS unit.

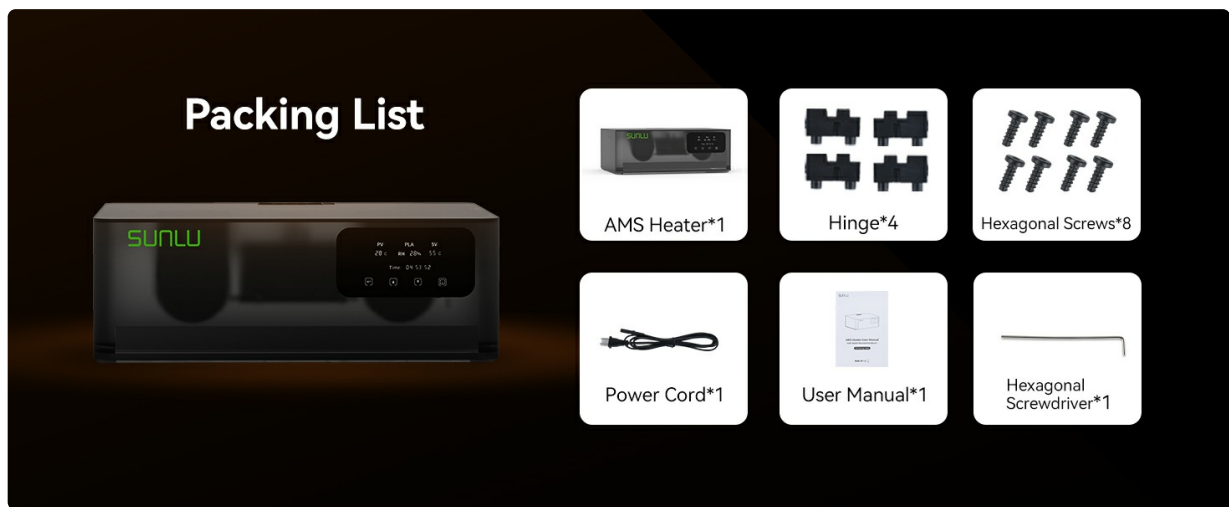


Image: Step-by-step visual instructions for installing the AMS Heater.

Your browser does not support the video tag.

Video: A detailed guide demonstrating the installation process of the AMS Heater.

5. OPERATING INSTRUCTIONS

The AMS Heater features an intuitive control panel for easy operation and filament drying management.

Control Panel Overview



Image: The control panel of the AMS Heater, highlighting its one-touch start and preset options for various filament types.

Drying Process

- **Fast Heating:** The AMS Heater can reach 70°C (158°F) in approximately 20 minutes, significantly reducing filament drying time compared to other methods.
- **Intelligent Humidity Control:** The device automatically initiates heating when the internal humidity reaches or exceeds 50% RH and stops heating when it drops to 20% RH or below. This ensures optimal drying conditions without constant manual intervention.
- **Dual-Airflow Circulation:** A unique air-duct design ensures even heat distribution throughout the filament area, preventing localized overheating and protecting the AMS feeding motor.
- **Manual Air Outlet:** For effective drying, push the sliding vent cover from right to left to open the

manual air outlet. This allows moisture to escape the chamber.

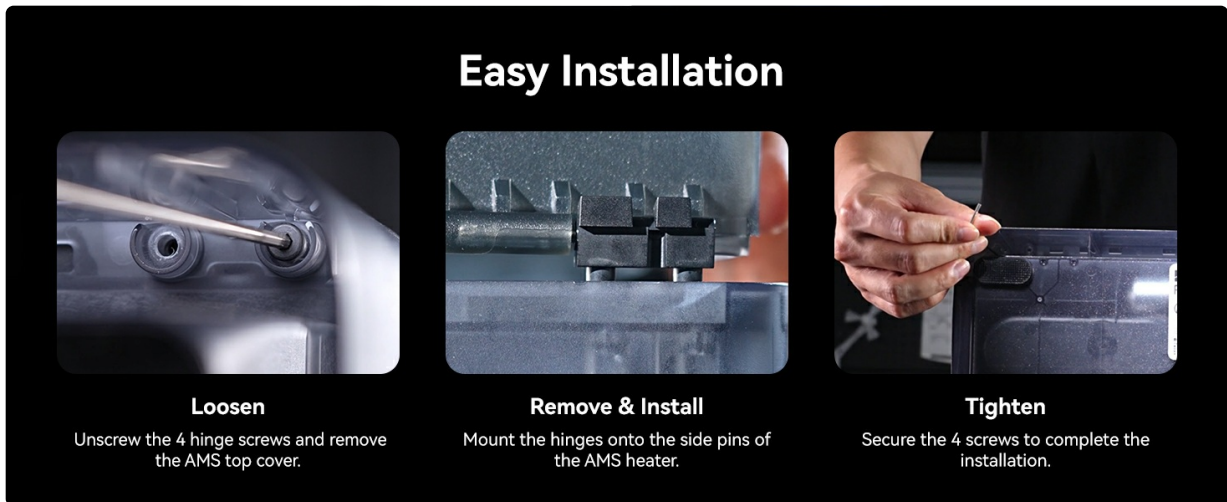


Image: Illustration of the dual-airflow system for fast and even heating.



Image: Visual representation of the intelligent humidity control system, showing automatic heating and stopping based on humidity levels.

Your browser does not support the video tag.

Video: Demonstrates the SUNLU AMS Heater in operation, highlighting its ability to dry filament during printing.

6. MAINTENANCE

Regular maintenance ensures the longevity and optimal performance of your AMS Heater.

- **Cleaning:** Periodically wipe the exterior of the device with a soft, dry cloth. Ensure the device is unplugged and cool before cleaning.
- **Ventilation:** Keep the air vents clear of dust and debris to maintain proper airflow and prevent overheating.
- **Storage:** When not in use for extended periods, store the AMS Heater in a dry, dust-free environment.

7. TROUBLESHOOTING

This section addresses common questions and issues you might encounter with your SUNLU AMS Heater.

Humidity Sensor Readings

When drying filament, especially if it's very wet or if new desiccant is introduced, the humidity sensors might initially show an increase in humidity. This is a normal and positive indication that the heat is effectively drawing moisture out of the filament and desiccant. The moisture is being released into the chamber before it can be vented. Continue the drying process, ensuring the manual air outlet is open to allow moisture to escape.

If you have extremely wet filament, consider pre-drying it in a separate filament dryer before placing it in the AMS Heater for optimal results.

General Issues

- **Device not powering on:** Ensure the power cord is securely connected to both the device and a working power outlet.
- **No heat:** Check if the device is powered on and if the temperature settings are correctly configured. Refer to the operating instructions.
- **Unusual noises:** Discontinue use and contact customer support if you hear any abnormal sounds.

8. SPECIFICATIONS

Feature	Detail
Brand	SUNLU
Model Number	SLMX-AH-US-GMSLUS
Material	AMS Heater
Color	Black
Item Weight	1.7 Kilograms
Product Dimensions	14.3 x 10.9 x 5.2 inches (363 x 278 x 131 mm)
Temperature Setting Range	35°C - 70°C
Humidity Display Range	10% - 90% (See display)
Time Setting Range	0 - 99 Hours
Power Input	AC 110V 60Hz or AC 220V 50Hz
Max Power Consumption	390W
Included Components	AMS Heater, Hexagonal Screwdriver, Hexagonal Screws, Hinge, Power Cord, User Manual

AMS Heater Specification



- Product Dimensions
14.3×10.9×5.2"(363×278×131 mm)
- Package Dimensions
16.3×12.4×7.5"(415×316×190 mm)
- Product Weight
Net 1.7 kg; Gross 2.3 kg
- Temperature Setting Range
35°C – 70°C
- Humidity Display Range
10% – 90% (See display)
- Time Setting Range
0 – 99 H
- Power Input
AC 110V 60Hz Or AC 220V 50Hz
- Standby Power
0.6W
- Max Operating Current
2.2A @ 230V / 4.15A @ 120V
- Max Power Consumption
390W

Image: Detailed specifications and dimensions of the AMS Heater.

9. WARRANTY AND SUPPORT

Warranty: The SUNLU AMS Heater comes with a 1-year warranty from the date of purchase. This warranty covers manufacturing defects and malfunctions under normal use. Please retain your proof of purchase for warranty claims.

Customer Support: For technical assistance, troubleshooting, or warranty inquiries, please contact SUNLU customer support through their official website or the retailer where the product was purchased. Provide your model number (SLMX-AH-US-GMSLUS) and a detailed description of the issue for faster service. For more information, visit the official [SUNLU Store](#).