

Jesebang YT18

Jesebang YT18 Wireless Earbuds User Manual

Model: YT18

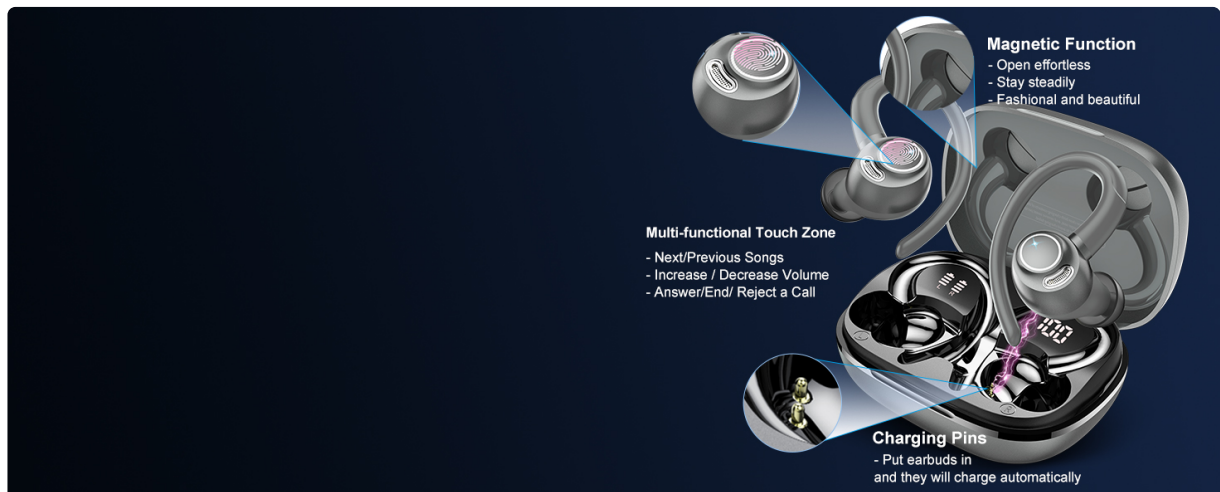
INTRODUCTION

Welcome to your new Jesebang YT18 Wireless Earbuds. These earbuds are engineered to provide a superior audio experience, featuring advanced Bluetooth 5.4 connectivity, Environmental Noise Cancellation (ENC) for clear calls, and a secure over-ear design. They are ideal for sports, workouts, and daily use, offering comfort and durability. This manual provides comprehensive instructions for setting up, operating, and maintaining your earbuds to ensure optimal performance.

WHAT'S IN THE BOX

Please check the package contents to ensure all items are present:

- Wireless Charging Case
- USB-C Charging Cable
- User Manual
- YT18 Headphones (2 earbuds)
- Eartips (S, M, L sizes)



PRODUCT OVERVIEW

Earbud Components

Each earbud features a flexible ear hook for a secure fit, a touch control area, and integrated microphones for calls and noise cancellation.

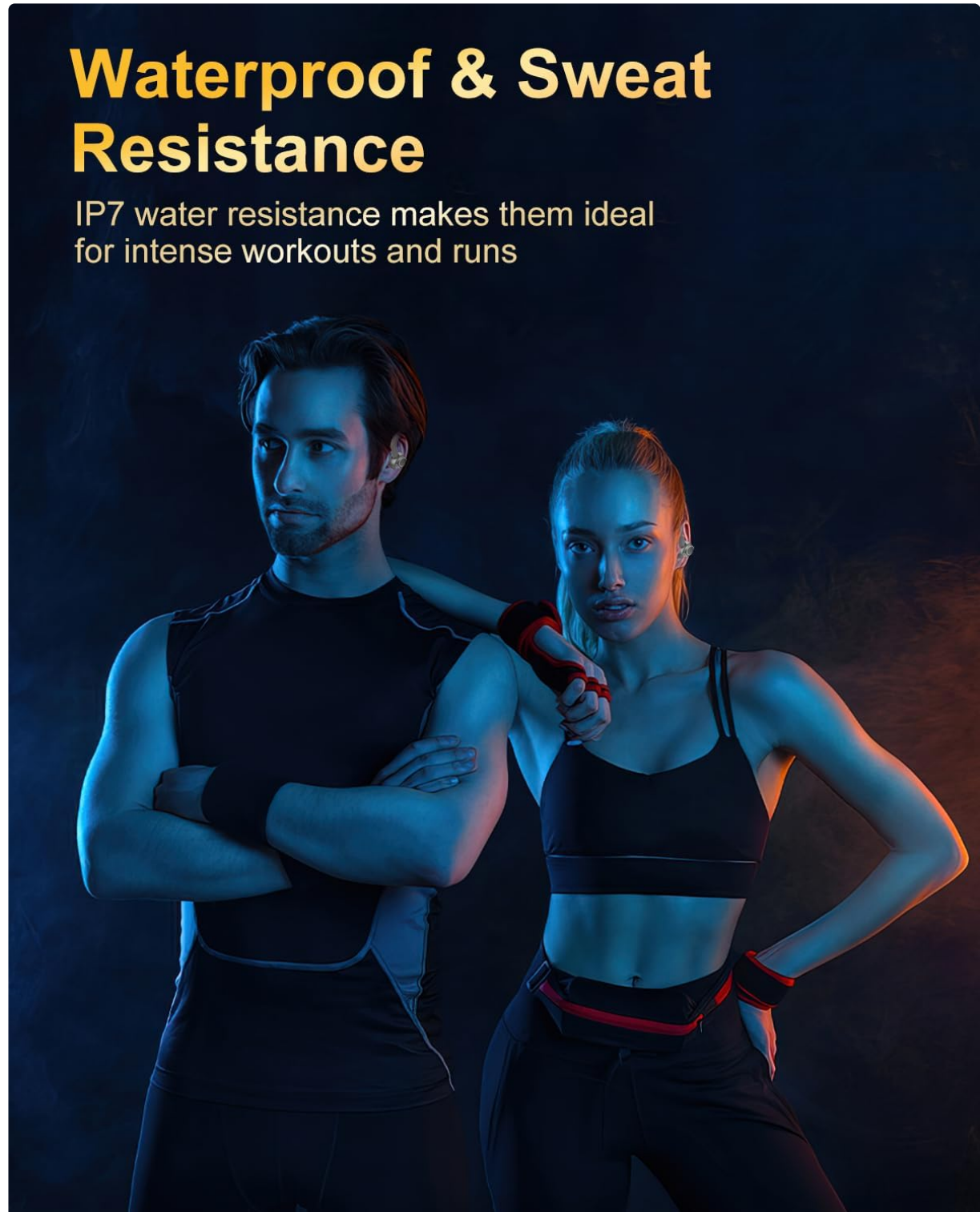


Image: Detailed view of a Jesebang YT18 earbud.

Charging Case

The charging case protects your earbuds and recharges them. It features a dual LED digital display that shows the battery level of both the earbuds and the case itself. A USB-C port is located on the back for

charging the case.

One-step Auto Pairing

- 1 Remove the earbuds from charging case.
- 2 Activate Bluetooth Setting, search & click "YT18" to connect.

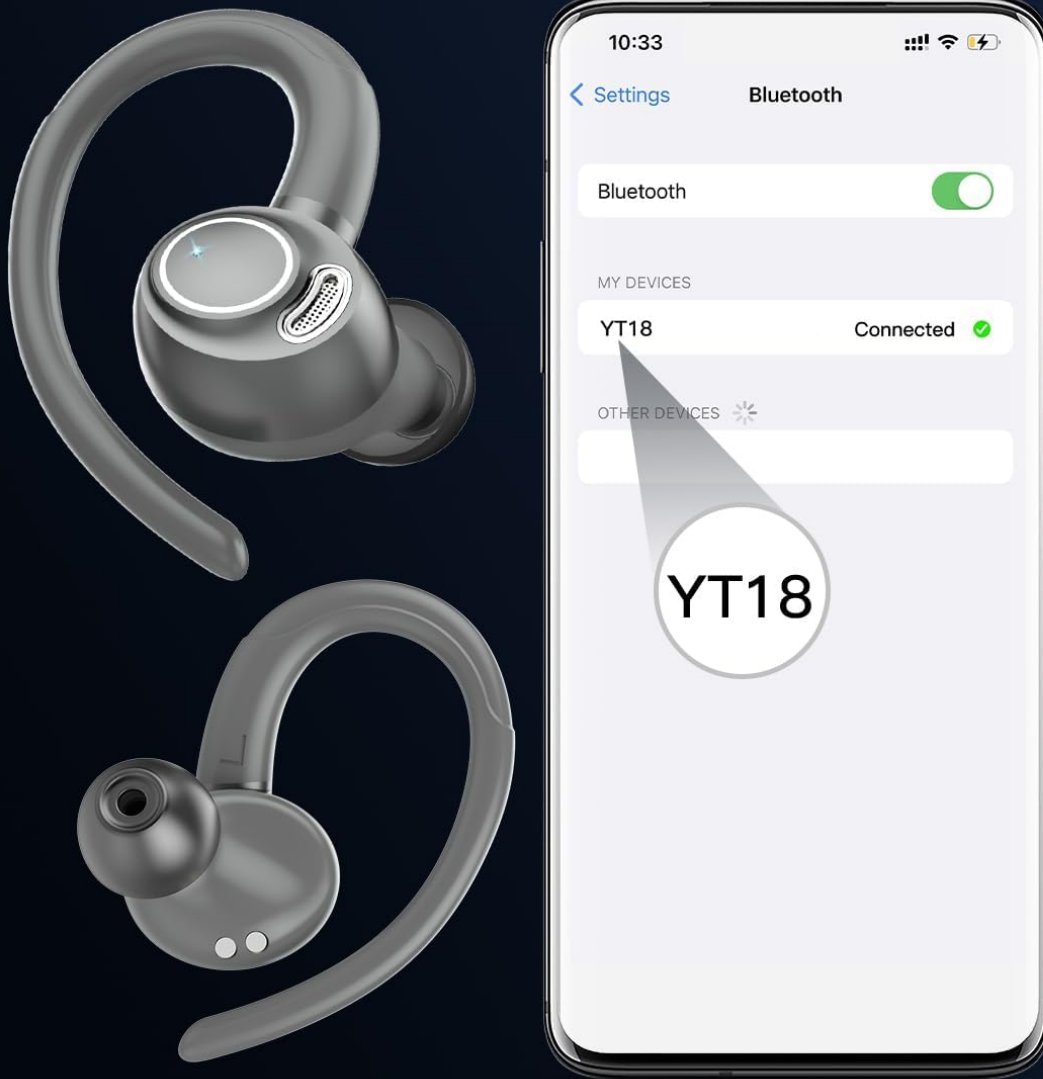


Image: Jesebang YT18 earbuds in their charging case with LED display.

SETUP

Charging the Earbuds and Case

Before first use, fully charge both the earbuds and the charging case. Connect the provided USB-C cable to the charging port on the case and a power source. The LED display will indicate charging status and battery levels.



Image: Charging the Jesebang YT18 earbuds and case via USB-C.

Wearing the Earbuds

For optimal sound and comfort, choose the correct eartip size (S, M, L). Insert the earbud into your ear canal and rotate it gently to secure. Position the flexible ear hook over your ear to ensure a stable fit, especially during physical activity.



Image: Guide for wearing the earbuds stably.

Bluetooth Pairing

1. Ensure the earbuds are charged.
2. Open the charging case. The earbuds will automatically enter pairing mode.
3. On your device (smartphone, tablet, etc.), go to Bluetooth settings and enable Bluetooth.
4. Search for available devices and select "YT18" from the list to connect.
5. Once connected, the earbuds will automatically pair with your device when removed from the case for future use.



Image: One-step auto pairing process for YT18 earbuds.

Video: Official Jesebang YT18 Wireless Earbuds overview, demonstrating features and usage.

OPERATING INSTRUCTIONS

Touch Controls

The earbuds feature high-precision touch sensors for easy control of various functions:

Action	Function
Tap 1x (Left/Right)	Play/Pause Music, Answer/Hang Up Call
Tap 2x (Left)	Volume Down
Tap 2x (Right)	Volume Up
Tap 3x (Left/Right)	Activate Voice Assistant (Siri)
Hold 2s (Left)	Previous Song
Hold 2s (Right)	Next Song



Image: Intelligent touch control functions.

Making and Receiving Calls

The YT18 earbuds are equipped with 4 ENC noise-canceling microphones, ensuring your voice remains

clear during calls by filtering out over 80% of external noise. Use the touch controls to answer, hang up, or reject calls.

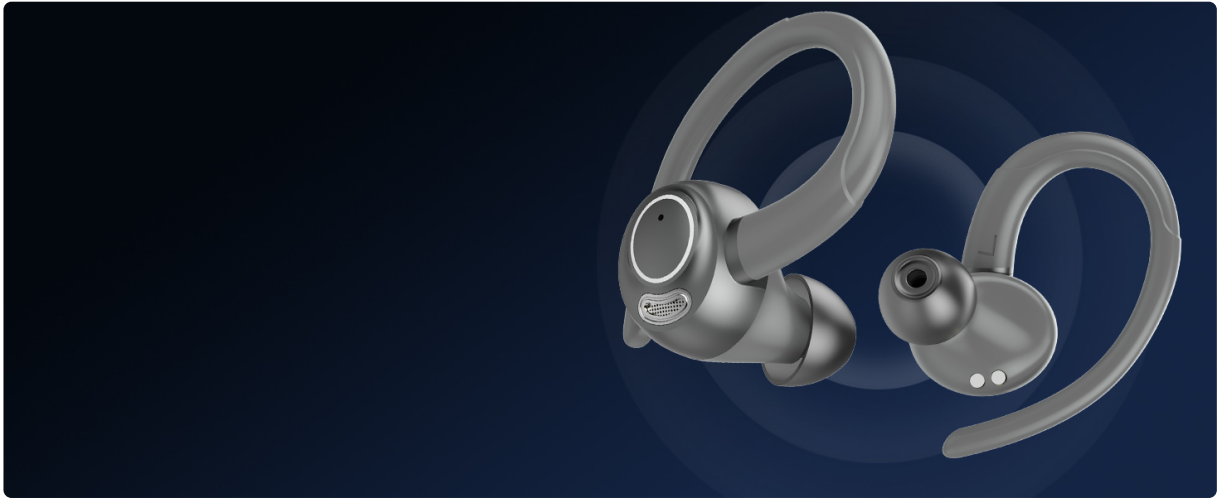


Image: Dual Mic & cVc Noise Cancellation technology.

Audio Quality

Experience lossless sound quality with 14.2mm dynamic drivers, delivering deep bass, balanced mids, and clear highs. This enhances your listening experience, making every note and detail come alive, even during intense activities.



Image: Internal structure for unique stereo sound quality.

MAINTENANCE

Water Resistance

The YT18 earbuds feature IP7-level advanced nano-coating technology, providing excellent waterproof and sweat-resistant capabilities. This makes them suitable for outdoor running, intense workouts, and use in various weather conditions without concern for damage from sweat or rain.



Image: Waterproof and sweat resistance for active use.

Cleaning and Storage

Regularly clean your earbuds and charging case with a soft, dry cloth. Avoid using abrasive materials or harsh chemicals. Store the earbuds in their charging case when not in use to protect them and maintain battery life.

TROUBLESHOOTING

- **Earbuds not pairing:** Ensure both earbuds are charged and removed from the case. Turn off and on your device's Bluetooth, then try pairing again. If issues persist, reset the earbuds (refer to manufacturer's website for specific reset instructions if not in manual).
- **No sound from one earbud:** Place both earbuds back in the case, close it, then open it again. Ensure both earbuds are connected to your device. Check device audio balance settings.
- **Charging issues:** Verify the USB-C cable and power adapter are working correctly. Ensure the charging contacts on the earbuds and inside the case are clean and free of debris.
- **Poor sound quality:** Ensure earbuds are properly seated in your ears with the correct eartip size. Check for any obstructions in the earbud nozzles. Move closer to your connected device to avoid interference.

SPECIFICATIONS

Feature	Detail
Brand	Jesebang
Model Number	YT18
Bluetooth Version	5.4
Bluetooth Range	Up to 15 Meters
Ear Placement	Over Ear
Form Factor	In Ear
Noise Control	Environmental Noise Cancellation (ENC)

Feature	Detail
Audio Driver Type	Dynamic Driver
Audio Driver Size	14.2 Millimeters
Earbud Battery Life	Up to 8 Hours (single charge)
Total Playtime (with case)	Up to 48 Hours
Charging Case Battery Capacity	400 Milliamp Hours
Charging Case Charging Time	Approx. 2 Hours
Water Resistance Level	IP7 Waterproof
Control Method	Touch
Compatible Devices	iOS, Android systems, and various Bluetooth devices



Image: Dimensions of the earbuds and charging case.

WARRANTY INFORMATION

The Jesebang YT18 Wireless Earbuds come with a 2-year warranty. This warranty covers manufacturing defects and ensures your product functions as intended under normal use. Please retain your proof of purchase for warranty claims.

CUSTOMER SUPPORT

For further assistance, technical support, or warranty inquiries, please refer to the contact information provided on the product packaging or visit the official Jesebang website. Our customer service team is available to help with any questions or concerns you may have.