



Manuals.plus /

› Tipdiy /

› Tipdiy G90 Robot Vacuum and Mop Combo User Manual

Tipdiy G90

Tipdiy G90 Robot Vacuum and Mop Combo User Manual

Model: G90 | Brand: Tipdiy

INTRODUCTION

This manual provides essential information for the safe operation, maintenance, and troubleshooting of your Tipdiy G90 Robot Vacuum and Mop Combo. Please read this manual thoroughly before using the product and retain it for future reference. The Tipdiy G90 is designed to provide efficient and automated cleaning for various floor types, combining powerful vacuuming with effective mopping capabilities.

WHAT'S IN THE BOX

Upon unpacking, please verify that all components listed below are present and in good condition.

- Robotic Vacuum and Mop Cleaner (Main Unit)
- Charging Station
- Power Adapter
- Electrically Controlled Water Tank and Dust Collector (Integrated)
- Mop Pad Holder
- Mopping Pad Cloth
- Spare HEPA filter
- 4 Side brushes
- Cleaning brush
- User manual (this document)
- APP instruction

Home Automation Pathfinder

Equipped with a full sensor system that allows it to complete automated cleaning in your home.

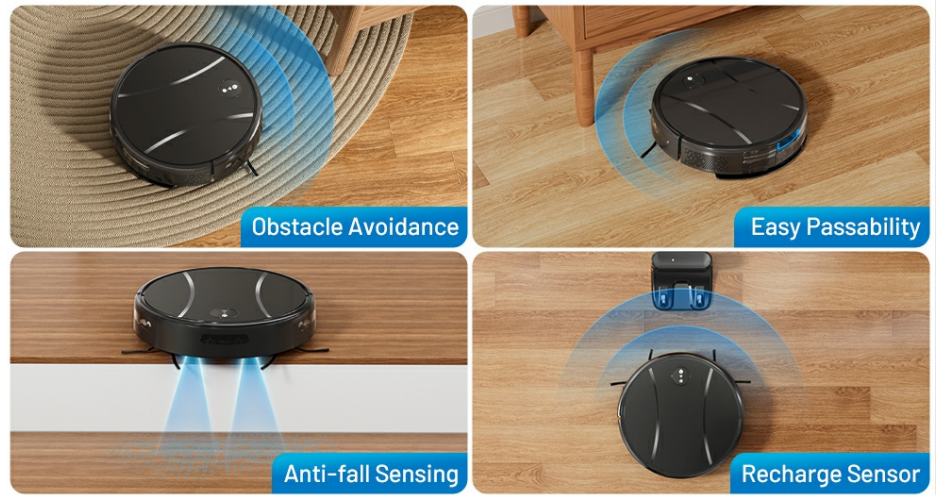


Figure 1: Included Components. This image displays all items typically found within the Tipdiy G90 product packaging, including the robot vacuum, charging station, power adapter, water tank/dust collector, mop pad holder, mop cloth, spare HEPA filter, side brushes, and cleaning brush.

PRODUCT OVERVIEW

The Tipdiy G90 is an advanced robotic cleaning device designed for comprehensive floor care. It features a powerful 4200Pa suction for vacuuming and an integrated mopping system.

Key Features:

- **4200Pa HyperForce Suction:** Effectively removes dust, dirt, and pet hair from various surfaces.
- **Integrated Vacuum and Mop System:** Performs both vacuuming and mopping simultaneously or separately.
- **Intelligent Self-Charging:** Automatically returns to the charging base when battery is low.
- **Smart Sensor Technology:** Detects obstacles, avoids drops, and adapts to different environments.
- **App, Voice, and Remote Control:** Multiple options for convenient operation and customization.
- **Customizable Cleaning:** Define cleaning modes, intensity, and schedules via the mobile application.
- **Long Battery Life:** Up to 120 minutes of cleaning on a single charge.

Main Unit Components:



Figure 2: Top View of Robot. This image shows the main unit with its control buttons on the top surface.

All-floor Extended Mopping

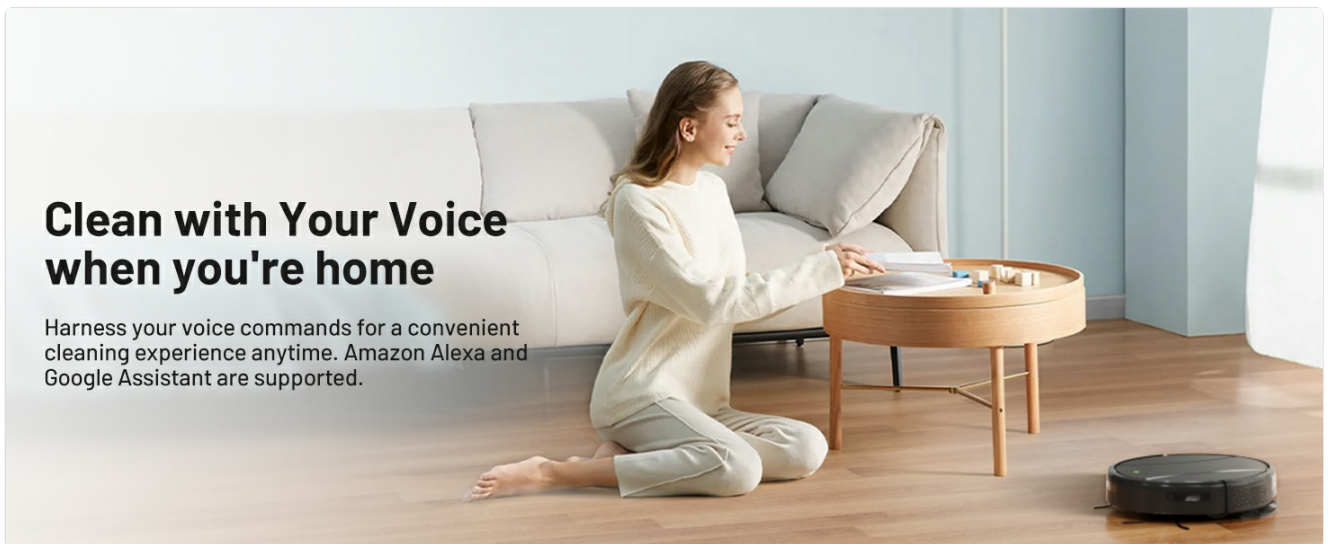
A larger water tank with 4 adjustable settings allows a **2846 sqft** wide range of different floor mopping.



Figure 3: Bottom View of Robot. This image illustrates the underside of the robot, highlighting the cleaning mechanisms such as the main brush, side brushes, and wheels.

SETUP

1. **Unpack the Robot:** Carefully remove the robot and all accessories from the packaging. Remove any protective films or packing materials.
2. **Install Side Brushes:** Attach the side brushes to the designated posts on the bottom of the robot until they click into place.
3. **Place Charging Station:** Position the charging station against a wall in an open area, ensuring there is at least 0.5 meters (1.6 feet) of clear space on both sides and 1.5 meters (5 feet) in front. Plug the power adapter into the charging station and then into a wall outlet.



Clean with Your Voice when you're home

Harness your voice commands for a convenient cleaning experience anytime. Amazon Alexa and Google Assistant are supported.

Figure 4: Intelligent Self-charging. The robot automatically navigates back to its charging station when its battery level is low.

4. **Initial Charge:** Place the robot onto the charging station. Ensure the charging contacts on the robot align with those on the station. The indicator light on the robot will show charging status. For first use, fully charge the robot (approximately 4-5 hours).
5. **Download and Connect App:**
 - Scan the QR code in the APP instruction manual or search for the "Tipdiy Smart" app in your mobile app store.
 - Follow the in-app instructions to register an account and add your G90 robot. This typically involves connecting to the robot's Wi-Fi hotspot temporarily and then connecting it to your home Wi-Fi network.



Figure 5: **Advanced App Control.** The mobile application provides comprehensive control over the robot's functions, including cleaning modes, scheduling, and intensity adjustments.

OPERATING INSTRUCTIONS

Starting a Cleaning Cycle:

- **Manual Start:** Press the power button on the robot or the "Clean" button on the remote control. The robot will begin cleaning in its default mode.
- **App Control:** Open the Tipdy Smart app, select your G90 robot, and tap "Start" or choose a specific cleaning mode.
- **Voice Control:** Integrate your robot with Amazon Alexa or Google Home. Use commands like "Alexa, start cleaning with Tipdy G90" or "Hey Google, tell Tipdy G90 to clean."

Cleaning Modes:

The G90 offers various cleaning modes to suit different needs, accessible via the app or remote control.

- **Smart Cleaning (Auto):** The robot intelligently navigates and cleans the entire accessible area.

- **Edge Cleaning:** The robot cleans along walls and furniture edges.
- **Spot Cleaning:** The robot focuses on a specific area to provide intensive cleaning for concentrated dirt.

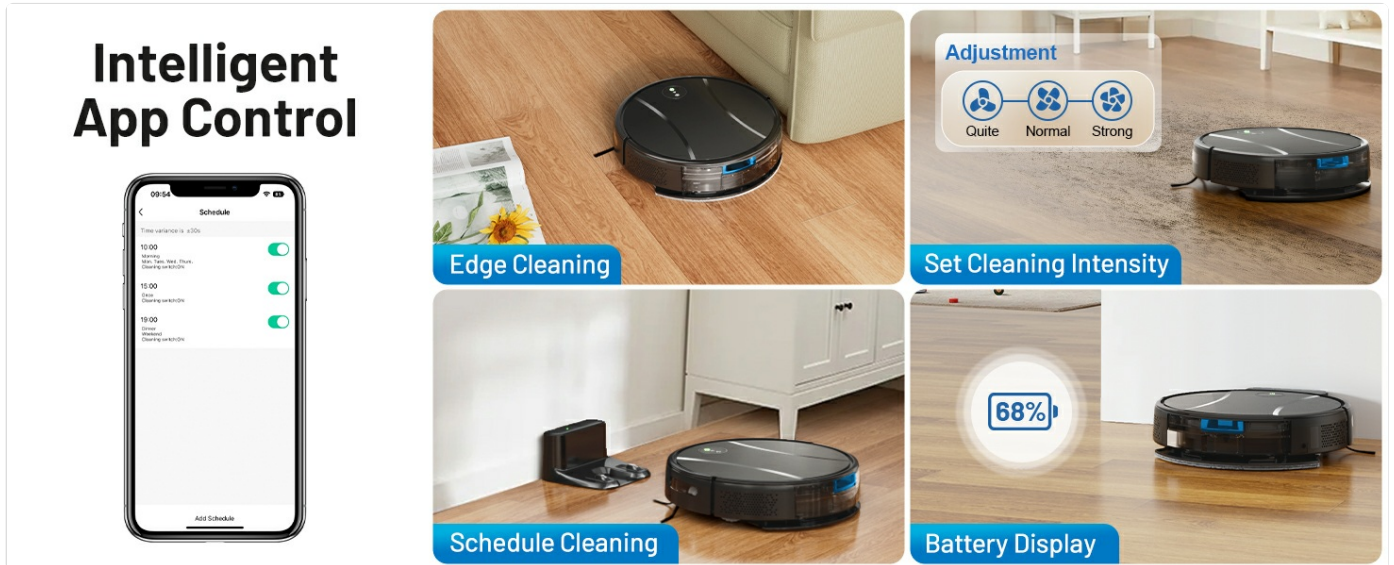


Figure 6: Cleaning Modes and Scheduling. The app allows users to select specific cleaning modes and set cleaning schedules for automated operation.

Mopping Function:

To utilize the mopping function, follow these steps:

1. Remove the integrated water tank and dust collector from the robot.
2. Open the water tank cap and fill it with clean water. Do not use cleaning solutions that are not approved for robot vacuums, as they may clog the system.
3. Attach the mop pad cloth to the mop pad holder, then slide the holder onto the water tank.
4. Reinsert the combined water tank and dust collector into the robot until it clicks into place.
5. Start a cleaning cycle. The robot will automatically dispense water and mop while vacuuming. Water flow can be adjusted via the app.

Obstacle Avoidance with Real-time Sensing

Glide gracefully through different areas, easily identifying
and moving through the various environments



Figure 7: Water Tank and Mop Pad. This image shows the detachable water tank and dust collector unit with the mop pad attached, ready for mopping operations.

Home Automation Pathfinder

Equipped with a full sensor system that allows it to complete automated cleaning in your home.

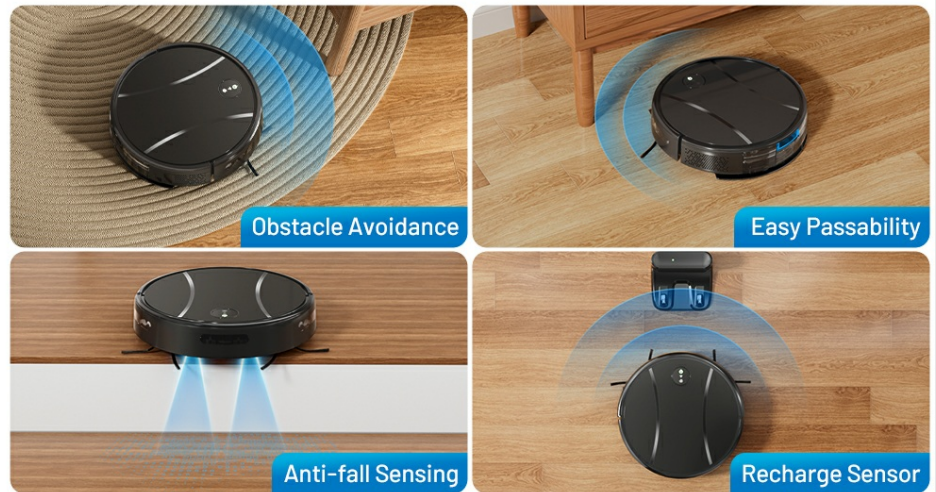


Figure 8: All-floor Extended Mopping. The robot applies water to the floor for effective mopping, with adjustable water flow settings.

MAINTENANCE

Regular maintenance ensures optimal performance and extends the lifespan of your Tipdiy G90 robot.

Emptying the Dustbin:

- Press the release button to remove the integrated water tank and dust collector.
- Open the dustbin cover and empty the contents into a trash bin.
- It is recommended to empty the dustbin after each cleaning cycle.

Cleaning Filters:

- Remove the HEPA filter and sponge filter from the dustbin.
- Tap the HEPA filter gently to remove dust. Do not wash the HEPA filter with water.
- The sponge filter can be rinsed with water. Ensure it is completely dry before reinserting.
- Replace filters every 3-6 months, or as needed, to maintain suction power.

Cleaning Brushes:

- **Main Brush:** Remove the main brush cover and lift out the main brush. Use the provided cleaning tool to cut and remove any tangled hair or debris.
- **Side Brushes:** Periodically check side brushes for wear or entanglement. Remove any hair or debris. Replace worn brushes to ensure effective edge cleaning.

Cleaning Sensors and Charging Contacts:

- Wipe the anti-drop sensors (located on the bottom of the robot) and obstacle sensors (on the front bumper) with a clean, dry cloth.
- Clean the charging contacts on both the robot and the charging station with a dry cloth to ensure proper connection.

Cleaning Mop Pad:

- Remove the mop pad cloth from the holder after each mopping session.
- Rinse the mop pad thoroughly with water and allow it to air dry completely before reuse.

TROUBLESHOOTING

If you encounter issues with your Tipdiy G90, refer to the following common problems and solutions.

| Problem | Possible Cause | Solution |
|-------------------------------|---|---|
| Robot does not turn on. | Low battery; Power switch off. | Charge the robot; Ensure the main power switch (usually on the side or bottom) is in the "ON" position. |
| Robot does not charge. | Charging contacts dirty; Charging station not powered; Robot not properly docked. | Clean charging contacts on both robot and station; Ensure charging station is plugged in; Re-dock the robot, ensuring proper alignment. |
| Reduced suction power. | Full dustbin; Clogged filter; Main brush or side brushes tangled. | Empty dustbin; Clean or replace filters; Clean main brush and side brushes. |
| Robot gets stuck frequently. | Obstacles in cleaning path; Dirty sensors. | Clear cables, rugs, and small objects; Clean obstacle sensors. |
| Mopping function not working. | Water tank empty; Water outlet clogged; Mop pad not attached. | Fill water tank; Clean water outlets; Ensure mop pad is correctly installed. |
| App connection issues. | Incorrect Wi-Fi password; Router too far; Robot not in pairing mode. | Verify Wi-Fi password and network (2.4GHz only); Move robot closer to router; Reset Wi-Fi on robot and re-attempt pairing. |

SPECIFICATIONS

| Feature | Detail |
|--------------------|--|
| Brand | Tipdiy |
| Model Name | G90 |
| Suction Power | 4200Pa |
| Special Features | Integrated Mopping and Vacuum System, APP/Voice/Remote Control, Customize Cleaning Settings, Automatic Self-charging, Electronic Pumped Water Flow, Scheduling Cleaning, High Density Filtration |
| Color | Obsidian Black |
| Product Dimensions | 12"L x 12"W x 2.9"H |
| Filter Type | Washable Multi-layer Filter (including HEPA) |
| Battery Life | 120 minutes |
| Power Source | Battery Powered |
| Batteries Included | Yes (1 D battery required, included) |
| Compatible Devices | Amazon Echo, Google Home, Remote Control, Smartphones |
| Item Weight | 4 pounds |
| UPC | 637609992704 |

WARRANTY AND SUPPORT

The Tipdiy G90 Robot Vacuum and Mop Combo comes with a standard manufacturer's warranty. For specific warranty terms and conditions, please refer to the warranty card included in your product packaging or contact Tipdiy customer support.

For technical assistance, troubleshooting beyond this manual, or warranty claims, please contact Tipdiy customer support through their official website or the contact information provided in your product documentation.