

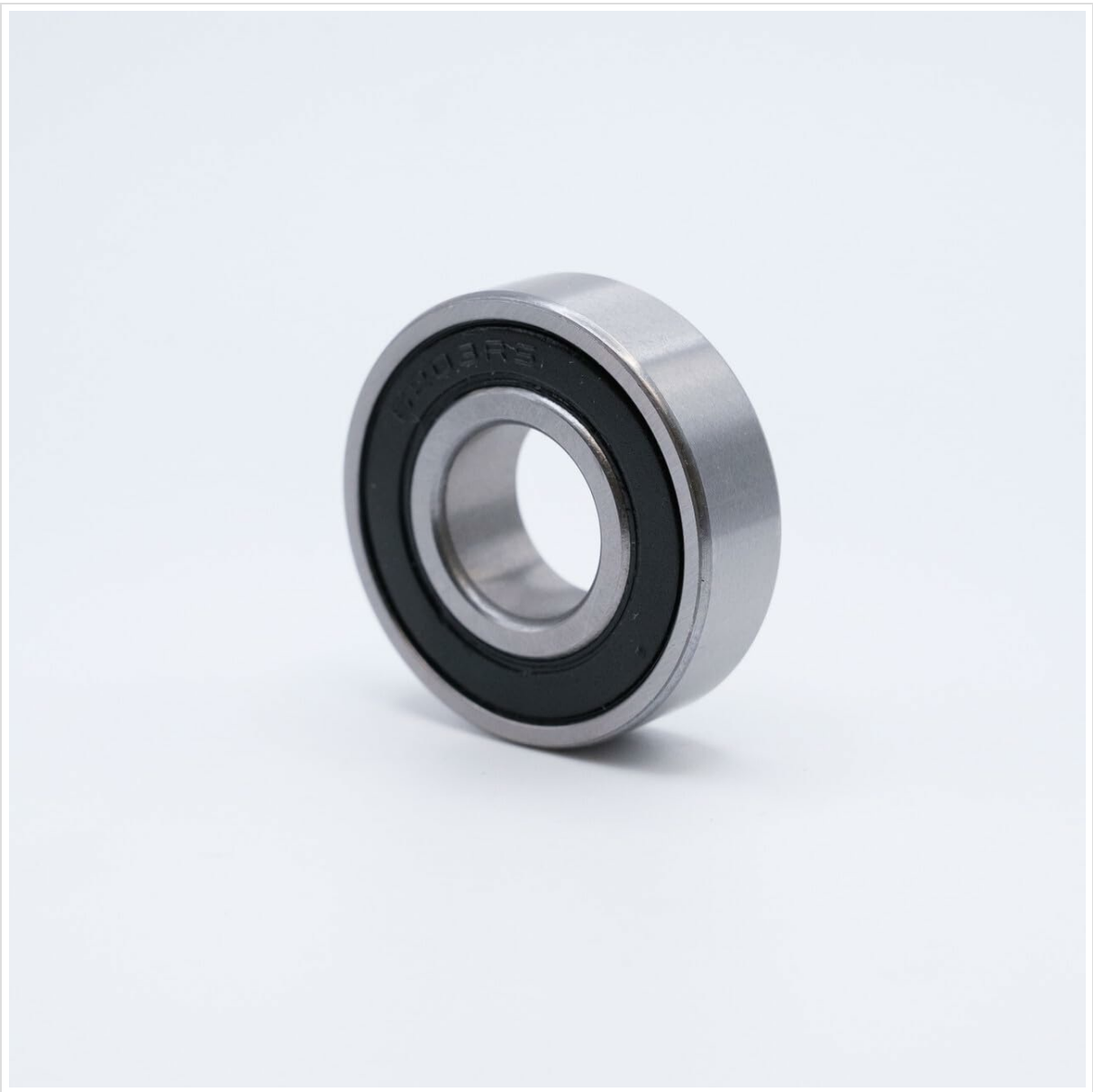
SS6008-2RS

Generic SS6008-2RS Stainless Steel Ball Bearing Instruction Manual

Model: SS6008-2RS

INTRODUCTION

This manual provides essential information for the proper installation, operation, and maintenance of the Generic SS6008-2RS Stainless Steel Ball Bearing. Adhering to these instructions will help ensure optimal performance and longevity of the bearing in its intended applications.



A close-up view of the Generic SS6008-2RS stainless steel ball bearing, featuring its sealed design and metallic finish.

The SS6008-2RS is a precision metric ball bearing designed for applications requiring moderate radial and axial loads. Constructed from stainless steel, it offers enhanced resistance to corrosion, making it suitable for environments with moisture or harsh substances. It features rubber seals on both sides (2RS) and is pre-lubricated with grease for immediate use.

SETUP AND INSTALLATION

Proper installation is crucial for the performance and lifespan of the bearing. Follow these guidelines:

1. **Preparation:** Ensure the shaft and housing surfaces are clean, free from burrs, and within specified tolerances.
2. **Handling:** Handle the bearing with clean hands or gloves to prevent contamination. Do not remove the bearing from its packaging until immediately before installation.
3. **Mounting:** Apply force only to the ring being fitted. For shaft mounting, press on the inner ring. For housing mounting, press on the outer ring. Never strike the outer ring when mounting on a shaft, or the inner ring when mounting into a housing, as this can damage the bearing. Use appropriate tools such as a bearing press or a mounting kit.
4. **Alignment:** Ensure proper alignment during installation to prevent uneven load distribution and premature wear.

5. **Temperature:** For tight fits, heating the bearing (e.g., using an induction heater) or cooling the shaft can facilitate installation. Do not exceed 120°C (248°F) when heating.

OPERATING INSTRUCTIONS

To ensure optimal operation and longevity of the SS6008-2RS bearing, consider the following:

- **Load Limits:** Do not exceed the specified radial and axial load capacities for the bearing. Overloading can lead to premature failure.
- **Speed:** Operate within the recommended speed limits for sealed bearings. Excessive speeds can generate heat and degrade lubrication.
- **Temperature:** Monitor the operating temperature. While the bearing is designed for various conditions, prolonged exposure to extreme temperatures outside its specified range can affect performance and lifespan.
- **Vibration and Noise:** Regularly check for unusual vibration or noise, which can indicate a problem with the bearing or its application.
- **Contamination:** Although sealed, avoid exposing the bearing to excessive dust, dirt, or corrosive liquids that could compromise the seals.

MAINTENANCE

The SS6008-2RS bearing is pre-lubricated and sealed for life under normal operating conditions, minimizing maintenance requirements. However, periodic inspection is recommended:

- **Visual Inspection:** Periodically inspect the bearing and its surrounding area for signs of damage, corrosion, or seal integrity issues.
- **Noise and Vibration Check:** Listen for any unusual noises or feel for excessive vibration during operation.
- **Temperature Monitoring:** Check for abnormal heat generation, which could indicate lubrication issues or excessive load.
- **Cleaning:** If the exterior of the bearing becomes dirty, clean it gently with a soft cloth. Avoid using high-pressure washes directly on the seals.
- **Replacement:** Replace the bearing if significant wear, damage, or excessive play is detected.

TROUBLESHOOTING

Refer to the table below for common issues and potential solutions:

Problem	Possible Cause	Solution
Excessive Noise	Improper installation, contamination, worn components, excessive load.	Verify installation, check for debris, inspect for wear, reduce load if possible.
Overheating	Excessive speed, misalignment, insufficient clearance, excessive load.	Reduce speed, check alignment, ensure proper fit, reduce load.
Premature Failure	Improper installation, overloading, contamination, material fatigue.	Review installation procedures, ensure correct load, protect from contaminants, replace bearing.

Problem	Possible Cause	Solution
Vibration	Unbalance, misalignment, worn bearing, loose components.	Check for balance, verify alignment, inspect and replace bearing if worn, tighten components.

SPECIFICATIONS

Feature	Detail
Model Number	SS6008-2RS
Bearing Type	Deep Groove Ball Bearing
Material	Stainless Steel
Inner Diameter (d)	40 mm
Outer Diameter (D)	68 mm
Width (B)	15 mm
Seals	Rubber Sealed (2RS) on both sides
Lubrication	Pre-lubricated with Grease
Corrosion Resistance	High, due to Stainless Steel construction

WARRANTY AND SUPPORT

Information regarding warranty coverage and customer support for this product is typically provided at the point of purchase or through the manufacturer's official channels. Please refer to your purchase documentation or contact the seller for specific details regarding warranty terms, conditions, and how to obtain support.

Related Documents - SS6008-2RS

VEVOR
Affordable. Reliable. Home Improvement.

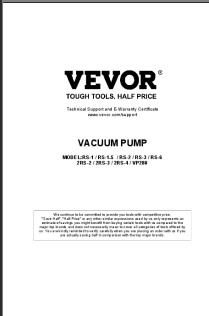
VACUUM PUMP
MODEL: RS-1 / RS-1.5 / RS-2 / RS-3 / RS-6
2RS-1 / 2RS-2 / 2RS-3 / 2RS-4 / VP280

[VEVOR Vacuum Pump User Manual and Technical Specifications](#)
Comprehensive guide to VEVOR vacuum pumps, including technical parameters, operating instructions, maintenance, troubleshooting, and exploded views for models RS-1, RS-1.5, RS-2, RS-3, RS-6, 2RS-1, 2RS-2, 2RS-3, 2RS-4, and VP280.



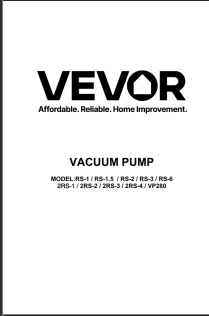
[Armortek Panther G \(1944\) 1/6th Scale Metal Model Kit Build Instructions](#)

Detailed build instructions for the Armortek 1/6th scale metal model kit of the Panther G (1944) tank, covering safety, tools, fasteners, parts list, and assembly steps with textual descriptions of diagrams.



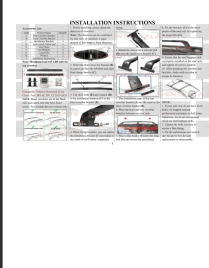
[VEVOR Vacuum Pump User Manual and Technical Specifications](#)

Comprehensive guide for VEVOR vacuum pumps, including operating instructions, maintenance, troubleshooting, and detailed technical parameters for models RS-1, RS-1.5, RS-2, RS-3, RS-6, 2RS-2, 2RS-3, 2RS-4, and VP280.



[VEVOR Vacuum Pump Manual: Models RS-1, RS-1.5, RS-2, RS-3, RS-6, 2RS-1, 2RS-2, 2RS-3, 2RS-4, VP280 - Technical Specs & Operation Guide](#)

Comprehensive user manual for VEVOR vacuum pumps, featuring technical specifications, operating instructions, safety guidelines, maintenance procedures, and troubleshooting for models RS-1, RS-1.5, RS-2, RS-3, RS-6, 2RS-1, 2RS-2, 2RS-3, 2RS-4, and VP280.



[ALAVENTE Roof Rack Cross Bars Installation Instructions for Chevy Trax](#)

Detailed installation guide for ALAVENTE heavy-duty roof rack cross bars, compatible with Chevy Trax 2RS ACTIV LT 2023-2024. Includes parts list, step-by-step instructions, load capacity, driving, and maintenance tips.



[TRiPEAK JETSTREAM PRO BB86 Bottom Bracket Installation and Maintenance Guide](#)

Comprehensive guide for installing and maintaining the TRiPEAK JETSTREAM PRO BB86 Twist-Fit Bottom Bracket for Shimano HT II cranksets. Includes specifications, safety, tools, installation steps, and maintenance procedures.