

Manuals+

[Q & A](#) | [Deep Search](#) | [Upload](#)

Manuals.plus /

› [Fitifun](#) /

› Fitifun M10 10.1-inch Android 14 Tablet User Manual

Fitifun M10

Fitifun M10 10.1-inch Android 14 Tablet User Manual

Model: M10

1. INTRODUCTION

Welcome to the user manual for your new Fitifun M10 10.1-inch Android 14 Tablet. This guide provides essential information on setting up, operating, maintaining, and troubleshooting your device. Please read this manual thoroughly to ensure optimal performance and longevity of your tablet.

The Fitifun M10 tablet features a 10.1-inch IPS display with 1280x800 resolution, powered by a quad-core processor and running Android 14. It includes 4GB RAM (2GB+2GB expansion) and 32GB internal storage, expandable up to 1TB with an SD card. Equipped with a 6000mAh battery and dual 2MP cameras, it is designed for a variety of tasks from entertainment to productivity.

2. PACKAGE CONTENTS

Please check the package for the following items:

- Fitifun M10 Tablet Unit
- USB-C Charging Cable
- Power Adapter
- User Manual (this document)

3. DEVICE LAYOUT

Familiarize yourself with the physical features of your Fitifun M10 tablet.



Image 3.1: Front and back view of the Fitifun M10 Tablet. The front features the 10.1-inch display and the front-facing camera. The back panel shows the rear camera and brand logo.

- **Front Camera:** Located above the screen, used for video calls and selfies.
- **Rear Camera:** Located on the back panel, used for taking photos and videos.
- **Power Button:** Typically on the side or top edge, used to turn the tablet on/off or put it to sleep.
- **Volume Buttons:** Usually adjacent to the power button, used to adjust audio volume.
- **USB-C Port:** Located on the bottom or side, used for charging and data transfer.
- **MicroSD Card Slot:** Often covered by a small tray on the side, allows for storage expansion.
- **Speaker:** Provides audio output.
- **Microphone:** Used for voice input during calls or recordings.

4. SETUP

4.1 Charging the Battery

Before first use, fully charge your tablet. Connect the USB-C cable to the tablet's USB-C port and the other end to the power adapter. Plug the adapter into a wall outlet. The battery indicator on the screen will show charging status. A full charge typically takes 3-4 hours.

4.2 Powering On/Off

- **To Power On:** Press and hold the Power button until the Fitifun logo appears on the screen.
- **To Power Off:** Press and hold the Power button until a power-off menu appears. Select "Power off" and confirm.
- **To Sleep/Wake:** Briefly press the Power button to put the tablet to sleep or wake it up.

4.3 Initial Setup

Upon first power-on, the tablet will guide you through the initial setup process:

1. Select your preferred language.
2. Connect to a Wi-Fi network.
3. Sign in with your Google account or create a new one. This is necessary to download apps from the Google Play Store.
4. Review and accept the terms and conditions.
5. Set up screen lock (PIN, pattern, or password) for security.

4.4 Inserting a MicroSD Card

The tablet supports MicroSD cards up to 1TB for expanded storage.

1. Locate the MicroSD card slot on the side of the tablet.
2. Gently open the slot cover or eject the tray using the provided tool (if applicable).
3. Insert the MicroSD card with the gold contacts facing down, ensuring it clicks into place.
4. Close the slot cover or reinsert the tray. The tablet will detect the new storage.

5. OPERATING INSTRUCTIONS

5.1 Basic Navigation

The Fitifun M10 uses touch gestures for navigation:

- **Tap:** Select an item or open an app.
- **Tap and Hold:** Access contextual menus or move icons.
- **Swipe:** Scroll through screens, lists, or pages.
- **Pinch:** Zoom in or out on images and web pages.

5.2 Connecting to Wi-Fi

To connect to the internet:

1. Go to **Settings > Network & internet > Wi-Fi**.
2. Toggle **Wi-Fi On**.
3. Select your desired network from the list.
4. Enter the password if prompted and tap **Connect**.

5.3 Downloading Applications

Your tablet is GMS certified, allowing full access to the Google Play Store.

Android 14 & GMS Certified

Just enjoy a diverse selection of any apps and games via Google Play Store.



Image 5.1: The Fitifun M10 tablet displaying the Android 14 interface with various pre-installed and downloadable applications, highlighting GMS certification for Google Play Store access.

1. Open the **Play Store** app.
2. Search for the app you wish to download.
3. Tap **Install** and follow the on-screen prompts.

5.4 Using the Camera

The tablet is equipped with dual 2MP cameras.



Impressive Dual Camera



Image 5.2: A visual representation of the tablet's dual 2MP cameras, showing example photos taken with both the front and rear lenses.

1. Open the **Camera** app.
2. Tap the camera icon to switch between front and rear cameras.
3. Tap the shutter button to take a photo or start/stop video recording.

5.5 Storage Management

Your tablet has 32GB of internal storage and supports up to 1TB expansion via MicroSD card.

High Capacity & Quad-Core CPU

Tablet supports 1 TB TF Card expansion, it can easily store all kinds of files, songs, pictures, videos and more



4(2+2)GB
RAM



32GB
ROM



1TB
TF Expandable

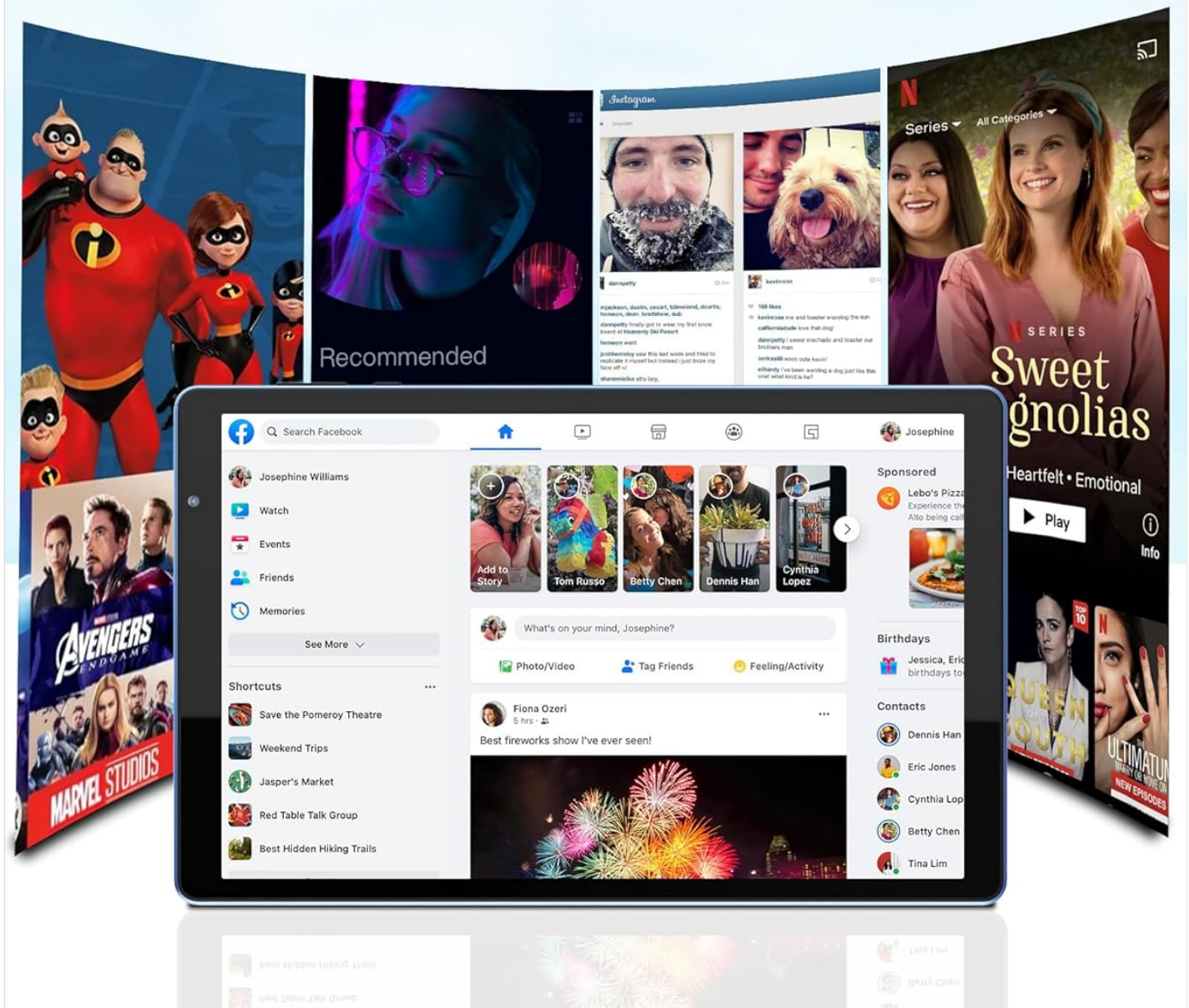


Image 5.3: A graphic illustrating the tablet's memory specifications, including 4GB RAM, 32GB internal storage (ROM), and the capability for 1TB MicroSD card expansion.

To check storage usage, go to **Settings > Storage**. You can move files to the MicroSD card to free up internal space.

6. MAINTENANCE

6.1 Cleaning the Device






Use a soft, lint-free cloth to clean the screen and body of the tablet. Avoid using harsh chemicals or abrasive materials, which can damage the screen or finish.

6.2 Battery Care

The tablet is equipped with a 6000mAh battery, providing 8-10 hours of mixed use.

6000mAh
Long Lasting Battery

Type-c charging port for fast charging, so you can stay online all day without worry.

 4hrs Game	 5hrs HD video	 6hrs Website browse	 8hrs Music	 72hrs Standby
---	---	---	--	---

The graphic shows a blue tablet with its back cover removed, revealing internal components. A large green battery pack is visible, with the text "6000mAh" overlaid on it. Above the tablet, a dashed line with a sun icon on the left and a moon icon on the right suggests a full day of use.

Image 6.1: A graphic illustrating the long-lasting 6000mAh battery, showing estimated usage times for various activities like gaming, HD

video playback, web browsing, music, and standby.

- Avoid exposing the tablet to extreme temperatures.
- Do not let the battery completely drain frequently.
- Use only the provided or certified charging accessories.

6.3 Software Updates

Regularly check for and install software updates to ensure your tablet has the latest features and security patches. Go to **Settings > System > System update**.

6.4 Storage Optimization

Periodically clear cache data from apps and uninstall unused applications to maintain optimal performance. You can also utilize cloud storage services to back up photos and videos.

7. TROUBLESHOOTING

Here are solutions to common issues you might encounter:

7.1 Tablet Does Not Power On

- Ensure the battery is charged. Connect the tablet to the charger for at least 30 minutes.
- Press and hold the Power button for 10-15 seconds to perform a forced restart.

7.2 Wi-Fi Connection Issues

- Check if Wi-Fi is enabled in Settings.
- Restart your Wi-Fi router and the tablet.
- Forget the network in Wi-Fi settings and reconnect.

7.3 Apps Crashing or Freezing

- Close and reopen the app.
- Clear the app's cache: **Settings > Apps > [App Name] > Storage & cache > Clear cache**.
- Ensure the app is updated to its latest version from the Play Store.

7.4 Slow Performance

- Close unnecessary background apps.
- Free up storage space by deleting unused files or apps.
- Restart the tablet regularly.

8. SPECIFICATIONS

Detailed technical specifications for the Fitifun M10 Tablet:

High Quality Display


10.1"
HD Screen


1280x800
FHD Resolution


16:10
Aspect ratio



Image 8.1: The tablet's display specifications, highlighting its 10.1-inch HD screen, 1280x800 Full HD resolution, and 16:10 aspect ratio for an optimal viewing experience.

Feature	Specification
Model Name	M10
Operating System	Android 14

Screen Size	10.1 Inches
Screen Resolution	1280 x 800 Pixels
Processor	Quad-Core Processor (Intel)
RAM	4GB (2GB+2GB expansion)
Internal Storage (ROM)	32GB
Expandable Storage	Up to 1TB via MicroSD card
Graphics Coprocessor	Adreno 540
Front Camera	2MP
Rear Camera	2MP
Battery Capacity	6000mAh
Average Battery Life	8-10 Hours (mixed use)
Wireless Type	802.11ax (Single-band WiFi 6)
Item Weight	1.54 pounds
Product Dimensions	30 x 30 x 6 inches

9. WARRANTY AND SUPPORT

For warranty information and customer support, please refer to the warranty card included in your product packaging or visit the official Fitifun website. Keep your purchase receipt as proof of purchase for warranty claims.