

BMAX I10 Plus

Bmax I10 Plus Android 16 Tablet User Manual

MODEL: I10 PLUS

Brand: BMAX

1. Introduction

This manual provides essential information for setting up, operating, and maintaining your Bmax I10 Plus Android 16 tablet. Please read this manual thoroughly before using your device to ensure proper functionality and to maximize your user experience.

2. Product Overview

The Bmax I10 Plus tablet is designed for versatile use, featuring a 10-inch IPS display, an 8-core T7250 CPU, and the Android 16 operating system. It offers robust performance for various applications, entertainment, and productivity tasks.

Android16 OS 発売!

より安全・よりスムーズ・より効率的



プライバシー
保護



効率的な
運用



ユーザー交互
最適化



多様な分屏
スタイル

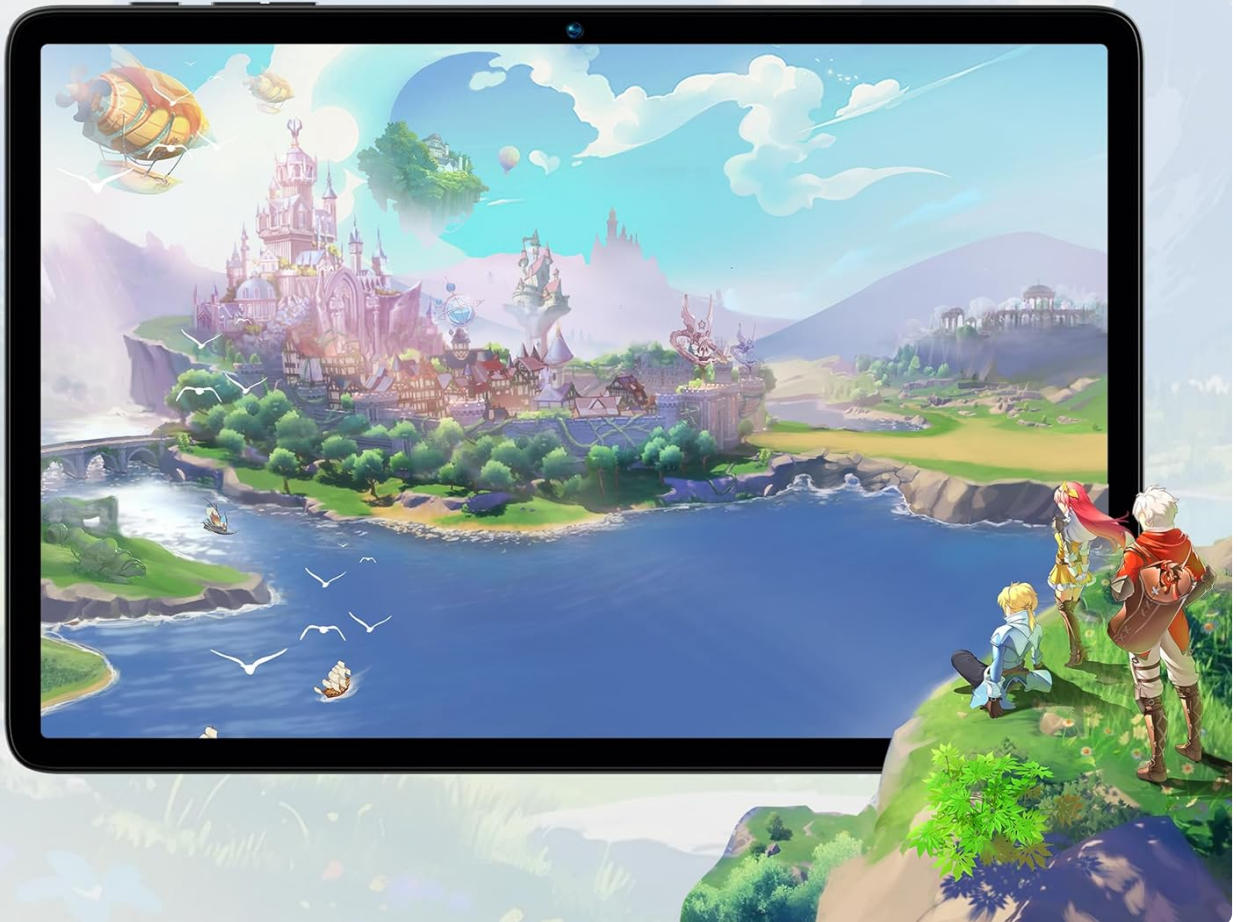


Figure 2.1: Front and back view of the Bmax I10 Plus tablet.

BMAX I10 Plus

Android 16 初登場

T7250|TUV認証|TDDI技術|6000mAh
GMS認証|Widevine L1 対応|Netflix L1



10.1インチ
IPSディスプレイ



リング対称設計
デュアルカメラ



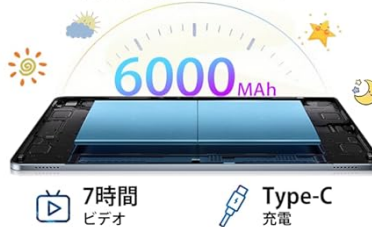
WiFi 5
GPS

Bluetooth 5.2

Unisoc T7250
オクタコア



大容量バッテリー



Android 16 システム



有線イヤホン、スタンド、OTG 変換
アダプター、タッチペンをプレゼント



ステレオスピーカー
3.5mm オーディオジャック
FM ラジオに対応



金属一体型筐体
8.6mm の厚さ、535g の重量



顔ロック解除



Figure 2.2: An overview of the tablet's key features including display, processor, battery, and connectivity.

Key Features:

- **Operating System:** Latest Android 16 for improved compatibility and privacy.
- **Processor:** High-performance 8-core T7250 CPU for smooth operation.
- **Memory & Storage:** 20GB (4GB physical + 12GB virtual) RAM and 128GB ROM, expandable up to 1TB via microSD card.
- **Display:** 10.1-inch IPS in-cell TDDI display with 1280x800 resolution, 16:10 aspect ratio, and wide viewing angles.
- **Battery:** 6000mAh battery for extended usage, with Type-C charging.
- **Connectivity:** Dual-band 2.4GHz/5GHz Wi-Fi, Bluetooth 5.2, FM Radio, and OTG support.
- **Multimedia:** Dual speakers, Widevine L1 and Netflix L1 certification for high-definition streaming.
- **Security:** Face recognition for convenient unlocking.
- **Additional Features:** Screen split function, 10-point touch, and parental controls for Kids Space.

3. Setup

Follow these steps to set up your Bmax I10 Plus tablet for the first time.

3.1. Initial Power On

1. Press and hold the power button located on the side of the tablet until the BMAX logo appears.
2. The tablet will boot up and display the initial setup screen.

3.2. Language Selection

Select your preferred system language during the initial setup. For Japanese users, follow the steps in the video below to set the system language to Japanese.

Video 3.1: Guide on how to change the system language to Japanese during initial setup.

1. On the welcome screen, tap on the current language (e.g., "English (United States)").
2. Scroll down the list and select " " (Japanese).
3. Confirm the language change when prompted.

3.3. Wi-Fi Connection

It is recommended to skip Wi-Fi connection during initial setup if your network environment is unstable, to prevent interruptions. You can connect to Wi-Fi later from the settings menu.

1. On the Wi-Fi connection screen, select "Set up offline" ().
2. Confirm by clicking "Continue" ().

3.4. Date and Time Settings

1. On the Date and Time screen, tap on the time zone (e.g., "Shanghai").
2. Scroll down and select " " (Japan Standard Time).
3. Adjust the date and time if necessary, then tap "Next" ().

3.5. Google Services

1. Review the Google Services options.
2. Tap "More" () to view all options.
3. Tap "Agree" () to proceed.

3.6. Included Accessories

Your Bmax I10 Plus tablet comes with a 4-point combo set, which includes:

- Wired earphones
- Tablet stand
- OTG adapter
- Stylus pen



Figure 3.1: The Bmax I10 Plus tablet shown with its included accessories.

4. Operating Instructions

4.1. Basic Navigation

- **Touch:** Tap to select items, open apps, or confirm actions.
- **Swipe:** Drag your finger across the screen to scroll through content or switch between home screens.
- **Pinch-to-zoom:** Use two fingers to zoom in or out on images and web pages.
- **10-point Touch:** The tablet supports 10-point multi-touch for enhanced interaction and gaming.

4.2. Screen Split Function

The screen split feature allows you to use two applications simultaneously, enhancing multitasking efficiency.

1. Open the first application you wish to use.
2. Swipe up from the bottom of the screen to access the recent apps menu.
3. Long-press the icon of the first app and select "Split screen" or a similar option.
4. Choose the second application from the recent apps or app drawer to fill the other half of the screen.

4.3. FM Radio

To use the FM radio function, connect wired headphones to the tablet. The headphones act as an antenna.

1. Plug your wired earphones into the 3.5mm audio jack.
2. Open the FM Radio application.
3. Scan for available stations or manually tune to your desired frequency.

4.4. OTG Functionality

The On-The-Go (OTG) function allows you to connect USB devices like flash drives, keyboards, or mice to your tablet using the included OTG adapter.

1. Connect the OTG adapter to the tablet's Type-C port.
2. Plug your USB device into the OTG adapter.
3. The tablet should automatically detect the connected device. For storage devices, you can access files through the File Manager app.

4.5. Face Recognition

Set up face recognition for quick and secure unlocking of your tablet.

1. Go to **Settings > Security & privacy > Face unlock**
2. Follow the on-screen instructions to register your face. Ensure good lighting and hold the tablet at eye level.
3. Once registered, you can unlock your tablet by simply looking at the front camera.

4.6. Kids Space and Parental Controls

The Bmax I10 Plus tablet is suitable for children, offering parental control features to manage usage time and content access. The Kids Space feature provides a curated environment for children.

Video 4.1: Demonstration of the Kids Space feature and parental controls on the tablet.

- Access Kids Space from the app drawer or a dedicated icon.
- Use parental controls (often via Google Family Link) to set time limits, manage app access, and filter content.
- Ensure your child only accesses appropriate and educational content.

5. Maintenance

5.1. Battery Care

- To prolong battery life, avoid fully discharging the battery frequently.
- Use the provided Type-C charger for optimal charging.
- Avoid exposing the tablet to extreme temperatures, as this can degrade battery performance.

5.2. Storage Management

The tablet comes with 128GB of internal storage, expandable up to 1TB with a microSD card.

- Regularly clear unnecessary files and cache to free up storage space.
- Transfer large files (photos, videos) to a microSD card or cloud storage to prevent internal storage from filling up.
- To insert a microSD card, locate the card slot on the side of the tablet and gently push the card in until it clicks.

5.3. Cleaning the Device

- Use a soft, lint-free cloth to clean the screen and body of the tablet.
- Avoid using harsh chemicals or abrasive materials, as these can damage the screen or finish.
- Do not spray cleaners directly onto the screen. Apply them to the cloth first.

6. Troubleshooting

If you encounter issues with your Bmax I10 Plus tablet, refer to the following common solutions:

- **Device not turning on:** Ensure the battery is charged. Connect the tablet to the charger and wait a few minutes before attempting to power it on again.
- **Screen unresponsive:** Try restarting the tablet by holding the power button for about 10-15 seconds until it powers off, then power it on normally.
- **Wi-Fi connection issues:** Check if Wi-Fi is enabled in settings. Restart your router and the tablet. Ensure you are within range of the Wi-Fi signal.
- **Apps crashing or freezing:** Close and reopen the app. Clear the app's cache (Settings > Apps > [App Name] > Storage & cache > Clear cache). If the issue persists, consider reinstalling the app.
- **Slow performance:** Close unused apps running in the background. Clear cache and temporary files. Ensure sufficient storage space is available.
- **Battery draining quickly:** Reduce screen brightness. Disable unused features like Bluetooth or GPS. Close background apps.

If these steps do not resolve your issue, please contact customer support for further assistance.

7. Specifications

Feature	Description
Brand	BMAX
Model Name	I10 Plus
Operating System	Android 16
CPU	Unisoc T7250 Octa-core, 1.8 GHz
GPU	ARM Mali-G57
RAM	20GB (4GB physical + 12GB virtual)
Internal Storage (ROM)	128GB
Expandable Storage	Up to 1TB via microSD card
Screen Size	10.1 inches
Display Type	IPS in-cell TDDI
Resolution	1280x800 pixels
Battery Capacity	6000mAh
Charging Port	Type-C
Wi-Fi	2.4GHz/5GHz (802.11ac, 802.11ax)
Bluetooth	5.2
Audio	Dual Speakers, 3.5mm headphone jack

Weight	850 g
Dimensions	33.9 x 20.2 x 3.7 cm (Package)

8. Warranty and Support

Your BMAX I10 Plus tablet comes with comprehensive customer support and warranty coverage.

8.1. Warranty Information

- **1-Year Warranty:** The tablet is covered by a 1-year warranty service from the date of purchase.
- **30-Day Refund Policy:** Products purchased from our store are eligible for a 30-day refund.
- This warranty covers manufacturing defects and malfunctions under normal use. It does not cover damage caused by misuse, accidents, or unauthorized repairs.

安心の選択 品質の保証



30日間の
安心ショッピング保証

30日間
安心返品

お客様の満足は私たちの前進の原動力です。私たちは日々精進して、より良い体験をお客様に提供するために努めています。私たちの製品を使用していただく中で、ご質問や困ったことがあれば、いつでもお問い合わせください。私たちの専門技術者が全力を尽くして、お客様の問題解決をサポートし、より優れたサービスをお楽しみいただけます。

購入日から
30日以内に

当社は返品、品替え、または
返品と同時の返金のサービス
を提供することができます。

購入日を基準に
30日を超えた場合

当社は専門的で効率的な修理サービス
を提供いたします。お客様の満足と信頼こそ、当社が絶えず追求し、努力する
方向です。

Figure 8.1: Visual representation of the 1-year warranty service.

8.2. Customer Support

If you encounter any issues or have questions regarding your tablet, please contact our customer support team.

- **Contact Method:** For support, please navigate to your Amazon account, then to 'Order History', select the relevant order, and click 'Contact Seller'.
- Our support staff aims to respond to inquiries within 24 hours.



Figure 8.2: Information on how to contact customer support for assistance.