

HITTIONA F2

HITTIONA F2 Hot Air Styler & Hair Styler Instruction Manual

1. IMPORTANT SAFETY INFORMATION

Please read all instructions carefully before using this appliance. Keep this manual for future reference.

- **Water Hazard:** Do not use this appliance near bathtubs, showers, basins, or other vessels containing water.
- **Electrical Safety:** Always unplug the appliance immediately after use. Do not reach for an appliance that has fallen into water; unplug it immediately.
- **Heat Safety:** This appliance generates heat. Use caution when handling hot attachments. Always use the provided heat-protective glove when changing or handling hot attachments.
- **Children:** Keep out of reach of children. This appliance is not intended for use by persons with reduced physical, sensory, or mental capabilities, or lack of experience and knowledge, unless they have been given supervision or instruction concerning use of the appliance by a person responsible for their safety.
- **Ventilation:** Do not block air openings or place on a soft surface, such as a bed or couch, where air openings may be blocked. Keep air openings free of lint, hair, and the like.
- **Damage:** Do not operate any appliance with a damaged cord or plug, or if the appliance malfunctions or has been dropped or damaged in any manner.

2. PACKAGE CONTENTS

Your HITTIONA F2 Hot Air Styler package includes the following items:

- 1 x Main Styler Unit
- 1 x Fast Drying Hair Blow Dryer Nozzle
- 1 x Large Volumizing Brush
- 1 x Round Brush for Loose Curls
- 1 x Straightening Brush
- 2 x 1.25" Auto-Wrap Air Curlers (Left & Right)
- 1 x Travel/Storage Bag

- 1 x Heat-Protective Glove

High-Speed Hair Multi-Stylers

No Heat Damage, Create Salon-Looking Styles at Home with Ease

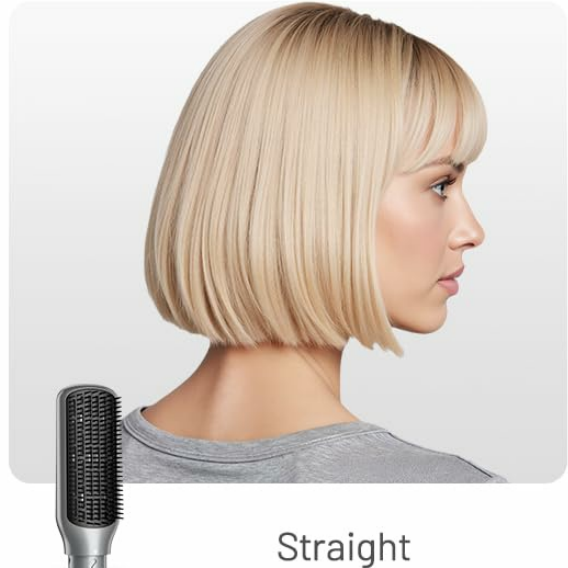
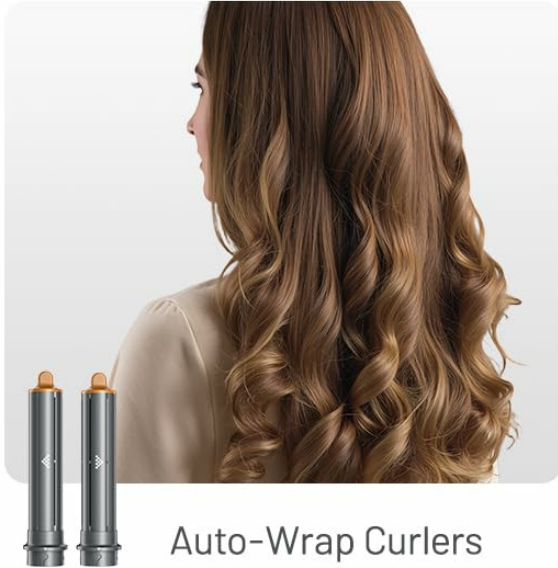
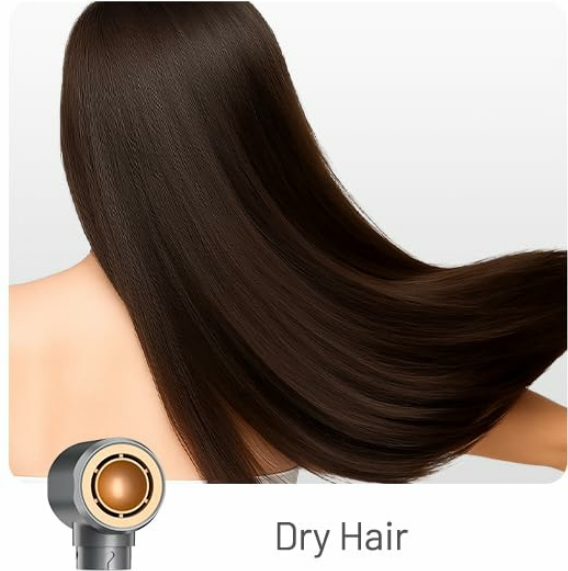


Image: The HITTIONA F2 Hot Air Styler main unit and its six interchangeable attachments, including the fast drying nozzle, two curling barrels, two brush heads, and a straightening brush, neatly arranged.

3. PRODUCT OVERVIEW

Main Styler Unit

The main unit features a powerful 110,000 RPM brushless motor and delivers 23m/s high-speed airflow for efficient drying and styling. It includes intuitive controls for power, temperature, and airflow settings, along with a cool shot button to set your style.



Image: A detailed view of the HITTIONA F2 main styler unit, highlighting the power button, temperature and airflow controls, and the cool shot button.

Attachments

- **Fast Drying Hair Blow Dryer Nozzle:** Designed for quick pre-drying and initial moisture removal.
- **Large Volumizing Brush:** Features frizz-reducing dual bristles to create lift, add volume and bounce, and smooth hair without pulling or tangling. Ideal for freshly-washed hair that is about 70% dry.
- **Round Brush for Loose Curls:** Similar to the volumizing brush, this attachment is excellent for creating loose curls, adding volume, and styling bangs.
- **Straightening Brush:** Provides a smooth, frizz-free, and straight finish to your hair.
- **1.25" Auto-Wrap Air Curlers (Left & Right):** These barrels use directional airflow to automatically wrap and curl sections of hair, creating bouncy, voluminous curls without extreme heat. Two barrels are included for curling in different directions (clockwise and counter-clockwise).

4. SETUP AND ATTACHMENT INSTALLATION

The HITTIONA F2 features an effortless one-click installation system for its attachments.

1. **Attaching an Attachment:** Align the desired attachment with the main styler unit. Push the attachment onto the unit until it clicks securely into place. Ensure the lock symbol is engaged.
2. **Detaching an Attachment:** Press the release button (indicated by a push symbol) on the main unit and gently pull the attachment off. Use the heat-protective glove if the attachment is hot.

Upgraded for Perfection!

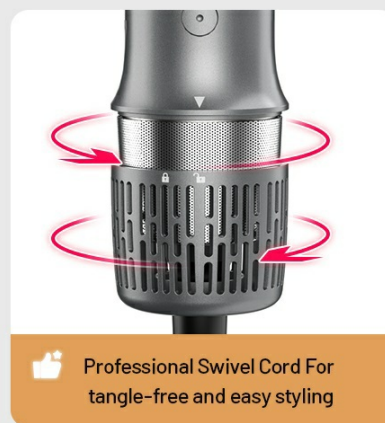
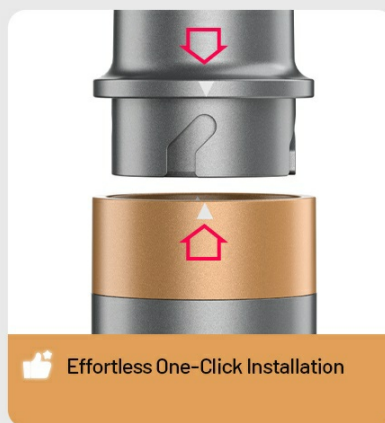


Image: A visual guide demonstrating the simple push-and-click mechanism for attaching and detaching the styling heads from the main unit.

5. OPERATING INSTRUCTIONS

Before styling, ensure your hair is towel-dried until it is damp, not dripping wet. For best results with volumizing and curling brushes, hair should be approximately 70% dry.

General Operation

1. **Power On/Off:** Use the main power switch on the handle to turn the appliance on or off.
2. **Adjust Airflow:** Select your desired airflow speed (Low, Medium, High) using the dedicated switch.
3. **Adjust Temperature:** Choose from 3 heat settings (120°F, 150°F, 190°F) to suit your hair type and styling needs.
4. **Cool Shot Function:** Press and hold the cool air button for 10 seconds after styling a section to set the curl or style and enhance shine.



Image: The main styler unit displaying its controls for adjusting wind speed, temperature, and activating the one-button cold wind function.

Using the Attachments

5.1. Fast Drying Hair Blow Dryer Nozzle

Use this nozzle to quickly remove excess water from your hair before styling with other attachments. Direct the airflow evenly over your hair until it is damp.

Faster Drying. High Speed

Save time and minimize heat damage

Brushless Motor
110,000 RPM

Airflow
23m/s



~30S
Short Hair

~2M 30S
Medium Hair

~4M
Long Hair

Image: A woman using the fast drying hair blow dryer nozzle to quickly dry her hair, demonstrating the high-speed airflow.

5.2. Large Volumizing Brush

For maximum volume, use this brush on hair that is about 70% dry. Section your hair and place the brush at the roots. Gently lift and rotate the brush as you move it down the hair shaft. This technique helps create lift and adds significant volume.

Tangle-Free Volumized Hair

Use the Large Round Volumizing Brush at the roots to create volume



Image: A woman demonstrating the use of the large volumizing brush to add lift and volume to her hair, showing the brush at the roots and mid-shaft.

5.3. Round Brush for Loose Curls

To achieve loose curls or style bangs, use this brush on damp hair. Wrap sections of hair around the brush, holding for a few seconds, then release. The dual bristles help to smooth and defrizz while adding a gentle curl.

Create Loose Curls & Volumize

Frizz Reducing Curling Brush great for loose curls, volumizing and bangs.

It leaves your hair smooth, free from frizz, and full-of-bounce.



Image: A woman styling her hair with the round brush to create loose, bouncy curls, highlighting the brush's ability to add volume and shape.

5.4. Straightening Brush

For a sleek, straight look, use the straightening brush on damp or dry hair. Section your hair and slowly glide the brush from roots to ends. The brush is designed to minimize frizz and provide a smooth finish.

Best Christmas for Her



Image: A woman using the straightening brush to achieve a smooth and straight hairstyle, demonstrating its effectiveness in reducing frizz.

5.5. 1.25" Auto-Wrap Air Curlers

These curlers utilize directional airflow to wrap hair automatically. Use the left barrel for curls on the left side of your head and the right barrel for curls on the right side. Ensure your hair is damp for optimal results.

1. Take a section of hair and hold it near the barrel.
2. The air will automatically wrap the hair around the barrel.
3. Hold for a few seconds to allow the curl to form.

4. Press the cool shot button for 10 seconds to set the curl.
5. Release the hair gently.

No Heat Damage

2 x 1.25" Auto-Wrap Right & Left Curling Irons

Simply place a section of hair ends near the barrel, it wraps, curls automatically.
Last Press and hold the cool air button to set the curl and enhance shine.



Image: A woman demonstrating the auto-wrap air curler, showing how hair is automatically drawn and curled around the barrel for bouncy results.

6. MAINTENANCE

Proper maintenance ensures the longevity and optimal performance of your HITTIONA F2 Hot Air Styler.

- **Cleaning:** Ensure the appliance is unplugged and completely cool before cleaning. Wipe the main unit and attachments with a soft, damp cloth. Do not use abrasive cleaners or immerse the unit in water.
- **Filter Cleaning:** Regularly check and clean the air inlet filter at the bottom of the main unit to prevent blockages and maintain airflow.
- **Storage:** Store the styler and its attachments in the provided travel/storage bag in a cool, dry place.

7. TROUBLESHOOTING

If you encounter any issues with your HITTIONA F2 Hot Air Styler, please refer to the following common problems and solutions:

Problem	Possible Cause	Solution
Appliance does not turn on.	Not plugged in correctly; power switch off; power outlet malfunction.	Check power connection; ensure power switch is ON; try a different outlet.
Attachments do not secure properly.	Attachment not aligned or pushed in completely; release button not fully disengaged.	Ensure attachment is aligned and pushed until it clicks; check if release button is stuck.
Weak airflow or overheating.	Air inlet filter is blocked; internal components overheating.	Clean the air inlet filter; unplug and allow the unit to cool down before restarting.
Hair not curling or styling effectively.	Hair is too wet or too dry; incorrect attachment used; insufficient heat/airflow setting.	Ensure hair is damp (approx. 70% dry for brushes/curlers); select appropriate attachment and settings.

8. SPECIFICATIONS

Feature	Detail
Model Number	F2
Brand	HITTIONA
Wattage	1500 watts
Voltage	120 Volts
Motor Speed	110,000 RPM
Airflow Speed	23m/s
Heat Settings	3 (120°F, 150°F, 190°F)
Airflow Speeds	3
Special Features	Cool Shot Button, Negative Ion Technology
Hair Type Compatibility	All

Feature	Detail
Material Type	Ceramic Tourmaline Coating
Product Dimensions	14 x 4 x 2 inches
Item Weight	1.5 Kilograms (3.31 Pounds)

9. WARRANTY AND SUPPORT

The HITTIONA F2 Hot Air Styler comes with an 18-month warranty from the date of purchase, covering manufacturing defects. For warranty claims, technical support, or any product-related inquiries, please contact HITTIONA customer service.

Customer Service: Refer to the contact information provided on the product packaging or the official HITTIONA website for the most up-to-date support details.