

## PECSU G4S

# PECSU G4S Android 14 MP3 Player User Manual

Model: G4S

## 1. INTRODUCTION

The PECSU G4S MP3 Player is a versatile portable music and media device running on the Android 14 operating system. It features a 4-inch touch screen, extensive storage, and connectivity options, designed for a rich multimedia experience with robust parental controls.

# Android 14

The latest Android 14 system with



**Octa-core processor**  
Smooth multitasking



**Dual-band Wi-Fi**  
Stable and fast connection



**Bluetooth 5.0**  
Easy to pair & support file transfer



Figure 1: PECSU G4S MP3 Player with Android 14 interface.

## 2. PACKAGE CONTENTS

Ensure all items listed below are present in your product box:

- MP3 Player (PECSU G4S) x 1
- 64GB Micro SD Card x 1 (pre-installed or separate)
- Silicone Case x 1
- USB-C Data Cable x 1
- Wired Headphones x 1
- User Manual x 1

## 3. INITIAL SETUP

### 3.1. Powering On/Off

- **To Power On:** Press and hold the Power button (located on the side) until the PECSU logo appears on

the screen.

- **To Power Off:** Press and hold the Power button until the power-off options appear. Select 'Power Off'.
- **To Restart:** Press and hold the Power button until the power-off options appear. Select 'Restart'.

### 3.2. Inserting the MicroSD Card

The device comes with a 64GB Micro SD card. If not pre-installed, locate the Micro SD card slot on the side of the device. Gently insert the card with the gold contacts facing down until it clicks into place. The device supports expansion up to 1TB.



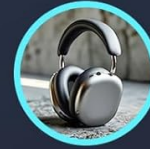
Figure 2: Inserting the MicroSD card.

### 3.3. Charging the Device

Connect the USB-C data cable to the charging port at the bottom of the device and the other end to a USB power adapter (not included) or a computer. The battery indicator on the screen will show charging status. A full charge provides extended playback time.

# Bluetooth 5.0

Perfectly for earbuds, speakers and car system



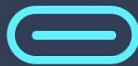
Headphone



Speaker



Car Audio



Charging port



3.5mm headphone jack



Speaker

Independent charging port & headphone port,  
Listen to music seamlessly during charging.

Figure 3: USB-C charging port and 3.5mm headphone jack.

## 4. OPERATING YOUR DEVICE

### 4.1. Navigating the Interface

The PECSU G4S features a responsive 4-inch IPS touch screen. Swipe left or right to navigate between app pages. Tap on an app icon to open it. Use the navigation buttons at the bottom of the screen (Back, Home, Recent Apps) for easy control.

### 4.2. Music Playback

The device supports various audio formats including MP3, WMA, AAC, WAV, APE, FLAC, and OGG. You can use pre-installed music apps like Spotify, Amazon Music, or the default music player. The device also supports equalizer settings, various playback modes (loop, shuffle, sequential), and variable speed playback.



# Sleek 4-inch Eye-care Flat Display

Compact & Portable Design

## IPS Flat Display



## Faster Response



## Power Saving



## One-tap Eye Protection Mode

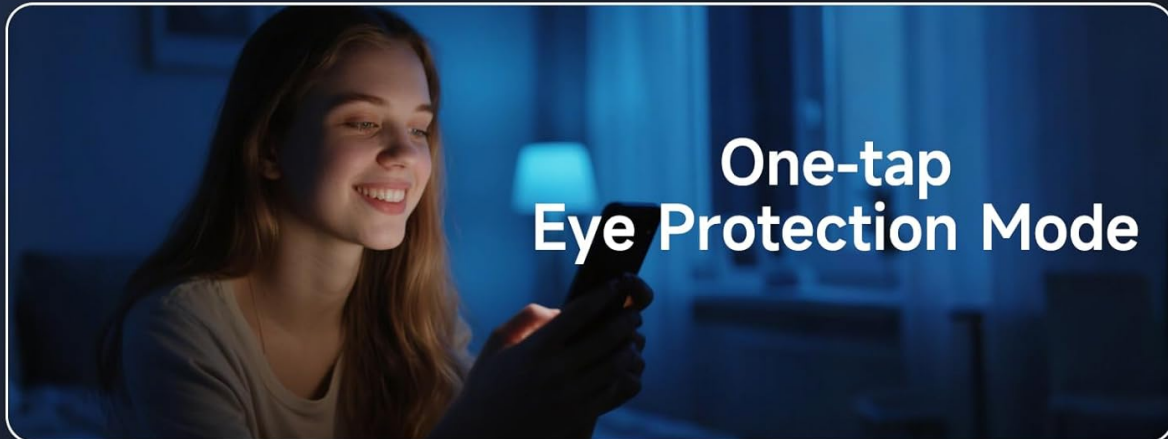


Figure 4: Music playback interface with equalizer and mode options.

### Transferring Music Files

To transfer music files from your computer to the PECSU G4S, connect the device using the provided USB-C cable. The device will appear as a removable storage drive on your computer. You can then drag and drop your music files into the 'Music' folder or a custom folder on the device's internal storage or SD card.

Video 1: Demonstrates how to transfer music files from a computer to the PECSU G4S for offline playback.

### 4.3. Video Playback

The device supports video playback for formats such as RM, AVI, RMVB, FLV, MP4, MKV, MPG, and MOV. Use a compatible video player app to enjoy your videos on the 4-inch screen.

### 4.4. Wi-Fi and Bluetooth Connectivity

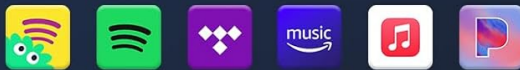
The PECSU G4S supports dual-band Wi-Fi (5GHz & 2.4GHz) for stable internet connection and Bluetooth 5.0 for wireless audio. To connect to Wi-Fi or pair Bluetooth devices, go to **Settings > Network & internet** or **Settings > Connected devices**.

# Google Play Apps at Your Fingertips

🔒 Uninstall & disable

⬇️ Download & update

## Music Time with Hifi Audio



## Listening books



## Pre-installed app



Figure 5: Bluetooth 5.0 connectivity options.

## 4.5. Parental Controls

Utilize the unique 'Parental Management' function to control app access. This feature allows you to enable or disable specific applications, including the Google Play Store, using a parent password. This ensures a safe and controlled environment for younger users.

# Large Storage up to 1TB

RAM  
**3 GB**

ROM  
**32 GB**

TF Card in package  
**64 GB**

SD slot up to  
**1 TB**

## Audio format support:

MP3、WMA、AAC、WAV  
APE、FLAC、OGG、WAV,etc

## Video format support:

RM、AVI、RMVB、FLV、MP4  
MKV、MPG、MOV,etc



Figure 6: Parental Management interface.

## 4.6. Eye-Care Mode

The 4-inch IPS touch screen supports an eye-care mode and night-light function to reduce eye strain during prolonged use. Activate this mode through the device settings for a more comfortable viewing experience.

Customize your unique player

**Support Uninstalling & Disabling Pre-installed APPs**

Support downloading & Updating popular APPs

### •Dual-Band WiFi Fixed MAC Address

Each player has an unique fixed MAC address, so goodbye to MAC address randomization.

### •Bluetooth 5.0

It can easily pair with headphones, speakers, or car audio systems.





## 4.7. Voice Recording & FM Radio

The device includes a pre-installed voice recording function for capturing audio. For FM Radio, you can use the pre-installed 'FM Radio' app (requires wired headphones as an antenna) or download apps like iHeartRadio and TuneIn Radio from the Google Play Store.

## 5. MAINTENANCE

To ensure the longevity and optimal performance of your PECSU G4S MP3 Player, follow these maintenance guidelines:

- **Cleaning:** Use a soft, dry, lint-free cloth to clean the screen and body of the device. Avoid using harsh chemicals or abrasive materials.
- **Storage:** Store the device in a cool, dry place away from direct sunlight, extreme temperatures, and humidity.
- **Battery Care:** Avoid fully discharging the battery frequently. For long-term storage, charge the device to about 50% and power it off.
- **Protection:** Use the included silicone case to protect the device from scratches and minor impacts.

## 6. TROUBLESHOOTING

If you encounter any issues with your PECSU G4S MP3 Player, refer to the following common troubleshooting steps:

- **Device Not Responding:** If the device freezes or becomes unresponsive, perform a soft reset by pressing and holding the Power button for approximately 10 seconds until the device restarts.
- **Cannot Connect to Wi-Fi/Bluetooth:** Ensure Wi-Fi or Bluetooth is enabled in Settings. Try restarting the device and your router/Bluetooth accessory.
- **Music/Videos Not Playing:** Verify that the media files are in a supported format and are stored in the correct folders. Ensure the volume is not muted or too low.
- **Battery Drains Quickly:** Reduce screen brightness, close unused apps, and disable Wi-Fi/Bluetooth when not in use. Check for any background apps consuming excessive power.
- **Apps Not Working:** Ensure apps are updated to their latest versions. Clear the app's cache or data in Settings > Apps. If an app is disabled via Parental Management, re-enable it.
- **Factory Reset:** As a last resort, if persistent issues occur, you can perform a factory reset via **Settings > System > Reset options > Erase all data (factory reset)**. *Note: This will erase all data on the device. Back up important files before proceeding.*

## 7. SPECIFICATIONS

Feature	Detail
Model	G4S
Operating System	Android 14
Screen Size	4 Inches IPS Touch Screen
Processor	Octa-core



RAM	3GB
Internal Storage (ROM)	32GB
Included SD Card	64GB
Expandable Storage	Up to 1TB via Micro SD card slot
Connectivity	Dual-Band Wi-Fi (5GHz & 2.4GHz), Bluetooth 5.0, USB-C
Special Features	Parental Controls, Eye-Care Mode, Voice Recording, FM Radio, Built-In Speaker, Equalizer
Dimensions	0.39 x 2.4 x 4.25 inches
Item Weight	5.3 ounces

## 8. WARRANTY AND SUPPORT

The PECSU G4S MP3 Player comes with a manufacturer's warranty. For any unexpected issues, warranty-related inquiries, or technical support, please contact the PECSU support team. They are available 24/7 to assist you.

For further assistance, please refer to the contact information provided in your product packaging or visit the official PECSU website.