

## Blackview Wave 9C

# Blackview Wave 9C Smartphone User Manual

Model: Wave 9C | Brand: Blackview

## 1. INTRODUCTION

This manual provides comprehensive instructions for the Blackview Wave 9C smartphone. Please read this guide thoroughly to ensure proper setup, operation, and maintenance of your device. Keep this manual for future reference.

## 2. WHAT'S IN THE BOX

Verify that all items are present in your product package:

- 1 x Blackview Wave 9C Smartphone
- 1 x Rotating Phone Case with Stand
- 1 x 32GB TF Card
- 1 x SIM Ejection Pin
- 1 x USB Type-C Cable
- 1 x Power Adapter



Image: Contents of the Blackview Wave 9C package, including the smartphone, protective case, memory card, and charging accessories.

### 3. DEVICE LAYOUT AND CONTROLS

Familiarize yourself with the physical components of your Blackview Wave 9C.



Image: Diagram illustrating the location of the main camera, front camera, SIM/TF card slot, power button/fingerprint sensor, volume buttons, 3.5mm headphone jack, USB Type-C port, and speaker on the Blackview Wave 9C.

- **Power Button / Fingerprint Sensor:** Located on the side, used to power on/off the device and for fingerprint authentication.
- **Volume Buttons:** Adjust media and call volume.
- **SIM / TF Card Slot:** Insert your Nano-SIM cards and the provided TF card for expanded storage.
- **USB Type-C Port:** For charging and data transfer.

- **3.5mm Headphone Jack:** Connect wired headphones.
- **Cameras:** 13MP rear camera and 8MP front camera.

## 4. SETUP

---

### 4.1. Inserting SIM and TF Cards

The Blackview Wave 9C supports dual SIM 4G and a TF card for storage expansion.

1. Locate the SIM card tray on the side of the device.
2. Insert the SIM ejection pin into the small hole next to the tray and press gently until the tray pops out.
3. Place your Nano-SIM cards and the 32GB TF card into the designated slots on the tray. Ensure they are correctly oriented.
4. Carefully reinsert the tray into the phone.



Image: Close-up of the Blackview Wave 9C's card tray, illustrating the three slots for two SIM cards and one TF (microSD) card.

### 4.2. Initial Power On and Setup

1. Press and hold the Power button until the Blackview logo appears.
2. Follow the on-screen prompts to select your language, connect to Wi-Fi, and set up your Google account.
3. Configure security settings, including PIN, pattern, or fingerprint unlock. The device also supports face unlock.



Image: A user demonstrating the face unlock feature on the Blackview Wave 9C smartphone.

## 5. OPERATING THE DEVICE

---

### 5.1. Display and User Interface

The Blackview Wave 9C features a 6.56-inch HD+ display running DokeOS 4.2, based on Android 15. This provides a fluid and intuitive user experience.

- **Screen Size:** 6.56 inches with a 94.94% screen-to-body ratio.
- **Resolution:** 720x1612 pixels.

- **Eye Protection Modes:** Three modes are available to reduce eye strain during prolonged use.



Image: Visual representation of the Blackview Wave 9C's 6.56-inch HD+ display, highlighting its resolution, screen-to-body ratio, and various viewing modes like Reading Mode and Dark Mode.

## 5.2. Performance and Storage

The device is powered by an Unisoc T603 octa-core processor, ensuring smooth operation for daily tasks and applications.

- **Processor:** Unisoc T603 Octa-core.
- **RAM:** 12GB (4GB physical + 8GB virtual expansion).
- **Internal Storage:** 64GB, expandable up to 2TB via TF card.



Image: Diagram showcasing the Unisoc T603 octa-core processor and the 12GB RAM (4GB + 8GB expansion) and 64GB ROM with 2TB expansion capability.

## 5.3. Camera Features

Capture moments with the 13MP main camera and 8MP front camera. Various modes are available to enhance your photography.

- **Rear Camera:** 13MP.
- **Front Camera:** 8MP.
- **Shooting Modes:** HDR, Beauty, Portrait, Night Scene, Panorama, Pro Mode, Time Lapse.
- **Video Recording:** Full HD 1080p.

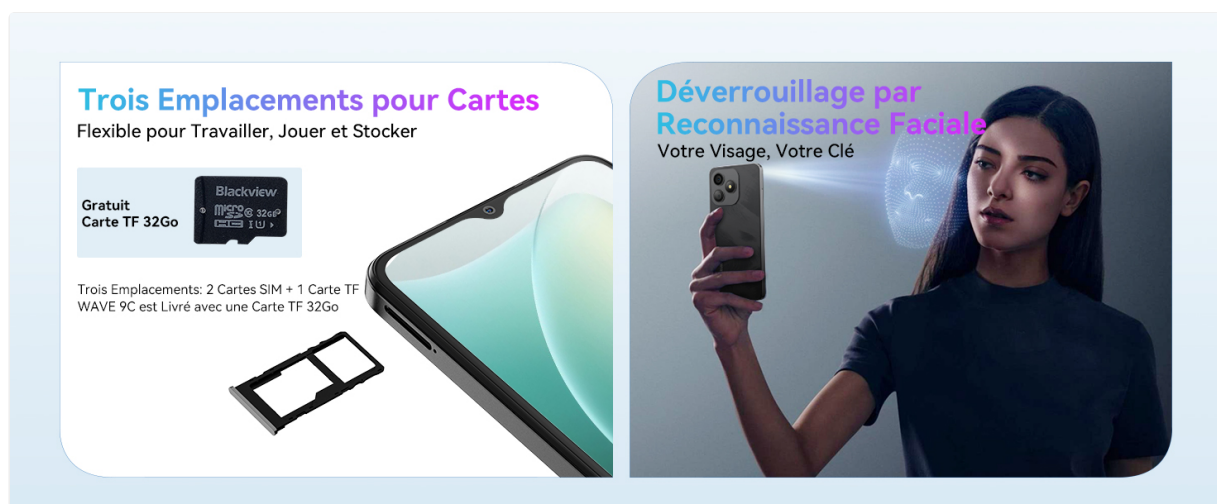


Image: Examples of photos taken with the Blackview Wave 9C camera, demonstrating different modes such as Beauty, Portrait, Night Mode, and Panorama.

## 5.4. AI Features and Applications

The Blackview Wave 9C integrates Doke AI for enhanced user interaction and creative tools.

- **Doke AI:** Enables voice commands and real-time interaction.
- **Hi Doki App:** AI-powered search, Q&A, and content creation.
- **ImageX App:** AI image editing features like object removal, background replacement, and imperfection suppression.
- **VidGen App:** Create videos from text or images.
- **Soundle App:** AI music composition with various styles.
- **Google Lens:** Integrated for translation, recognition, and homework assistance.

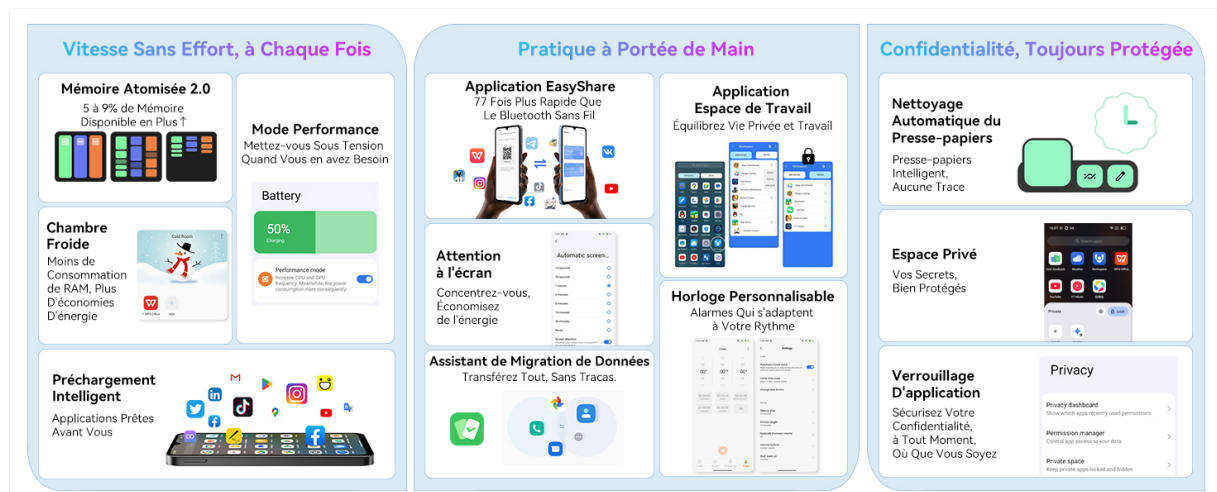


Image: Overview of the Doke AI applications available on the Blackview Wave 9C, including tools for image editing, video creation, and music composition.





Image: Illustration of Google Lens functionalities on the Blackview Wave 9C, such as text translation, object recognition, and assistance with homework by scanning text.

## 5.5. Connectivity and Navigation

- **Dual SIM 4G:** Supports two SIM cards for flexible network usage.
- **GPS:** Integrated GPS, Glonass, and Galileo systems for accurate navigation.
- **Bluetooth:** For wireless connectivity with other devices.

## 6. BATTERY MANAGEMENT

The Blackview Wave 9C is equipped with a 5000mAh battery for extended usage. Optimize battery life using the available modes:

- **Performance Mode:** For maximum speed and responsiveness.
- **Power Saving Mode:** Balances performance and battery life by managing background app activity.
- **Ultra Power Saving Mode:** Restricts functions to essential tasks for minimal power consumption.



Image: Visual explanation of the 5000mAh battery capacity and the three intelligent optimization modes: Performance, Power Saving, and Ultra Power Saving.

## 7. MAINTENANCE

### 7.1. Software Updates

Regularly check for and install software updates to ensure your device has the latest features, security patches, and performance improvements. Navigate to **Settings > System > System update** to check for updates.

### 7.2. Cleaning and Care

- Use a soft, lint-free cloth to clean the screen and body of the phone.

- Avoid using harsh chemicals or abrasive materials.
- The device has an IP54 rating for dust and splash resistance. Avoid submerging it in water.

## 8. TROUBLESHOOTING

Problem	Solution
Device does not power on.	Ensure the battery is charged. Connect the charger and wait a few minutes before attempting to power on again.
Screen is unresponsive.	Perform a forced restart by pressing and holding the Power button for about 10-15 seconds.
Poor network signal.	Check if the SIM card is correctly inserted. Try moving to an area with better network coverage. Restart the device.
Applications are crashing or freezing.	Clear the cache of the problematic app (Settings > Apps > [App Name] > Storage > Clear cache). If the issue persists, uninstall and reinstall the app.
Battery drains quickly.	Adjust screen brightness, close unused background apps, and utilize the Power Saving modes. Check battery usage in settings to identify power-hungry apps.

## 9. SPECIFICATIONS

Feature	Detail
Brand	Blackview
Model Name	Wave 9C
Operating System	Android 15 (DokeOS 4.2)
Screen Size	6.56 Inches
Resolution	720x1612
RAM	12 GB (4GB + 8GB Expansion)
Storage Capacity	64 GB (Expandable up to 2TB)
CPU Speed	550 MHz (Unisoc T603 Octa-core)
Rear Camera	13 MP
Front Camera	8 MP
Battery Type	Lithium-ion
Battery Capacity	5000 mAh

Feature	Detail
Connectivity	Bluetooth, 4G Dual SIM
Special Features	Dual SIM, Mobile Hotspot, Integrated GPS, Expandable Memory, USB OTG
Color	Blue
Product Type	Slate

## 10. WARRANTY AND SUPPORT

Blackview offers comprehensive support for your Wave 9C smartphone:


- **Warranty:** Two-year manufacturer's warranty.
- **Technical Support:** Lifetime technical assistance.
- **Customer Service:** 24/7 customer support.

For any questions or assistance, please contact Blackview support:

**Email:** [support@blackview.hk](mailto:support@blackview.hk)

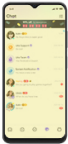
**Phone:** +49 157 3598 0115

**Operating Hours:** Monday - Friday, 9 AM - 5 PM (PST)




### Trois Modes d'affichage


Un Confort Visuel Qui s'adapte à Vos Besoins



**Veilleuse**



**Mode Sombre**  
(Amélioré, Modéré, Doux)



**Mode Lecture**

Image: Blackview customer service contact details, including email, phone number, and operating hours, with an image of support staff.

### Related Documents - Wave 9C

	<p><a href="#">Blackview Rugged Tablet User Manual and Safety Information</a></p> <p>Comprehensive guide for the Blackview Rugged Tablet, covering device overview, setup instructions for SIM cards and hand straps, basic functions, safety precautions, and maintenance tips.</p>
--	--





<http://www.blackwelluk.com>

[Blackview WAVE 8C Series User Manual and Guide](#)

Comprehensive guide for the Blackview WAVE 8C Series smartphone, detailing its features, setup, usage, safety precautions, and maintenance. Learn how to get the most out of your device.



# Blackview BV5300 Plus

## Návod k použití

Google, Android, Google Play e altri nomi di proprietà o marchi registrati di Google LLC.

[Blackview BV5300 Plus User Manual - Setup, Features, and Safety Guide](#)

Comprehensive user manual for the Blackview BV5300 Plus smartphone. This guide covers initial setup, device controls, inserting SIM cards, making calls, sending messages, important safety instructions, and proper disposal of the device and battery. Includes manufacturer and importer details.



# Blackview XPLORE 1

Google, Android, Google Play e tutti i nomi sono marchi registrati Google LLC.

[Blackview XPLORE 1 User Manual and Safety Guide](#)

Comprehensive user manual and safety guide for the Blackview XPLORE 1 smartphone. Includes setup instructions, device controls, calling, messaging, charging information, and important safety warnings.



<http://www.fda.gov/oc>

## Blackview WAVE 8 Series User Manual and Safety Guide

Comprehensive user manual for the Blackview WAVE 8 Series smartphone. Covers setup, operation, safety, maintenance, and regulatory compliance (FCC, IC, SAR). Includes multilingual support information.



[Downloaded from ascelibrary.org by University of California, San Diego on 06/07/14](#)

[Blackview WAVE 9C Series Smartphone User Manual and Safety Information](#)

A comprehensive guide for the Blackview WAVE 9C Series smartphone, detailing setup, basic operations, safety precautions, maintenance, and regulatory compliance information.

