

Manuals+

[Q & A](#) | [Deep Search](#) | [Upload](#)

manuals.plus /

› [Pounur](#) /

› [Pounur Smart Watch KW281A User Manual: Bluetooth Call, 2.01" AMOLED Display, Fitness & Health Tracking](#)

Pounur KW281A

Pounur Smart Watch KW281A User Manual

Model: KW281A

1. INTRODUCTION

Thank you for choosing the Pounur Smart Watch KW281A. This device is designed to enhance your daily life with features such as Bluetooth calling, a vibrant 2.01-inch AMOLED curved display, comprehensive fitness tracking, and health monitoring capabilities. This manual provides detailed instructions for setup, operation, and maintenance to ensure optimal performance and user experience.



Image 1.1: Pounur Smart Watch KW281A, featuring a black strap and a large, clear display.

2. WHAT'S IN THE BOX

- Pounur Smart Watch (KW281A)
- Instruction Manual
- Magnetic Charging Cable
- Packaging Box

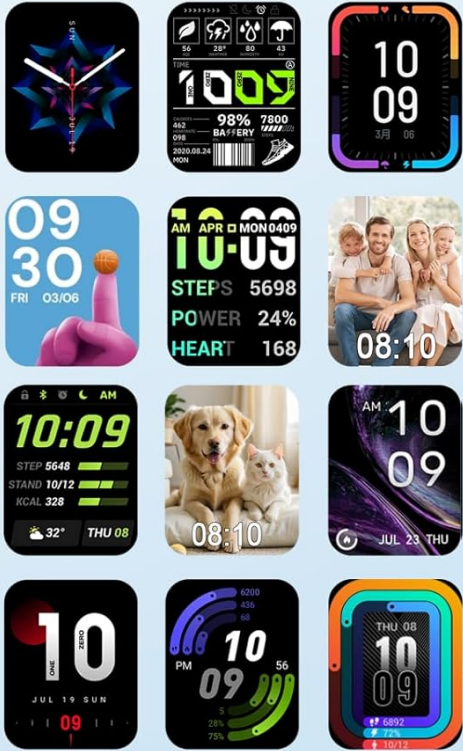
3. PRODUCT OVERVIEW

The Pounur Smart Watch KW281A features a 2.01-inch HD curved AMOLED screen, offering a resolution of

410*502 for clear visuals. It includes a side button and a rotating crown for navigation. The watch is equipped with a comfortable silicone strap and a magnetic charging port on the back.

2.01" HD Curved Screen

100+ Built-in Watch Faces in Da Fit APP



HD Display Broad color range IPS Wide vision

Image 3.1: Close-up of the smartwatch display, highlighting the 2.01-inch HD curved screen and various watch face options.

100+ Wallpapers

There are more than 100 personalized watch faces for you to choose from, or you can customize a unique watch face with your favorite photos



Personalized Watch Faces



100+ Dials in 'Fitcloudpro' APP

4. SETUP GUIDE

4.1 Charging the Smart Watch

Before initial use, fully charge your smartwatch. Connect the magnetic charging cable to the charging contacts on the back of the watch and plug the USB end into a power adapter (not included) or a computer USB port. A full charge typically takes approximately 2 hours. The watch has a 350mAh battery, providing 5-7 days of active use and up to 30 days on standby.

110+ Sports Modes

Calories Steps Heart rate

Activity
699 Steps
11-09-2025, Thu

1200 m 369 kcal

Heart rate 120 bpm
Calories 200 kcal
Steps 2038 steps

Image 4.1: Illustration of the magnetic charging process and battery life indicators: 15 days standby, 4-5 days battery life, 2 hours charging time.

4.2 App Installation (Da Fit)

To unlock the full potential of your smartwatch, download and install the 'Da Fit' application on your smartphone. The app is compatible with iOS 9.0+ and Android 5.0+ devices.

1. Scan the QR code provided in the watch's interface or the quick start guide, or search for 'Da Fit' in your

phone's app store (App Store for iOS, Google Play Store for Android).

2. Alternatively, you can download the app directly from <http://plus.crrepa.com/app-download/dafit>.
3. Follow the on-screen instructions to complete the installation.

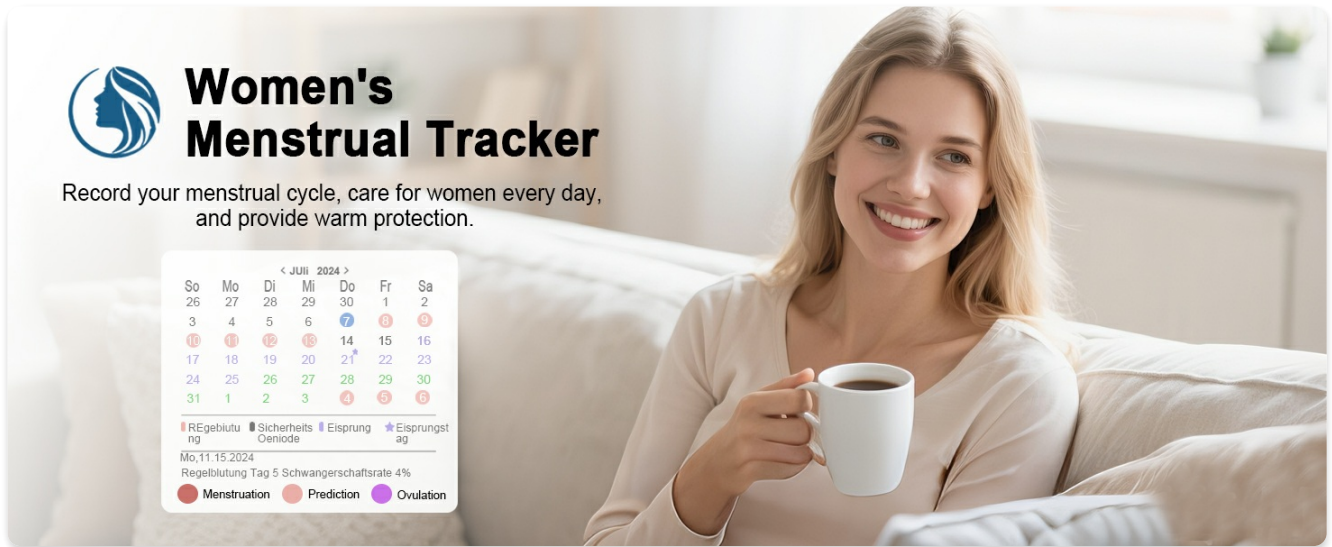


Image 4.2: Visual guide for installing the Da Fit app and initiating the pairing process with the smartwatch.

4.3 Pairing with Your Smartphone

After installing the Da Fit app, follow these steps to pair your smartwatch:

1. Ensure Bluetooth is enabled on your smartphone.
2. Open the 'Da Fit' app and navigate to the 'Device' section.
3. Tap 'Add Device' and select 'KW281A' from the list of available devices.
4. Confirm the pairing request on both your phone and the watch.
5. Allow the smartwatch to display notifications when prompted.

5. OPERATING INSTRUCTIONS

5.1 Basic Navigation

- **Power On/Off:** Press and hold the side button to power the watch on or off.
- **Wake Screen:** Raise your wrist or press the side button.
- **Swipe Up/Down:** Access quick settings or notifications.
- **Swipe Left/Right:** Navigate through widgets and main functions.
- **Tap:** Select an item or enter a function.
- **Side Button/Crown:** Press to return to the home screen or rotate to scroll through menus.

5.2 Bluetooth Call Functionality

Once paired, the smartwatch supports Bluetooth calls, allowing you to make and receive calls directly from your wrist.

- **Answering Calls:** When a call comes in, tap the green answer icon on the watch screen.
- **Making Calls:** Access the 'Phone' function on the watch to dial numbers or select contacts from your synced list.
- **Call Rejection:** Tap the red hang-up icon to reject an incoming call.

Notification Intelligentes



Image 5.1: A user interacting with the smartwatch to manage calls and notifications, showing icons for call list, phone function, and contacts.

2.01" HD Curved Touch Screen

The exquisite metal bezel greatly enhances the texture of the watch, while the 2.01-inch AMOLED screen brings you an immersive visual experience.


Screen Resolution 410*502


Full Screen Touch


1000 Nits Peak Brightness



Image 5.2: Visual representation of the smartwatch's interface for dialing, receiving, and managing Bluetooth calls.

5.3 Smart Notifications

Receive real-time notifications from various applications directly on your watch. Please note that you cannot reply to messages directly from the watch.

- Ensure notification permissions are granted to the Da Fit app on your smartphone.
- Configure which app notifications you wish to receive through the Da Fit app settings.



Image 5.3: A user viewing various app notifications (Facebook, WhatsApp, Twitter, etc.) on the smartwatch screen.

5.4 Watch Faces

Customize your watch's appearance with over 100 available watch faces through the Da Fit app. You can also personalize watch faces using your own photos.

2.01" HD Curved Screen

100+ Built-in Watch Faces in Da Fit APP

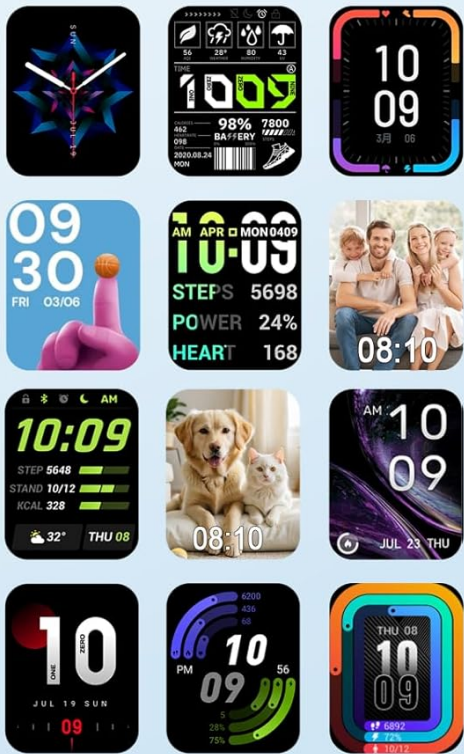


Image 5.4: Display of various watch face designs and options for personalization.

5.5 Multifunctional Features

The smartwatch includes several utility functions:

- **Music Control:** Play, pause, skip tracks on your phone.
- **Camera Control:** Remotely trigger your phone's camera shutter.
- **Alarm Clock:** Set alarms directly from the watch.
- **Timer/Stopwatch:** For various activities.
- **Calculator:** Basic arithmetic functions.
- **Weather Forecast:** View current weather conditions.
- **Find Phone:** Locate your paired smartphone.
- **Sedentary Reminder:** Prompts you to move after periods of inactivity.
- **Water Drinking Reminder:** Helps maintain hydration.

Multifunctional Smartwatch



Image 5.5: Collage showing various smartwatch functions including music control, camera control, alarm clock, timer, and calculator.

6. HEALTH MONITORING

6.1 Heart Rate Monitoring

The smartwatch continuously tracks your heart rate throughout the day. View real-time data on the watch or detailed historical data in the Da Fit app.

24/7 All-Round Health Management



Image 6.1: Visual representation of heart rate monitoring, showing a user wearing the watch during exercise and a graph of heart rate data.

6.2 Blood Oxygen Monitoring (SpO2)

Monitor your blood oxygen levels directly from your wrist. This feature provides insights into your overall respiratory health.

24/7 All-Round Health Management



Image 6.2: Display of blood oxygen percentage on the smartwatch screen, alongside a user engaged in physical activity.

6.3 Sleep Tracking

The watch automatically tracks your sleep patterns, including deep sleep, light sleep, and awake times. Analyze your sleep quality and adjust your schedule for better rest.

24/7 All-Round Health Management



Image 6.3: A user sleeping while wearing the smartwatch, with an overlay showing a graph of sleep stages (deep, light, REM, awake).

6.4 Women's Menstrual Tracker

For female users, the watch offers a menstrual cycle tracking feature to record and predict menstrual periods, ovulation, and fertile windows.

Multi-functional Smart Watch

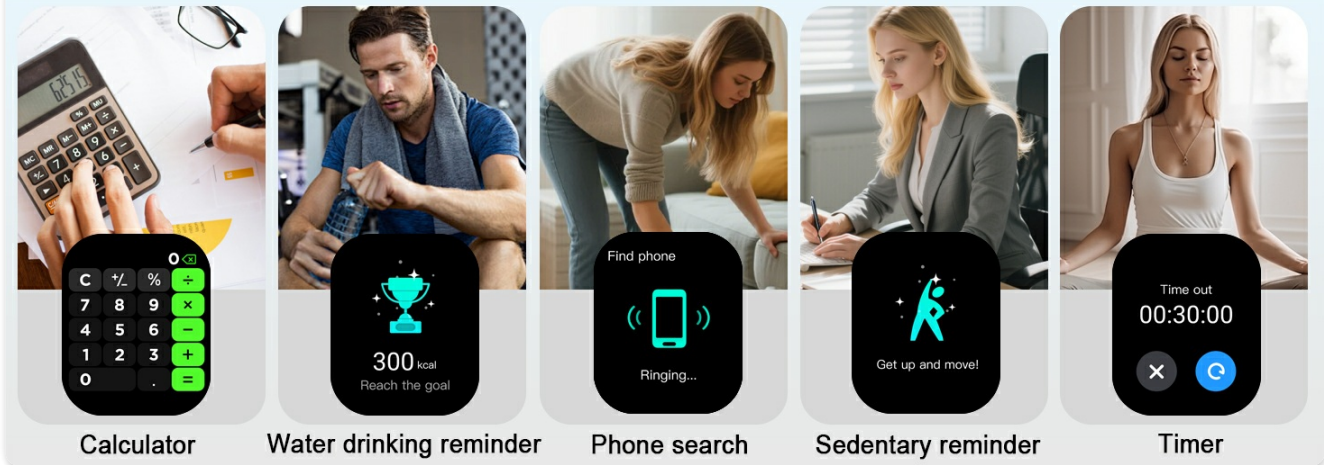


Image 6.4: A woman smiling while holding a cup, with an overlay showing a calendar interface for menstrual cycle tracking.

6.5 Stress Monitoring

Understand your body's response to different stressors with the stress monitoring function, providing insights into your stress levels throughout the day.

Multi-functional Smart Watch

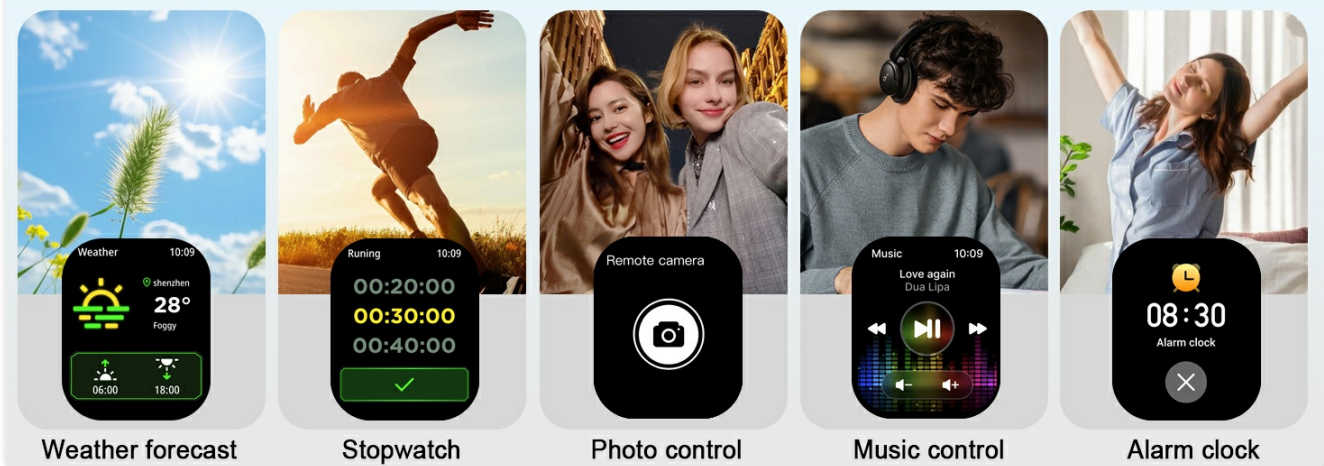


Image 6.5: A man at a desk, with an overlay showing a graph illustrating stress level fluctuations.

7. FITNESS TRACKING

7.1 Sports Modes

The smartwatch offers over 100 sports modes, including walking, running, cycling, swimming, yoga, and more. It accurately records activity data such as steps, distance, calories burned, and active minutes.



IP68 Waterproof

Sweating, Washing hands, Dealing with daily splashes



Rain



Handwashing



Sweat

Magnetic Fast Charging and Long Battery



15 Days
Standby Time



4-5 Days
Battery life



2 Hours
Charging Time



Image 7.1: Icons representing various sports modes, alongside images of individuals engaging in activities like running, climbing, and playing tennis.

Answer/Make Bluetooth calls

The smartwatch has a built-in calling function. Simply connect the smartwatch to your phone via Bluetooth to make and receive calls. You can also set favorite contacts and display call logs.

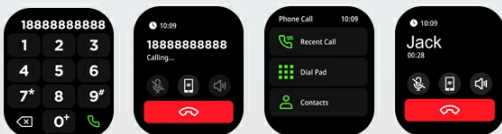


Image 7.2: Illustration of the smartwatch tracking calories, steps, distance, and heart rate during various sports activities.

8. WATER RESISTANCE

The Pounur Smart Watch KW281A is IP68 waterproof, meaning it is resistant to dust and can withstand immersion in water up to 1.5 meters for 30 minutes. It is suitable for daily use, including handwashing, sweating during exercise, and exposure to rain. It can also be worn during swimming and bathing.

Product Size



Image 8.1: The smartwatch submerged in water, demonstrating its IP68 waterproof capability, suitable for rain, handwashing, and sweat.

9. MAINTENANCE

9.1 Cleaning the Watch

- Regularly clean the watch screen and strap with a soft, dry cloth.
- For stubborn dirt, use a slightly damp cloth and then dry thoroughly.
- Avoid using harsh chemicals or abrasive materials, as these can damage the watch.

9.2 Charging and Battery Care

- Use only the provided magnetic charging cable.
- Avoid exposing the watch to extreme temperatures, which can affect battery life.
- Do not attempt to disassemble or replace the battery yourself.

10. TROUBLESHOOTING

If you encounter issues with your Poonur Smart Watch KW281A, please refer to the following common solutions:

Issue	Possible Solution
Watch does not power on	Ensure the watch is fully charged. Press and hold the side button for several seconds.
Unable to pair with phone	Ensure Bluetooth is enabled on your phone. Restart both the watch and phone. Make sure the Da Fit app has necessary permissions. Check if the watch is already paired with another device.
Notifications not received	Verify Bluetooth connection. Check notification settings in the Da Fit app and your phone's system settings. Ensure the app is running in the background.
Inaccurate health/fitness data	Ensure the watch is worn snugly on your wrist. Clean the sensor on the back of the watch. Calibrate settings in the Da Fit app if available. Note that smartwatches are not medical devices.
Short battery life	Reduce screen brightness. Turn off unnecessary features like continuous heart rate monitoring if not needed. Limit frequent screen wake-ups.

If the issue persists, please contact customer support.

11. SPECIFICATIONS

Feature	Detail
Model Number	KW281A
Screen Size	2.01 Inches
Display Type	AMOLED Curved Display
Resolution	410*502
Connectivity	Bluetooth
Water Resistance	IP68
Battery Capacity	350 mAh (approx. 300 Amp Hours listed in specs)
Battery Life	5-7 days (active use), up to 30 days (standby)
Charging Time	Approx. 2 hours
Operating System Compatibility	Android 5.0+ / iOS 9.0+
Item Weight	3.52 ounces
Package Dimensions	7.72 x 6.06 x 1.1 inches

12. WARRANTY AND SUPPORT

For warranty information and customer support, please refer to the documentation included with your purchase or contact the retailer. Keep your purchase receipt as proof of purchase for any warranty claims.

For further assistance, you may visit the official Poonur store on Amazon:[Poonur Store](#).