



Manuals.plus /

› FiveWillowise /

› FiveWillowise Buffet Sideboard Cabinet with Rattan Doors and Drawers (47.2"W) - Instruction Manual

FiveWillowise Buffet Sideboard Cabinet 47.2"W (Natural)

FiveWillowise Buffet Sideboard Cabinet with Rattan Doors and Drawers (47.2"W) - Instruction Manual

Model: Buffet Sideboard Cabinet 47.2"W (Natural)

Brand: FiveWillowise

1. IMPORTANT SAFETY INFORMATION

Please read and understand all safety instructions before assembly and use of this product. Failure to follow these instructions may result in injury or damage.

- Always ensure the cabinet is stable and level before use.
- Do not overload the cabinet as it may tip over.
- Keep the area around the cabinet clear to prevent accidents.
- Use caution when opening and closing doors and drawers to avoid injury.
- This product includes anti-tipping accessories. It is highly recommended to install these to greatly improve the safety of use, especially in households with children or pets.

2. PRODUCT OVERVIEW

The FiveWillowise Buffet Sideboard Cabinet is designed to provide versatile storage and enhance your living space with its unique rattan elements and natural aesthetic. It features a combination of open and closed storage options.



Figure 2.1: The complete FiveWillowise Buffet Sideboard Cabinet. This image displays the complete FiveWillowise Buffet Sideboard Cabinet, highlighting its natural wood finish, two top drawers, four rattan-front doors, and an open bottom shelf. Dimensions are shown as 47.2 inches wide, 14.2 inches deep, and 37.5 inches high, with a weight capacity of 120 lbs on the top surface.

Key Features:

- **Unique Design:** Rattan elements add a natural and rustic atmosphere.
- **Ample Storage Space:** Includes 2 deep drawers, 4 doors, and 1 large open shelf.
- **Multifunctional:** Suitable for dining rooms (coffee bar), kitchens (storage), entryways (console table), or living rooms (TV stand).
- **Reinforced Structure:** Constructed from premium engineered wood with smooth metal rails, ensuring stability and durability. Includes anti-dumping accessories for enhanced safety.

3. ASSEMBLY INSTRUCTIONS

Assembly of this cabinet is designed to be straightforward with each panel labeled and a detailed, step-by-step instruction manual provided. It is recommended to have a clear, spacious area for assembly.

Preparation:

- Unpack all components and verify against the parts list in your manual.

- Ensure all hardware is present.
- Gather necessary tools (e.g., screwdriver, hammer).



Figure 3.1: Cabinet components laid out. This image shows various wooden panels and hardware components of the cabinet laid out on a floor, indicating the start of the assembly process.

Step-by-Step Assembly:

1. **Assemble Drawers:** Begin by constructing the two deep drawers. Attach the sides, front, and back panels, then insert the bottom panel.
2. **Attach Drawer Brackets:** Secure the metal brackets to the sides of the assembled drawers.
3. **Construct Main Frame:** Assemble the main frame of the cabinet by connecting the side panels to the bottom shelf and internal dividers.
4. **Install Top Panel:** Secure the top panel onto the main frame.
5. **Attach Cabinet Magnets:** Install the cabinet magnets for the doors.
6. **Prepare Doors:** Attach hinges and handles to the four rattan-front doors.
7. **Mount Doors:** Carefully mount the doors onto the cabinet frame.
8. **Insert Drawers:** Slide the assembled drawers into their respective slots.
9. **Install Backing Support:** Attach the backing support panels to the rear of the cabinet for added stability.
10. **Secure Anti-Tipping Device:** Follow the instructions in your manual to securely attach the anti-tipping device to the cabinet and a wall.



Figure 3.2: Fully assembled cabinet. This image shows the fully assembled cabinet in a dining room, demonstrating its functional use and aesthetic appeal.

4. OPERATING INSTRUCTIONS

This cabinet offers various storage solutions for your home or office.

Using Drawers:

The two top drawers are designed for smooth operation. Pull the handles gently to open and push to close. Avoid forcing the drawers, especially if they feel stiff, to prevent damage to the glides.



Figure 4.1: Open drawers. This image shows the two top drawers of the cabinet pulled open, revealing ample storage space for various items. The drawers feature smooth-gliding mechanisms.

Using Doors:

The four rattan-front doors open to reveal interior shelving. Use the handles to open and close the doors. Ensure they are fully closed to engage the cabinet magnets and keep contents secure.



Figure 4.2: Open doors. This image shows the four rattan-front doors of the cabinet opened, revealing interior shelving for organized storage of larger items.

Using Open Shelf:

The large open bottom shelf provides additional space for display or storage of frequently accessed items. It is designed to support up to 66 pounds.

Open Bottom Storage Shelf and Sturdy Construction

Provide ample storage and display space and can support up to 66 pounds



Figure 4.3: Open bottom shelf. This image highlights the spacious open bottom shelf of the cabinet, suitable for storing baskets or decorative items.

5. MAINTENANCE

Proper care and maintenance will ensure the longevity and appearance of your FiveWillowise Buffet Sideboard Cabinet.

Cleaning:

- Wipe surfaces with a soft, damp cloth.
- Avoid using harsh chemicals, abrasive cleaners, or polishes that may damage the finish.
- For spills, wipe immediately with a dry cloth to prevent staining.

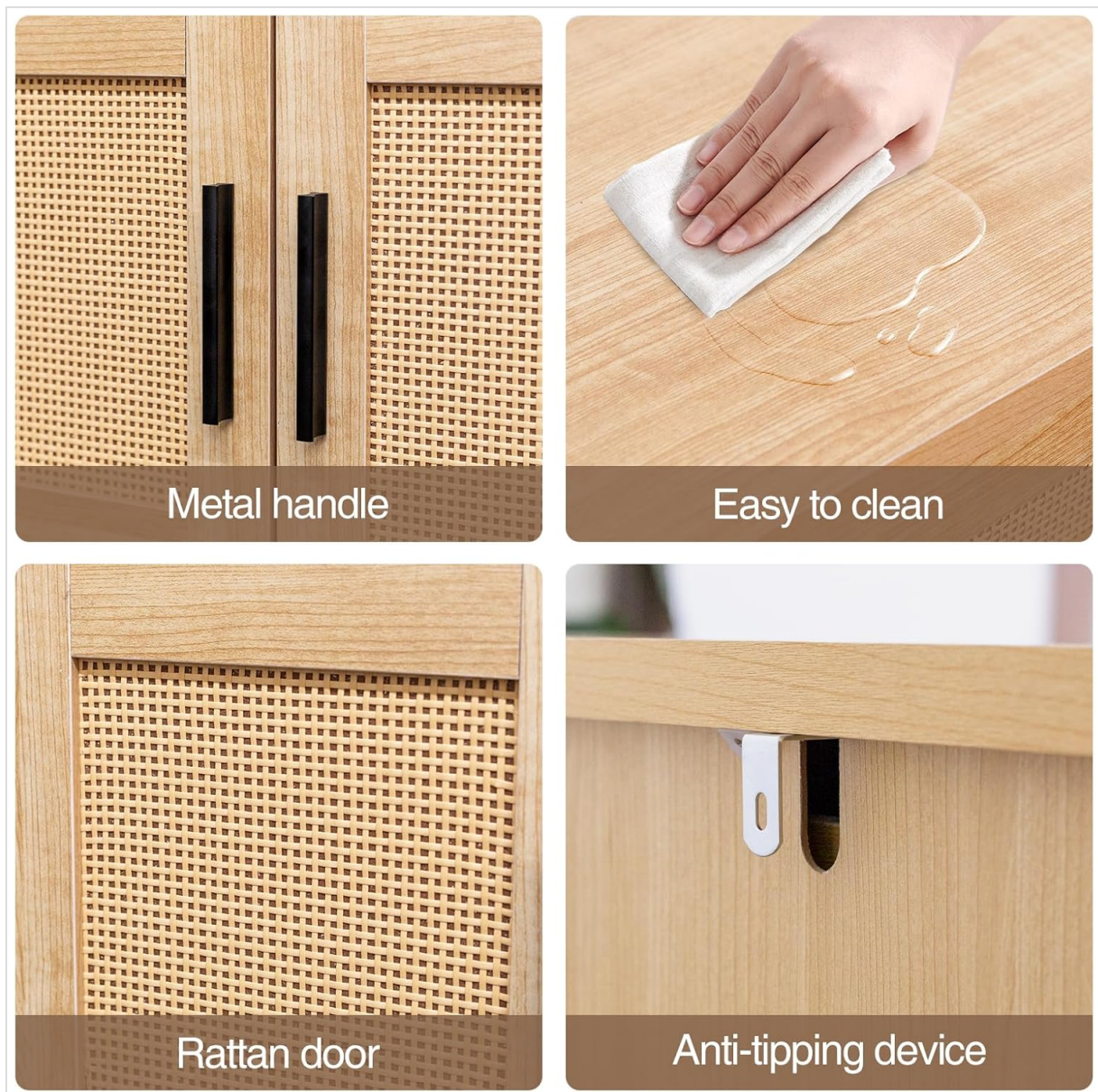


Figure 5.1: Easy to clean surface. This image demonstrates the ease of cleaning the cabinet's surface with a soft cloth, highlighting its smooth, maintainable finish.

General Care:

- Periodically check all screws and fasteners to ensure they are tight. Retighten if necessary.
- Avoid placing hot items directly on the surface; use coasters or protective pads.
- Keep the cabinet away from direct sunlight and excessive moisture to prevent warping or fading.

6. TROUBLESHOOTING

If you encounter any issues with your cabinet, please refer to the following common solutions:

- **Wobbly Cabinet:** Ensure the cabinet is placed on a level surface. Adjust any leveling feet if present. Check all assembly screws and tighten them.
- **Drawers or Doors Not Closing Properly:** Verify that nothing is obstructing the drawer glides or door hinges. Check if the hinges or glides are properly aligned and secured.
- **Missing Parts:** If any parts were missing during assembly, please contact customer support immediately.

7. SPECIFICATIONS

Feature	Detail
Brand	FiveWillowise
Color	Natural
Material	Engineered Wood
Product Dimensions (D x W x H)	14.2"D x 47.2"W x 37.5"H
Number of Drawers	2
Number of Doors	4
Number of Shelves	3 (including the open bottom shelf)
Installation Type	Freestanding
Required Assembly	Yes
Mounting Type	Floor Mount (with anti-tipping device for wall attachment)
Style Name	French Country
Door Style	Rattan
Finish Type	Rustic
Hardware Color	Natural (with black handles)

8. WARRANTY AND SUPPORT

For any questions, concerns, or assistance with your FiveWillowise Buffet Sideboard Cabinet, please do not hesitate to contact our professional after-sales team.

Contact Email: hosoteservice@gmail.com

Please provide your product model number and a detailed description of your inquiry for prompt assistance.