



[Manuals.plus](#) /

> [INGA](#) /

> INGA HKDR631M Computer Speakers with Detachable Microphone User Manual

INGA HKDR631M

INGA HKDR631M Computer Speakers with Detachable Microphone

User Manual

INTRODUCTION

Thank you for choosing the INGA HKDR631M Computer Speakers. This device provides high-quality stereo sound and clear voice communication through its detachable microphone. Designed for versatility, it easily connects to various devices and offers multiple mounting options to optimize your workspace. Please read this manual carefully to ensure proper setup and operation.



Figure 1: INGA HKDR631M Computer Speakers

A black soundbar-style speaker with a detachable microphone attached, positioned on a desk in front of a computer monitor displaying a video conference.

WHAT'S IN THE BOX

- 1 x INGA Computer Speaker
- 1 x Detachable Microphone
- 1 x User Manual
- USB-A to USB-C Adapter (included with the cable)

SETUP INSTRUCTIONS

1. Mounting the Speakers

The INGA HKDR631M speakers offer versatile mounting options. You can use the built-in clip to attach it to your monitor or place it directly on your desk.

- **Clip-On Installation:** The sturdy clip is designed to attach to monitors up to 1 inch (2.54 cm) thick. Gently open the clip and position the speaker on the top edge of your monitor. Ensure it is securely fastened.
- **Desktop Placement:** For monitors with curved backs or if you prefer a desktop setup, the speaker can stand independently on its base.



Figure 2: Multiple Mounting Options

This image illustrates how the speaker can be securely clipped to the top of a monitor (up to 1 inch thick) or placed on a desk using its integrated stand. Note: Not compatible with curved-back monitors for clip-on mounting.

2. Attaching the Detachable Microphone

Locate the detachable microphone. Insert the microphone's connector into the designated port on the speaker unit. Ensure it is firmly connected.



Figure 3: Attaching the Detachable Microphone

A close-up view of the speaker unit, highlighting the port where the flexible, unidirectional microphone is inserted.

3. Connecting to Your Device

The INGA HKDR631M speakers are plug-and-play, requiring no additional drivers. Connect the speaker to your computer or device using the integrated USB cable.

- The speaker comes with a USB-A connector and an included USB-C adapter for broad compatibility.
- Plug the USB connector into an available USB port on your PC, Mac, laptop, or gaming console.
- The device will be automatically recognized, and audio output will be routed through the speakers.

Adapter Included

Comes with USB A/USB C adapter for versatile connections



USB A / USB C



PC



Laptop



Android

System



Linux



Windows



Mac OS



Android

Figure 4: USB Connectivity with Adapters

This image displays the speaker's integrated USB cable with a USB-A connector, alongside a separate USB-C adapter, demonstrating its broad compatibility with different computer ports.

Your browser does not support the video tag.

Video 1: Usage Methods and Effects of the INGA HKDR631M Speaker

This video demonstrates the setup and functionality of the INGA HKDR631M speakers, including connection and basic operation.

OPERATING INSTRUCTIONS

1. Power and Volume Control

The speakers are powered via the USB connection. Once connected, they are ready for use. Volume can be adjusted using the dedicated buttons on the speaker unit or through your device's operating system.

- **Volume Up:** Press the '+' button.

- **Volume Down:** Press the '-' button.

2. Microphone Mute Function

The speaker features a convenient one-touch mute button for the microphone, allowing for instant privacy control.

- **Mute/Unmute Microphone:** Press the microphone mute button (often indicated by a microphone icon with a slash) on the speaker unit. An indicator light may show the microphone's status.

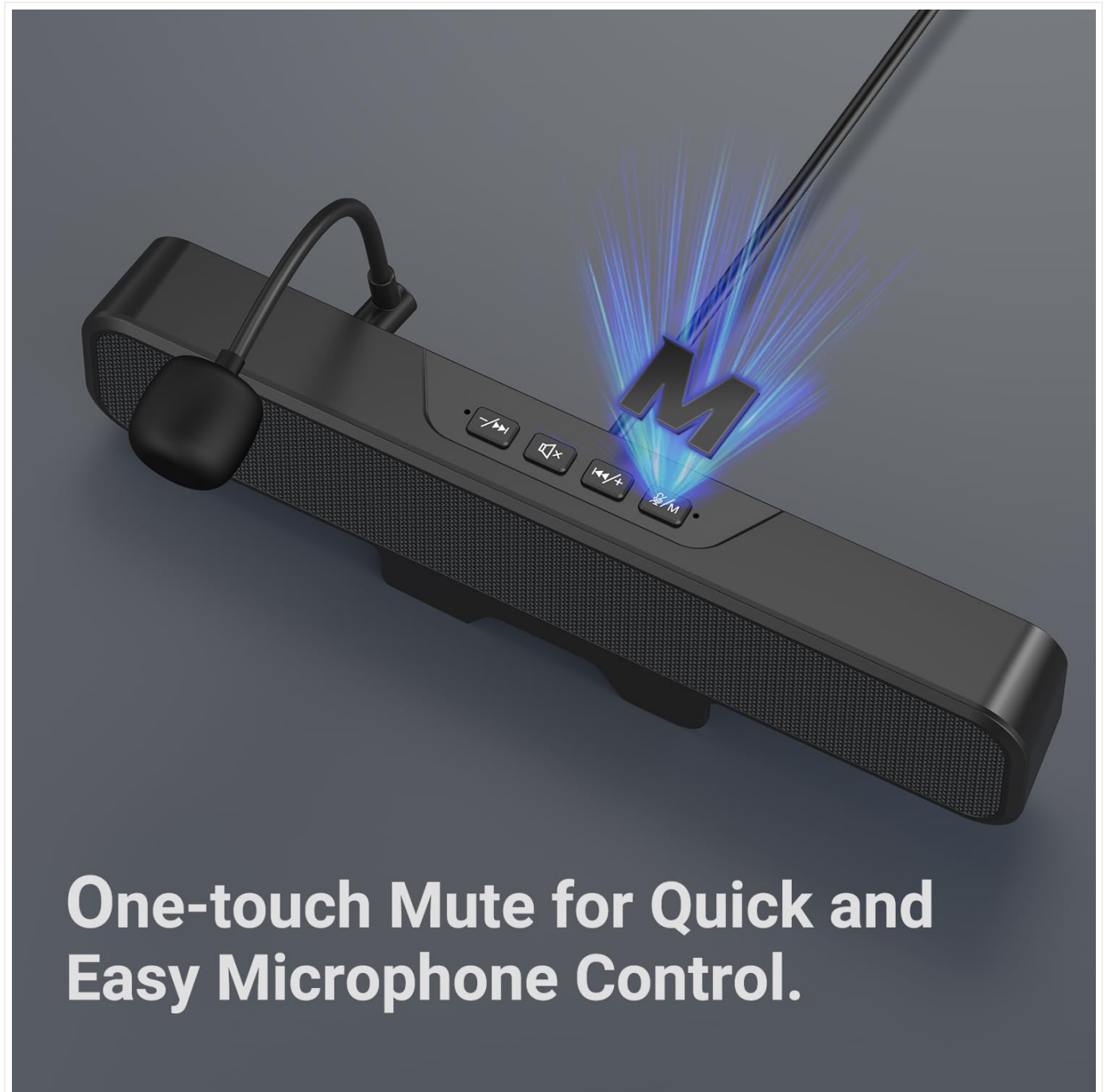


Figure 5: One-Touch Microphone Mute

A top-down view of the speaker, emphasizing the control panel with the microphone mute button, which allows for quick and easy privacy control.

3. Audio Features

Experience immersive stereo sound with enhanced bass, ideal for gaming, meetings, and multimedia consumption.



Figure 6: Immersive Stereo Sound

An internal diagram of the speaker, showing the dual high-performance drivers and a passive bass radiator, which work together to produce rich, clear audio with enhanced bass.

MAINTENANCE

To ensure the longevity and optimal performance of your INGA HKDR631M speakers, follow these maintenance guidelines:

- **Cleaning:** Use a soft, dry cloth to wipe the speaker's surface. Do not use liquid cleaners or abrasive materials.
- **Storage:** When not in use for extended periods, store the speakers in a cool, dry place away from direct sunlight and extreme temperatures.
- **Handling:** Avoid dropping the speakers or subjecting them to strong impacts. Do not attempt to disassemble the unit.

TROUBLESHOOTING

If you encounter issues with your INGA HKDR631M speakers, refer to the following common problems and solutions:

No Sound Output

- **Check USB Connection:** Ensure the USB cable is securely plugged into both the speaker and your device. Try a different USB port.
- **Verify Device Settings:** Confirm that the INGA HKDR631M is selected as the default audio output device in your computer's sound settings.
- **Adjust Volume:** Increase the volume using the speaker's controls and your device's system volume. Ensure the speaker is not muted.
- **Restart Device:** Sometimes, a simple restart of your computer can resolve audio recognition issues.

Microphone Not Working

- **Check Microphone Connection:** Ensure the detachable microphone is fully inserted into its port on the speaker.
- **Check Mute Button:** Press the microphone mute button on the speaker to ensure it is not muted.
- **Verify Device Settings:** In your computer's sound settings, ensure the INGA HKDR631M microphone is selected as the default input device. Check microphone privacy settings in your operating system.

- **Application Settings:** If using a specific application (e.g., Zoom, Discord), check its internal audio settings to ensure the correct microphone is selected.

Poor Sound Quality or Static

- **USB Port Interference:** Try connecting the speaker to a different USB port, preferably a direct port on your computer rather than a hub.
- **Cable Integrity:** Ensure the USB cable is not damaged or kinked.
- **Environmental Factors:** Keep the speakers away from other electronic devices that might cause interference.
- **Software Updates:** Ensure your operating system and audio drivers are up to date.

Speaker Does Not Clip Securely to Monitor

- **Monitor Thickness:** The clip is designed for monitors up to 1 inch thick. Ensure your monitor falls within this specification.
- **Curved Monitors:** The clip-on design is not compatible with monitors that have a curved back. In such cases, use the desktop placement option.

SPECIFICATIONS

Brand	INGA
Model Number	HKDR631M
Speaker Maximum Output Power	10 Watts
Frequency Response	20 KHz
Connectivity Technology	USB
Audio Output Mode	Stereo
Mounting Type	Clip
Enclosure Material	Metal, Plastic
Speaker Type	Monitor
Additional Features	Bass Boost, Clamp Installation, Detachable Microphone, Plug and Play, USB Port
Color	Black
Control Method	Touch
Speaker Size	248 Millimeters
Specific Uses For Product	Desktop multimedia, Communication, Gaming
Number of Audio Channels	2.0
Connectivity Protocol	USB
Power Source	Corded Electric (USB)
Input Voltage	5 Volts (DC)

Item Dimensions (D x W x H)	9"D x 1.85"W x 1.26"H
Compatible Devices	Laptop, MAC, PC, Gaming Consoles
Audio Driver Type	Dynamic Driver

WARRANTY INFORMATION

The INGA HKDR631M Computer Speakers come with a **1-Year Manufacturer Warranty**. This warranty covers parts and labor for defects in materials and workmanship under normal use. Please retain your proof of purchase for warranty claims.

For detailed warranty terms and conditions, please refer to the official INGA website or contact customer support.

CUSTOMER SUPPORT

Should you require assistance, have questions, or need to report an issue, please contact INGA customer service. We are committed to providing excellent support across various channels.

For the most up-to-date contact information, please visit the official INGA website or refer to the contact details provided with your product packaging.

