



Manuals.plus /

› SHERRIVA /

› SHERRIVA WHD-5100 Wireless HDMI Transmitter and Receiver User Manual

SHERRIVA WHD-5100

SHERRIVA WHD-5100 Wireless HDMI Transmitter and Receiver User Manual

Model: WHD-5100

1. PRODUCT OVERVIEW

The SHERRIVA WHD-5100 is a wireless HDMI transmitter and receiver system designed for seamless audio and video streaming. It supports 1080P@60Hz resolution and offers flexible connectivity options for various devices.

What's in the Box

► What's in the Box ◀

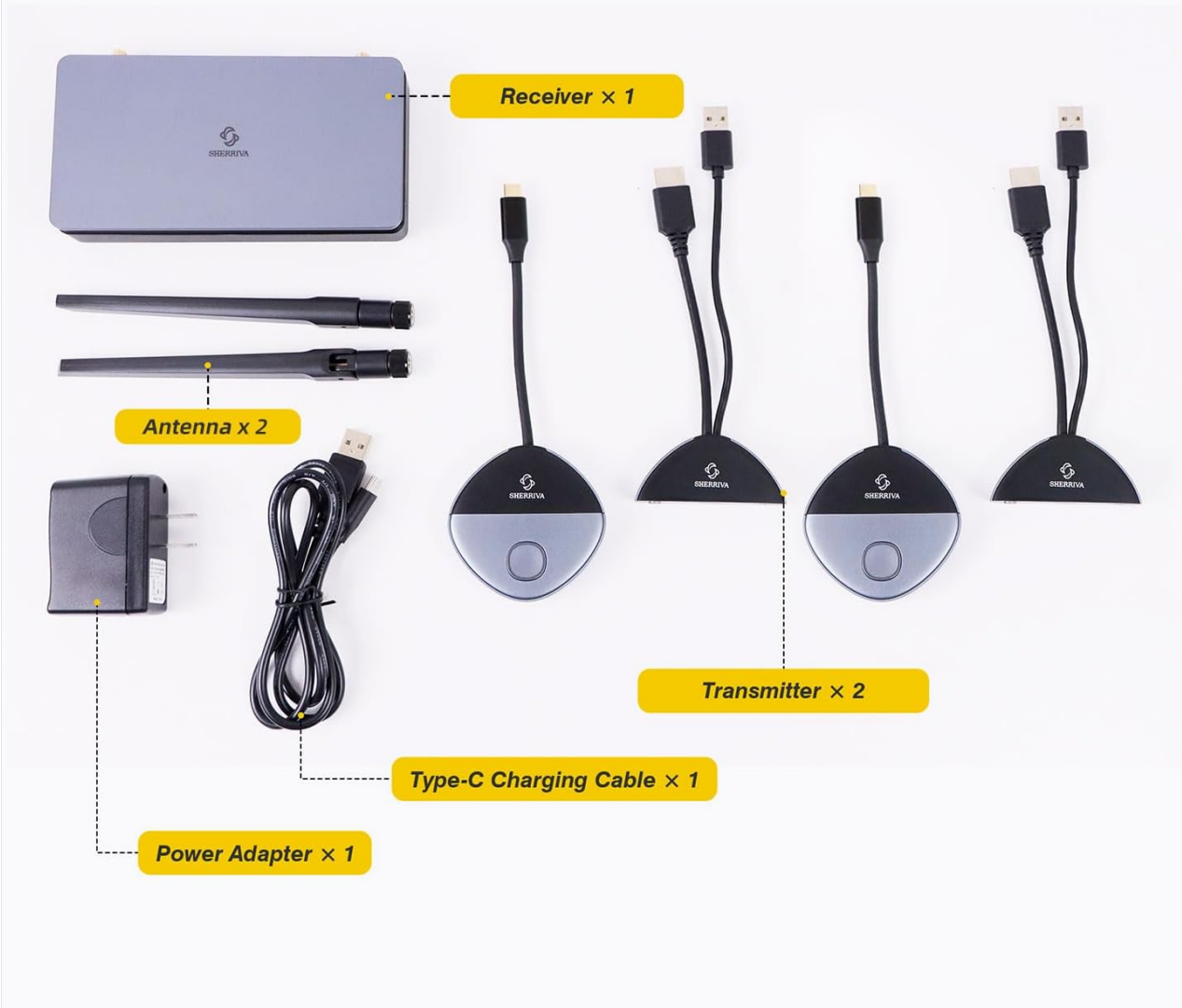


Image: All components included in the SHERRIVA WHD-5100 package.

- 1 x Receiver (RX)
- 2 x Transmitters (TX) (1x USB-C, 1x HDMI)
- 2 x External Antennas
- 1 x Type-C Charging Cable
- 1 x Power Adapter

Key Features

- **Dual Input:** Supports both USB-C and HDMI input for versatile device compatibility.
- **Extended Range:** Up to 328 feet (100 meters) wireless transmission.
- **Plug & Play:** No Wi-Fi, apps, or drivers required for basic operation.
- **Multi-Transmitter Support:** Connect up to 32 transmitters to one receiver (additional transmitters sold separately).
- **Magnetic Mount:** Receiver features a built-in magnetic base for secure placement.
- **Audio Output:** 3.5mm audio jack for separate audio output.
- **HDMI Backup:** Wired HDMI backup port for continuous connection.
- **Automatic Reboot:** Daily auto-reboot feature to maintain stable performance.

2. SETUP INSTRUCTIONS

2.1 Basic Connection

1. Connect the Receiver (RX):

Connect the receiver to your display's HDMI port and provide power using the Type-C charging cable and power adapter. Ensure the external antennas are securely attached to the receiver.

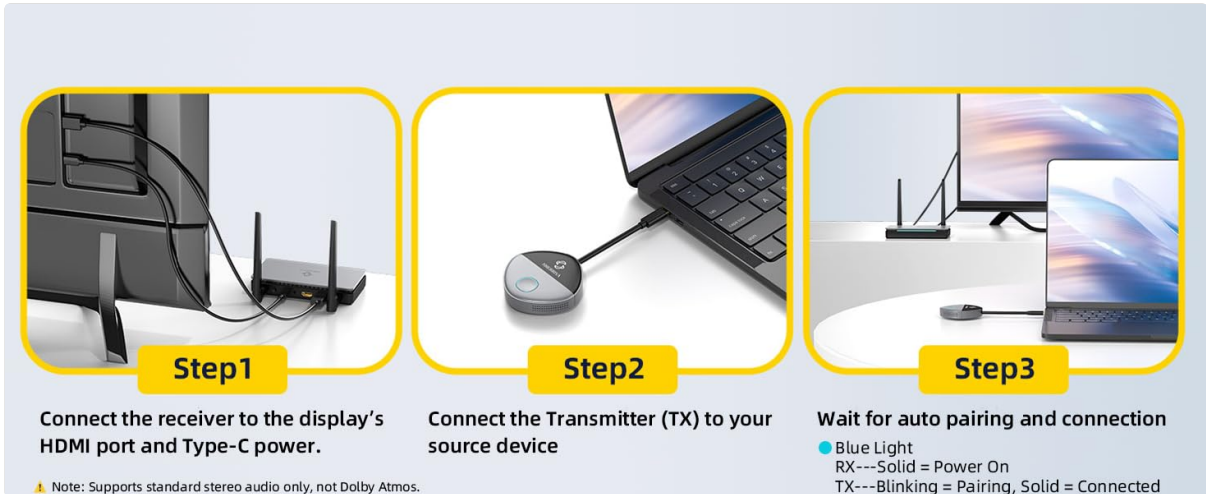


Image: Diagram showing the receiver connected to a display's HDMI port and powered via USB-C.

2. Connect the Transmitter (TX):

Connect the transmitter to your source device (e.g., laptop, smartphone, tablet). If using a USB-C transmitter, ensure your device's USB-C port supports video output (DP Alt Mode). For HDMI transmitters, connect to the HDMI output of your device.

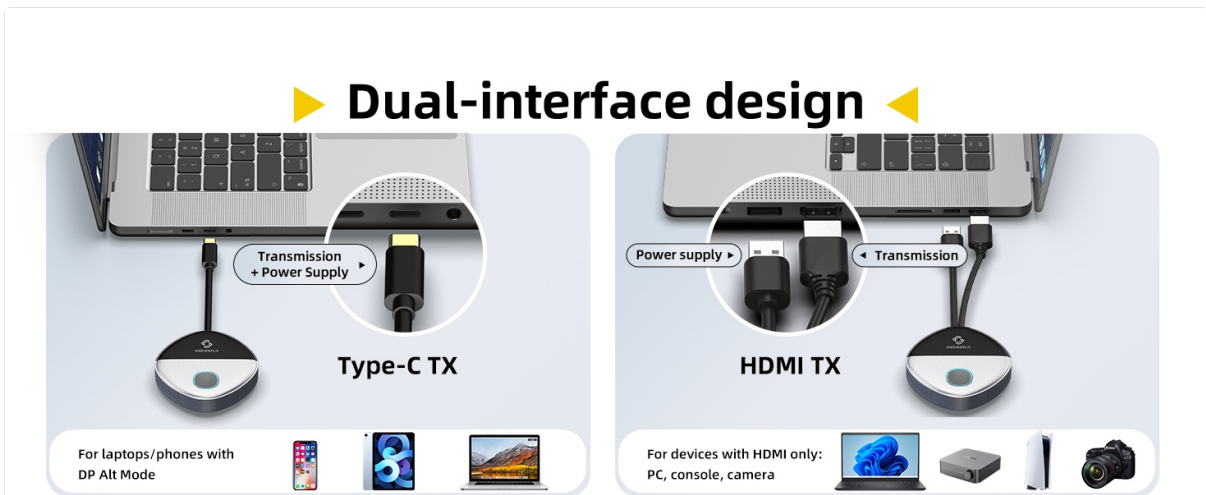


Image: Illustration of connecting Type-C and HDMI transmitters to compatible devices like laptops, smartphones, and cameras.

3. Automatic Pairing:

Wait for the transmitter and receiver to automatically pair and connect. The TX light will blink during pairing and become solid blue once connected. The RX light will be solid blue when powered on.

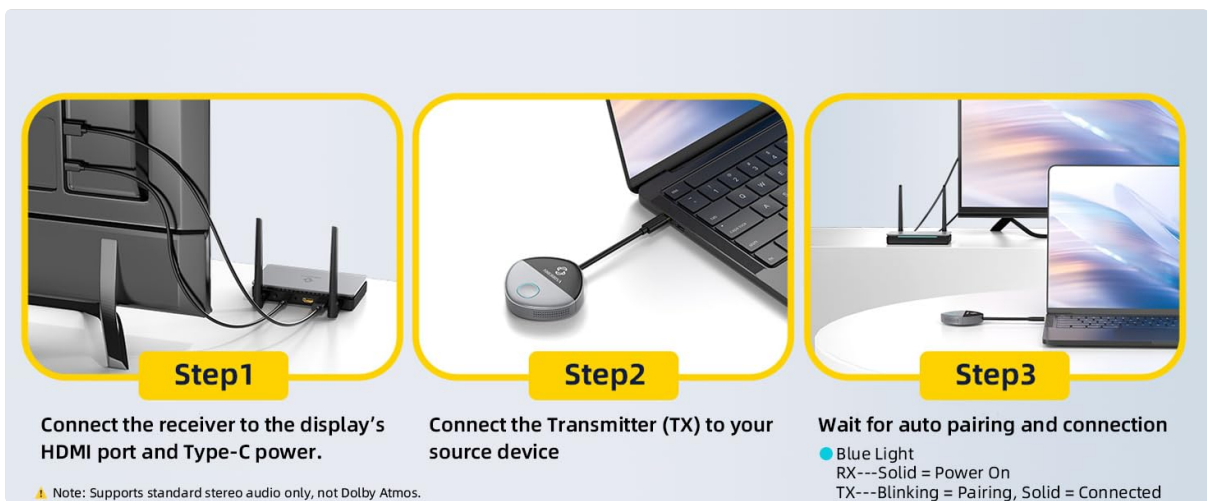


Image: Visual representation of the pairing process, showing the TX and RX units and their indicator lights.

2.2 Connecting Multiple Transmitters

The WHD-5100 system supports connecting up to 32 transmitters to a single receiver, allowing for easy switching between multiple sources.

1. **Connect Receiver:** Follow Step 1 from Basic Connection to connect the receiver to your display.
2. **Pair First Transmitter:** Insert the first transmitter into your source device and hold its button to enter pairing mode. The TX light will blink. Once paired, the light will become solid.
3. **Pair Additional Transmitters:** Repeat the process for each additional transmitter. Each transmitter needs to be paired individually with the receiver.

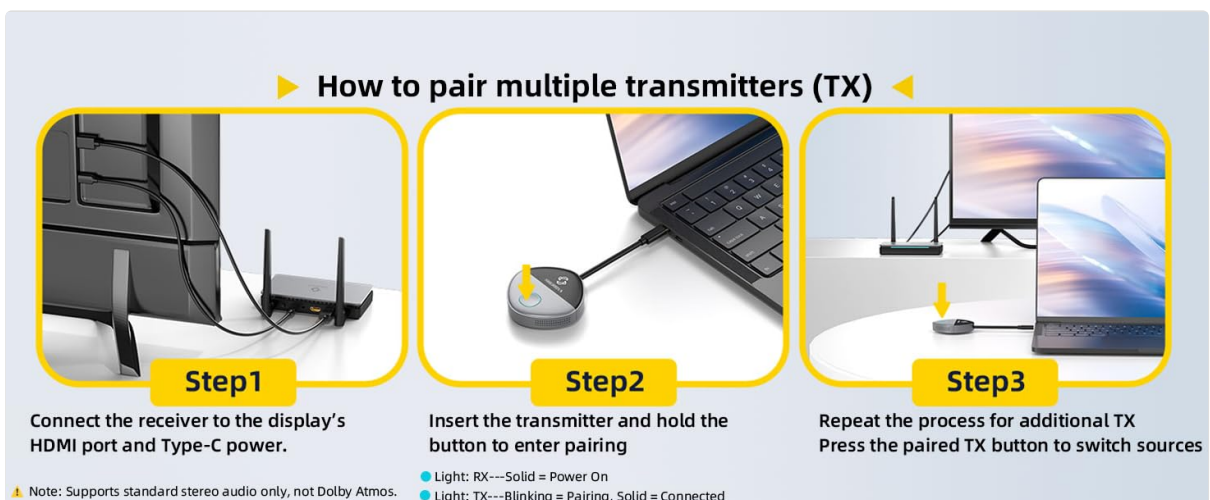


Image: Diagram illustrating the process of pairing multiple transmitters to a single receiver unit.

2.3 Connecting Your Phone (Screen Mirroring)

For phone connectivity, the WHD-5100 supports screen mirroring via AirPlay, Miracast, and Chromecast.

1. **Connect Receiver:** Follow Step 1 from Basic Connection to connect the receiver to your display.
2. **Connect Phone to Receiver's Wi-Fi:** On your phone, find and connect to the receiver's Wi-Fi network (SSID and password will be displayed on the screen).
3. **Enable Screen Mirroring:** On your phone, enable screen mirroring. For Android, this might be 'Screen Cast' or 'Smart View'. For iOS, use 'AirPlay'. Select the WHD-5100 device from the list.

▶ How to Connect Your Phone to WHD-5000 ◀



Step1

Connect the receiver to the display's HDMI port and Type-C power.



Step2

On your phone, join the receiver's Wi-Fi (SSID & password shown on screen).



Step3

Enable Screen Mirroring (Android: Screen Cast/Smart View, iOS: AirPlay).

Tip: Optional - If you need to change the SSID, password, or other settings, open a browser on your phone, enter 192.168.203.1, and log into the setup page.

Image: Visual guide for connecting a smartphone to the WHD-5100 receiver via Wi-Fi and enabling screen mirroring.

3. OPERATING INSTRUCTIONS

3.1 Switching Sources

When multiple transmitters are paired, you can switch between them with a single click on the desired transmitter's button. This allows for effortless transitions during presentations or collaborative work.



Image: A meeting scenario demonstrating how to switch between different laptop sources using the transmitter's button.

3.2 Display Modes: Mirror & Extended

The WHD-5100 supports both Mirror and Extended display modes, depending on your operating system's capabilities.

- **Mirror Mode:** Displays the same content on both your source device and the connected display.
- **Extended Mode:** Allows you to display different content on your source device and the connected display, expanding your workspace.

► Support Mirror&Extended Mode ◀

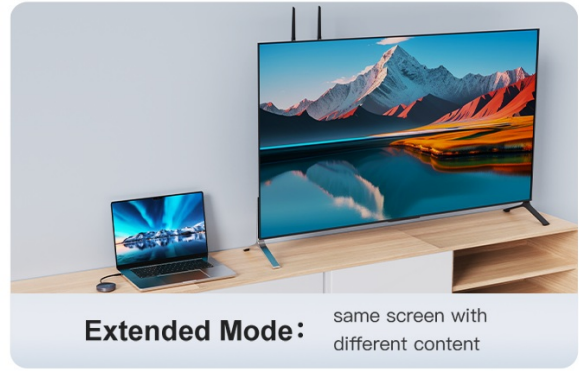
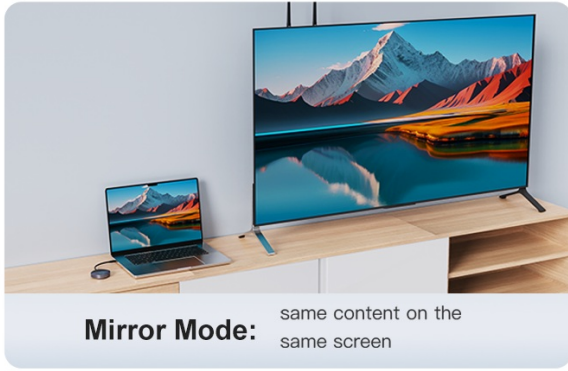


Image: Side-by-side comparison of Mirror Mode (same content) and Extended Mode (different content) on a laptop and external display.

3.3 Separate Audio Output

The receiver includes a 3.5mm audio jack, allowing you to connect external speakers for enhanced sound, especially useful with projectors or monitors that lack built-in audio.



Image: A person relaxing while listening to audio from external speakers connected to the SHERRIVA receiver, which is displaying content on a TV.

3.4 HDMI Backup Port

The receiver features an HDMI backup port. In case of wireless signal interruption or for a wired connection preference, you can connect an HDMI cable directly from your source to this port to ensure continuous display.

► HDMI Port as Backup for Any Scenario ◀



Tip: Stay connected for meetings, streaming, and presentations—even in sudden interruptions.

Image: A scenario depicting a wireless signal loss and the solution of using the HDMI backup port for uninterrupted display.

4. MAINTENANCE

The SHERRIVA WHD-5100 is designed for reliable, long-term operation with minimal user maintenance.

- **Automatic Daily Reboot:** The system is programmed to perform an automatic daily reboot at 3:00 AM. This clears the cache, prevents potential freezes or lags, and ensures consistent stable performance without manual intervention.

- **Cleaning:** Use a soft, dry cloth to clean the exterior of the transmitter and receiver units. Avoid using liquid cleaners or abrasive materials.
- **Storage:** When not in use for extended periods, store the device in a cool, dry place away from direct sunlight and extreme temperatures.

Daily Auto-Restart for Stable Performance

- ✓ *Auto reboot at 3:00 AM*
- ✓ *Clears memory & prevents crashes*
- ✓ *No manual reset needed*
- ✓ *Less maintenance effort*

Image: A visual representation of the daily auto-restart feature, emphasizing its role in maintaining stable performance.

5. TROUBLESHOOTING

If you encounter issues with your SHERRIVA WHD-5100, please refer to the following common problems and solutions:

Problem	Possible Cause	Solution
No signal on display	Transmitter not powered or connected correctly. Receiver not powered or connected to display. Pairing failed.	Ensure both TX and RX units are powered on and correctly connected. Check HDMI/USB-C cables. Re-attempt pairing by holding the TX button.
Intermittent signal or lag	Excessive distance between TX and RX. Obstructions (e.g., thick walls). Interference from other wireless devices.	Reduce distance between TX and RX. Minimize obstructions. Try changing the wireless channel if possible (refer to advanced settings via IP if applicable).
Phone mirroring not working	Phone not connected to receiver's Wi-Fi. Screen mirroring feature not enabled or incompatible.	Ensure your phone is connected to the WHD-5100's Wi-Fi. Verify your phone's screen mirroring function (AirPlay, Miracast, Chromecast) is active and selecting the correct device.
No audio output	Display audio settings incorrect. External speakers not connected or powered.	Check your display's audio settings. If using the 3.5mm jack, ensure external speakers are properly connected and powered. Note: Supports standard stereo audio only, not Dolby Atmos.
USB-C transmitter not working	Source device's USB-C port does not support video output (DP Alt Mode).	Verify that your device's USB-C port supports DisplayPort Alternate Mode (DP Alt Mode) for video output. Consult your device's manual.

6. SPECIFICATIONS

Feature	Detail
Model Number	WHD-5100
Brand	SHERRIVA
Connectivity Technology	Wireless (2.4G/5G Dual-band)
Video Resolution	1080P@60Hz
Latency	< 0.05 seconds
Transmission Range	Up to 328 ft (100 m)
Transmitter Inputs	USB Type-C (DP Alt Mode required), HDMI
Receiver Outputs	HDMI, 3.5mm Audio Jack
Max Transmitters per Receiver	Up to 32
Compatible Devices	Personal Computer, Smartphone, Tablet, Television, Projector
Video Encoding	H.264, H.265/HEVC
Item Weight	1.48 pounds
Product Dimensions	6.93 x 6.5 x 2.68 inches
Color	Gray

Dimensions



Image: Detailed diagram illustrating the physical dimensions of the SHERRIVA WHD-5100 receiver and transmitter units.

7. WARRANTY AND SUPPORT

For warranty information and technical support, please refer to the documentation included with your product or visit the official SHERRIVA website. You may also contact customer service through the retailer where the product was purchased.

Online Resources:

- SHERRIVA Store on Amazon: Visit the SHERRIVA Store