

Veement V200Pro

VEEMENT V200Pro 2.5K Car Dash Cam User Manual

Model: V200Pro

1. INTRODUCTION

This manual provides comprehensive instructions for the installation, operation, and maintenance of your VEEMENT V200Pro 2.5K Car Dash Cam. Please read this manual carefully before using the device to ensure proper functionality and safety. Keep this manual for future reference.

2. PACKAGE CONTENTS

Verify that all items listed below are included in your package:

- 1 x VEEMENT V200Pro Dash Cam
- 1 x Car Charger
- 2 x Electrostatic Stickers
- 1 x Spare 3M Adhesive Pad
- 1 x Easy Pry Tool
- 1 x User Manual + Installation Guide



Image: All components included in the VEEMENT V200Pro Dash Cam package, laid out for clear viewing.

3. PRODUCT OVERVIEW

The VEEMENT V200Pro is a compact 2.5K car dash camera designed to record driving footage. It features a 1.47-inch display, a 160° wide-angle lens, and various recording modes.



Image: The VEEMENT V200Pro Dash Cam shown alongside a smartphone displaying its companion app interface.

4. SETUP AND INSTALLATION

4.1. Inserting the Memory Card

The V200Pro requires a Micro SD card (not included) for recording. Use a U1 grade or higher SD card with a maximum capacity of 256GB for optimal performance.

1. Locate the Micro SD card slot on the side of the dash cam.
2. Insert the Micro SD card with the gold contacts facing the back of the dash cam until it clicks into place.
3. To remove, gently push the card until it clicks out, then pull it from the slot.

RECOMMENDED SD CARD

Max Support 256GB Micro SD Card. For getting smooth recording video, we recommend **Class 10, U1** Speed Micro-SD memory card.



SD card is NOT included in the packaging.

Image: A Micro SD card being inserted into the designated slot on the side of the dash cam.

4.2. Mounting the Dash Cam

The V200Pro is designed for windshield mounting using the provided adhesive pad.

1. Clean the windshield area where the dash cam will be mounted. Ensure it is free of dust and grease.
2. Attach an electrostatic sticker to the cleaned area of the windshield. This helps protect the windshield and makes removal easier.
3. Peel off the protective film from the 3M adhesive pad and firmly press the dash cam mount onto the electrostatic sticker. Hold for 30 seconds.
4. Adjust the camera angle using the 60° rotatable bracket to ensure a clear view of the road.



Image: The dash cam discreetly installed on the upper center of a car's windshield, showing minimal obstruction to the driver's view.

Image: A diagram demonstrating the flexible 60-degree rotation capability of the dash cam's mounting bracket, allowing for optimal angle adjustment.

4.3. Power Connection

Connect the provided car charger to the dash cam's power port and plug the other end into your vehicle's cigarette lighter socket. The dash cam will power on automatically when the vehicle starts and power off when the engine is turned off.

5. OPERATING INSTRUCTIONS

5.1. Basic Operation

- **Power On/Off:** The dash cam powers on automatically with vehicle ignition and powers off when the engine is off. Manual power control may be available via a dedicated button (refer to the included Installation Guide for button layout).
- **Recording:** Once powered on and with a valid SD card inserted, the dash cam begins recording automatically. A red indicator light or on-screen icon typically confirms recording status.
- **Display:** The 1.47-inch display allows for real-time viewing of recordings and menu navigation.

5.2. Video Quality

The V200Pro records video at 2.5K (2560x1440P) resolution with a 160° wide-angle lens, capturing clear details of license plates and road signs.

2.5K@30FPS DASH CAM

Clearly record license plate numbers, road signs and road conditions.

2.5K

2.5K QHD



6 Layer Glass



170° Wide Angle

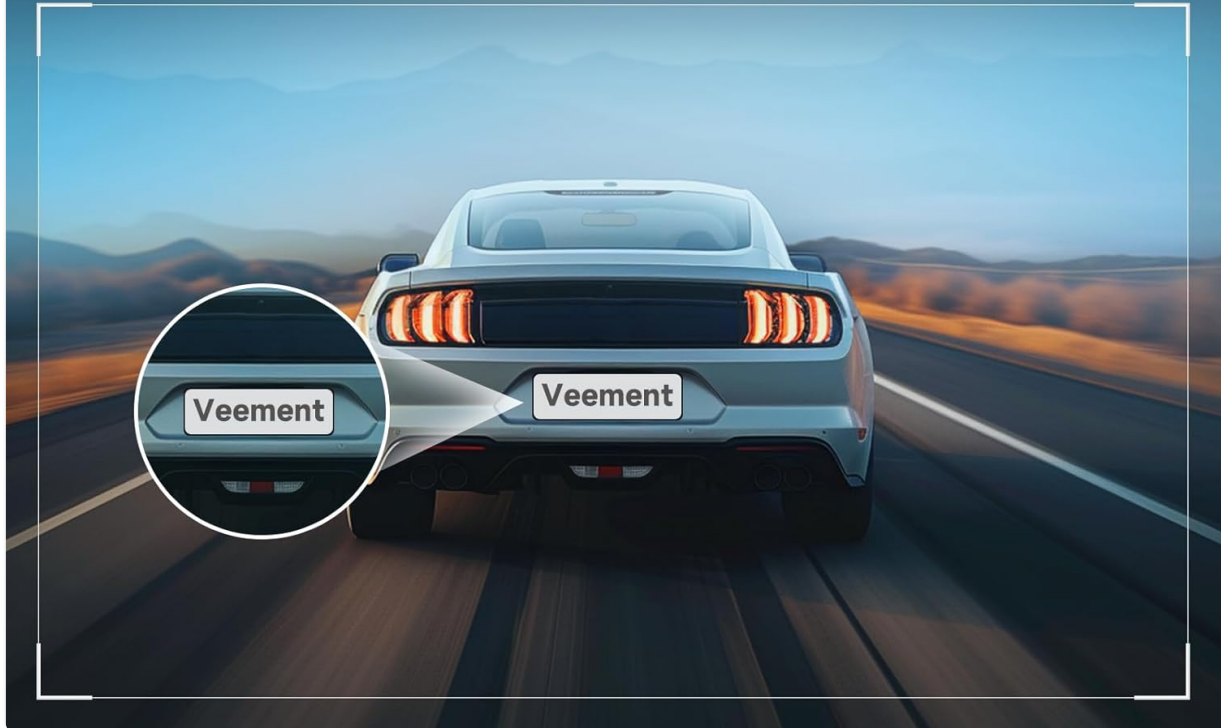


Image: A visual representation of the dash cam's 2.5K QHD recording capability and 160-degree wide-angle view, showing a car from behind on a road.

5.3. Loop Recording

When the memory card reaches its storage limit, the dash cam automatically overwrites the oldest recordings with new footage. This ensures continuous recording without manual intervention. Video segments are typically recorded in 1, 2, or 3-minute intervals.

Endless Loop Recording

1/2/3 min loop recording, the oldest video will be overwritten when the SD card is full so that can keep recording over and over.

SUPPORT 256GB MAX
(SD Card Not Included)

32G	<div><div></div></div>	3H
64G	<div><div></div></div>	6H
128G	<div><div></div></div>	12H
256G	<div><div></div></div>	24H



Image: A chart illustrating the approximate recording duration for different Micro SD card capacities (32GB, 64GB, 128GB, 256GB) with loop recording enabled.

5.4. G-Sensor (Emergency Recording)

The built-in G-Sensor detects sudden impacts or collisions. When triggered, it automatically locks the current video segment, preventing it from being overwritten by loop recording. These emergency videos are stored in a separate, protected folder on the SD card.



Image: An illustration depicting two cars involved in a collision, with a prominent lock icon symbolizing the G-Sensor's function to secure incident footage.

5.5. Parking Monitor

The 24-hour parking monitor feature provides surveillance when your vehicle is parked. It automatically activates and records video upon detecting collisions or motion (depending on settings). **Note: This feature requires a hardwire kit (ASIN: B0D93L49TD), which is sold separately.**

RECOMMENDED HARDWARE KIT

V200 support 24 hours recording only when it is connected to a USB hardwire kit (not included in the package).

Please go to [amazon.com](https://www.amazon.com/s?k=B0CTHMSKWF) search **B0CTHMSKWF**.



Image: The VEEMENT V200Pro Dash Cam displayed alongside a hardwire kit, indicating its necessity for enabling 24-hour parking monitoring.

Image: An illustration of a car under a protective shield with a '24H' icon, signifying continuous parking monitoring.

5.6. Time-Lapse Recording (Parking Mode)

When the hardwire kit is installed and parking mode is active, the dash cam can record in time-lapse mode (e.g., 1 frame per second). This compresses long periods of parking surveillance into shorter video files, conserving memory card space while providing continuous coverage.

Time Lapse

The dash cam will record at 1fps per second under this mode. Every 30 minutes of videos will be compressed to 1 minute, guarding your car all day without taking up much memory.



Hardwire Kit Needed

Extra Purchase Asin: B0BCPPN3YR



Image: A smartphone screen showing a compressed time-lapse video recorded by the dash cam, demonstrating the feature's output.

5.7. Super Night Vision

The V200Pro is equipped with an F1.6 large aperture and a 6-layer glass lens, which increases light intake by 60%. Combined with Wide Dynamic Range (WDR) technology, this enhances recording clarity in low-light conditions, providing clear footage at night.

SUPER NIGHT VISION

With F1.6 large aperture, 6-Glass lens enhances the recording night vision in low light environment.



Image: A car driving on a road at night, demonstrating the enhanced visibility and clarity provided by the dash cam's super night vision feature.

6. APP CONTROL (WiFi)

The V200Pro features built-in 2.4G WiFi for seamless connection to its companion app on iOS and Android smartphones. This allows for convenient management of recordings.

6.1. Connecting to the App

1. Download the 'VeeCar' app from the App Store (iOS) or Google Play Store (Android).
2. Power on the dash cam.
3. On your smartphone, go to WiFi settings and connect to the dash cam's WiFi network (SSID and password can be found in the dash cam's settings or included guide).
4. Open the VeeCar app. The app should automatically connect to the dash cam.



Image: A hand holding a smartphone displaying the dash cam's app interface, showing options for viewing, sharing, editing, and downloading videos.



Image: A smartphone displaying the VeeCar app, showing live footage from the dash cam and options for app control.

6.2. App Functions

Through the VeeCar app, you can:

- View live footage from the dash cam.
- Review recorded videos and photos.
- Download recordings directly to your smartphone.
- Adjust dash cam settings.
- Share videos and photos.

7. MAINTENANCE

- **Cleaning:** Use a soft, dry cloth to clean the dash cam lens and body. Avoid using abrasive cleaners or solvents.
- **SD Card Formatting:** Regularly format the Micro SD card (at least once a month) within the dash cam's settings to ensure optimal performance and prevent data corruption. Back up any important files before formatting.
- **Temperature:** The dash cam is designed to operate in temperatures from -40°F to 185°F (-40°C to 85°C). Avoid prolonged exposure to extreme temperatures outside this range.



Image: An internal view of the dash cam's circuit board, highlighting its aluminum alloy shell for heat dissipation and overall durability.

8. TROUBLESHOOTING

- **Dash Cam Not Powering On:** Check the car charger connection and ensure the vehicle's cigarette lighter socket is functioning.
- **Recording Errors:** Ensure a U1 grade or higher Micro SD card is inserted and formatted. Try formatting the card again or using a different card.
- **WiFi Connection Issues:** Ensure the dash cam's WiFi is enabled. Restart both the dash cam and your smartphone. Verify you are connecting to the correct WiFi network.
- **Parking Monitor Not Working:** Confirm that the optional hardwire kit is correctly installed and connected.
- **Blurred Footage:** Clean the dash cam lens. Ensure the protective film has been removed from the lens.

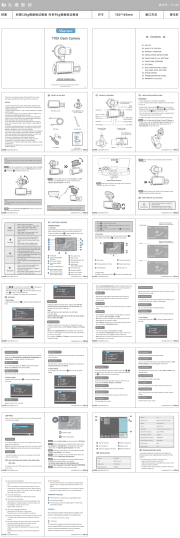
9. SPECIFICATIONS

Feature	Specification
Model Name	V200Pro
Video Capture Resolution	2.5K (2560x1440P)
Field of View	160 Degrees
Display	1.47" IPS Display
Connectivity Technology	Wi-Fi (2.4G)
Special Features	Compact Design, WDR, G-Sensor, Loop Recording, Night Vision, Parking Monitor (requires hardwire kit), Speaker
Mounting Type	Windshield Mount
Product Dimensions	1.2 x 3.6 x 1.8 inches
Item Weight	8.4 ounces
Operating Temperature	-40°F to 185°F (-40°C to 85°C)
Max SD Card Support	256GB (U1 grade or higher recommended)

10. WARRANTY AND SUPPORT

Warranty information and specific customer support details are not provided in the available product data. Please refer to the product packaging or the manufacturer's official website for warranty terms and contact information for technical support.

Related Documents - V200Pro

	<p>Veement T70X 4K Dual Dash Cam User Manual</p> <p>User manual for the Veement T70X 4K Dual Dash Cam. Learn how to install, operate, and troubleshoot this advanced car camera featuring GPS, Sony STARVIS sensor, infrared night vision, and parking mode. Includes setup guides, feature explanations, and common issue resolutions.</p>
---	---