

## LOFREE Flow2

# LOFREE Flow2 Low-Profile Mechanical Keyboard User Manual

Model: Flow2 (OE928)

## 1. INTRODUCTION

This manual provides detailed instructions for the LOFREE Flow2 Low-Profile Mechanical Keyboard. Please read this guide thoroughly to ensure proper setup, operation, and maintenance of your device. The LOFREE Flow2 is designed for enhanced typing experience across various operating systems and connectivity modes.

## 2. PACKAGE CONTENTS

Verify that all items are present in your package:

- Lofree Flow 2 Mechanical Keyboard
- 1.5m USB-C Cable
- 2.4GHz Receiver
- 4 Keycaps (additional)
- User Guide (this document)



Image: Contents of the LOFREE Flow2 keyboard package.

### 3. PRODUCT OVERVIEW

#### 3.1 Key Features

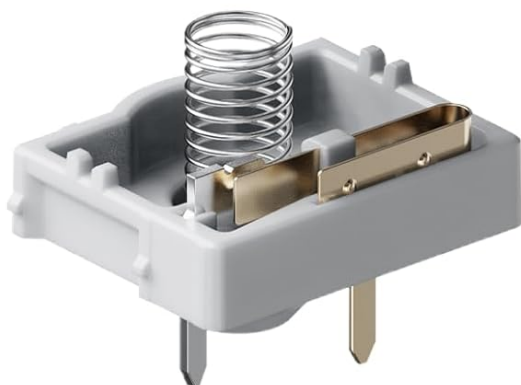
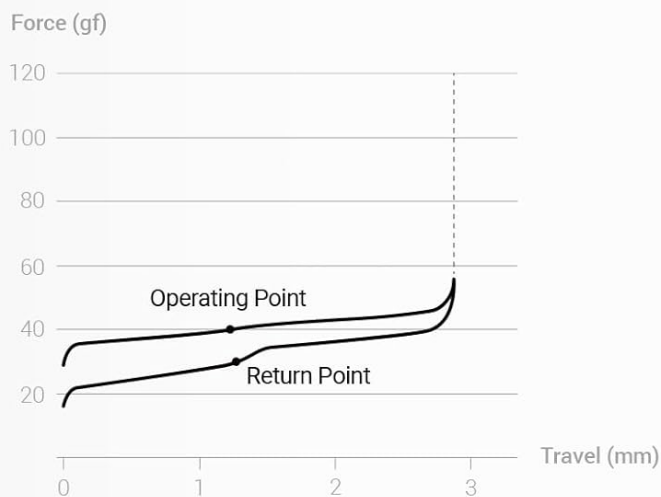
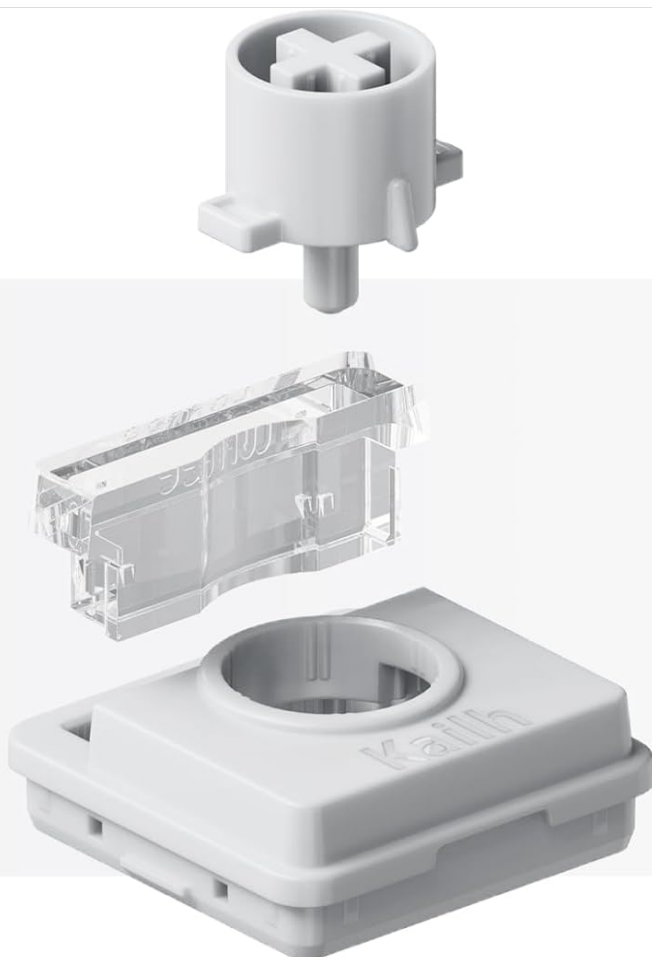
- **One-Piece Aluminum Body:** Crafted from a single block of aluminum for durability and a smooth matte finish.
- **Cloud Switch Series (Surfer Linear):** Features POM material for smooth typing, lighter press, and stable return.
- **Enhanced Backlight:** 3.2X larger light holes for crisp, sharp illumination.
- **Gasket Design:** Maximizes dampening with 5 layered materials for a soft and cushioned keystroke.
- **QMK/VIA Compatibility:** Allows for effortless customization of key remapping, macros, and shortcuts.
- **Flexible 3-Mode Connectivity:** Supports 2.4GHz wireless, Bluetooth, and wired (Type-C) connections.
- **Side Touch Bar:** Intuitive controls for volume, screen brightness, and lock function.
- **Long Battery Life:** 3000mAh battery provides up to 120 hours of use.
- **1000Hz Polling Rate:** Ensures lag-free performance in wired and 2.4GHz wireless modes (not available in Bluetooth mode).
- **Windows/macOS Keycaps:** Includes dedicated keycaps for seamless switching between operating systems.

#### 3.2 Visual Components



Image: LOFREE Flow2 68-key mechanical keyboard, top view.

# Surfer



SWITCH TYPE

Linear

Total Travel

$2.8 \pm 0.25\text{mm}$

Spring Length

15.5mm

Actuation Force

$40 \pm 10\text{gf}$

Actuation Travel

$1.3 \pm 0.3\text{mm}$

Durability

50 million times

Image: Detail of the one-piece aluminum body construction.

# One-Piece Aluminum Body



Image: Keyboard with keycaps removed, showing low-profile switches.

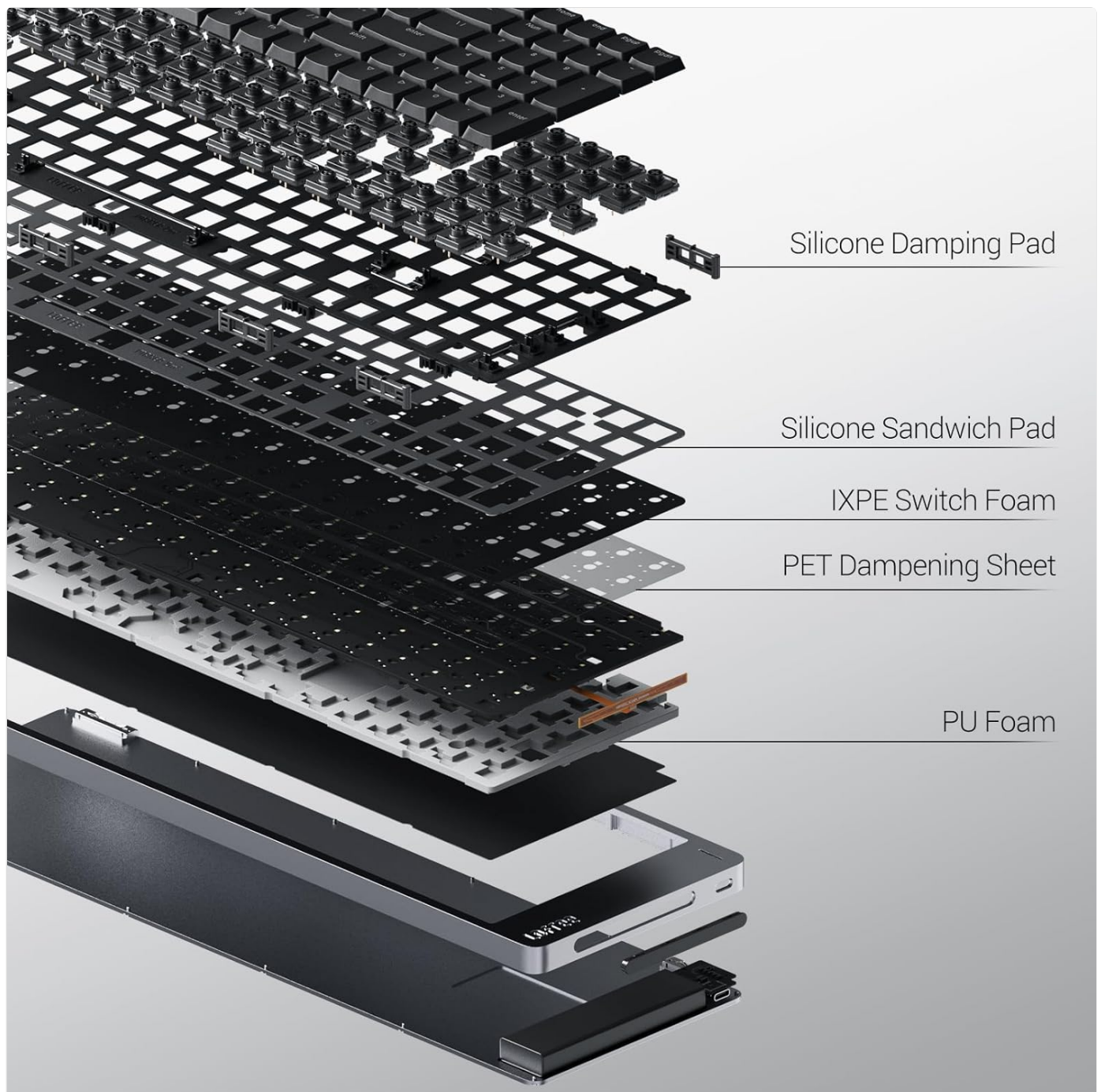


Image: Exploded view and specifications of the Surfer Linear switch.





## Touch Bar



Volume Control



Screen Brightness



Lock Function

Image: Internal layered gasket design for sound dampening.

# OMK/VIA SUPPORT

## Fully Customize Your Keyboard



Image: Side Touch Bar for volume, brightness, and lock control.

# Tri-mode Connections



Image: QMK/VIA software interface for keyboard customization.





Image: Tri-mode connectivity options: 2.4GHz, Bluetooth 5.3, and Wired (USB-C).

# WHAT'S IN THE BOX



1  
Lofree Flow 2  
Mechanical Keyboard

2  
1.5m USB-C Cable

3  
2.4GHz Receiver

4  
4 Keycaps

5  
User Guide

Image: Illustration of 1000Hz polling rate capability.

Your browser does not support the video tag.

Video: Official product video showcasing the LOFREE Flow2 Low-Profile Mechanical Keyboard's features and design.

## 4. SETUP

### 4.1 Powering On/Off

Locate the power switch on the side or back of the keyboard. Slide it to the "ON" position to power on the keyboard. Slide it to "OFF" to power off.

### 4.2 Connecting Your Keyboard

The LOFREE Flow2 supports three connection modes: 2.4GHz wireless, Bluetooth, and wired USB-C.

#### 4.2.1 2.4GHz Wireless Connection

1. Locate the 2.4GHz USB receiver in the package.
2. Plug the 2.4GHz receiver into an available USB port on your computer.
3. Switch the keyboard's mode selector to the 2.4GHz position (often indicated by a wireless icon).
4. The keyboard should automatically connect. If not, press **Fn + 4** to activate 2.4GHz pairing mode.

#### 4.2.2 Bluetooth Connection

The keyboard can connect to up to three Bluetooth devices.

1. Switch the keyboard's mode selector to the Bluetooth position (often indicated by a Bluetooth icon).
2. Press and hold **Fn + 1**, **Fn + 2**, or **Fn + 3** for 3-5 seconds to enter pairing mode for the desired Bluetooth channel. The indicator light will flash rapidly.
3. On your device (computer, tablet, smartphone), open Bluetooth settings and search for "LOFREE Flow2".
4. Select the keyboard to pair. The indicator light on the keyboard will stop flashing once connected.
5. To switch between paired Bluetooth devices, press **Fn + 1**, **Fn + 2**, or **Fn + 3** briefly.

#### 4.2.3 Wired USB-C Connection

1. Connect one end of the provided USB-C cable to the keyboard's USB-C port.
2. Connect the other end to an available USB port on your computer.
3. Switch the keyboard's mode selector to the wired position (often indicated by a cable icon).
4. The keyboard will be recognized as a standard USB keyboard and begin charging.

### 4.3 Operating System Compatibility

The LOFREE Flow2 is compatible with both Windows and macOS. Use the dedicated keycaps provided to match your operating system. To switch between Windows and macOS layouts, use the appropriate function key combination (refer to the keyboard's specific markings or the QMK/VIA software for details).

## 5. OPERATING INSTRUCTIONS

---

### 5.1 Function Keys (Fn Combinations)

The keyboard features a Function (Fn) key that, when combined with other keys, activates secondary functions. Common combinations include:

- **Fn + F1-F12:** Multimedia controls, system functions (e.g., volume, brightness, media playback).
- **Fn + Backlight Key:** Adjust backlight brightness or change lighting effects.
- **Fn + OS Switch Key:** Toggle between Windows and macOS key layouts.
- **Fn + 1/2/3/4:** Switch between Bluetooth channels (1, 2, 3) and 2.4GHz wireless (4).

Refer to the keycap legends for specific functions on your keyboard layout.

### 5.2 Backlight Control

The keyboard features a single-color backlight with adjustable brightness levels. Use the designated Fn key combination (e.g., **Fn + Arrow Up/Down** or a specific backlight key) to cycle through brightness levels or turn the backlight on/off.

### 5.3 Side Touch Bar

The side touch bar provides quick access to control functions:

- **Volume Control:** Swipe up or down on the touch bar to adjust system volume.
- **Screen Brightness:** Swipe to adjust screen brightness (functionality may vary by OS).

- **Lock Function:** Tap to activate a lock function, preventing accidental touches.

## 5.4 QMK/VIA Customization

The LOFREE Flow2 supports QMK/VIA for advanced customization. This allows you to:

- Remap any key to a different function.
- Create custom macros for complex sequences.
- Set one-tap shortcuts for applications.
- Switch between different key layouts for work or gaming.

To use QMK/VIA, download the software from the official LOFREE website and follow the on-screen instructions. No technical programming skills are required for basic customization.

## 6. MAINTENANCE

---

### 6.1 Cleaning

- Disconnect the keyboard from all power sources before cleaning.
- Use a soft, lint-free cloth slightly dampened with water or a mild cleaning solution to wipe the keycaps and body.
- Avoid spraying liquids directly onto the keyboard.
- For cleaning between keycaps, use compressed air or a small brush.

### 6.2 Battery Care

- To prolong battery life, avoid fully discharging the keyboard frequently.
- Store the keyboard in a cool, dry place when not in use for extended periods.
- Charge the keyboard using the provided USB-C cable or a certified charger.

## 7. TROUBLESHOOTING

---

### 7.1 Keyboard Not Responding

- **Check Power:** Ensure the keyboard is powered on and has sufficient battery charge. Connect it via USB-C to charge.
- **Check Connection Mode:** Verify the keyboard is set to the correct connection mode (2.4GHz, Bluetooth, or Wired) for your setup.
- **Re-pair (Wireless):** For 2.4GHz, unplug and re-plug the receiver. For Bluetooth, delete the keyboard from your device's Bluetooth list and re-pair.
- **Try Wired Connection:** If wireless modes fail, connect via USB-C to rule out wireless issues.

### 7.2 Keys Not Working or Double-Typing

- **Clean Keys:** Dust or debris under keycaps can cause issues. Use compressed air to clean.
- **Software Interference:** Check if any third-party software or drivers are interfering.
- **QMK/VIA Reset:** If you've customized keys, try resetting the layout in QMK/VIA software.

### 7.3 Backlight Issues

- **Adjust Brightness:** Ensure the backlight is not set to the lowest brightness or turned off.
- **Battery Level:** Low battery can affect backlight performance. Charge the keyboard.

## 7.4 Side Touch Bar Not Responding

- **Clean Surface:** Ensure the touch bar surface is clean and free of obstructions.
- **Software/Driver:** Verify that necessary drivers are installed (if applicable) and no software is overriding its functions.


## 8. SPECIFICATIONS

Model Number	OE928
Product Dimensions	13.43"L x 4.21"W x 0.52"H (34.11 x 10.69 x 1.32 cm)
Item Weight	1.4 pounds (0.63 kg)
Connectivity Technology	Bluetooth, 2.4GHz RF, USB-C Wired
Keyboard Description	Mechanical, Low-Profile
Switch Type	Surfer Linear (Cloud Series)
Special Features	Backlit, Hot-Swappable, Programmable Keys, Rechargeable, Side Touch Bar
Battery	3000mAh (Nonstandard Battery, included)
Polling Rate	1000Hz (Wired & 2.4GHz modes)
Compatible Devices	Laptop, PC (Windows, macOS)
Material	Aluminum Alloy






## 9. WARRANTY AND SUPPORT

For warranty information, technical support, or to access additional resources, please visit the official LOFREE website or contact their customer service. Keep your purchase receipt for warranty claims.  
Official LOFREE Website: [www.lofree.co](http://www.lofree.co)

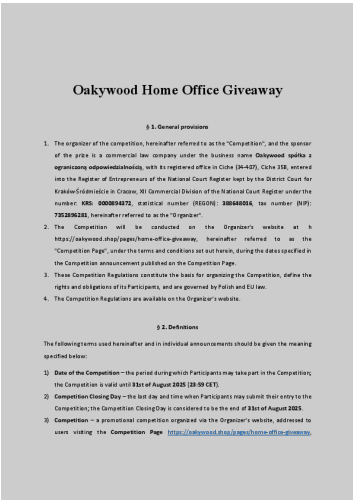
### Related Documents - Flow2

	<p><a href="#">Lofree FLOW 2 Triple Mode Mechanical Keyboard User Manual and Regulatory Information</a></p> <p>User manual and regulatory compliance information for the Lofree FLOW 2, a low-profile mechanical keyboard featuring triple mode connectivity (wired USB-C, Bluetooth, 2.4GHz wireless).</p>
---	---



	<p><a href="#">Lofree FLOW 84 Mechanical Keyboard User Manual - Setup, Features, and Specifications</a></p> <p>Comprehensive user manual for the Lofree FLOW 84 dual-mode mechanical keyboard. Learn about setup, Bluetooth and wired connections, system switching, multifunction keys, and technical specifications.</p>
	<p><a href="#">Lofree EDGE84 Low Axis Keyboard: Instruction Manual &amp; Specifications</a></p> <p>Comprehensive instruction manual for the Lofree EDGE84 Low Axis Keyboard, covering specifications, wired and Bluetooth connection guides, indicator lights, system switches, multimedia functions, environmental information, and FCC compliance.</p>
	<p><a href="#">Lofree Flow 84-Key Dual Mode Low-Profile Mechanical Keyboard Manual</a></p> <p>User manual for the Lofree Flow 84-Key Dual Mode Low-Profile Mechanical Keyboard, detailing specifications, diagrams, connectivity, and function key usage.</p>
	<p><a href="#">LOFREE FLOW 2 Triple Mode Low-Profile Mechanical Keyboard User Manual</a></p> <p>User manual and regulatory compliance information for the LOFREE FLOW 2 Triple Mode Low-Profile Mechanical Keyboard, including IC and FCC statements.</p>
	<p><a href="#">LOFREE FLOW 2-100 Triple Mode Low-Profile Mechanical Keyboard User Manual   Features &amp; Compliance</a></p> <p>Official user manual for the LOFREE FLOW 2-100 Triple Mode Low-Profile Mechanical Keyboard (Model OE926). Learn about its features, connectivity, and FCC/IC regulatory compliance.</p>

Documents - LOFREE – Flow2



[Oakywood Home Office Giveaway - Official Terms and Conditions](#)

Official terms and conditions for the Oakywood Home Office Giveaway. Details participation rules, prize eligibility, winner selection, prize details, complaint procedures, and personal data protection. Enter for a chance to win Oakywood products.

lang:en score:14 filesize: 160.83 K page\_count: 10 document date: 2025-08-14

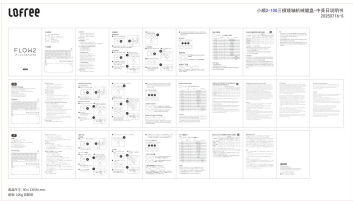


[\[pdf\]](#)

V2     cdr Administrator             Flow2 68 Lofree Japan 1 × Flow2 Keyboard1 USB C Cable 5m 2 4GHz  
4       1             flow2 68cdn shopify s files 0692 4786 0967 flow2 v 1757581843 |||

...

lang:en score:14 filesize: 3.08 M page\_count: 1 document date: 2025-07-16



[\[pdf\]](#)

V2     cdr Administrator             Flow2 100 Lofree Japan 1 × Flow2 Keyboard1 USB C Cable 5m 2  
4GHz   4       1             flow2 100cdn shopify s files 0692 4786 0967 flow2 v 1757581843 |||

...

lang:en score:14 filesize: 3.09 M page\_count: 1 document date: 2025-07-16



[\[pdf\]](#)

V2     cdr Administrator             Flow2 84 Lofree Japan 1 × Flow2 Keyboard1 USB C Cable 5m 2 4GHz  
4       1             flow2 84cdn shopify s files 0692 4786 0967 flow2 v 1757581843 |||

...

lang:en score:14 filesize: 3.09 M page\_count: 1 document date: 2025-07-16