

## tectake 406030

# tectake Lasley Rectangular Coffee Table

Model: 406030

## 1. INTRODUCTION

This manual provides essential information for the assembly, use, and maintenance of your new tectake Lasley Rectangular Coffee Table. Please read these instructions carefully before assembly and retain them for future reference. This coffee table, with its elegant marble look and robust MDF construction, is designed for use in living rooms, offices, or bedrooms.

## 2. SAFETY INFORMATION

- Ensure all components are present and undamaged before assembly. Do not proceed with assembly if any parts are missing or damaged.
- Assemble the table on a soft, clean surface to prevent scratches.
- Keep small parts away from children during assembly to avoid choking hazards.
- Do not overtighten screws, as this may damage the material.
- The table has a maximum load capacity of 45 kg. Do not exceed this weight limit.
- Avoid placing hot items directly on the surface; use coasters or protective mats.
- Regularly check all connections to ensure they remain tight and secure.

## 3. PACKAGE CONTENTS

Please verify that all the following items are included in your package:

- Coffee Table Top (1x)
- Table Base/Foot (1x)
- Assembly Hardware (screws, connectors)
- Felt Pads (for floor protection)
- Installation Instructions (this manual)

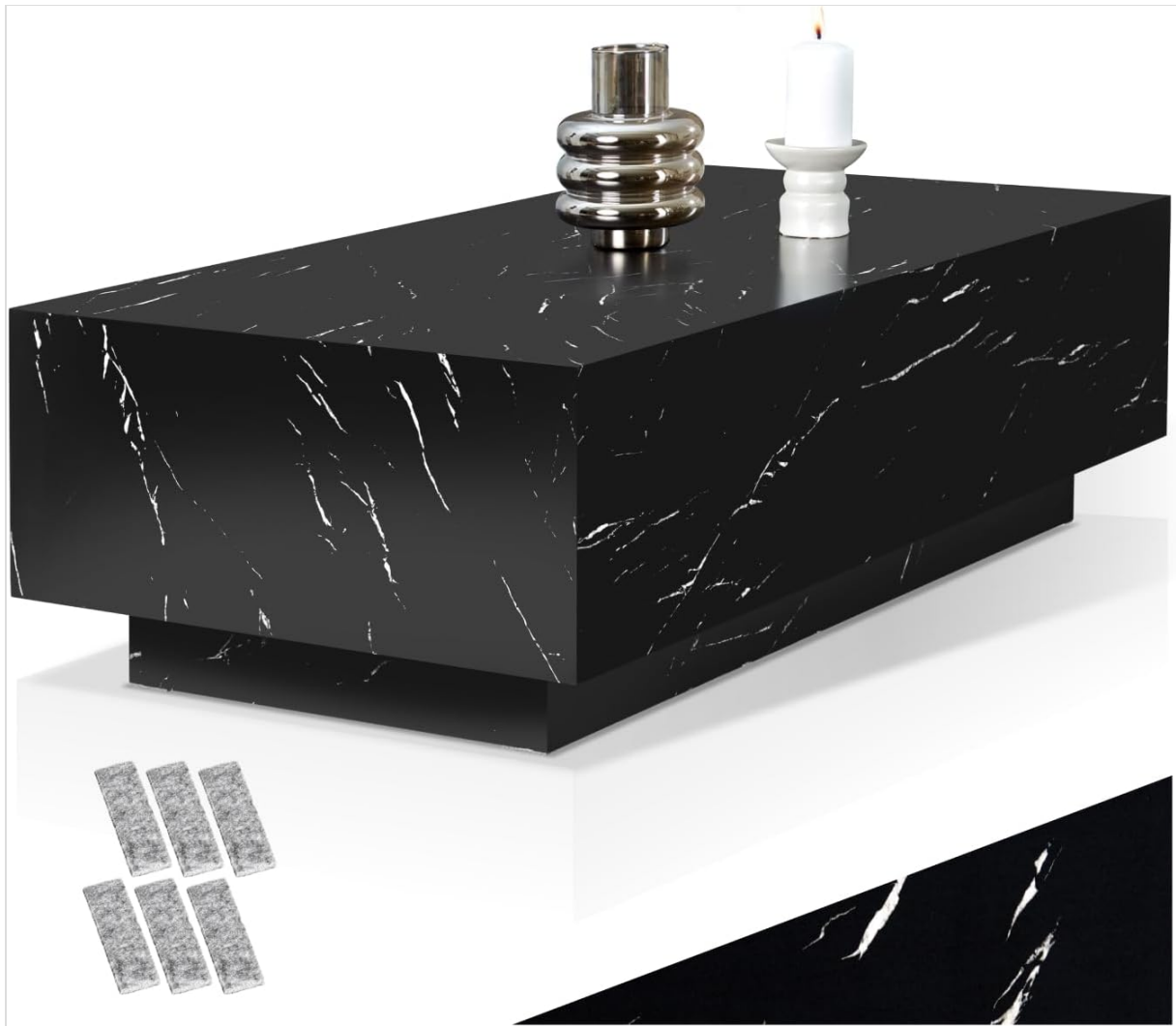


Image 3.1: The tectake Lasley Rectangular Coffee Table with its elegant marble-look finish.

#### 4. ASSEMBLY INSTRUCTIONS

---

The tectake Lasley coffee table is designed for quick and easy assembly, primarily involving the attachment of the table base. No complex tools are required.

1. **Unpack Components:** Carefully remove all parts from the packaging. Place them on a soft, clean surface to prevent damage.
2. **Identify Table Top and Base:** Locate the main table top and the separate table base (foot).
3. **Attach Base to Table Top:** Align the table base with the pre-drilled holes on the underside of the table top. Use the provided assembly hardware (screws) to securely fasten the base to the table top. Ensure the base is centered and stable before tightening the screws.
4. **Apply Felt Pads:** Attach the self-adhesive felt pads to the bottom corners of the table base. These pads protect your floor from scratches and allow for easier movement of the table.
5. **Final Check:** Once assembled, gently lift and place the table in its desired location. Ensure all connections are firm and the table is stable.

## VEEL STIJL & Charme



Image 4.1: View of the table's underside, illustrating the attachment area for the base. The base is secured to the main tabletop using the provided hardware.



De **gladde oppervlakken** zijn **vuilafstotend** & worden eenvoudig gereinigd met een vochtige doek.



Dankzij het **royale tafelloppervlak** heb je alle belangrijke spullen altijd binnen handbereik.



Dankzij het **royale tafelloppervlak** heb je alle belangrijke spullen altijd binnen handbereik.



Dankzij de **zachte viltbeschermers** kan de tafel moeiteloos worden verplaatst.

Image 4.2: A close-up showing the application of protective felt pads to the underside of the table's base. These pads prevent floor damage.

## 5. USAGE

The tectake Lasley coffee table is designed to be a versatile and functional piece of furniture for your living space. It can serve as a central coffee table, a stylish side table, or a decorative accent.

- Place the table on a flat, stable surface to ensure balance.
- Utilize the spacious surface for beverages, books, remote controls, or decorative items.
- Remember the maximum load capacity of 45 kg to prevent damage.
- The integrated felt pads allow for easy and safe repositioning of the table without scratching your floors.






|   |  |
|---|--|
|  <p><b>Moderne salontafel</b><br/>in een hoekige vorm en met strakke lijnen</p>       |  <p><b>Stevige basis</b><br/>garandeert uitzonderlijke stabiliteit</p>                 |
|  <p><b>Robuust MDF</b><br/>met een fijne folie in natuurlijke marmerlook</p>         |  <p><b>Zachte viltglijders</b><br/>vloerbeschermend &amp; gemakkelijk verplaatsen</p> |
|  <p><b>Veelzijdig inzetbaar</b><br/>het unieke ontwerp nodigt uit tot combineren</p> |  <p><b>Eenvoudige reiniging</b><br/>makkelijk schoonmaken met een vochtige doek</p>   |

Image 5.1: An overview of the table's key features, highlighting its robust construction, stable design, floor protection, and ease of maintenance.

## 6. MAINTENANCE

Maintaining your tectake Lasley coffee table is simple due to its smooth, easy-to-clean surfaces.

- **Regular Cleaning:** Wipe the table surface with a soft, damp cloth to remove dust and light spills.
- **Stubborn Stains:** For more stubborn marks, use a mild, non-abrasive cleaning agent specifically designed for furniture surfaces. Always test the cleaner on an inconspicuous area first.
- **Avoid Harsh Chemicals:** Do not use abrasive cleaners, solvents, or harsh chemicals, as these can damage the finish.
- **Protect from Heat and Moisture:** Always use coasters for drinks and hot pads for warm items to prevent rings and heat damage. Wipe up spills immediately.
- **Sunlight Exposure:** Avoid prolonged direct sunlight exposure to prevent fading or discoloration of the surface.





Image 6.1: Demonstration of cleaning the table's smooth surface with a damp cloth, highlighting its easy maintenance.

## 7. TROUBLESHOOTING

Here are solutions to common issues you might encounter:

- **Table is Wobbly:**
  - Ensure all screws connecting the base to the table top are securely tightened.
  - Check that the table is placed on a level surface. Adjust the felt pads if necessary to compensate for uneven floors.
- **Scratches on Floor:**
  - Verify that the felt pads are correctly attached to all contact points of the table base. Replace worn-out pads if needed.
- **Surface Stains:**
  - Refer to the "Maintenance" section for appropriate cleaning methods. Act quickly on spills to prevent permanent staining.

## 8. SPECIFICATIONS

| Feature                           | Detail                               |
|-----------------------------------|--------------------------------------|
| Brand                             | TecTake                              |
| Model Number                      | 406030                               |
| Color                             | Marble Look                          |
| Overall Dimensions (L x W x H)    | 120 x 60 x 35 cm                     |
| Table Base Dimensions (L x W x H) | 105 x 45 x 8.5 cm (approx.)          |
| Weight                            | 30.8 kg                              |
| Material                          | 100% MDF (Medium-Density Fibreboard) |
| Load Capacity                     | 45 kg                                |

**tectake**  
home

Productinformatie

**AFMETINGEN**  
  
**Totale afmetingen**  
120 x 60 x 35 cm  
  
**Voet**  
105 x 45 x 8,5 cm  
  
Afmetingen zijn bij benadering

**TECHNISCHE DETAILS**  
  
**Draagkracht** 45 kg  
**Gewicht** ca. 24 kg  
**Materiaal** 100% MDF

**INHOUD**  
  
**Salontafel**  
**Montagemateriaal**  
**Montagehandleiding**

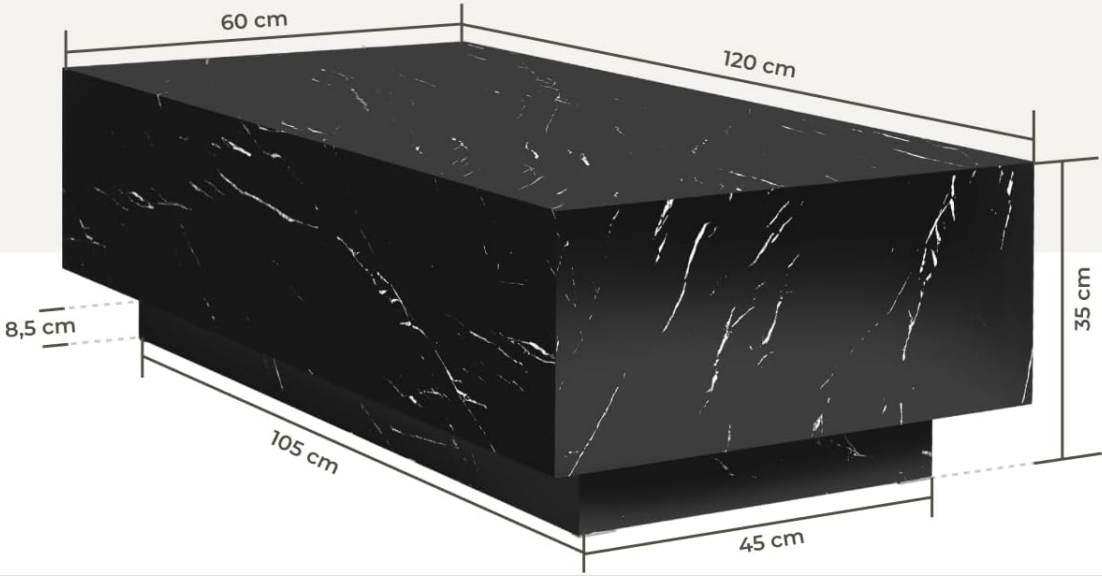


Image 8.1: Detailed dimensional drawing of the tectake Lasley coffee table, indicating its overall length, width, height, and the specific dimensions of its base.

## 9. WARRANTY AND SUPPORT

For any questions regarding your tectake Lasley coffee table, including assembly, missing parts, or product

defects, please contact the seller or manufacturer directly. Keep your purchase receipt as proof of purchase for warranty claims.

Information regarding spare parts availability is currently unavailable. Please contact customer support for assistance with specific component needs.