

Manuals.plus /

- › BDFFLY /
- › BDFFLY Wireless HDMI Transmitter Receiver Set DT276W-E User Manual

## BDFFLY DT276W-E

# BDFFLY Wireless HDMI Transmitter Receiver Set DT276W-E User Manual

Model: DT276W-E

## 1. INTRODUCTION

This manual provides detailed instructions for the setup, operation, and maintenance of your BDFFLY Wireless HDMI Transmitter Receiver Set, model DT276W-E. Please read this manual thoroughly before using the product to ensure proper functionality and safety. This device allows for wireless transmission of audio and video signals, supporting both mirroring and extended display modes.



Image: Overview of the BDFFLY Wireless HDMI Transmitter Receiver Set, highlighting its innovative features and flexible usage modes.

## 2. SAFETY INFORMATION

To prevent damage and ensure safe operation, please observe the following precautions:

- Do not expose the device to water, moisture, or extreme temperatures.
- Avoid dropping or subjecting the device to strong impacts.
- Do not attempt to disassemble or modify the device. Repairs should only be performed by qualified personnel.
- Ensure proper ventilation to prevent overheating.
- Use only the provided cables and power adapters.
- This product is not compatible with camera devices.
- The receiver unit is Japan Technical Conformity Certified (Certification Number: 219-249374), ensuring compliance with local radio wave laws.

---

### 3. PACKAGE CONTENTS

---

Please check that all items are present in your package:

- Wireless HDMI Transmitter (TX unit)
- Wireless HDMI Receiver (RX unit)
- USB Type-C Power Cable
- HDMI Extension Cable
- User Manual

---

### 4. PRODUCT OVERVIEW

---

The BDFFLY Wireless HDMI set consists of a Transmitter (TX) and a Receiver (RX) unit, designed for seamless wireless audio and video transmission.



Image: The BDFLY Wireless HDMI Transmitter (left) and Receiver (right) units.

#### **4.1. Transmitter (TX) Unit**

The TX unit connects to your source device (e.g., smartphone, tablet, laptop) via USB-C. It draws power directly from the connected device, eliminating the need for an external power supply for the transmitter. It supports Type-C charging for your source device while mirroring.

#### **4.2. Receiver (RX) Unit**

The RX unit connects to your display device (e.g., TV, projector, monitor) via HDMI. It requires external power, typically supplied via a USB Type-C cable connected to a power source or a USB port on your display.



Image: Device compatibility overview. The TX unit connects to phones, tablets, and laptops. The RX unit connects to TVs, displays, and projectors.

## 5. SETUP

The BDFLY Wireless HDMI set offers a plug-and-play experience. Follow these steps for initial setup:

### 5.1. Connecting the Receiver (RX) Unit

1. Connect the USB Type-C power cable to the RX unit and then to a power source (e.g., a USB wall adapter or a USB port on your display).
2. Plug the RX unit directly into an HDMI port on your display device (TV, monitor, projector). If space is limited, use the provided HDMI extension cable.

### 5.2. Connecting the Transmitter (TX) Unit

1. Plug the TX unit into the USB Type-C port of your source device (smartphone, tablet, laptop). The TX unit will draw power from your device.

Once both units are connected, the display should automatically show the content from your source device. No Wi-Fi connection or app installation is required for the standard TX+RX pairing mode.

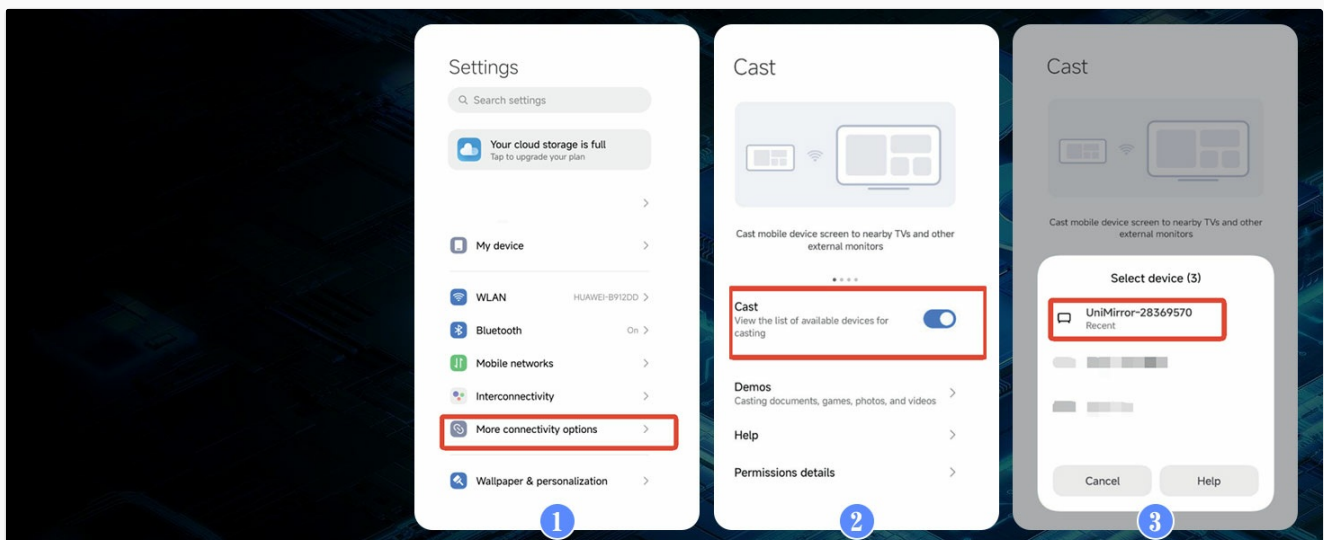


Image: Step-by-step visual guide for connecting the TX and RX units to your devices and display.

## 6. OPERATING MODES

---

The BDFFLY Wireless HDMI set supports two primary operating modes:

### 6.1. TX + RX Pairing Mode (Traditional Wireless HDMI)

In this mode, both the TX and RX units are used together. The TX unit connects to your source device, and the RX unit connects to your display. This mode offers direct, low-latency transmission without requiring Wi-Fi or additional software.

### 6.2. RX Unit Only Mode (Mirroring/Casting)

The RX unit can also function independently as a wireless display receiver. In this mode, you can mirror or cast content from your smartphone, tablet, or PC directly to the display by connecting only the RX unit to the display. This requires using your device's built-in screen mirroring or casting features.



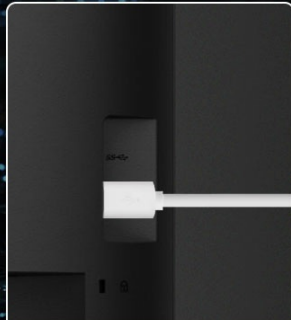
Image: Illustration of the two primary usage modes: using both TX and RX units, or using only the RX unit for direct mirroring from a smart device.

### 6.3. Mirroring and Extension Display

When using the TX+RX pairing mode with a compatible laptop or PC, you can choose between two display options:

- **Mirroring Mode:** Duplicates your source device's screen onto the larger display. Ideal for presentations or sharing content.
- **Extension Mode:** Extends your desktop, allowing you to have different content on each screen. Enhances productivity for multitasking.

## 送信機+受信機



**Step 1:**  
受信機の電源ケーブルをディスプレイに接続するか、5Vアダプターに繋ぎます



**Step 2:**  
受信機のHDMI延長ケーブルをディスプレイに接続します。



**Step 3:**  
スマートフォン、ノートパソコン、またはタブレットのType-Cポートに送信機を接続します。



**Step 4:**  
スマートフォン、ノートパソコン、またはタブレットのType-Cポートに送信機を接続します。

Image: Visual representation of Mirroring Mode (copying the screen) and Extension Mode (expanding the desktop) for enhanced workflow.

### 6.4. Performance and Range

The device utilizes 5GHz dual-band technology for stable and low-latency transmission, minimizing interference from other Wi-Fi networks. It supports Full HD 1080P at 60Hz and offers an ultra-low latency of approximately 0.06 seconds. The effective transmission range is up to 50 meters (approximately 164 feet) in line-of-sight conditions.

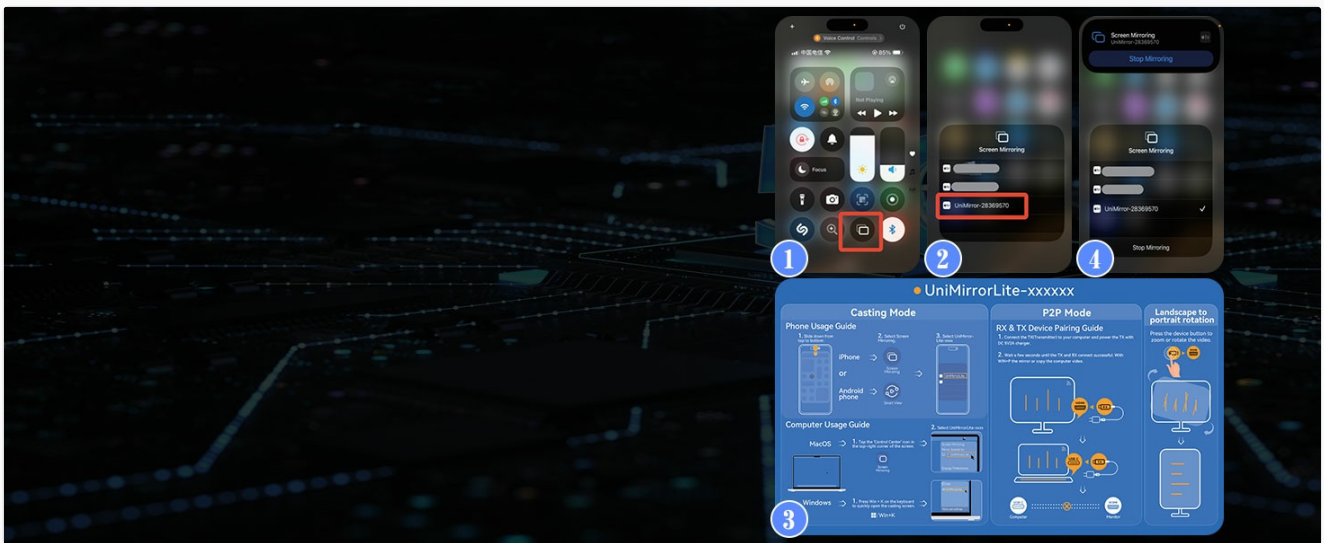


Image: Depiction of 5G dual-band technology ensuring ultra-fast response and zero delay, even in areas with weak signals.

## 拡張スクリーンモードをサポート



Image: Illustration of stable, long-distance transmission up to 30 meters, suitable for various environments like conference rooms.

## 6.5. Specific Device Mirroring Guides (RX Only Mode)

For mirroring using only the RX unit, follow your device's specific casting instructions:

### 6.5.1. iOS Devices (iPhone/iPad)

1. Swipe down from the top-right corner (or up from the bottom for older models) to open Control Center.
2. Tap 'Screen Mirroring'.
3. Select the RX unit (e.g., 'UniMirror-XXXXXX') from the list of available devices.

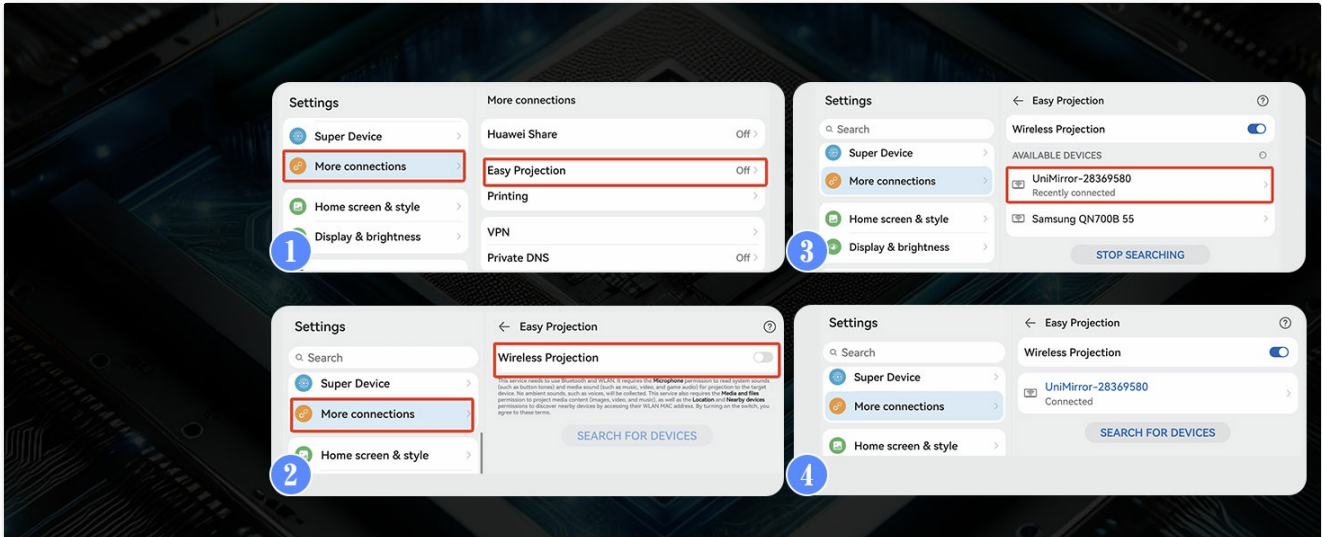


Image: Visual guide for initiating screen mirroring from an iOS device.

### 6.5.2. Android Devices

1. Go to 'Settings'.
2. Navigate to 'More connectivity options' or similar (e.g., 'Connected devices', 'Smart View', 'Cast').
3. Select 'Cast' or 'Wireless Projection'.
4. Choose the RX unit (e.g., 'UniMirror-XXXXXX') from the list.

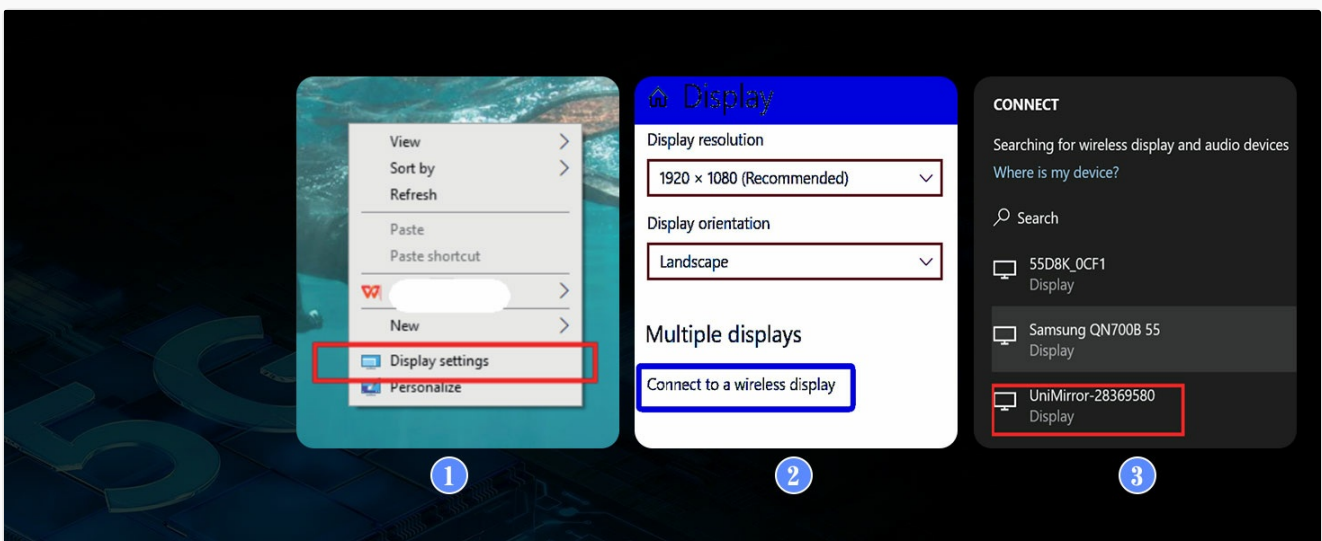


Image: Visual guide for initiating casting from an Android device.

### 6.5.3. Windows PCs

1. Right-click on your desktop and select 'Display settings'.

2. Scroll down and click 'Connect to a wireless display'.
3. Select the RX unit (e.g., 'UniMirror-XXXXXX') from the list of available devices.



Image: Visual guide for connecting to a wireless display from a Windows PC.

## 7. MAINTENANCE

---

To ensure the longevity and optimal performance of your BDFFLY Wireless HDMI set, follow these maintenance guidelines:

- **Cleaning:** Use a soft, dry cloth to clean the surfaces of the transmitter and receiver units. Do not use liquid cleaners or abrasive materials.
- **Storage:** When not in use, store the device in a cool, dry place away from direct sunlight and extreme temperatures.
- **Handling:** Handle the units and cables gently to avoid damage to connectors and internal components.

## 8. TROUBLESHOOTING

---

If you encounter issues with your BDFFLY Wireless HDMI set, please refer to the following common problems and solutions:

Problem	Possible Cause	Solution
No signal on display	RX unit not powered, incorrect HDMI input, TX unit not connected or powered (if applicable), device not mirroring/casting.	Ensure RX unit is powered and connected to HDMI. Select correct HDMI input on display. Ensure TX unit is firmly connected to source device. Verify source device's mirroring/casting function is active.
Video lag or stuttering	Interference, distance too great, obstacles, low power to RX unit.	Reduce distance between TX/RX. Remove obstacles. Ensure RX unit has stable power. Minimize other wireless device usage nearby.
No audio	Display audio settings, source device audio settings, cable issues.	Check audio output settings on your display and source device. Ensure volume is not muted.
Device overheating	Poor ventilation, prolonged heavy use.	Ensure units are in a well-ventilated area. Disconnect and allow to cool if excessively hot.
Cannot connect in RX Only Mode	Incorrect device settings, RX unit not discoverable.	Ensure RX unit is powered on and displaying its standby screen. Double-check your device's mirroring/casting settings and ensure it's searching for wireless displays.

## 9. SPECIFICATIONS

Feature	Detail
Model Number	DT276W-E
Brand	BDFFLY
Connectivity Type	Wireless HDMI
Supported Resolution	Full HD 1080P @ 60Hz
Wireless Frequency	2.4G / 5G Dual-band
Transmission Latency	Ultra-low latency (approx. 0.06 seconds)
Max Wireless Range	Up to 50 meters (line-of-sight)
TX Power Supply	Powered by source device via USB-C
RX Power Supply	External via USB-C
Supported Modes	Mirroring, Extension
Product Dimensions	12.5 x 9.7 x 2.2 cm
Product Weight	80 g
Japan Technical Conformity Certification	Certified (Number: 219-249374)

## 10. WARRANTY AND SUPPORT

---

BDFFLY is committed to providing high-quality products and customer satisfaction.

### 10.1. Warranty Information

If you experience any connection issues with the product, a 90-day full refund guarantee is offered from the date of purchase. Please retain your proof of purchase for warranty claims.

### 10.2. Customer Support

For further assistance, technical support, or warranty inquiries, please contact BDFFLY customer service through the retailer where you purchased the product or visit the official BDFFLY website for contact information.

---