

Manuals+

[Q & A](#) | [Deep Search](#) | [Upload](#)

manuals.plus /

› [Uckazy](#) /

› [Uckazy 15.8 Inch Android Auto Radio for BMW 5 & 7 Series F10 F11 F01 CIC \(2011-2012\) - Instruction Manual](#)

Uckazy 5 Series & 7 Series CIC

Uckazy 15.8 Inch Android Auto Radio for BMW 5 & 7 Series F10 F11 F01 CIC (2011-2012) - Instruction Manual

Brand: Uckazy | **Model:** 5 Series & 7 Series CIC

1. INTRODUCTION

This manual provides detailed instructions for the installation, operation, and maintenance of your Uckazy 15.8 Inch Android Auto Radio. This device is designed to upgrade the car stereo system in specific BMW 5 and 7 Series models, enhancing your in-car experience with modern features while retaining original vehicle functionalities.

1.1. Vehicle Compatibility

This unit is compatible with BMW 5 Series F10, F11, F01 CIC models manufactured between 2011 and 2012. It supports 520i, 525i, and 528i variants. Please ensure your vehicle has the CIC system. If you are uncertain about your vehicle's system compatibility, consult a professional or contact Uckazy support before installation.

Compatible Models & Year

For BMW 5 Series F10 (2011-2012) with **CIC** system

For BMW 7 Series F01 F02 (2011-2012) with **CIC** system

Note :

Before you purchase , please make sure your car system is CIC system firstly .If you can't make sure by yourself, you can get help from us.

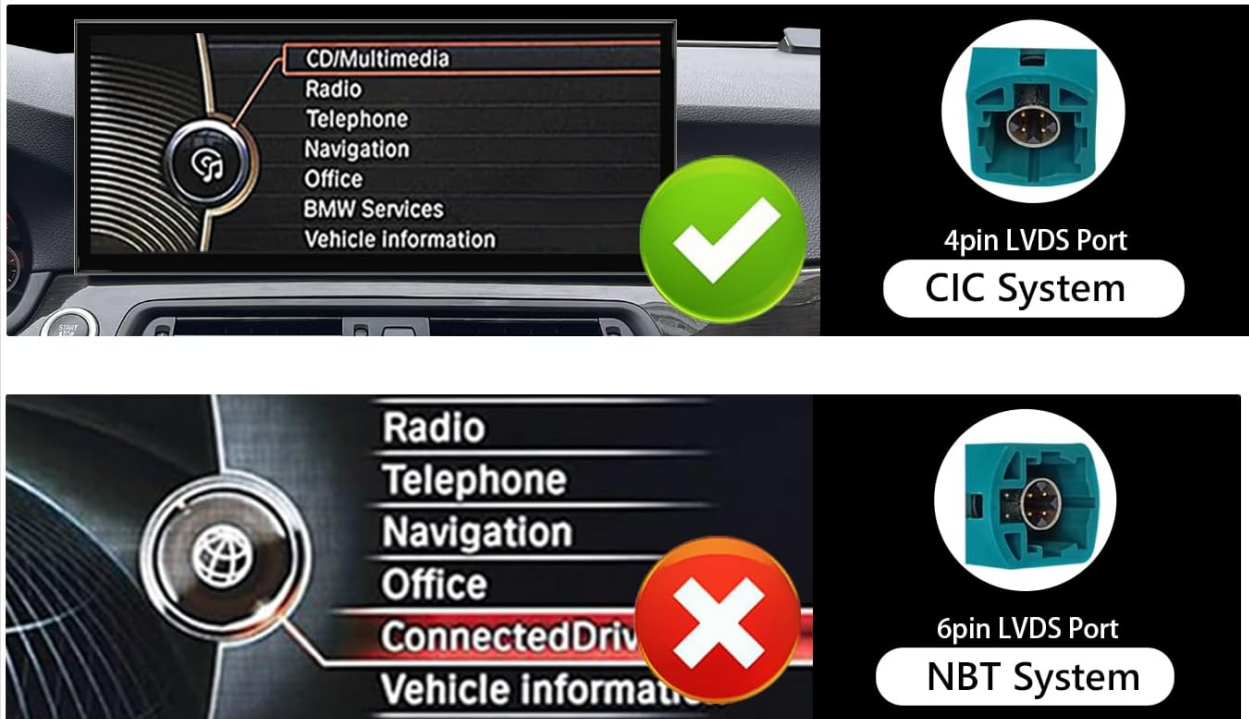


Figure 1.1: Compatible BMW models and years with CIC system. Note the 4-pin LVDS port for CIC systems, contrasting with the incompatible 6-pin port for NBT systems.

2. PRODUCT FEATURES

The Uckazy 15.8 Inch Android Auto Radio offers a range of features designed to integrate seamlessly with your BMW's existing system while introducing advanced functionalities:

- **Display:** 15.8-inch (1920*720) IN-CELL screen with full lamination technology for enhanced transparency and reduced reflection. Constructed from zinc alloy for high strength and wear resistance.
- **Dual System:** One-click switching between the Linux system and the original car system. Retains original car radio, amplifier function, steering wheel control, iDrive controller, display speed, fuel level, oil pressure, safety warnings, and original reverse camera.
- **Connectivity:** Supports wireless (wired) Apple CarPlay, wireless (wired) Android Auto, wireless MirrorLink for iOS and Android phones, Bluetooth 5.0, and Wi-Fi.
- **Audio:** Built-in Digital Signal Processor (DSP) with 16 EQ segments for customizable audio effects.
- **Navigation & Voice Control:** Access map navigation, phone contacts, email, notifications, and music through voice assistants like Siri or Google Voice Assistant.

Product Features

It is to replace original car screen with Linux System 15.8 Inch 1920*720 resolution car touchscreen, not only keep the original OEM system, but also add wireless Carplay, wireless Android Auto and wireless mirrorlink Functions,

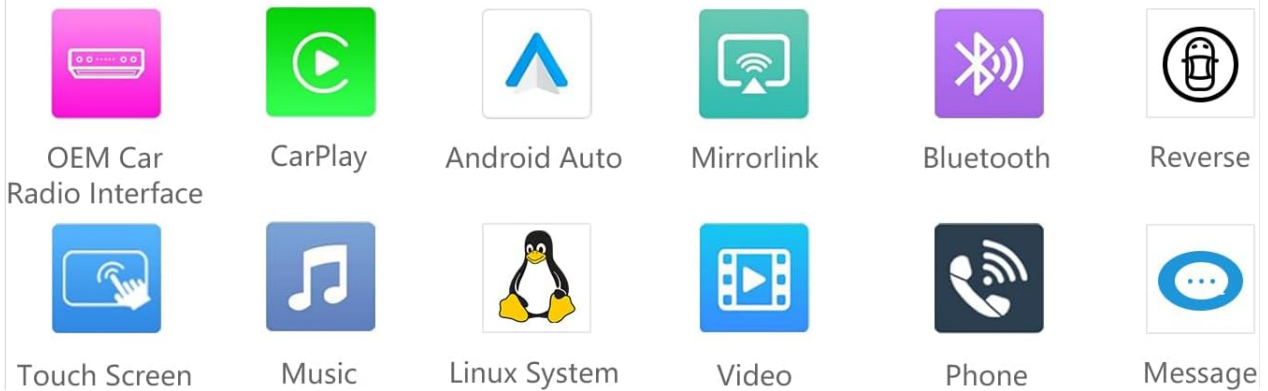


Figure 2.1: Overview of the product's key features and supported functionalities.

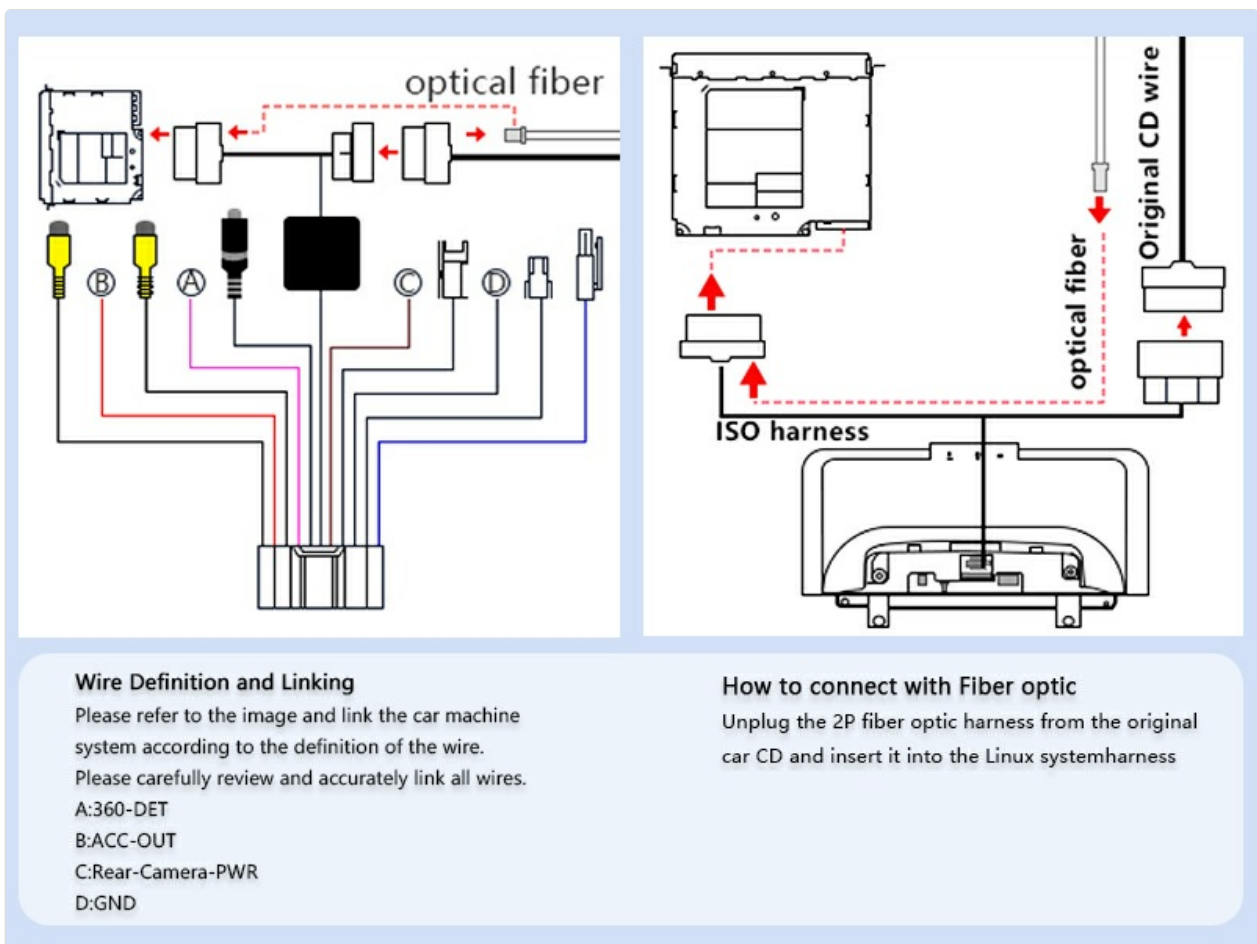


Figure 2.2: Seamless switching between the original car system and the new Linux system.

3. SETUP & INSTALLATION

The installation process involves carefully disassembling parts of your car's dashboard, connecting the new unit, and reassembling. It is recommended to seek professional installation if you are not comfortable with automotive electronics.

3.1. Installation Process Overview

The following video demonstrates the installation steps for the Uckazy 15.8 Inch Android Auto Radio in a BMW CIC system. Please follow the instructions carefully.

Your browser does not support the video tag.

Video 3.1: Installation process for the Uckazy 15.8-inch ultra-narrow BMW CarPlay unit in a CIC system. This video guides you through prying open dashboard panels, disconnecting original cables, removing screws, connecting the new unit's cables, and reassembling the components.

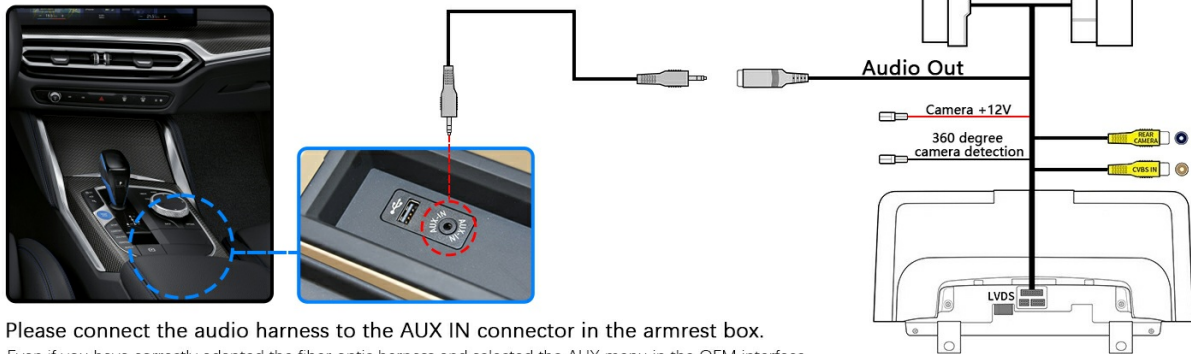
3.2. Key Installation Steps

1. Use an installation tool to carefully pry open the dashboard panels surrounding the original display and radio unit.
2. Disconnect and pull out the cables from the original components.
3. Remove the screws securing the original display and radio unit.
4. Connect the new unit's cables to the corresponding ports. Ensure all connections are secure.
5. Properly route and place all cables to avoid pinching or interference.
6. Plug in the AUX cable into the vehicle's AUX-IN port, typically found in the manual gear position or

passenger side storage box.

7. Reinstall the original vehicle parts and screws in reverse order of removal. Do not miss any screws.

Some models have direct AUX access to the audio amplifier, and you must plug the audio connection cable (included in the package accessory) into the AUX socket in the armrest compartment in order to access the Linux audio.



Please connect the audio harness to the AUX IN connector in the armrest box. Even if you have correctly adapted the fiber optic harness and selected the AUX menu in the OEM interface, you may still not be able to get sound from CarPlay or Android Auto. Be sure to connect the audio cable properly between the AUX IN and AUDIO OUT of the armrest center box.

Figure 3.2: Wire definition and linking diagram. Carefully review and accurately link all wires as shown.

Please Follow The Wiring Diagram To Properly Connect The Reverse Camera Equipped With The Product.

When connecting to the reversing camera, please follow the diagram for wiring

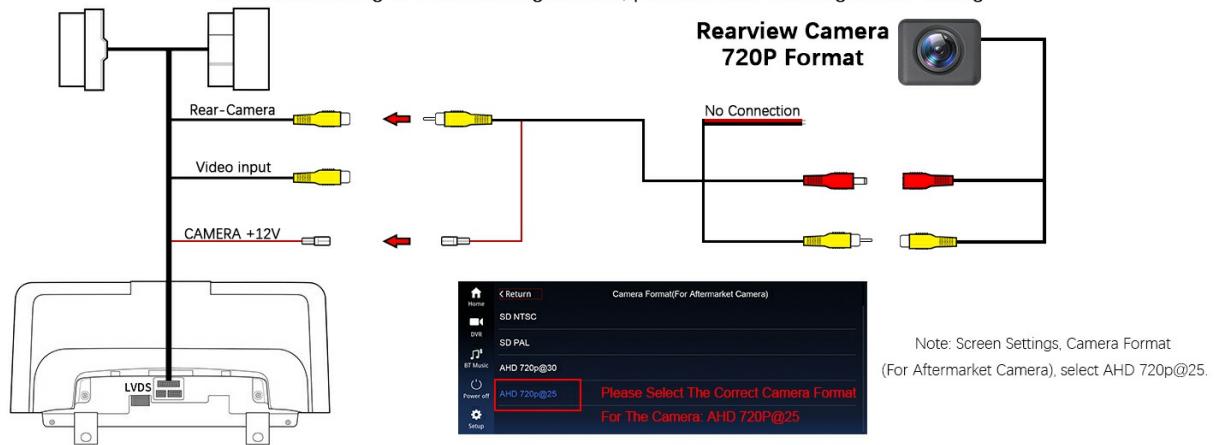


Figure 3.3: Fiber optic connection guide. Unplug the 2P fiber optic harness from the original car CD and insert it into the Linux system harness.

Day And Night Mode

Automatic light sensitivity adjusts the day and night mode according to your car's original headlights

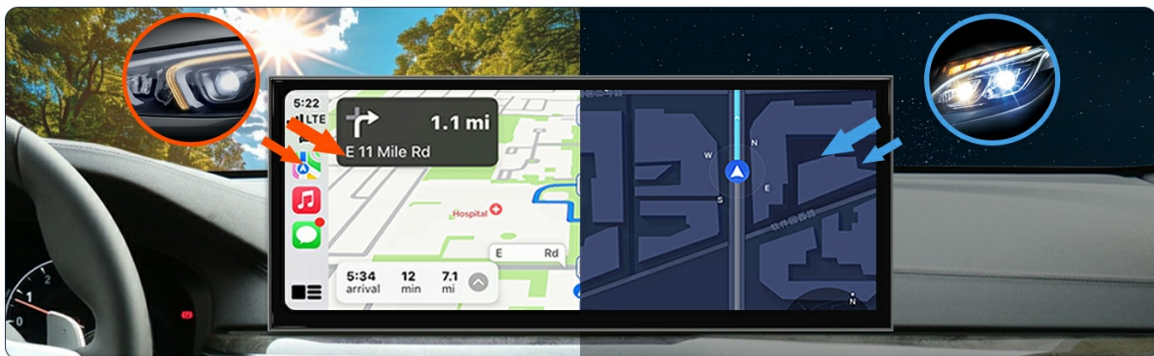


Figure 3.4: Connecting the AUX cable and adjusting AUX settings. Ensure the AUX cable is plugged into the stock AUX port and the 'Auto Switch to AUX' setting is turned off in the car's settings.

4. OPERATING INSTRUCTIONS

Once installed, the Uckazy Android Auto Radio provides an intuitive interface for various functions. This section covers basic operation and settings.

4.1. Connecting to the Linux System

The following video demonstrates how to link sound in the Linux system, including Bluetooth pairing and accessing various CarPlay functions.

Your browser does not support the video tag.

Video 4.1: Guide on how to link sound in the Linux system. This video shows the steps to connect your phone via Bluetooth, access CarPlay features like navigation, phone, music, and messages, and adjust system settings.

4.2. Wireless CarPlay and Android Auto

The unit supports wireless Apple CarPlay and Android Auto. To connect:

1. Ensure Bluetooth is enabled on your smartphone.
2. On the unit's screen, navigate to the CarPlay or Android Auto section and follow the on-screen prompts to pair your device.
3. Allow all necessary permissions on your phone for a successful connection.

Support Wireless Carplay Android Auto

Allows Stereo to use Various Applications Such as Navigation
Music in driving Situations

 Wireless carplay

 Wireless Android Auto

Figure 4.2: Wireless CarPlay and Android Auto interfaces on the display.

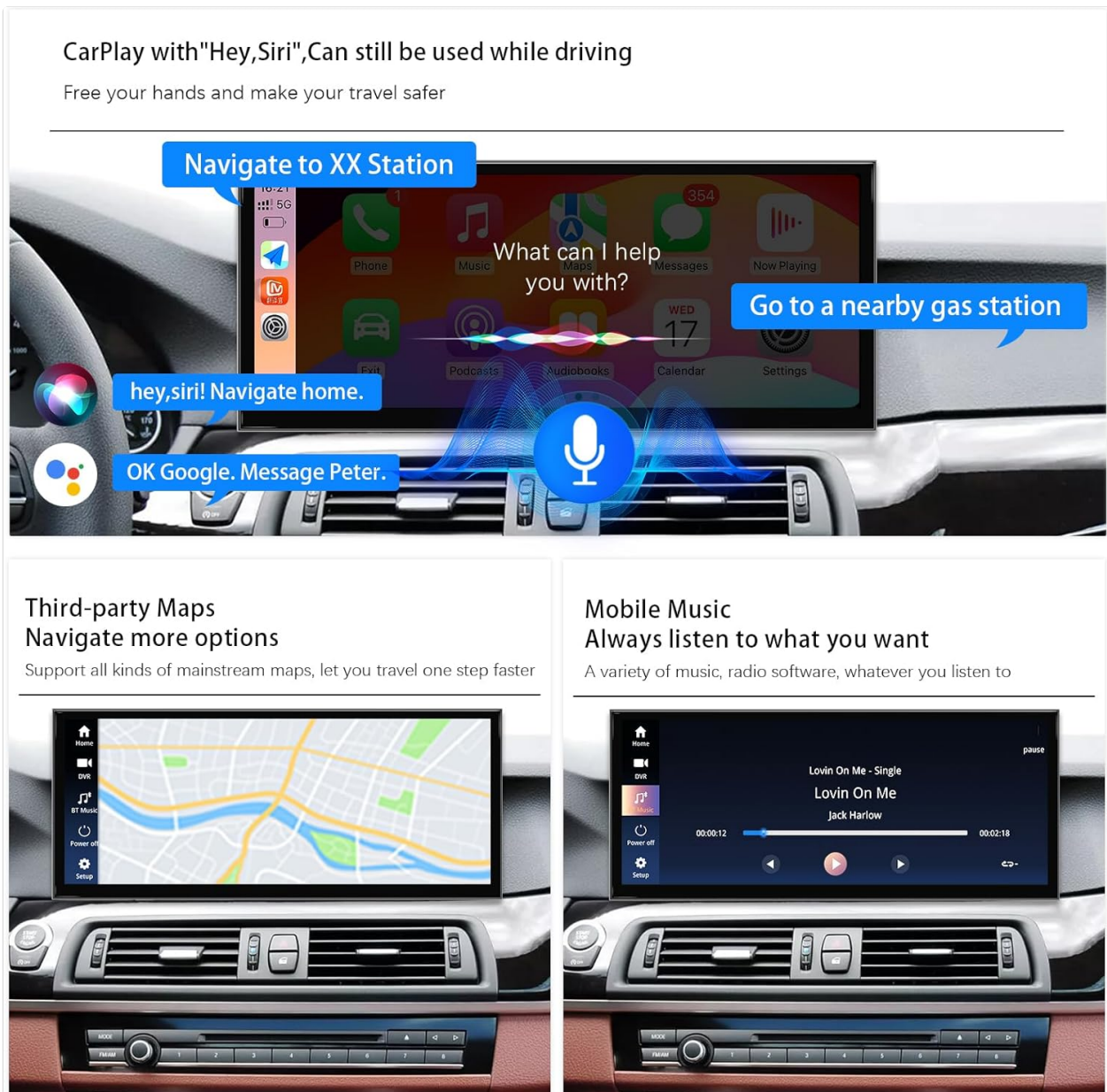


Figure 4.3: CarPlay features including voice-activated navigation and mobile music playback.

4.3. Day and Night Mode

The system features an automatic light sensitivity adjustment that adapts the display's day and night mode according to your car's original headlights, ensuring optimal visibility at all times.

Automatic switch to AUX



Refer to image setup> car settings>auto switch to aux>select harman or alpine .

Manual AUX Setting Method



1: Go to "Main menu" and select "Multimedia"



2:Then select "External devices"



3:We long press the number key "8", when we hear the tone ringing, we are set!



4:Press 8 every time before entering the new system, You'll get the carPlay sound.

Figure 4.4: Automatic Day and Night Mode adjustment.

5. CAMERA FUNCTIONALITY

The unit supports both OEM reversing cameras and aftermarket reverse/front view cameras.

5.1. Camera Support

The system is compatible with OEM reversing camera parking radar and supports aftermarket reverse cameras and front view camera DVR (CVBS input).

Camera Function

Compatible OEM Reversing camera parking radar
Support aftermarket reverse camera
Support front view camera DVR (CVBS input)

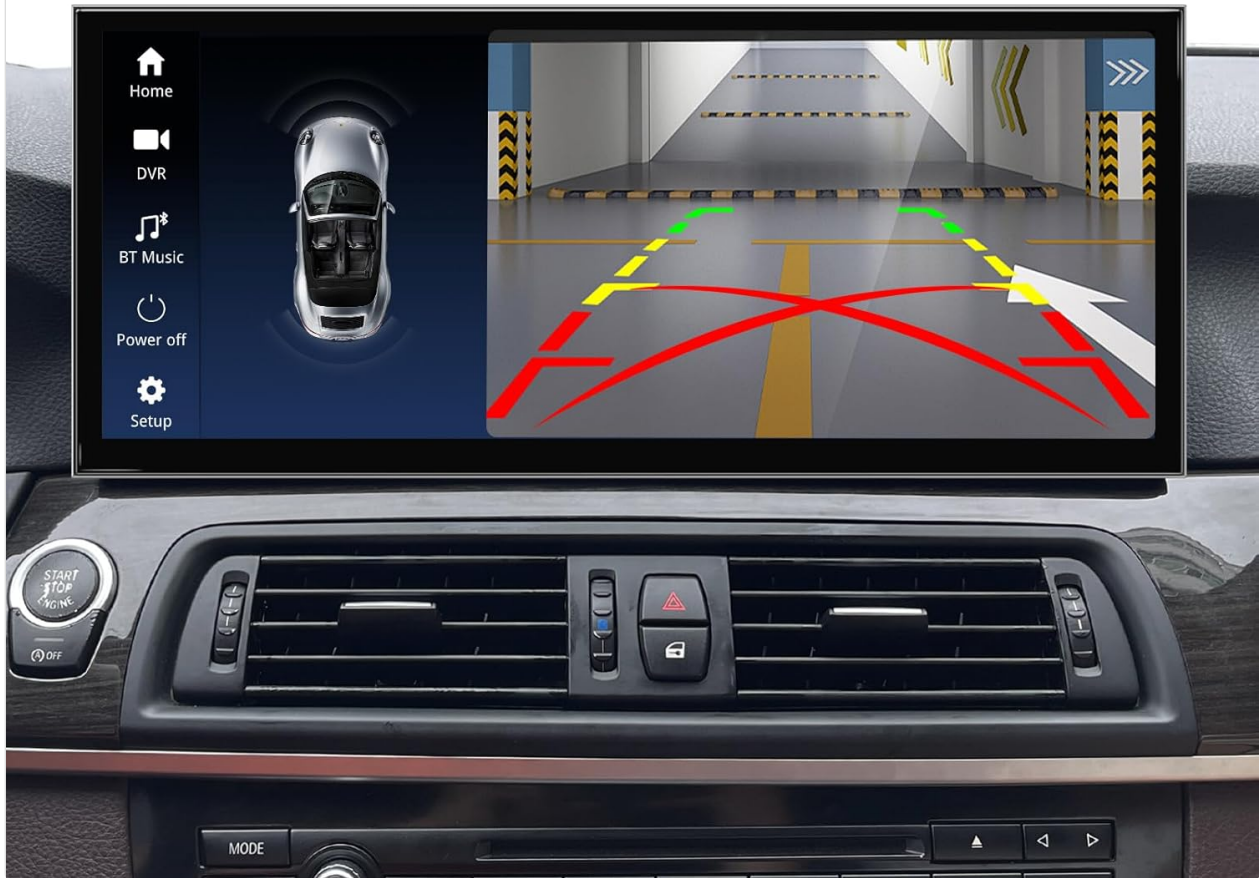


Figure 5.1: Camera function display with parking assistance.

5.2. Reverse Camera Wiring

When connecting a reverse camera, follow the provided wiring diagram carefully. Ensure the camera format is correctly selected in the settings (e.g., AHD 720p@25 for aftermarket cameras).



Figure 5.2: Wiring diagram for reverse camera connection and camera format settings.

6. AUDIO & CONNECTIVITY

6.1. Digital Sound Processor (DSP)

The unit includes a built-in DSP with 16 EQ segments, allowing you to fine-tune your audio experience. Adjust reverberation, equalization, compression, and other audio effects to achieve your preferred sound quality.



Figure 6.1: Built-in DSP interface for audio customization.

6.2. AUX Audio Connection

For optimal audio output, ensure the AUX cable is correctly connected. If you experience distorted sound (noise) from CarPlay or Android Auto, connect the AB cable as indicated in the wiring instructions.



Figure 6.2: Manual AUX setting method for audio output.

Technical Support

We investigated the returns in recent years and found that 92% percent of the customers returned the car because they can't set it up or set it up wrongly and wrong link cable. When you encounter problems such as installation, sound, carplay, original car UI doesn't display, please contact us in time and the technician will give you the solution. Please contact us, thank you!

STEP 1

In Stock

[Add to Cart](#)

[Buy Now](#)

Ships from **Amazon**

Sold by **Uckzay Factory Outlet**

Returns **30-day refund/replacement**

Payment **Secure transaction**

STEP 2

Uckzay Factory Outlet

Visit the Uckzay Factory Outlet storefront

★★★★★ 100% positive lifetime (2 total ratings)

About Seller

Shenzhen Yukaz Electronics Co., Ltd. was established in 2021, but our shareholders have been focusing on automotive electronic products for 15 years. Our company has always adhered to the principle of "quality first, customer first, and high-quality service." The company has always adhered to the principle of "keeping promises and abiding by contracts". With high-quality products, good reputation, and excellent service, our products sell well in Southeast Asia, Europe, the Middle East, South Ame...

[Have a question for Uckzay Factory Outlet?](#)

[Ask a question](#)

Figure 6.3: Wired CarPlay/Android Auto connection and noise reduction solution.

7. DISPLAY SETTINGS

The 15.8-inch display offers a clear and vibrant viewing experience. Proper configuration of display settings is crucial for optimal performance.

7.1. Screen Resolution

The unit features a 1920x720 resolution screen. It is important to set the correct OEM screen resolution in the unit's settings to ensure proper display of original car information. Incorrect settings may lead to display issues.

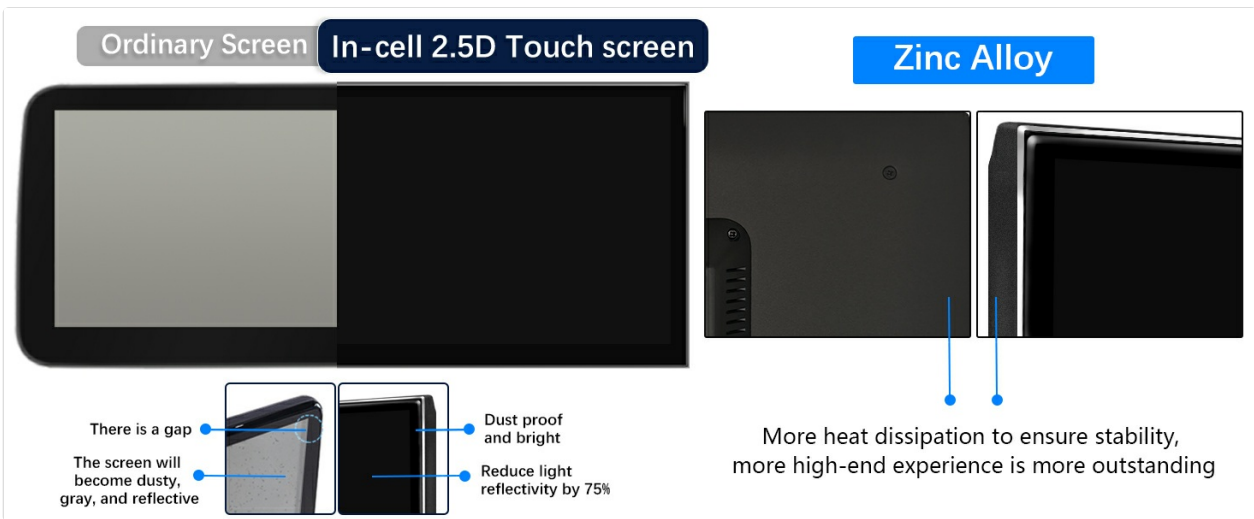


Figure 7.1: Setting the OEM screen resolution.

7.2. Screen Technology

The display utilizes IN-CELL screen technology with full lamination, which eliminates air gaps between layers, resulting in a more transparent display and a 75% reduction in reflection. The zinc alloy material provides durability and improved heat dissipation.

How to Set the OEM Resolution?

Refer to image setup>car settings>original car screen resolution>select the correct resolution

Please select the correct resolution for OEM displays in the settings, otherwise OEM car information may not be displayed correctly.

If you are unsure of the resolution, please try each one.

How to Set the OEM cameras?

Refer to image setup>car settings>ReversingSettings>Camera Type> Original or aftermarket

Please select the correct option, otherwise the reverse camera will not work

Figure 7.2: Advantages of In-cell 2.5D Touch screen with Zinc Alloy construction.

8. SPECIFICATIONS

Feature	Description
---------	-------------

Brand	Uckazy
Connectivity Technology	Bluetooth
Controller Type	iPhone App
Special Feature	Touchscreen
Compatible Devices	Smartphone
Audio Output Mode	Stereo
Surround Sound Channel Configuration	5.1
Video Encoding	H.264, H.265/HEVC, MPEG-4
Number of Channels	2
Control Method	Touch
Audio Output Type	Speakers
Wireless Technology	Bluetooth

9. TROUBLESHOOTING

This section addresses common issues and provides solutions.

9.1. Firmware or MCU Update

If you are looking for firmware or MCU updates, please contact Uckazy customer support directly. Update links are not publicly provided and require specific guidance to ensure compatibility and proper installation.

9.2. Sound Distortion/Noise

If you experience distorted sound or noise when using CarPlay or Android Auto, ensure the AB cable is correctly connected as per the installation instructions (refer to Figure 6.3).

9.3. Installation or Operation Issues

Many issues can arise from incorrect installation or wiring. Double-check all cable connections and ensure they are securely plugged in. Verify that the correct OEM screen resolution is selected in the settings (refer to Figure 7.1).

10. WARRANTY & SUPPORT

Uckazy is committed to providing quality products and support.

10.1. Return Policy

The product is eligible for a 30-day refund or replacement policy. Please refer to the retailer's specific terms and conditions for details.

10.2. Technical Support

If you encounter any problems during the installation process, or if the sound, CarPlay, or original car UI does

not display correctly, please contact Uckazy customer support. Our engineers are available to assist you with solutions.

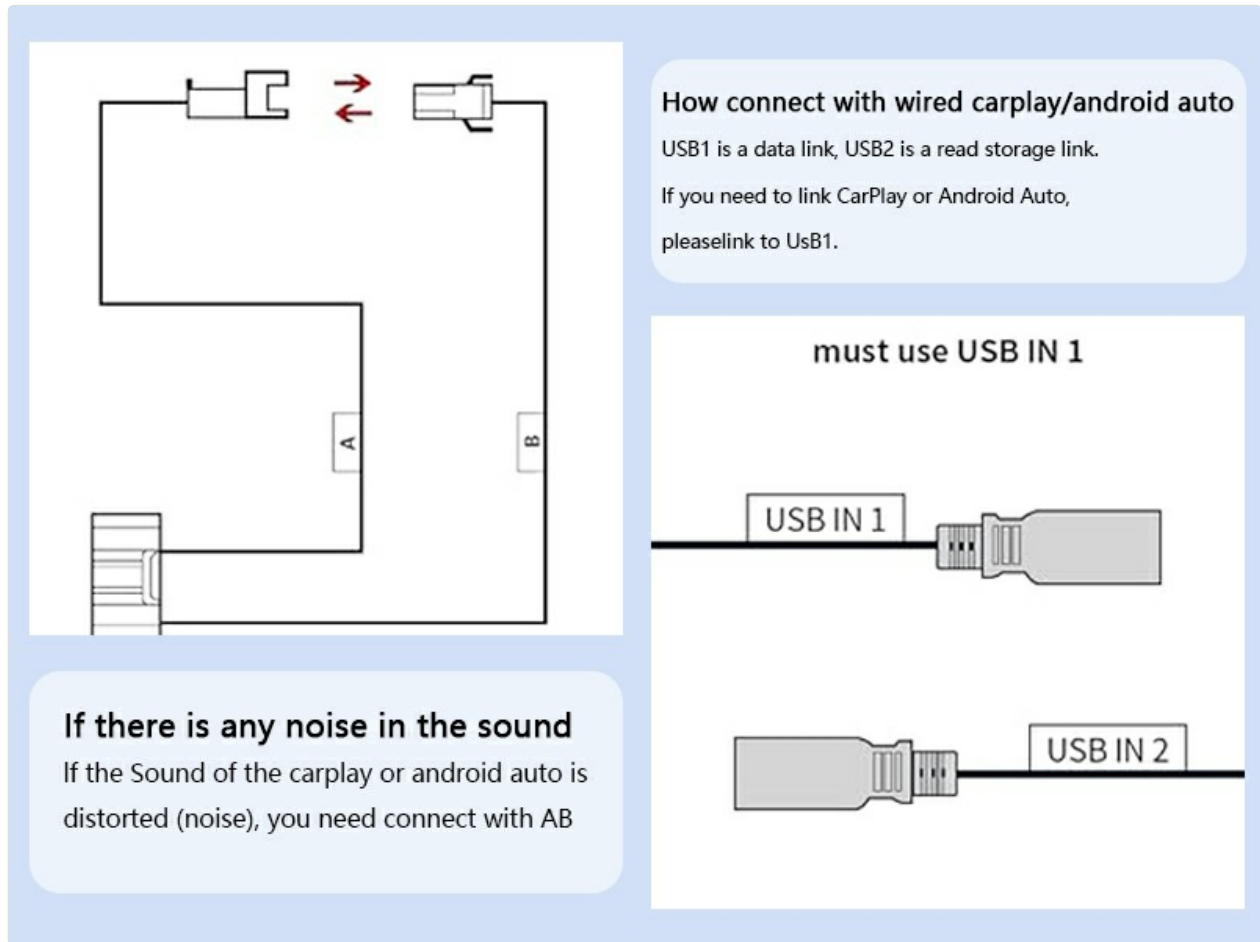


Figure 10.1: Information on contacting technical support for assistance.