

Manuals+

[Q & A](#) | [Deep Search](#) | [Upload](#)

manuals.plus /

- › [Ranein](#) /
- › [Ranein GEN II 13kW 240V Electric Tankless Water Heater User Manual](#)

Ranein RE13K

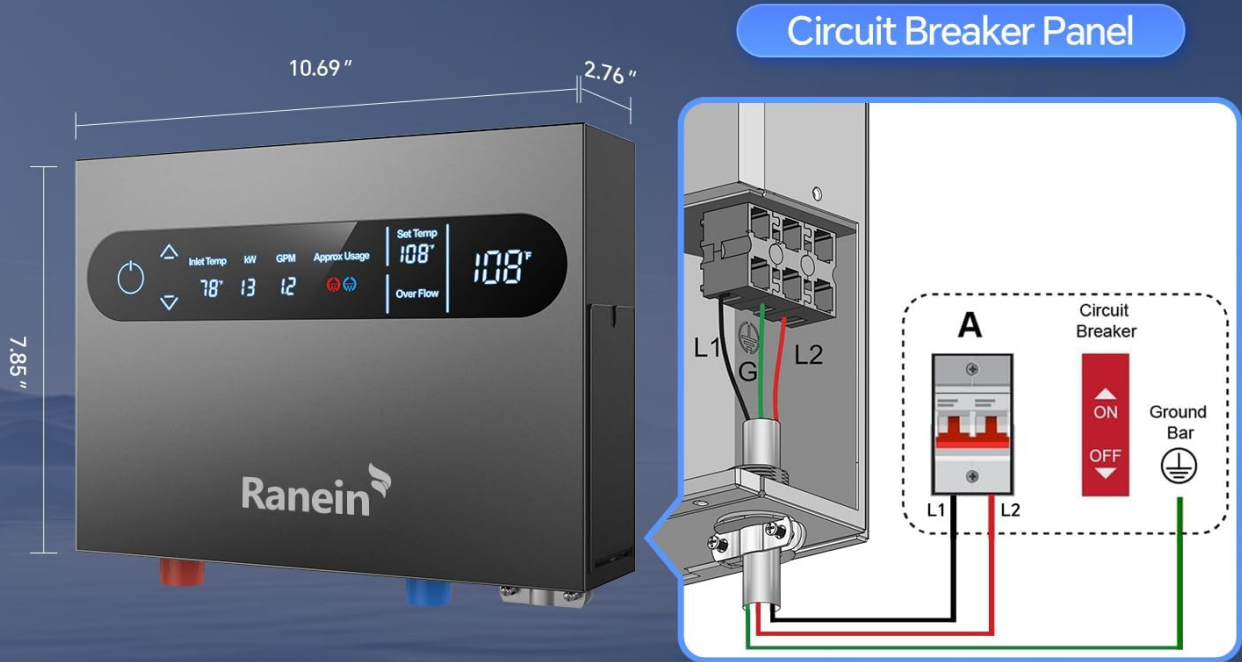
Ranein GEN II 13kW 240V Electric Tankless Water Heater User Manual

Model: RE13K

1. INTRODUCTION

This manual provides essential information for the safe and efficient installation, operation, and maintenance of your Ranein GEN II 13kW 240V Electric Tankless Water Heater, Model RE13K. Please read all instructions carefully before installation and use. Retain this manual for future reference.

Installation Diagram



Professional installation recommended. Consult an electrician prior to purchase.
No need to remove the machine casing for installation.

Requirements:

Mode	KW	Voltage	Maximum Amp	Breaker	Cable Required	Pipe Fitting	Weight
RE13K	13kW	240V/40A	54.17 A	1×60 AMP	8 AWG	1/2" NPT	6.6 lbs

Image: The Ranein 13kW Electric Tankless Water Heater, Model RE13K, featuring its digital display and compact design.

2. SAFETY INFORMATION

Important Safety Instructions:

- This unit must be installed by a qualified electrician or plumber in accordance with all federal, state, and local electrical and plumbing codes.
- The water heater must be connected to a reliable earth connection at all times.
- Ensure all circuit breakers and disconnect switches are OFF before installation and maintenance.
- DO NOT install this unit in a location where it may be subject to freezing temperatures, as this can cause severe damage not covered under your warranty.
- The wall for installation must be strong enough to support four times the weight of the water heater.
- To avoid damage, the unit needs to be kept dry. Keep unit away from direct sunlight, moisture, dust, steam, and other liquids.

- The unit is not installed in places with water leaks (such as under air conditioning lines or water pipes).
- Be sure that the water heater is out of the reach of children so they cannot adjust the temperature knob.
- The outlet water pipe can get very hot; make sure that the outlet water pipe is out of the reach of children.
- The water heater's heating elements are separated from water to prevent scale buildup.
- Features leakage protection, overheat safeguards, and automatic shutdown for peace of mind.

3. SETUP AND INSTALLATION

Professional installation is recommended for safety and optimal performance. Refer to the video and diagrams below for guidance.

Your browser does not support the video tag.

Video: Official Ranein installation guide for the 8/13kW 240V Electric Tankless Water Heater. This video demonstrates the steps for mounting the unit and connecting water lines.

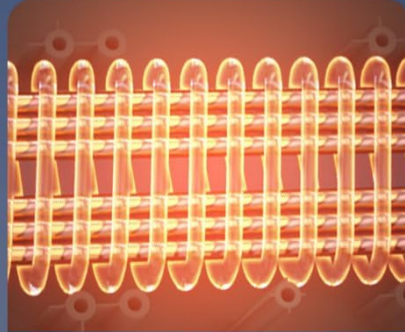
3.1 Mounting the Unit

Use the provided template to mark drilling points on the wall. Ensure the wall can support the unit's weight. Drill holes, insert wall anchors, and secure the unit.

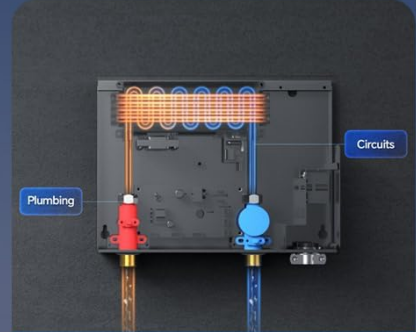
Instant Heating Without Waiting



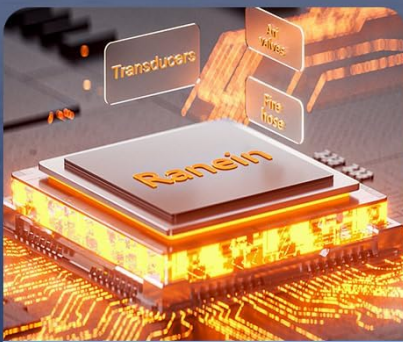
Instant hot
water supply



13kW power
fast heating



Water and electricity
separation heating



Upgraded constant
temperature control



Temperature
visualization selection



Safety protection
against leakage

Image: Installation diagram detailing the unit's dimensions (10.7"W x 7.9"H x 2.8"D) and recommended mounting points for secure wall attachment.

3.2 Electrical Requirements

The 13kW model requires a 240V power supply and a 1 x 60 amp circuit breaker. Use 8 AWG cable for wiring. Consult the table below for detailed power requirements based on different models.

Cable Gauge & Power Requirements

8AWG Thickness
(Roughly equivalent to two quarters)



Quarter x 2(0.13")

6AWG Thickness
(Thicker than two quarters)



Power (Output)	Cable Required	Breaker
4.5kW / 120V	8AWG	40A
8kW / 240V	8AWG	40A
13kW / 240V	6AWG	60A
18kW / 240V	2x8AWG	40A*2
27kW / 240V	3x8AWG	40A*3

Image: Table illustrating cable gauge and power requirements for different Ranein tankless water heater models, including 13kW 240V requiring 60A breaker and 8 AWG cable.

3.3 Water Connections

Connect the water lines to the 1/2" NPT water connections. Ensure all connections are secure and leak-free. The unit is designed for water and electricity separation for enhanced safety.

Electro-hydraulic Separation

No limescale, keep fresh hot water.

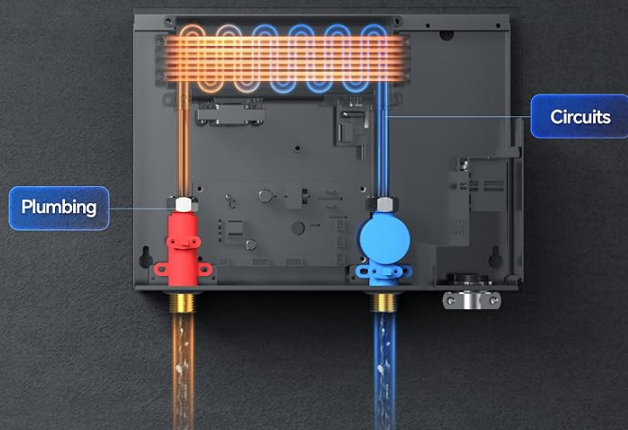


Image: Electro-hydraulic separation diagram, showing how water and electrical components are isolated to prevent limescale buildup and ensure safety.

4. OPERATING INSTRUCTIONS

The water heater features an LED display and knob controls for easy operation.

4.1 Power On/Off

Press the power button on the unit's display to turn the water heater on or off.

4.2 Temperature Control

Adjust the temperature from 86°F to 131°F in 1°F increments using the up and down arrows on the control panel. The LED display will show the inlet temperature, set temperature, power (kW), and approximate GPM usage.

Multi-data Display



Image: Multi-data LED display showing inlet temperature, power consumption in kW, GPM, approximate usage, and set temperature. Controls include ON/OFF, Increase, and Decrease buttons.

4.3 Instant Hot Water

The unit provides instant hot water on demand, eliminating the need for preheating and ensuring a continuous supply.

24-Hour Uninterrupted Hot Water

The electric water heater tankless supports long-term use and intelligent constant temperature.



Image: Graphic illustrating the Ranein water heater's capability to provide 24-hour uninterrupted hot water, emphasizing its instant heating feature.

5. MAINTENANCE

The Ranein tankless water heater is designed for minimal maintenance due to its non-scaling heating elements. No special maintenance is typically required.

- Regularly inspect water connections for any signs of leaks.
- Keep the exterior of the unit clean and free from dust.
- Ensure proper ventilation around the unit.

6. TROUBLESHOOTING

If you experience issues with your Ranein tankless water heater, please refer to the following general guidelines. For specific error codes or persistent problems, contact customer support.

- **No Hot Water:** Check if the unit is powered on and if the circuit breaker is tripped. Ensure water supply is open.
- **Insufficient Hot Water:** Verify the set temperature. Ensure the incoming water temperature is within the unit's operating range. Check for proper flow rate.
- **Leakage:** Immediately turn off the water supply and power to the unit. Inspect all connections for tightness. Contact a qualified plumber if the leak persists.
- **Display Not Working:** Check power supply and circuit breaker. If the issue continues, contact customer support.

7. SPECIFICATIONS

Feature	Specification
---------	---------------

Feature	Specification
Brand	Ranein
Model Number	RE13K
Power Source	Electric
Power Rating	13 kW
Voltage	240V
Circuit Breaker Required	1 x 60 Amp
Cable Required	8 AWG
Product Dimensions (W x H x D)	10.7" x 7.9" x 2.8"
Water Connection	1/2" NPT
Flow Rate	Up to 3.1 GPM
Temperature Range	86°F to 131°F
Special Feature	LED Display
Color	Gray
Weight	6.6 lbs

8. WARRANTY AND SUPPORT

Ranein is committed to providing reliable products and excellent customer service.

8.1 Warranty Information

Your Ranein water heater comes with a **2-year warranty** against manufacturing defects. Please retain your proof of purchase for warranty claims.

8.2 Customer Support

For comprehensive product problem-solving, installation guidance, or product consultation, please contact our professional after-sales team:


- **Email:** service@ranein.net
- **Phone (US):** (424)-452-2630



Best Partner For your Home Improvement.

 2-year

 Professional after-sales team

 Provides installation guidance

 Provide product consultation

 ranein.net

 (424)452-2630

Image: Ranein Service Support details, including contact email and phone number, and a mention of the 2-year warranty.