



[Manuals.plus](#) /

> [ATTOP](#) /

> [ATTOP 30 Inch Black Workstation Undermount Kitchen Sink User Manual](#)

ATTOP WSBK-3019-UM

ATTOP 30 Inch Black Workstation Undermount Kitchen Sink User Manual

Model: WSBK-3019-UM

[Introduction](#) [Safety Instructions](#) [Package Contents](#) [Setup & Installation](#) [Operation](#) [Maintenance](#) [Troubleshooting](#) [Specifications](#) [Warranty & Support](#)

1. INTRODUCTION

Thank you for choosing the ATTOP 30 Inch Black Workstation Undermount Kitchen Sink. This manual provides essential information for the safe installation, operation, and maintenance of your new kitchen sink. Please read these instructions thoroughly before installation and retain them for future reference.

This workstation sink is designed for efficiency and durability, featuring a nano black stainless steel finish and integrated accessories to enhance your kitchen experience.

2. SAFETY INSTRUCTIONS

Observe the following safety precautions during installation and use:

- Always wear appropriate personal protective equipment (PPE) such as safety glasses and gloves during installation.
- Ensure all plumbing connections are secure and watertight to prevent leaks.
- If you are unsure about any installation steps, consult a qualified plumber or professional installer.
- Do not use abrasive cleaners or harsh chemicals on the sink surface, as this may damage the finish.
- Avoid dropping heavy or sharp objects into the sink, which could cause dents or scratches.
- Ensure proper ventilation when working with adhesives or sealants during installation.

3. PACKAGE CONTENTS

Verify that all components are present before beginning installation:

- ATTOP 30 Inch Black Workstation Undermount Kitchen Sink
- Bottom Grid
- Sapele Cutting Board

- Moveable Bar Sink (Stainless Steel Basin)
- Foldable Drying Rack
- Basket Strainer Drain



Image: Included workstation accessories for the ATTOP sink.

The image above displays the various accessories included with your workstation sink, designed to enhance functionality and convenience.

4. SETUP & INSTALLATION

This sink is designed for undermount installation. Proper cabinet sizing and sealing are crucial for a successful setup.

4.1 Dimensions and Cabinet Requirements

The sink dimensions are 30" L x 19" W (front-to-back) x 9" D. The minimum recommended cabinet size is 33 inches to accommodate the sink and allow for proper installation and support.

Superior Quality

ATTOP

Excellent Quality Handmade Nano black stainless steel sinks with mini bead embossed wear-resistant finish that's easy to keep clean.

Elegant and smooth 10mm radius curved corners for easy cleaning.



More usable space for stacking dishes, and more room in the base cabinet.



Thick sound-absorbing pads for noise reduction and thick paint coating prevents condensation.



Nano black coating makes oil resistant and scratch proof

Mini bead embossed wear-resistant finish offers lasting durability, even under heavy use.



Engineered grooves allow for complete water drainage.

Image: Detailed dimensions of the ATTOP 30-inch workstation sink, including outer and inner measurements, bowl depth, material thickness, and recommended minimum cabinet size.

Refer to the dimension diagram for precise measurements to ensure compatibility with your countertop and cabinet.

4.2 Sound Dampening and Condensation Prevention

The sink features heavy-duty sound guard undercoating and thick rubber padding to minimize noise during use and reduce condensation buildup on the exterior of the sink bowl.



Thick Rubber Pads

Thick sound-absorbing pads for noise reduction from dish washing.



Sound Barrier Technology

Innovative anti-condensation undercoating enhances sound-deadening and improves insulation.



Non-Toxic Undercoating

Thick paint coating Prevents condensation.



Fast Drain

Sloped bottom and X grooves design make drain fast.



2.85mm thickness panel for good installation.

Image: Features of the sink's construction, highlighting thick rubber pads for noise reduction, sound barrier technology for insulation, non-toxic undercoating to prevent condensation, and a fast-draining design.

The image above illustrates the sound-dampening and anti-condensation features integrated into the sink's design.

5. OPERATION

The ATTOP workstation sink is designed for versatile use with its integrated accessories.

5.1 Workstation Functionality

The built-in ledges allow for the use of included accessories such as the cutting board, movable bar sink, and drying rack, transforming your sink into a functional workspace for food preparation and dish drying.

ENDLESS POSSIBILITY

ATOP

Built-in ledges and included accessories turn your sink into a workstation. With so many thoughtfully designed accessories, ATOP lets you create your own perfect workspace.



Image: Examples of the workstation sink in operation, showcasing the versatility of the cutting board, movable basin, and drying rack.

The images demonstrate how the accessories can be arranged to create an efficient workspace.



Image: An overhead view of the workstation sink fully equipped with its accessories, illustrating a complete functional setup.

This overhead view provides a clear perspective of the workstation's layout.

5.2 Drainage System

The sink features a sloped bottom and X-grooves for efficient water drainage, preventing water pooling. The stainless steel basket strainer drain effectively traps food waste and can be easily removed for cleaning.



Image: The bottom grid protects the sink surface.

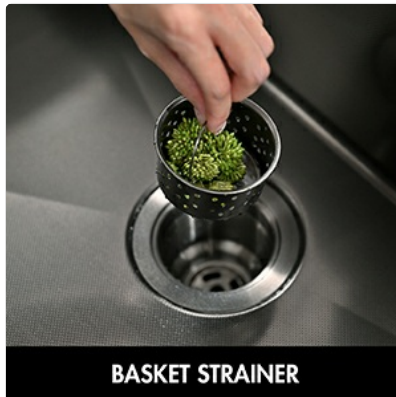


Image: The basket strainer for effective waste collection.

The bottom grid protects the sink from scratches, while the basket strainer ensures efficient waste management.

5.3 Product Video

Your browser does not support the video tag.

Video: An official product video demonstrating the features and functionality of the ATTOP Nano Black Workstation 30 Inch Undermount Sink, including its accessories and design elements.

This video provides a visual guide to the sink's features and how to utilize its workstation capabilities.

6. MAINTENANCE

Proper care will ensure the longevity and appearance of your ATTOP kitchen sink.

6.1 Cleaning Instructions

- Clean regularly with normal detergent and warm water.
- Always dry your sink after use and buff with a soft cloth to prevent limescale or mineral deposit buildup.
- Clean the sink once a week using a non-abrasive cleanser (e.g., Comet) and a clean, soft sponge. Scrub in the same direction as the natural grain of the sink.

6.2 Nano Black Finish Benefits

The nano black mini bead embossed stainless steel finish offers excellent corrosion and rust resistance. It is designed to prevent scratches during daily use, resist oil stains and floating rust, and allow liquids to flow easily, making it highly resistant to dirt and grime and easy to clean.

NANO SINK DESCRIPTION

ATOP

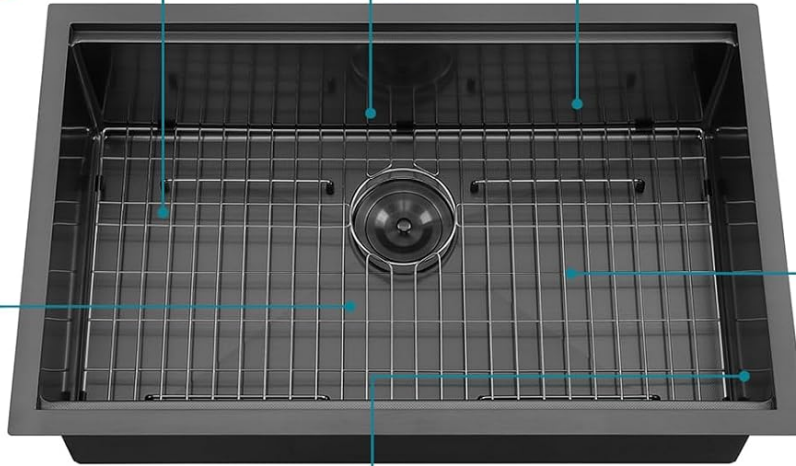
Prevent scratches during daily use



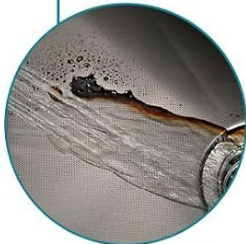
Upgrade mini bead embossed surface for anti-scratch



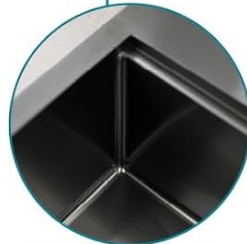
Prevent finger prints on sink



Prevent oil stains from remaining on the sink



R10 corner for smart look and easy to clean



Liquid flows as if on the surface of the lotus leaf, easier to clean



Image: Overview of the Nano Sink's superior quality features, including its R10 radius corners, rear-set drain, sound absorption, lotus leaf effect for easy cleaning, high resilience, and channel grooves for drainage.

This image highlights the advanced features of the nano black finish and sink design.



Image: The anti-scratch surface of the sink.

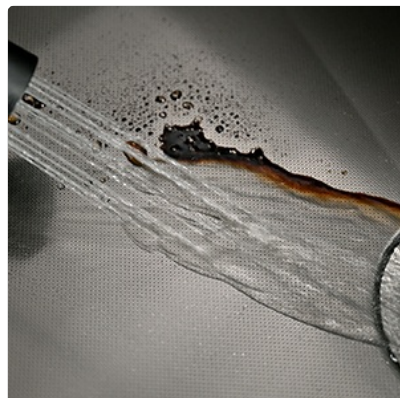


Image: Water and oil resistance of the sink surface.



Image: Demonstrating the easy-to-clean surface.



Image: The anti-fingerprint feature of the sink.

These images visually confirm the anti-scratch, anti-oil, easy-clean, and anti-fingerprint properties of the sink's nano black finish.

6.3 R10 Radius Corners

The sink features 10mm radius corners, which contribute to a modern aesthetic and facilitate easier cleaning compared to sharp 90-degree corners.

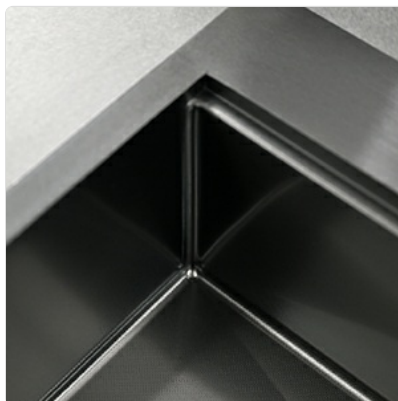


Image: Detail of the R10 smart corner design.

The image above shows the rounded R10 corner, which simplifies cleaning.

7. TROUBLESHOOTING

This section addresses common issues you might encounter with your kitchen sink.

7.1 Slow Drainage

- **Check Strainer:** Ensure the basket strainer is clear of food debris.
- **Inspect P-Trap:** If the issue persists, the P-trap under the sink may be clogged. Consult a plumber if necessary.

7.2 Water Spots or Stains

- **Dry After Use:** Always wipe the sink dry after each use to prevent mineral deposits from hard water.
- **Regular Cleaning:** Use a non-abrasive cleaner weekly as described in the Maintenance section.

7.3 Scratches on Surface

- While the nano black finish is scratch-resistant, heavy impact or abrasive materials can still cause damage. Use the bottom grid to protect the sink from pots and pans.
- Avoid using steel wool or harsh scrubbing pads.

8. SPECIFICATIONS

Brand	ATTOP
Model Number	WSBK-3019-UM
Color	Black stainless steel
Material	Stainless Steel
Product Dimensions (D x W x H)	19"D x 30"W x 9"H
Installation Type	Undermount
Bowl Depth	9 Inches
Edge Plate Thickness	3.0mm
Bowl Gauge	18 Gauge
Minimum Cabinet Size	33 Inches
Drain Type	Grid (Basket Strainer Included)
Included Components	Sink, Grid, Cutting Board, Moveable Bar Sink, Drying Rack, Strainer
Item Weight	31 Pounds

9. WARRANTY & SUPPORT

For warranty information and customer support, please refer to the documentation provided with your purchase or contact ATTOP customer service directly. Keep your proof of purchase for any warranty claims.

For further assistance, please visit the [ATTOP Store on Amazon](#).



© 2024 ATTOP. All rights reserved.