

MONDAWE AM-S008AC-10MB

MONDAWE 10 Inch Matte Black Shower System with Tub Spout User Manual

Model: AM-S008AC-10MB

INTRODUCTION

This manual provides detailed instructions for the installation, operation, and maintenance of your MONDAWE 10 Inch Matte Black Shower System with Tub Spout. Please read this manual thoroughly before installation and retain it for future reference. Proper installation and care will ensure optimal performance and longevity of your shower system.

SAFETY INFORMATION

- Always turn off the main water supply before beginning any plumbing work.
- Wear appropriate personal protective equipment, such as safety glasses and gloves, during installation.
- If you are unsure about any part of the installation process, consult a qualified plumber.
- Ensure all connections are secure to prevent leaks.
- Do not overtighten connections, as this may damage components.

PACKAGE CONTENTS

Verify that all components are present and undamaged before proceeding with installation.

- 10 inch Square Shower Head (304 Stainless Steel)
- 15.75 inch Shower Arm (304 Stainless Steel)
- Handheld Shower (304 Stainless Steel)
- 59 inch Shower Hose (304 Stainless Steel)
- Bathtub Spout (304 Stainless Steel)
- Handheld Shower Holder (Brass)
- Water Control Mixing Valve (Brass)
- Mounting Hardware



Image: All included parts for the MONDAWE shower system, including the shower head, shower arm, mixing valve, handheld shower, hose, tub spout, holder, and various mounting accessories.

SPECIFICATIONS

Installation Type	Wall Mounted
Finish	Matte Black
Valve Body Material	Brass
Shower Head Material	304 Stainless Steel
Hand Shower Material	304 Stainless Steel
Handheld Holder Material	304 Stainless Steel & Brass
Shower Hose Material	304 Stainless Steel
Handle Material	Zinc Alloy
Shower Arm Length	15.75 inches

Shower Head Diameter	10 inches
Hand Shower Hose Length	59 inches
Hose Connection Size	1/2 inch NPT (American Standard)
Item Model Number	AM-S008AC-10MB

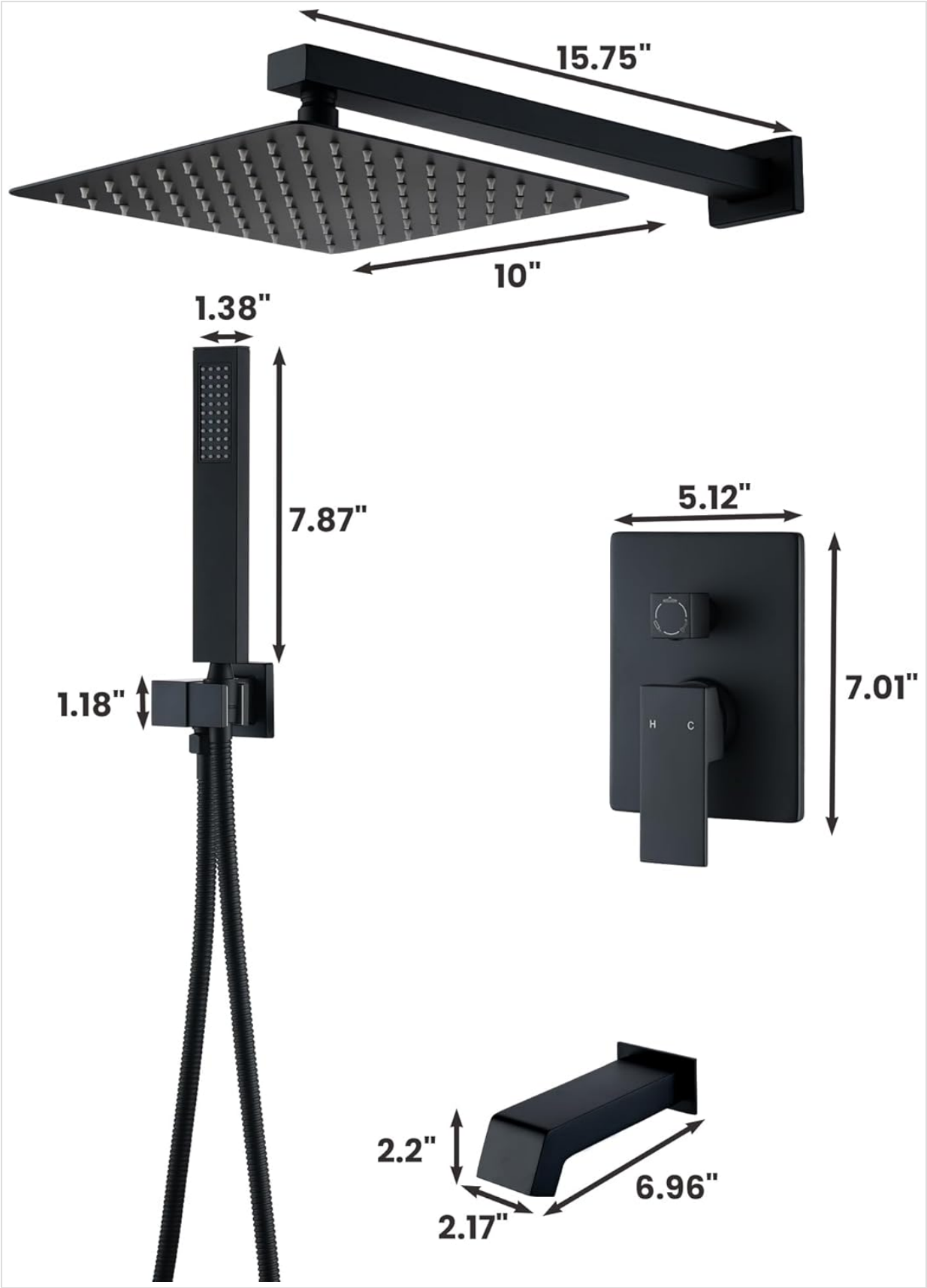


Image: Dimensional drawing showing the measurements for the 10-inch square shower head, 15.75-inch shower arm, handheld shower, mixing valve, and tub spout.

SETUP (INSTALLATION)

The MONDAWE shower set is designed for wall-mounted installation and uses American standard 1/2 inch NPT threads, compatible with most standard U.S. plumbing connections. Professional installation is recommended.

1. **Prepare the Wall:** Ensure the wall is properly prepared for plumbing and mounting the mixing valve.
2. **Install the Mixing Valve:** Carefully install the brass water control mixing valve into the wall. Pay close attention to the depth of the valve to ensure it aligns correctly with the finished wall surface. The protective install plate may not always indicate the precise finished surface depth; independent verification is advised.
3. **Connect Water Lines:** Connect the hot and cold water supply lines to the appropriate inlets on the mixing valve.
4. **Install Shower Arm and Head:** Secure the 15.75-inch shower arm to the wall outlet and then attach the 10-inch square rainfall shower head.
5. **Install Tub Spout:** Mount the bathtub spout to its designated wall connection.
6. **Install Handheld Shower Components:** Attach the handheld shower holder to the wall. Connect the 59-inch shower hose to the mixing valve outlet and the handheld shower.
7. **Test for Leaks:** Once all components are installed, slowly turn on the main water supply and check all connections for leaks. Address any leaks immediately.



Image: An example of the MONDAWE shower system installed in a contemporary bathroom setting, showcasing the wall-mounted components.

OPERATING INSTRUCTIONS

Your MONDAWE shower system features a multi-function mixer valve for easy control of water flow and output.

- **Water Flow Control:** The main handle on the mixing valve controls the water flow. Lift the handle up to turn on the water and increase flow, and push it down to decrease flow and turn off the water.
- **Temperature Control:** Rotate the main handle left for hot water and right for cold water to adjust the desired temperature.
- **Function Diverter:** The knob above the main handle is the diverter. Rotate this knob to select your desired water outlet: rainfall shower head, high-pressure handheld shower, or tub spout.



Image: A visual guide to the 3-way diverter, demonstrating how to rotate the knob to select between the shower head, handheld shower, and tub spout functions. It also shows the hot and cold water flow control.

10 Inches Shower Head

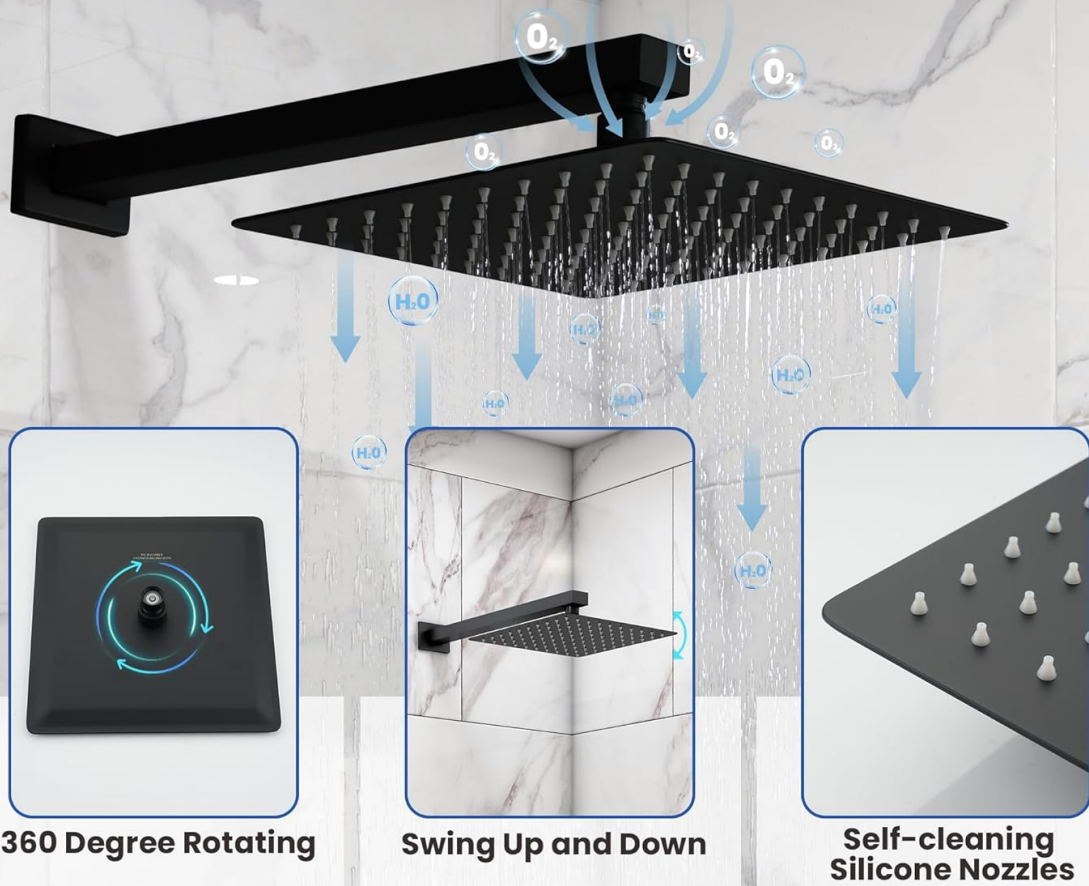


Image: Features of the 10-inch square shower head, including its 360-degree rotating capability, vertical swing adjustment, and self-cleaning silicone nozzles for easy maintenance.



Image: Details of the high-pressure handheld shower, featuring a 59-inch shower hose, a 360-degree rotating connection for flexibility, and a built-in check valve to prevent backflow.

MAINTENANCE

Regular cleaning and maintenance will help preserve the finish and functionality of your shower system.

- **Cleaning the Finish:** To maintain the matte black finish, clean regularly with a soft cloth and mild soap. Avoid abrasive cleaners, harsh chemicals, or scouring pads, as these can damage the finish.
- **Cleaning Nozzles:** The rainfall shower head and handheld shower are equipped with self-cleaning silicone jet nozzles. To remove calcium and lime build-up, simply wipe the nozzles with your finger or a soft cloth. This is particularly effective in areas with hard water.
- **Hose Maintenance:** Periodically check the shower hose for kinks or damage. Ensure it is free from twists to maintain proper water flow.

TROUBLESHOOTING

If you encounter issues with your shower system, refer to the following common problems and solutions:

Problem	Possible Cause	Solution
---------	----------------	----------

Low Water Pressure	Clogged nozzles; partially closed shut-off valve; debris in the system.	Clean the silicone nozzles by wiping them. Ensure shut-off valves are fully open. Flush the system if debris is suspected.
Leaks from Connections	Loose connections; damaged O-rings or seals; incorrect thread sealant.	Tighten connections carefully. Inspect and replace any damaged O-rings or seals. Ensure proper use of plumber's tape or thread sealant.
Diverter Not Switching Functions	Internal debris; worn diverter cartridge.	Flush the system to remove debris. If the issue persists, the diverter cartridge may need inspection or replacement by a professional.

If these steps do not resolve the issue, please contact customer support.

WARRANTY INFORMATION

Specific warranty details for the MONDAWE 10 Inch Matte Black Shower System are not provided in this document. Please refer to the product packaging or contact MONDAWE customer support for comprehensive warranty information.

SUPPORT

For further assistance, technical support, or inquiries regarding your MONDAWE shower system, please refer to the contact information provided on the product packaging or the official MONDAWE website.