

## Ubiquiti UVC-G6-INS-W

# Ubiquiti UniFi G6 Instant UVC-G6-INS-W User Manual

Model: UVC-G6-INS-W

## 1. INTRODUCTION

This manual provides essential instructions for the installation, operation, and maintenance of your Ubiquiti UniFi G6 Instant UVC-G6-INS-W surveillance camera. The UniFi G6 Instant is a compact and powerful security solution designed for seamless integration with existing UniFi network infrastructures, offering reliable surveillance capabilities.

Please read this manual thoroughly before using the device to ensure proper functionality and to prevent damage.

## 2. PACKAGE CONTENTS

Verify that all items are present in your package:

- Ubiquiti UniFi G6 Instant Camera
- Replacement Battery Module
- Quick Start Guide
- Mounting Hardware



*Figure 1: Ubiquiti UniFi G6 Instant Camera. This image displays the front of the compact surveillance camera, highlighting its lens and indicator light.*

## 3. PRODUCT OVERVIEW

The UniFi G6 Instant camera is engineered for robust surveillance performance within the UniFi ecosystem. Key features include:

- **Network Integration:** Seamlessly integrates with existing UniFi networks for centralized management

and comprehensive security monitoring.

- **Hot-Swap Functionality:** Designed for continuous operation, allowing component replacement without system shutdown.
- **Compact Design:** Measures approximately 10 x 8 x 2 inches and weighs 1 pound, facilitating versatile installation options in various environments.
- **Tool-Free Maintenance:** Innovative design minimizes downtime during routine upkeep by enabling component replacement without specialized tools.
- **Enhanced Reliability:** Includes a replacement battery module for sustained operation and robust Ethernet connectivity for stable performance.

## 4. SETUP

---

### 4.1 Physical Installation

1. **Choose a Location:** Select a suitable location for the camera, ensuring optimal viewing angles and network connectivity. Consider environmental factors and power source proximity.
2. **Mount the Camera:** Use the provided mounting hardware to securely attach the camera to the desired surface. Ensure the camera is stable and correctly oriented.
3. **Connect Power:** Connect the camera to a power source. The camera supports Ethernet connectivity, which often includes Power over Ethernet (PoE) for simplified installation (verify your specific model's power requirements).
4. **Connect to Network:** Connect the camera to your UniFi network via an Ethernet cable.

### 4.2 Software Configuration

1. **Access UniFi Protect:** Ensure your UniFi Network Controller and UniFi Protect application are running and accessible.
2. **Adopt the Camera:** Open the UniFi Protect interface. The G6 Instant camera should appear as a discoverable device. Follow the on-screen prompts to adopt the camera into your UniFi Protect system.
3. **Configure Settings:** Once adopted, configure camera settings such as recording schedules, motion detection zones, and image quality preferences within the UniFi Protect interface.

## 5. OPERATING INSTRUCTIONS

---

The UniFi G6 Instant camera operates under the management of the UniFi Protect software. All monitoring, recording, and configuration tasks are performed through this platform.

- **Live View:** Access the UniFi Protect dashboard to view live feeds from your G6 Instant camera.
- **Playback:** Review recorded footage by navigating to the timeline or event list within UniFi Protect.
- **Event Management:** Manage motion detection alerts and other events configured for your camera.
- **Firmware Updates:** Regularly check for and apply firmware updates through the UniFi Protect interface to ensure optimal performance and security.

## 6. MAINTENANCE

---

Regular maintenance ensures the longevity and optimal performance of your UniFi G6 Instant camera.

- **Cleaning:** Periodically clean the camera lens with a soft, dry cloth to remove dust or smudges that may affect image clarity. Do not use harsh chemicals.
- **Firmware Updates:** Keep the camera firmware updated to the latest version available through UniFi Protect. This provides security enhancements and new features.

- **Hot-Swap Component Replacement:** The G6 Instant features hot-swap capability for certain components, such as the battery module. This allows for replacement without powering down the entire system. Refer to the UniFi Protect documentation for specific procedures.
- **Tool-Free Maintenance:** The design facilitates tool-free component replacement, simplifying routine maintenance tasks.

## 7. TROUBLESHOOTING

If you encounter issues with your UniFi G6 Instant camera, consider the following troubleshooting steps:

- **No Power:**
  - Verify the power connection.
  - If using PoE, ensure the PoE injector or switch port is active and providing power.
  - Check the replacement battery module for proper installation and charge.
- **No Network Connectivity:**
  - Ensure the Ethernet cable is securely connected at both ends.
  - Check the network switch or router for proper operation.
  - Verify that the camera is within the same network segment as your UniFi Protect controller.
- **Camera Not Appearing in UniFi Protect:**
  - Confirm network connectivity as above.
  - Ensure UniFi Protect is running and updated.
  - Try restarting the camera by cycling its power.
- **Poor Image Quality:**
  - Clean the camera lens.
  - Check camera settings in UniFi Protect for resolution and bitrate.
  - Ensure adequate lighting in the surveillance area.

For further assistance, refer to the Ubiquiti support resources or contact technical support.

## 8. SPECIFICATIONS

Model	UVC-G6-INS-W
Manufacturer	Ubiquiti
Package Dimensions	10 x 8 x 2 inches
Item Weight	1 pound
Network Interface	Ethernet
Special Features	Hot-Swap Functionality, Tool-Free Maintenance, Replacement Battery Module

## 9. WARRANTY AND SUPPORT



The Ubiquiti UniFi G6 Instant UVC-G6-INS-W comes with a**1-year manufacturer warranty** from the date of purchase. This warranty covers defects in materials and workmanship under normal use.

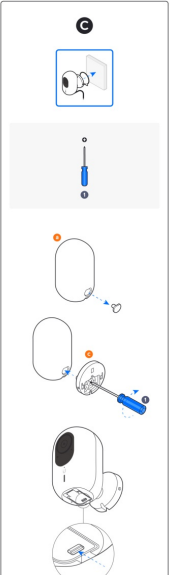
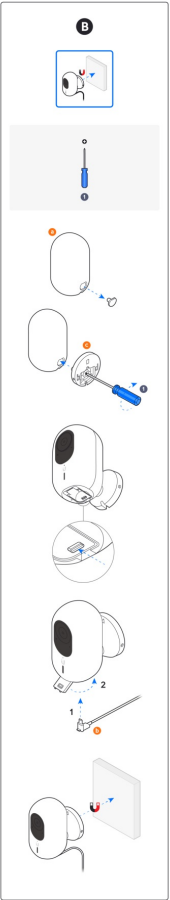
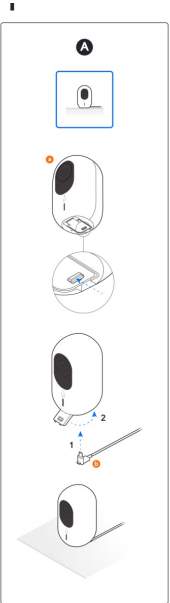
For warranty claims, technical support, or further product information, please visit the official Ubiquiti support website or contact their customer service department. Keep your proof of purchase for warranty validation.

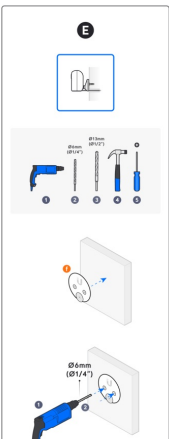
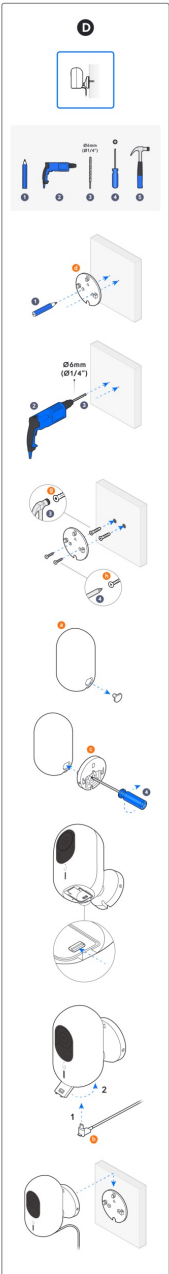
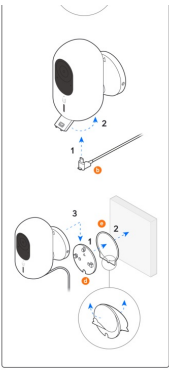
**Ubiquiti Support:** <https://www.ui.com/support>

© 2025 Ubiquiti Inc. All rights reserved. UniFi is a registered trademark of Ubiquiti Inc.

Related Documents - UVC-G6-INS-W

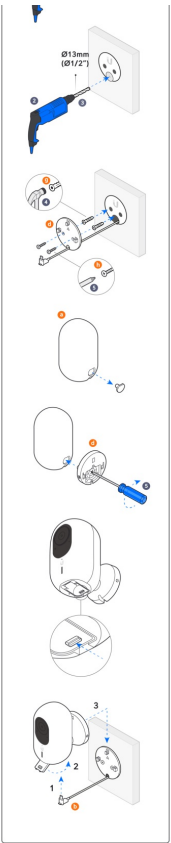
	<p><a href="#">Ubiquiti UniFi G6 Instant Installation Guide</a></p> <p>A comprehensive guide for installing and setting up the Ubiquiti UniFi G6 Instant, detailing network integration, mobile app management, and hardware connections.</p>
	



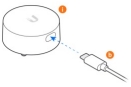


[Ubiquiti UniFi Protect G4 Instant Camera UVC-G4-INS Quick Start Guide](#)

A concise guide to setting up the Ubiquiti UniFi Protect G4 Instant Camera (UVC-G4-INS), detailing connectivity requirements, dimensions, and mobile app integration.



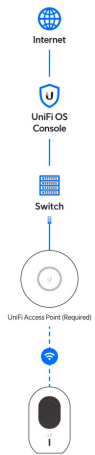
2



3

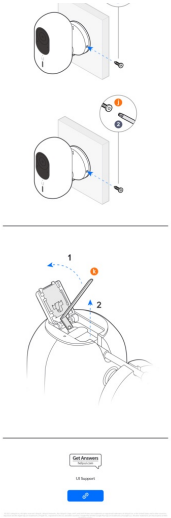
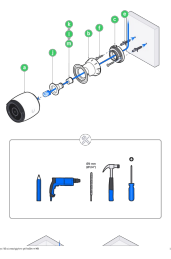
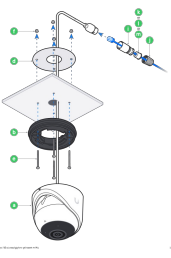


4

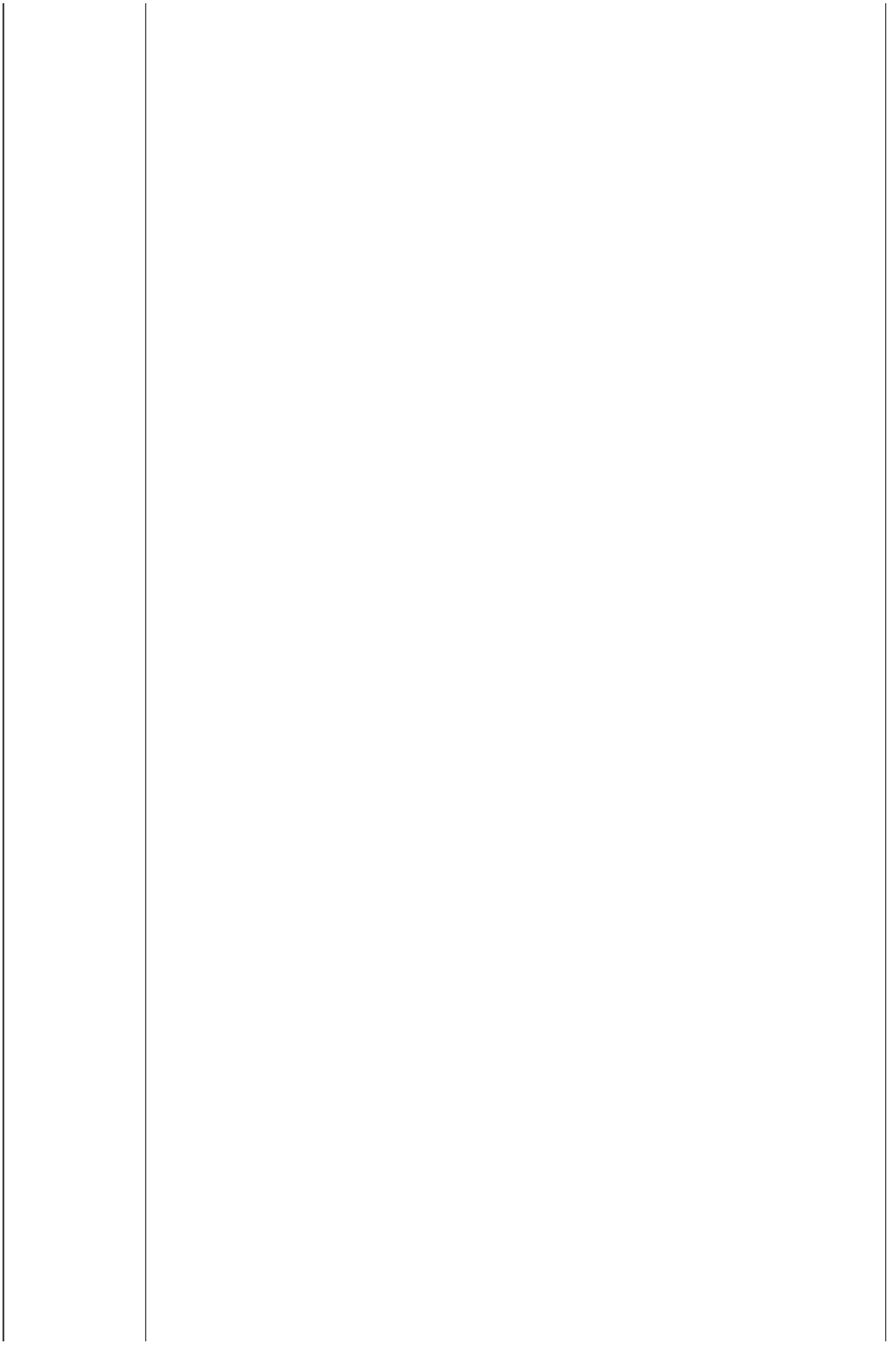


5



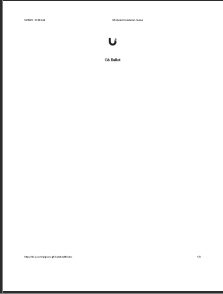
	
	<p><a href="#">Ubiquiti UniFi G6 Bullet Camera Installation Guide</a></p> <p>A comprehensive guide for installing the Ubiquiti UniFi G6 Bullet camera, covering mounting, connections, and network setup.</p>
	<p><a href="#">Ubiquiti UniFi G6 Turret Installation Guide</a></p> <p>Step-by-step installation guide for the Ubiquiti UniFi G6 Turret camera, covering mounting, cabling, and network setup.</p>





[Ubiquiti UniFi G4 Instant Camera Installation Guide](#)

Installation guide for the Ubiquiti UniFi G4 Instant Camera (UVC-G4-INS), detailing setup and usage.

	<p><a href="#">Ubiquiti UniFi Protect G6 Bullet Installation Guide</a></p> <p>Installation guide for the Ubiquiti UniFi Protect G6 Bullet camera, covering package contents, mounting hardware, and installation steps.</p>