

Manuals+

[Q & A](#) | [Deep Search](#) | [Upload](#)

manuals.plus /

- › [Xega](#) /
- › [Xega 4G Cellular Security Camera \(Model XG-26 T\) User Manual](#)

Xega XG-26 T

Xega 4G Cellular Security Camera (Model XG-26 T) User Manual

1. INTRODUCTION

This manual provides comprehensive instructions for the Xega 4G Cellular Security Camera, Model XG-26 T. This solar-powered wireless camera is designed for surveillance in remote or off-grid locations where Wi-Fi is unavailable. It features 4G LTE connectivity, a 10000mAh battery, 2K HD video, motion detection, and two-way audio. Please read this manual thoroughly before operating the device to ensure proper setup and functionality.

2. WHAT'S IN THE BOX

Verify that all components are present before proceeding with installation.

- 1 x 4G 10000mAh Solar Powered Security Camera (with pre-inserted, non-removable SIM Card)
- 1 x 3W Solar Panel
- 1 x Power Cable
- 1 x Mounting Bracket
- 1 x Screw Kit
- 2 x Installation Straps
- 2 x Positioning Stickers
- 1 x 3-Meter Solar Cable

Human Motion Detection

Get Instant Notifications Wherever You Are



Siren



Spotlight



APP



Figure 2.1: Package Contents

3. PRODUCT FEATURES

3.1 4G SIM Card Connectivity (No Wi-Fi Required)

This camera operates exclusively via a built-in 4G SIM card, making it ideal for locations without Wi-Fi access. A 4G data plan subscription is required after an initial 7-day trial. The SIM card is non-removable and cannot be replaced.

Operational Costs

- Unlimited Data Plan(Required)

SIM Card Subscription Required After 7 day Trial

1-Month
\$19.90

6-Month
\$99.90

12-Month
\$169.90

Note:

Built-in SIM Card Non Replaceable

Not Support WiFi Connection

- Cloud Storage Service Subscription(Optional)

1.99/month, or you can insert an TF Card (Sold separately)

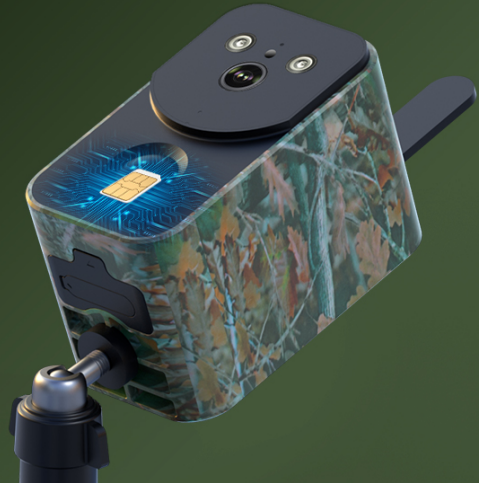


Figure 3.1: 4G LTE Connectivity

The camera is suitable for various remote applications such as:

- RV and camping sites
- Travel and hunting areas
- Gardens and second homes
- Farms and barns
- Wildlife observation spots

3.2 Solar Powered with 10000mAh Battery

The camera is equipped with a 10000mAh rechargeable battery, providing extended operation. The included 3W solar panel continuously charges the battery, significantly reducing the need for manual charging. This ensures reliable power in outdoor and remote environments.

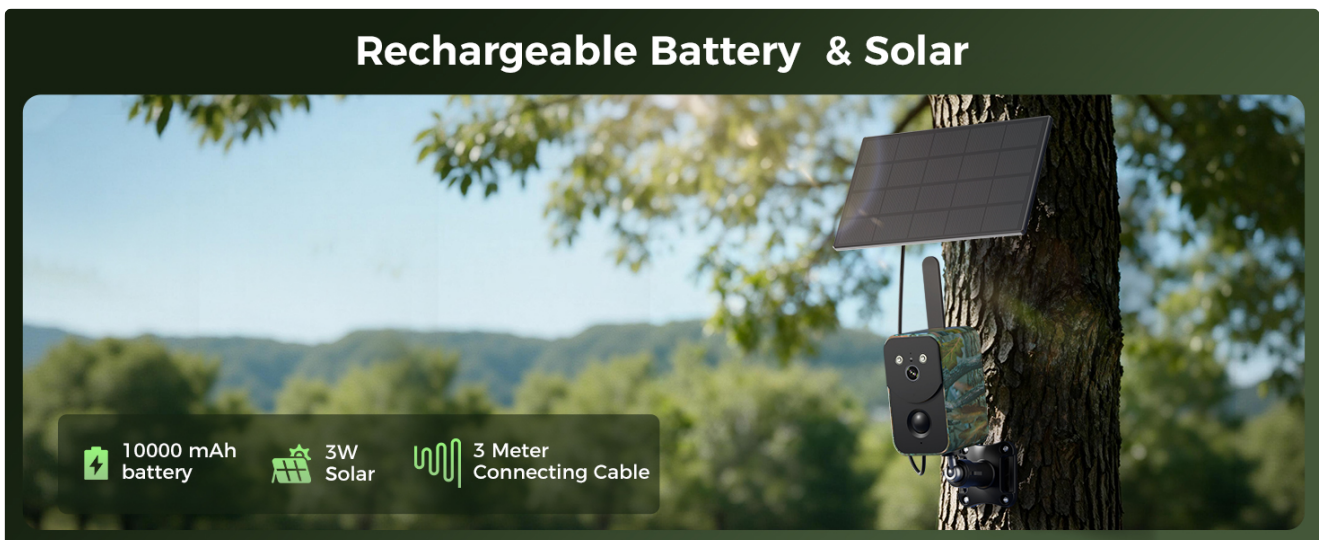


Figure 3.2: Solar Charging System

3.3 2K HD Video Quality and Night Vision

Capture clear and detailed footage with 3MP (2K HD) resolution. The camera supports both color and black-and-white night vision, with a range of up to 20 meters, ensuring effective monitoring day and night.

2K Resolution | Clear Live Video - Day and Night



Figure 3.3: 2K Resolution Day and Night

3.4 Smart Motion Detection and Alerts

The camera features smart motion detection that triggers a sound-light alarm and sends real-time alerts to your mobile application. This ensures you receive instant notifications of any detected activity.

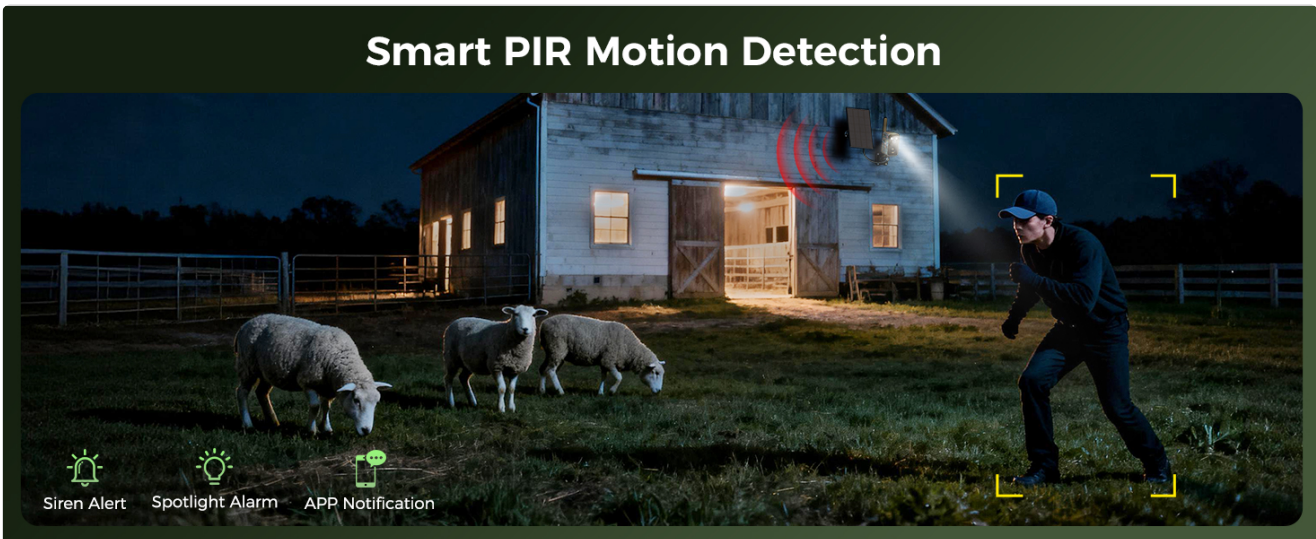


Figure 3.4: Smart PIR Motion Detection

3.5 Portable Design and IP66 Weatherproofing

The camera's lightweight, palm-sized design makes it highly portable for quick deployment. With an IP66 waterproof and dustproof rating, it is resistant to rain, wind, and snow, suitable for both indoor and outdoor use.

Easy to Carry | Your Eyes When You're Not There



Figure 3.5: Portable Design

3.6 Customizable Detection Zones and Two-Way Audio

Define specific monitoring areas to reduce false alarms and optimize 4G data usage. The built-in two-way audio allows for real-time communication, enabling you to issue voice warnings or communicate with family remotely.

Customized Detection Area

Reduced False Alarms - Lower 4G Data Consumption



Figure 3.6: Customized Detection Area

2-Way Audio | Respond in Real-Time- Make Life Easier



Figure 3.7: Two-Way Audio

3.7 Data Security and Storage Options

The camera offers encrypted cloud storage (optional, with a 30-day trial and subsequent subscription) to protect your data. Local storage is also supported via a TF card (sold separately), allowing you to retrieve historical footage even if the camera is lost or damaged.



Figure 3.8: Two-Way Storage

4. SETUP GUIDE

4.1 Initial Charging

Before first use, fully charge the camera using the provided power cable. Although the solar panel provides continuous charging, an initial full charge ensures optimal battery performance.

4.2 SIM Card and Data Plan Activation

The 4G SIM card is pre-inserted and non-removable. The camera includes a 7-day initial SIM data for testing. After this period, a subscription to a 4G unlimited data plan (e.g., \$19.9/month) via the XEGA App is required for continued operation.

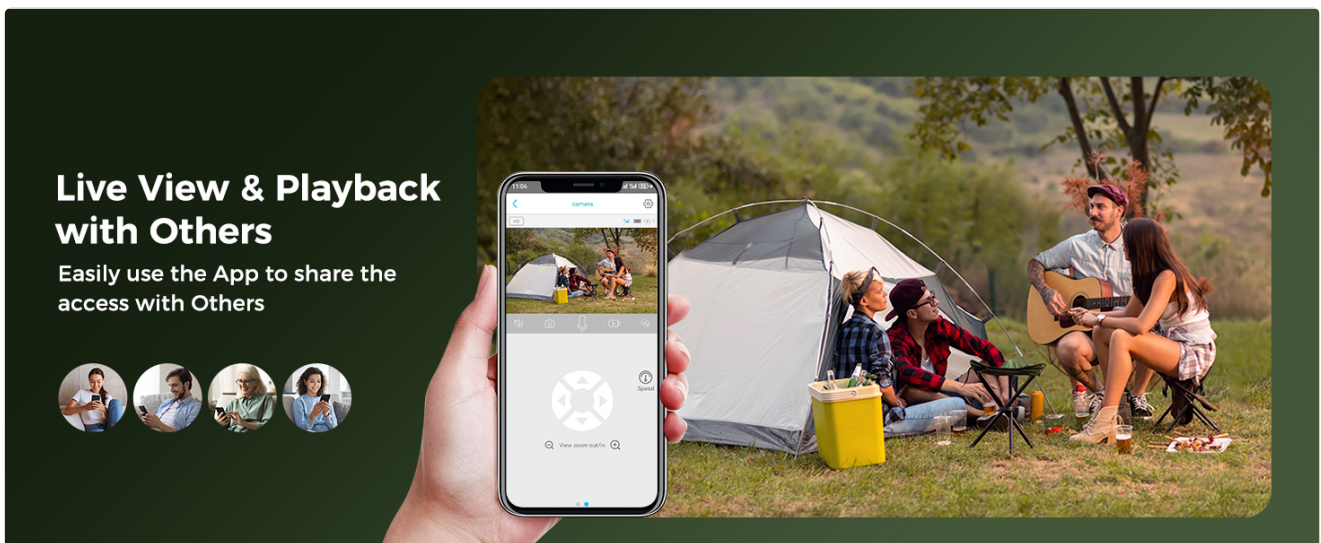


Figure 4.1: Data Plan and Cloud Storage Information

4.3 App Installation and Device Pairing

1. Download the official XEGA App from your device's app store.

2. Create an account and log in.
3. Follow the in-app instructions to add your camera. This typically involves scanning a QR code on the camera or entering its device ID.
4. Ensure your smartphone has an active internet connection during the pairing process.

4.4 Installation Options

The camera offers flexible installation for various environments:

- **Desktop Placement:** Simply place the camera on a flat surface.
- **Wall/Tree Mounting:** Use the provided mounting bracket, screw kit, or installation straps to secure the camera and solar panel to a wall or tree. Position the solar panel to receive maximum sunlight.



Figure 4.2: Dual Installation Options

Note: APP-controlled rotation and auto-rotation are not supported by this model.

5. OPERATION

5.1 Live View and Playback

Once paired, open the XEGA App to access the live view from your camera. You can also review recorded footage from local storage (TF card) or cloud storage (if subscribed).



Figure 5.1: App Live View Interface

5.2 Motion Detection Settings

Configure motion detection sensitivity and customize detection zones within the app. This helps to focus monitoring on critical areas and minimize unnecessary alerts and data consumption.

5.3 Two-Way Audio Functionality

Use the two-way audio feature through the app to speak and listen. This can be used for communication or to deter intruders with a voice warning.

5.4 Sharing Access

The XEGA App allows you to share camera access with family members or trusted individuals, enabling multiple users to view the live feed simultaneously.



Figure 5.2: Shareable Viewing

6. MAINTENANCE

- **Solar Panel:** Regularly clean the solar panel surface to ensure optimal sunlight absorption and charging efficiency.
- **Camera Lens:** Keep the camera lens clean and free from dust or debris for clear image quality.
- **Battery:** While designed for long life, avoid prolonged exposure to extreme temperatures to maximize battery lifespan.
- **Firmware Updates:** Check the XEGA App periodically for available firmware updates to ensure your camera has the latest features and security enhancements.

7. TROUBLESHOOTING

Problem	Possible Cause	Solution
Camera not connecting to 4G network.	No active data plan; poor 4G signal; SIM card issue.	Ensure 4G data plan is active via XEGA App. Relocate camera to an area with better 4G coverage. Contact customer support if SIM card is suspected to be faulty.
Battery not charging.	Insufficient sunlight on solar panel; faulty solar panel/cable; extreme temperatures.	Ensure solar panel is clean and positioned for maximum direct sunlight. Check cable connections. Charge directly with power cable if solar charging is consistently low.
Frequent false alarms.	High motion detection sensitivity; wide detection zone.	Adjust motion detection sensitivity in the app. Customize detection zones to exclude areas with irrelevant movement (e.g., swaying branches).
No app notifications.	App notification settings disabled; phone's notification settings.	Check notification settings within the XEGA App. Verify phone's system notification settings for the app are enabled.

8. SPECIFICATIONS

Feature	Detail
Brand	Xega
Model Number	XG-26 T
Cellular Technology	4G LTE
Battery Capacity	10000mAh
Solar Panel Power	3W
Resolution	2K (3MP)
Night Vision Range	Up to 20m
Weather Resistance	IP66 Waterproof/Dustproof
Storage Options	Encrypted Cloud Storage (optional), TF Card (up to 128GB, sold separately)
Product Dimensions	6"L x 5"W
Item Weight	0.75 Kilograms

9. WARRANTY AND SUPPORT

The Xega 4G Cellular Security Camera comes with a **2-year warranty** covering product quality. For quality issues, a no-cost replacement is available within 1 year of purchase. Xega offers 24/7 online customer service for timely support.

For further assistance, please refer to the XEGA App or visit the official Xega support website.



Figure 9.1: Customer Support Information

10. PRODUCT VIDEO DEMONSTRATION

Your browser does not support the video tag.

Video 10.1: Xega 4G LTE Solar Cellular Security Camera with SIM Card. This video demonstrates the camera's features, installation options, and key functionalities.

