

## Manuals+

[Q & A](#) | [Deep Search](#) | [Upload](#)

manuals.plus /

› [CHIVALZ](#) /

› [CHIVALZ 6L Humidifier YZY6001-KC User Manual](#)

## CHIVALZ YZY6001-KC

# CHIVALZ 6L Cool Mist Humidifier User Manual

Model: YZY6001-KC

## 1. INTRODUCTION

---

Thank you for choosing the CHIVALZ 6L Cool Mist Humidifier. This device is designed to enhance your indoor air quality by adding moisture to the air, helping to alleviate issues caused by dryness. It features a large 6-liter water tank, quiet operation, an optional nightlight, and an essential oil diffuser function. Please read this manual thoroughly before use to ensure proper operation and maintenance.

## 2. IMPORTANT SAFETY INFORMATION

---

- Do not immerse the base of the humidifier in water or any other liquid.
- Do not drip essential oil directly into the water tank. Use the dedicated essential oil tray.
- It is recommended to place the humidifier at least 16 inches (40 cm) away from non-waterproof walls, appliances, and furniture when in use.
- Do not fill water beyond the maximum water level line indicated on the tank.
- Do not add water directly into the base chamber or mist tube.
- Do not add essential oils or supplemental water treatment solutions directly into the water tank. Use the aroma tray.
- Do not use detergents or harsh chemicals to clean the humidifier. Use white vinegar or mild soap and water as instructed in the maintenance section.



# 6L TOP FILL COOL MIST HUMIDIFIER

Transform Your Space:  
Enjoy Better Sleep  
and Breathe Healthier!

*Image: Important notices for safe operation.*

## 3. PACKAGE CONTENTS

---

Upon unpacking, please ensure all items are present and in good condition:

- 1 x CHIVALZ 6L Humidifier Unit
- 1 x Cleaning Brush
- 1 x User Manual (this document)

## 4. PRODUCT OVERVIEW

---

The CHIVALZ 6L Humidifier is designed for ease of use and effective humidification. Familiarize yourself with its main components:

- **Water Tank:** Large 6-liter capacity, transparent for easy water level monitoring, with an easy-carry handle.
- **Base:** Houses the ultrasonic atomizer, control knob, nightlight button, and essential oil tray.
- **Mist Nozzle:** 360-degree adjustable dual mist outlets for wide coverage.
- **Control Knob:** Adjusts mist output from minimum to maximum, and turns the unit ON/OFF.
- **Nightlight Button:** Toggles the soft blue nightlight ON/OFF.
- **Essential Oil Tray:** A dedicated compartment for adding essential oils for aromatherapy.

# Incorrect Operation

**⚠️ Note:** Never pour essential oils directly into water.



*Image: Key components and design features.*



*Image: 360-degree adjustable nozzle.*

## 5. SETUP

1. **Placement:** Place the humidifier on a flat, stable, and waterproof surface at least 16 inches (40 cm) away from walls and appliances.
2. **Filter Positioning:** Ensure the water filter is correctly positioned and rotate it clockwise to secure it.
3. **Fill Water Tank:** Remove the water tank from the base using the handle. Fill the tank with purified or distilled water. It is recommended to use distilled water to prevent mineral buildup. Do not exceed the

MAX water level.

4. **Replace Tank:** Carefully place the filled water tank back onto the base, ensuring it is seated correctly.
5. **Power On:** Plug the power cord into a suitable electrical outlet.



*Image: Simple operation process.*

Your browser does not support the video tag.

*Video: Official CHIVALZ video demonstrating the 6L Humidifier's mist output and nightlight feature in a Halloween-themed setting.*

## 6. OPERATING INSTRUCTIONS

- **Turn On/Off:** Rotate the control knob clockwise to turn the humidifier ON. Continue rotating to increase mist output. Rotate counter-clockwise to decrease mist output and turn OFF.
- **Adjust Mist Output:** Turn the control knob to your desired mist level. The humidifier can run for up to 50 hours on the lowest setting.
- **Nightlight Function:** Press the nightlight button to turn the soft blue nightlight ON or OFF. This is ideal for undisturbed sleep.
- **Essential Oil Diffuser:** Pull out the essential oil tray located on the side of the base. Add a few drops of your preferred essential oil onto the cotton pad (not directly into the water tank). Slide the tray back into place. The mist will carry the aroma into the air.

# Upgraded For Lasting Moisture

**6L**

Large Tank

**5s**

Fast Mist

**538ft<sup>2</sup>**

Coverage



*Image: CHIVALZ 6L Humidifier in operation, highlighting its large tank and fast mist.*

# Create a Comfortable Sleeping Atmosphere



Image: Humidifier in a bedroom, showing quiet operation and nightlight.

# Super Moisturizing Relieves Dryness



*Image: Humidifier providing moisture for comfort and plant health.*

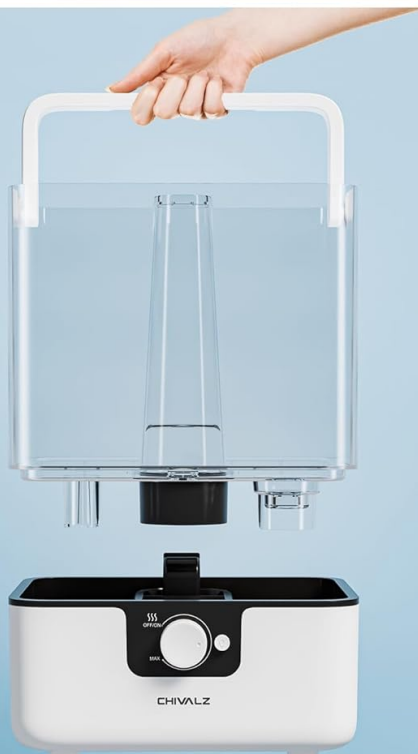
# Enjoy Aromatherapy



*Image: Adding essential oils for aromatherapy.*

Detail-Oriented  
Design

360°  
Adjustable Nozzle



Easy-Carry  
Water Tank Handle



One Knob Control

*Image: Extended runtime and dry burn protection.*



*Image: Indicator light button for operational status.*

## 7. MAINTENANCE

Regular cleaning is crucial for maintaining the performance and longevity of your humidifier. It is recommended to clean the humidifier every 2-3 weeks.

1. **Empty Water:** Unplug the humidifier and carefully remove the water tank. Empty any remaining water from both the tank and the base.
2. **Clean Water Tank:** Rinse the water tank with clean water. For thorough cleaning, use a soft cloth or

the provided cleaning brush to scrub the interior.

3. **Clean Base:** Gently wipe the base chamber with a soft, damp cloth. Use the cleaning brush to reach corners and gaps. Do not immerse the base in water.
4. **Clean/Replace Filter:** Turn the filter counter-clockwise to disassemble it. Rinse the filter under running water. Replace the filter element every 2-3 months for optimal performance. (Replacement filters and pads are available, search for B0D2KK6WFP).
5. **Drying:** Allow all parts to air dry completely before reassembling.

## NOTICE: IMPORTANT NOTICES:

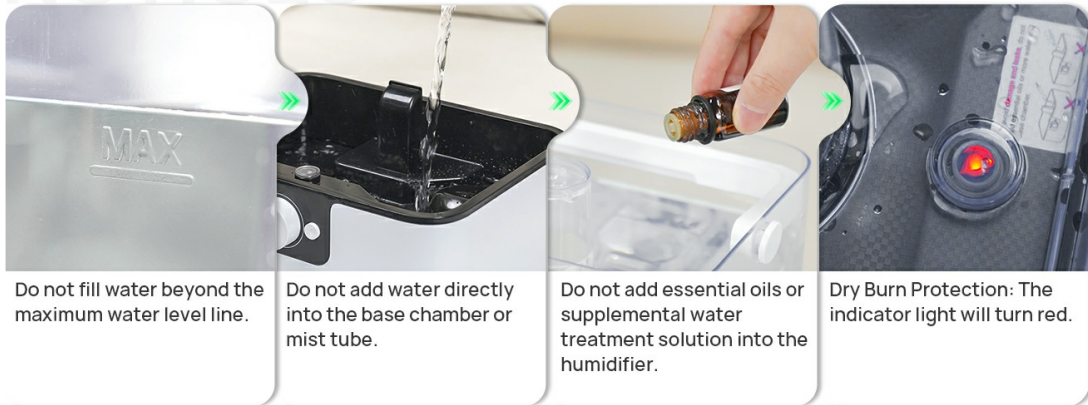


Image: How to clean your humidifier.

## 8. TROUBLESHOOTING

Problem	Possible Cause	Solution
No mist or low mist output	Water tank empty; mineral buildup on atomizer; unit not properly assembled.	Refill water tank; clean the atomizer with the provided brush; ensure tank is correctly seated on the base.
Red light indicator is on	Water level is too low.	Refill the water tank. The humidifier will automatically stop misting when water is low.
Water leakage during first use	Improper initial setup.	Pour out all water from the tank and base. Try taking down the water tank separately to fill it, then putting it back on the base and restarting.
PM2.5 value increases	PM2.5 detector misidentifies mist as particulate matter.	This is a common occurrence with some detectors and does not indicate poor air quality from the humidifier.

## 9. SPECIFICATIONS

Feature	Detail
Brand	CHIVALZ
Model Name	YZY6001-KC

Feature	Detail
Color	White
Capacity	6 Liters
Operation Mode	Ultrasonic
Mist Output	Up to 300ml/h
Runtime	Up to 50 hours (on lowest setting)
Noise Level	26dB (minimum)
Coverage Area	Up to 538 Square Feet
Special Features	360° Nozzle, Large Capacity, Aroma Diffuser, Easy Top-Fill, Nightlight, Dry Burn Protection
Product Dimensions	9.37"D x 12.67"W x 7.4"H
Item Weight	3.3 Pounds
Voltage	120 Volts
Wattage	25 watts

## 10. WARRANTY AND SUPPORT

CHIVALZ is committed to providing quality products and customer satisfaction. We offer reliable after-sales support to address any questions or concerns you may have about your humidifier. Please refer to your purchase documentation for specific warranty details or contact CHIVALZ customer service for assistance.