

[Manuals.plus](#) /

> [aowoka](#) /

> aowoka Hair Dryer (Model B0FK4D83LS) Instruction Manual

## aowoka B0FK4D83LS

# aowoka Hair Dryer Instruction Manual

MODEL: B0FK4D83LS

## Introduction

---

Thank you for choosing the aowoka High Speed Ionic Blow Dryer. This manual provides essential information for the safe and effective use of your new hair dryer. Please read it thoroughly before first use and keep it for future reference.



Figure 1: aowoka High Speed Ionic Hair Dryer

## Safety Information

To ensure safe operation and prevent injury or damage, please observe the following precautions:

- Do not use while bathing.
- Keep out of reach of children.
- Do not rinse or submerge in water.
- Keep the power plug and cord away from heated surfaces.

## Product Features

### Hyper-Speed Motor & Fast Drying

The aowoka hair dryer is equipped with an advanced brushless motor, delivering a powerful airflow at 160,000 rpm. This high-speed motor, combined with 1600 watts of power, ensures rapid drying, preventing heat damage from prolonged exposure. Expect drying times of 1-2 minutes for short hair, 2-3 minutes for medium-length hair, and 3-5 minutes for long hair.

# PROFESSIONAL HAIR CARE



**500** Million  
Negative Ions

**+30% Shiny**

**+40% Smooth**

**-60% Frizzy**



No Negative Ions

**0 Shiny**

**0 Smooth**

**+30% Frizzy**

Figure 2: Hyper-Speed Motor and Fast Drying Capabilities

## Ionic Technology for Smooth, Frizz-Free Hair

This ionic hair dryer releases up to 500 million negative ions. These negative ions neutralize positive charges in the hair, significantly reducing frizz and static. The result is smoother, shinier, and healthier-looking hair.

# NO HEAT DAMAGE

55°C Constant Temperature

**AOWOKA**

High Speed

Speed  
36m/s

Heat  
140°F

**OTHERS**

High heat

Speed  
15 m/s

Heat  
210°F

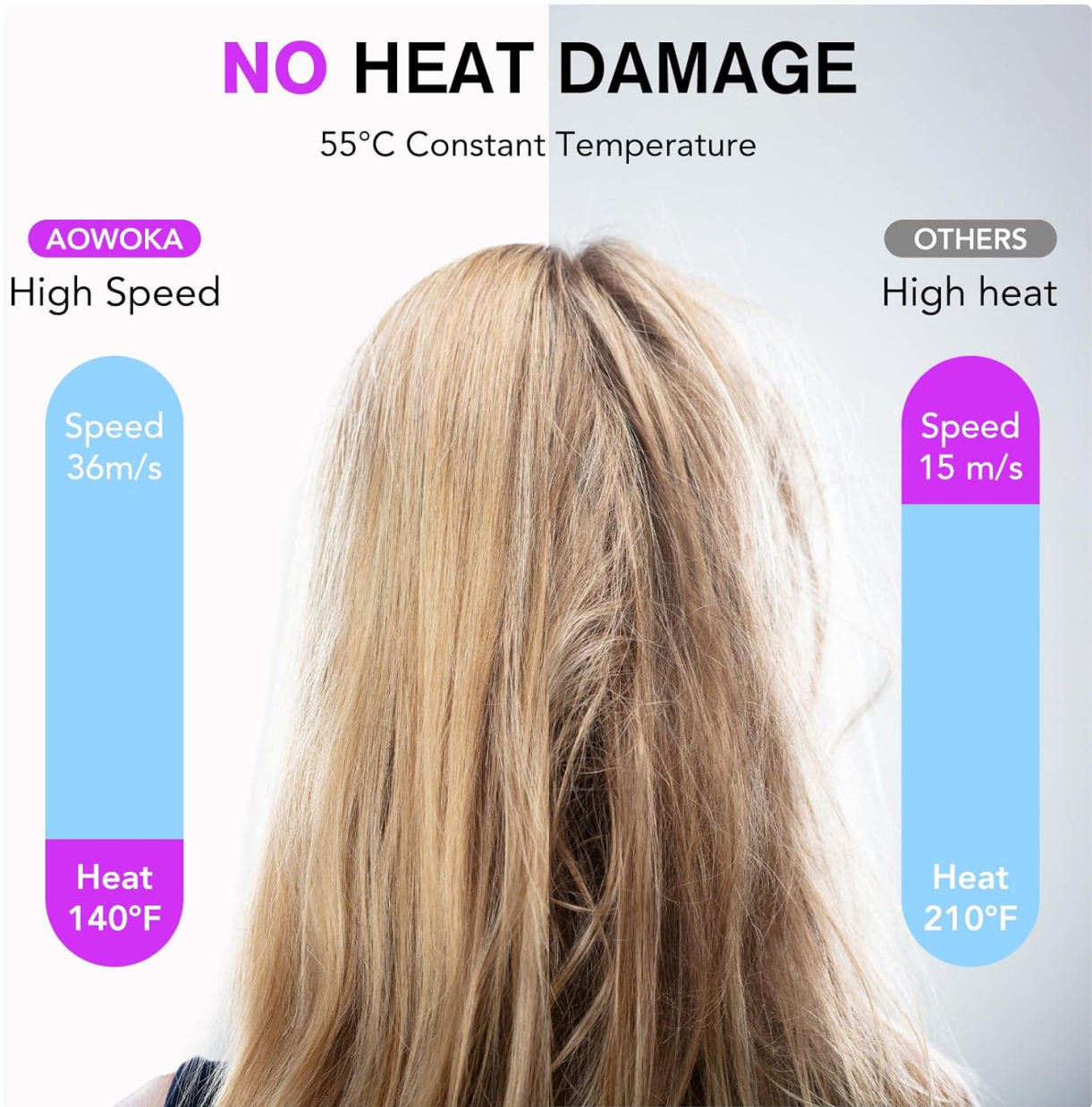


Figure 3: Benefits of Ionic Technology

## Intelligent Heat Control & No Heat Damage

The hair dryer maintains a constant temperature of 55°C (131°F) to prevent extreme heat damage. It features a temperature monitoring system that checks the output temperature 130 times per second, ensuring consistent and safe heat delivery.

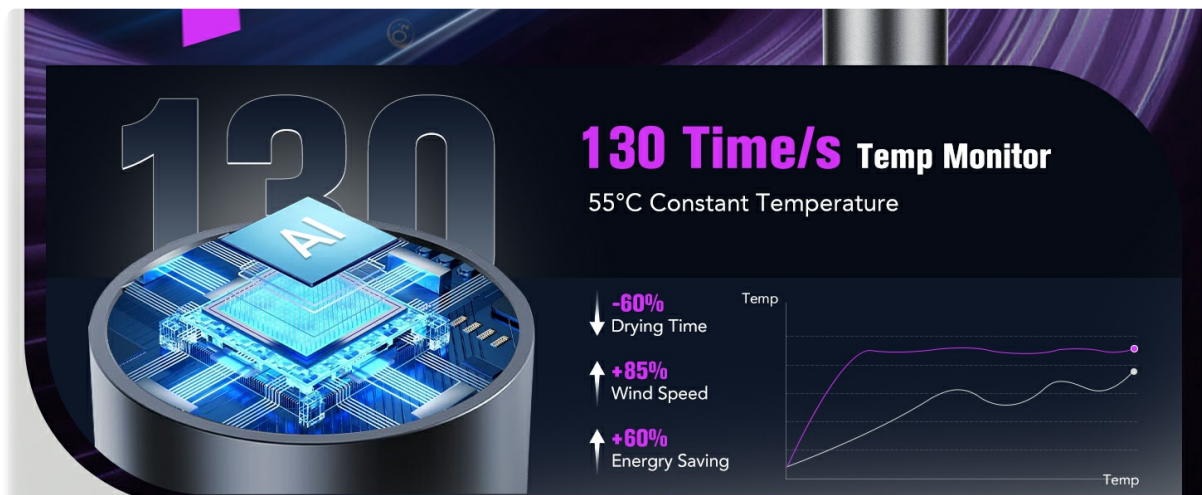


Figure 4: Intelligent Heat Control System

### Low Noise & Lightweight Design

Designed for comfort, the hair dryer operates at a low noise level of 59dB. Its lightweight construction, weighing approximately 407g (1.7 pounds), makes it easy to handle during use and convenient for travel.



Figure 5: Low Noise and Lightweight Design

### Magnetic Attachments

The hair dryer includes two magnetic attachments: a collection nozzle for precise styling and a diffuser for enhancing natural curls and waves. These attachments are easy to switch and secure firmly in place.

# LOW NOISE & LIGHTWEIGHT

**59dB** Low Noise



**407g** Lightweight



Figure 6: Magnetic Attachments for Versatile Styling

## Setup

1. Unpack all components from the packaging.
2. Select the desired attachment (collection nozzle or diffuser) based on your styling needs.
3. Align the attachment with the front of the hair dryer. The magnetic design will securely snap it into place.
4. Ensure the attachment is firmly seated before use.

## Operating Instructions

Familiarize yourself with the controls for optimal performance:

- **Power Button:** Located on the handle, slide to turn the hair dryer ON or OFF.
- **Airflow Speed Button:** Adjusts the fan speed. There are 3 distinct speed settings.
- **Heat Setting Button:** Controls the temperature of the airflow. There are 7 available heat settings, with a maximum temperature of 100°C (170°F).
- **Cool Shot Button:** Activates a burst of cool air to set your hairstyle.

# 12 MODES EASY TO OPERATE

Monitor the output temp **130 times/s**



Figure 7: Control Panel Overview

## Maintenance

Regular maintenance ensures the longevity and optimal performance of your aowoka hair dryer:

- **Cleaning:** Always unplug the hair dryer and allow it to cool completely before cleaning. Wipe the exterior with a soft, damp cloth. Do not use abrasive cleaners or immerse the unit in water.
- **Filter Cleaning:** Periodically check and clean the high-density filter cover located at the bottom of the handle. Remove any accumulated dust or hair to maintain strong airflow and prevent overheating.
- **Storage:** Store the hair dryer in a dry place, away from direct sunlight and moisture.

## Troubleshooting

If you encounter any issues, refer to the following common troubleshooting steps:

- **No Power:** Ensure the power cord is securely plugged into a functional electrical outlet. Check if the outlet itself is working by plugging in another appliance.
- **Weak Airflow:** The filter cover may be obstructed. Unplug the device and clean the high-density filter as described in the Maintenance section.

- **Overheating:** The hair dryer has an overheating protection chip. If it shuts off unexpectedly, unplug it and allow it to cool down for several minutes. Clean the filter to ensure proper ventilation.
- **Attachments Not Staying On:** Ensure the magnetic attachments are properly aligned and fully seated onto the hair dryer nozzle.

For issues not resolved by these steps, please contact customer support.

## Specifications

Feature	Detail
Product Dimensions	3.54 x 9.9 x 3.15 inches
Weight	1.7 Pounds
Wattage	1600 watts
Power Source	Corded Electric
Hair Type Compatibility	All
Number of Speeds	3
Number of Heat Settings	7
Maximum Temperature	100 Degrees Celsius (170°F)
Material Type	Aluminum
Included Components	High speed hair dryer, user manual, collection nozzle, diffuser

## Warranty and Support

The aowoka Hair Dryer comes with a **2-Year Manufacturer Warranty**. This warranty covers defects in materials and workmanship under normal use.

For warranty claims, technical support, or any questions regarding your product, please contact aowoka customer service. Please have your model number (B0FK4D83LS) and purchase date available when contacting support.