

[Manuals.plus](#) /

› [mangoal](#) /

› mangoal STARVIS 2 Dash Cam, Model A Front 4K User Manual

mangoal Model A Front 4K

mangoal STARVIS 2 Dash Cam, Model A Front 4K User Manual

Model: Model A Front 4K | Brand: mangoal

INTRODUCTION

This manual provides comprehensive instructions for the installation, operation, and maintenance of your mangoal STARVIS 2 Front 4K HDR Dash Cam, Model A. Please read this manual thoroughly before using the product to ensure proper functionality and safety. Keep this manual for future reference.

WHAT'S IN THE BOX

Verify that all items listed below are included in your package. If any items are missing or damaged, please contact customer support.

- mangoal OEM Look 4K Dashcam x1
- 64GB Card x1
- User Manual x1
- Auto-Dimming Plug Adapter Cable x1
- Crowbar x1
- Strap x2
- T20 Star Screwdriver x1
- T25 Star Screwdriver x1

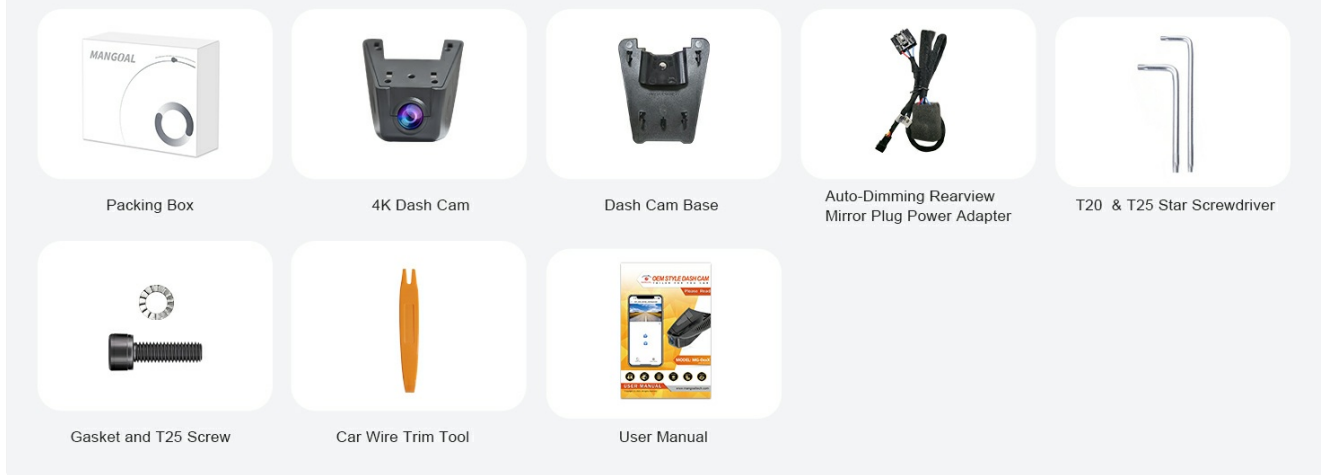


Figure 1: All included components of the mangoal Dash Cam package.

Note: The dash cam supports up to 512GB microSD cards, which may be purchased separately.

KEY FEATURES

- **4K STARVIS 2-Sensor Dash Cam:** Equipped with the IMX678 sensor for 4K 2160P resolution, capturing clear video day and night.
- **Custom Fit Design:** Specifically designed for Ford F150 (2018-2026), F150 Lightning (2022-2025), and F250/F350 Super Duty (2020-2026) Model A, integrating seamlessly behind the rearview mirror.
- **Night Vision with HDR 2.0:** Enhances low-light recording by balancing highlights and shadows for optimal clarity.
- **GPS Function:** Tracks driving route, speed, location, and history.
- **Faster 5GHz Wi-Fi & APP Control:** Allows for easy configuration, live preview, and video sharing via the dedicated mobile application.
- **Loop Recording:** Automatically overwrites the oldest videos when the memory card is full.
- **G-Sensor:** Detects collisions and automatically locks current video footage to prevent overwriting.
- **Parking Monitor:** Provides 24-hour surveillance when parked (requires optional hardware kit).
- **Built-In Microphone and Speaker:** For audio recording and playback.
- **Built-In Supercapacitor:** Ensures reliable operation in extreme temperatures and extends product lifespan.

Dual STARVIS 2 Sensors

Front 4K@30fps Recording

Superior Night Vision

Supreme 4K Front Recording

The front camera features a STARVIS 2 8MP image sensor, capturing impressive 4K resolution for sharper, more detailed footage. With a wider dynamic range and 4K HDR technology, this sensor reduces noise and motion blur, revealing greater image detail in both bright and low-light conditions.



Figure 2: The dash cam records in 4K at 30 frames per second.

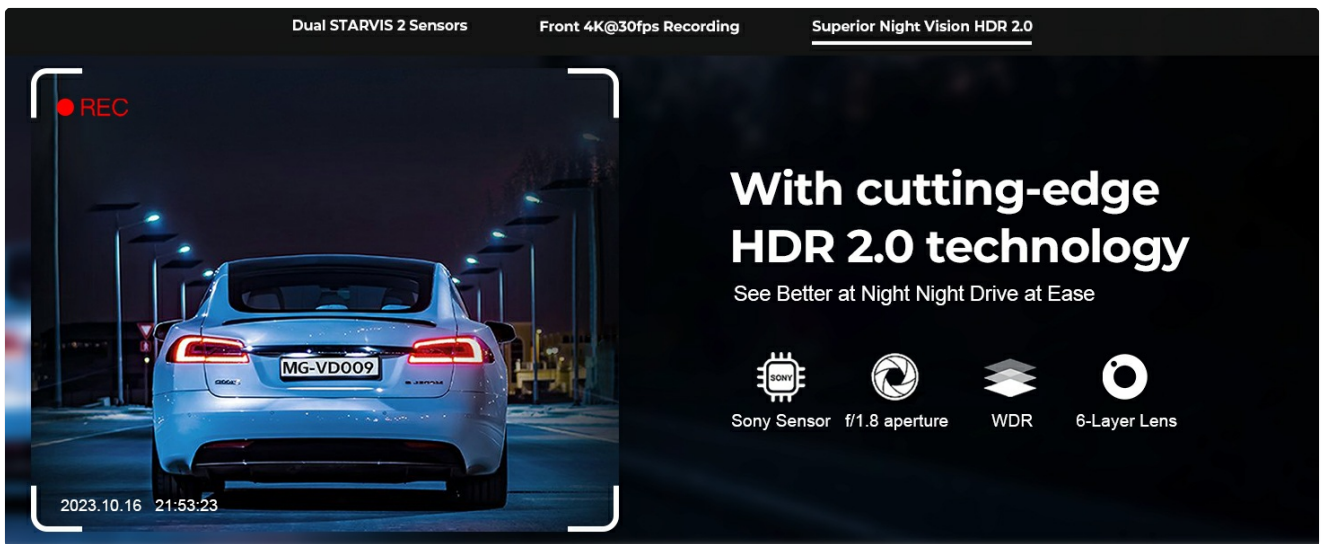


Figure 3: Superior Night Vision with HDR 2.0 technology.

SETUP AND INSTALLATION

The mangoal Dash Cam is designed for a custom, OEM-style fit. Please follow these steps carefully. It is recommended to watch the installation video for a visual guide.

1. Vehicle Compatibility Check

Ensure your vehicle is compatible with Model A. This dash cam is suitable for select Ford F-150 (2018-2026), F-150 Lightning (2022-2025), and F-250/F-350 Super Duty (2020-2026) models. Your car must have an Auto-Dimming Rearview Mirror Plug Power Adapter. If not, you will need to power the dash cam via OBD or a fuse box.

Compatible Models The new upgrade OEM Style Dash Cam

How to distinguish FORD F-series Model A/B/C?

Models	Model A	Model B	Model C
Feature	<ul style="list-style-type: none"> Has Screw Rearview Mirror Plug Sensor Cover 	<ul style="list-style-type: none"> Has Screw/NO Screw Has Sensor Cover/NO Sensor Cover Rearview mirror plug 	<ul style="list-style-type: none"> Big Cover
Fixed Modes	Screw	3M Tape	Replace the big cover
Power	Rearview Mirror Plug	Rearview Mirror Plug	Fall-rain sensor
Years	F-150 2018-2025 & F-250/350 Super Duty 2020-2025 F150 Lightning 2022-2025	F-150 2013-2017 & F-250/350 Super Duty 2015-2019	F150 2015-2020 & F250/350 Super Duty 2017-2019

* Mangoal integrated dash cams are only compatible with specific vehicle styles, the wrong styles can't fit.if stil not sure ,please confirm with us.

Figure 4: Guide to distinguish Ford F-series models for compatibility.

The Next Level OEM Style Dash Cam



Figure 5: Key features for identifying Model A compatibility: screw, rearview mirror plug, and sensor cover.

2. Physical Installation Steps

Follow these steps for a clean, integrated installation:

- 1. Remove the original screw:** Carefully remove the screw securing the rearview mirror bracket.
- 2. Mount the bracket with screw:** Attach the dash cam's bracket using the provided screw.
- 3. Mount the dash cam:** Slide the dash cam onto the mounted bracket until it clicks into place.
- 4. Use a crowbar to pry open the sensor cover:** Gently use the provided crowbar to open the vehicle's sensor cover near the rearview mirror.
- 5. Connect the rearview mirror with Y-cable:** Connect the Y-cable to the rearview mirror's power source and then to the dash cam. Ensure connections are secure.
- 6. Put the sensor cover back on:** Carefully reattach the sensor cover, ensuring all wires are neatly tucked away for an OEM look.

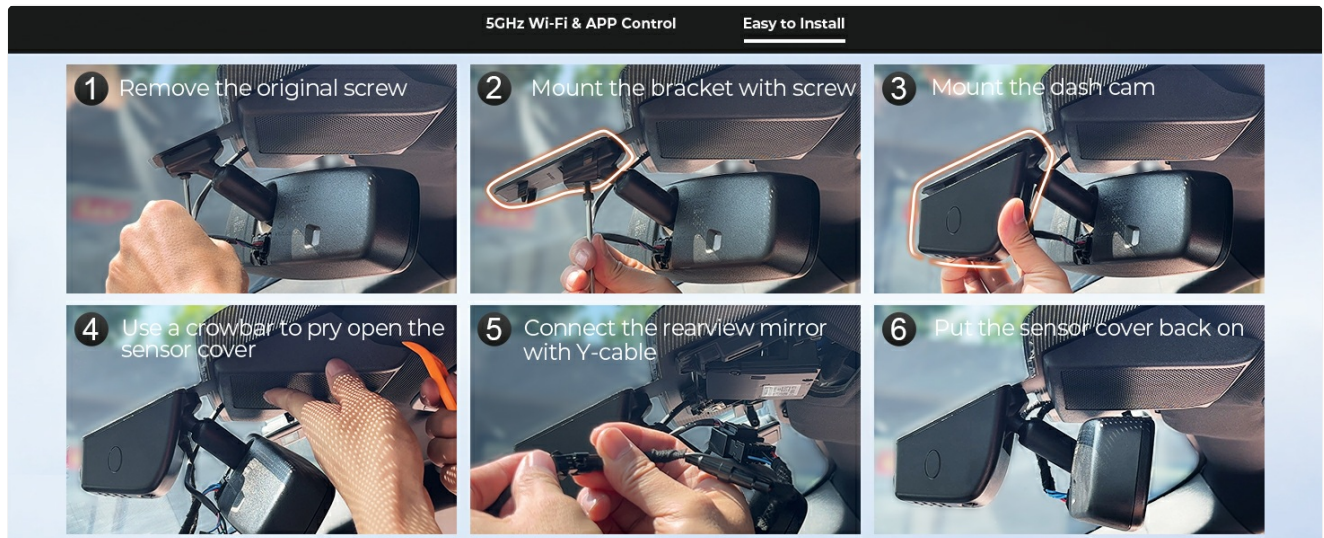


Figure 6: Step-by-step visual guide for dash cam installation.

Video 1: Detailed installation guide for the mangoal 4K Dash Cam, Model A, for Ford F150/F250/F350.

OPERATING INSTRUCTIONS

Your mangoal Dash Cam is controlled via a dedicated mobile application. Ensure the dash cam is powered on before proceeding.

1. App Connection and Initial Setup

1. **Download the App:** Search for "SkyCamm" in your mobile app store (Google Play or Apple App Store) and install it.
2. **Open the App:** Launch the "SkyCamm" app and click "Add Camera".
3. **Connect to Wi-Fi:** Go to your phone's Wi-Fi settings, find the camera's Wi-Fi network (e.g., "WIFI_DVR_XXXX"), and connect. Enter the default password if prompted (refer to the app or dash cam documentation for the default password).
4. **Return to App:** Go back to the "SkyCamm" app. It should automatically connect and display the camera's real-time view.
5. **Test Functionality:** Move the camera host to check if the picture is normal.
6. **Format SD Card:** For first-time use after installation, click "Camera Settings" then "Format SD Card" to clear all video and picture files. Confirm the operation.

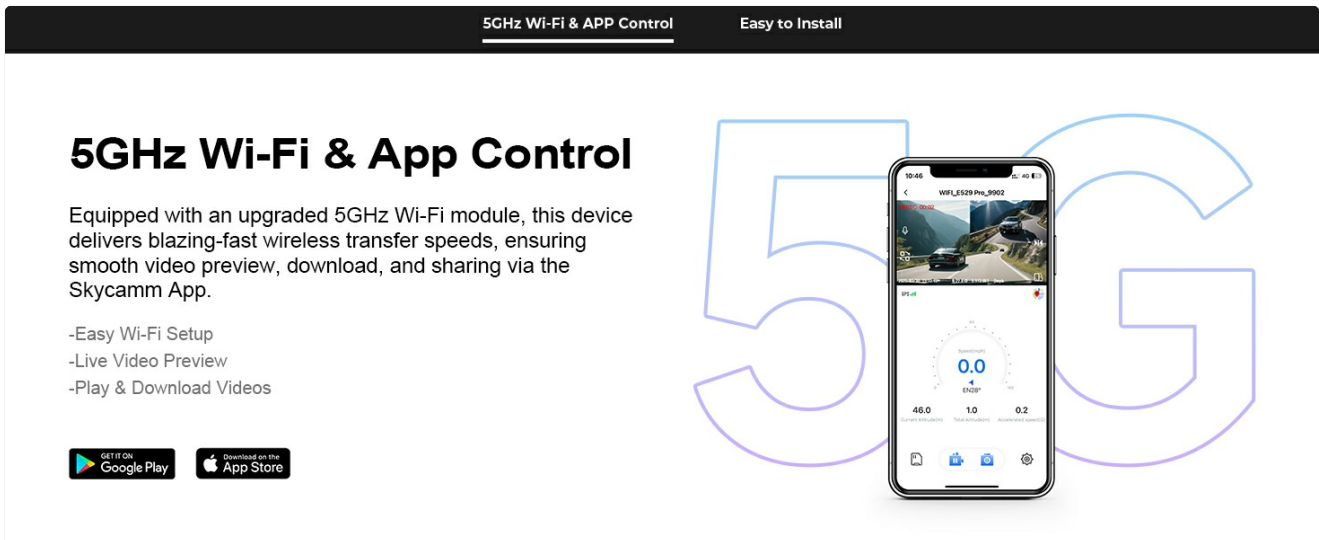


Figure 7: The SkyCamm app interface for 5GHz Wi-Fi control.

Video 2: Guide on connecting the dash cam to the mobile app and testing its functions.

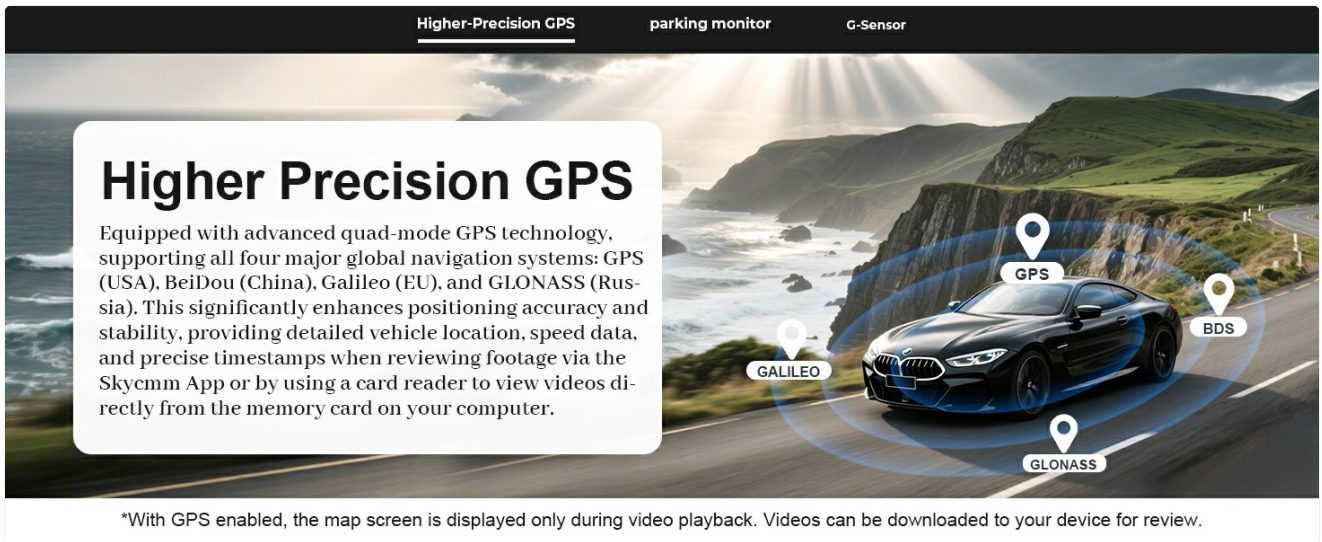
2. App Functions

- **Live Preview:** View real-time footage from the dash cam on your phone.
- **Camera File:** Access recorded videos and captured images. Downloaded files are automatically saved to your phone's album.
- **Camera Settings:** Adjust various settings including video resolution, loop recording options, exposure compensation, time stamp, WDR, collision sensing (G-Sensor sensitivity), and parking mode settings.
- **Capture Function:** Take still photos directly from the live view.

3. GPS Functionality

The integrated GPS module utilizes GPS, BeiDou, Galileo, and GLONASS systems to record precise location, speed, and time data. This information can be viewed during video playback via the SkyCamm App or by using a card reader to view files on your computer.

Higher-Precision GPS parking monitor G-Sensor



Higher Precision GPS

Equipped with advanced quad-mode GPS technology, supporting all four major global navigation systems: GPS (USA), BeiDou (China), Galileo (EU), and GLONASS (Russia). This significantly enhances positioning accuracy and stability, providing detailed vehicle location, speed data, and precise timestamps when reviewing footage via the Skycmm App or by using a card reader to view videos directly from the memory card on your computer.

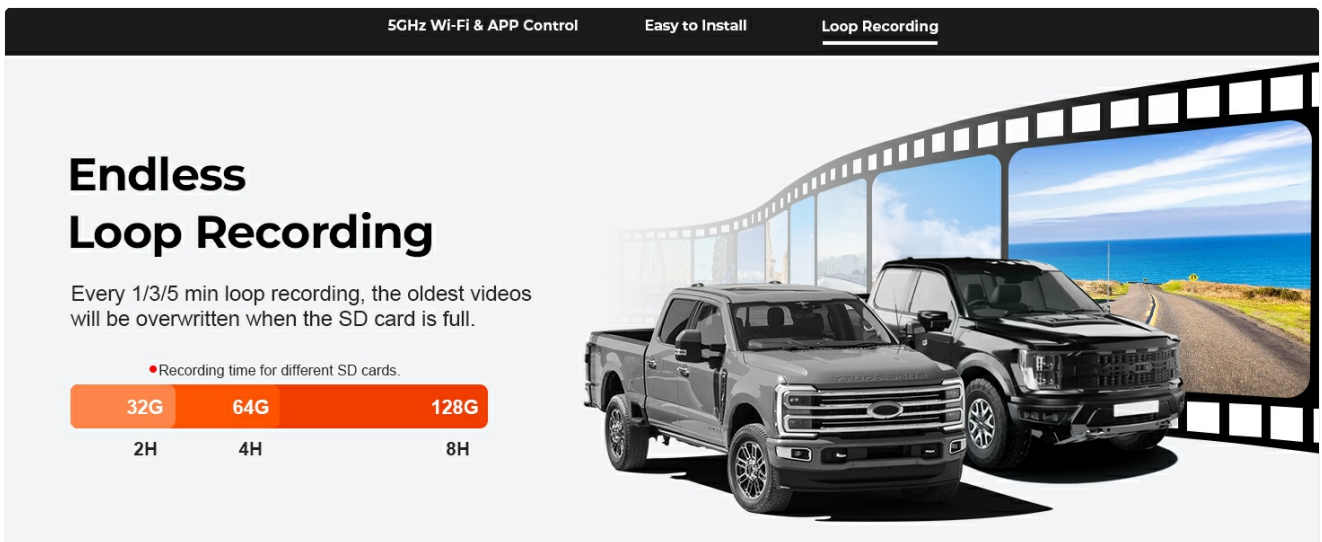
*With GPS enabled, the map screen is displayed only during video playback. Videos can be downloaded to your device for review.

Figure 8: Higher-Precision GPS tracking for detailed driving data.

4. Loop Recording and Storage

The dash cam records video in continuous loops (e.g., 1, 3, or 5-minute segments). When the microSD card is full, the oldest unprotected files are automatically overwritten. The included 64GB card provides approximately 4 hours of recording time. The system supports up to 512GB microSD cards for extended storage.

5GHz Wi-Fi & APP Control Easy to Install Loop Recording



Endless Loop Recording

Every 1/3/5 min loop recording, the oldest videos will be overwritten when the SD card is full.

32G	64G	128G
2H	4H	8H

• Recording time for different SD cards.

Figure 9: Explanation of seamless loop recording.

5. G-Sensor and Parking Monitor

The built-in G-Sensor detects sudden impacts or collisions and automatically locks the current video file to prevent it from being overwritten. The Parking Monitor feature provides 24-hour surveillance, recording when motion or impact is detected while the vehicle is parked. This feature requires an optional OBD Power Adapter (ASIN: B0CVTKTGYY) or Fuse Box Power Adapter (ASIN: B0CXXXV4YG).

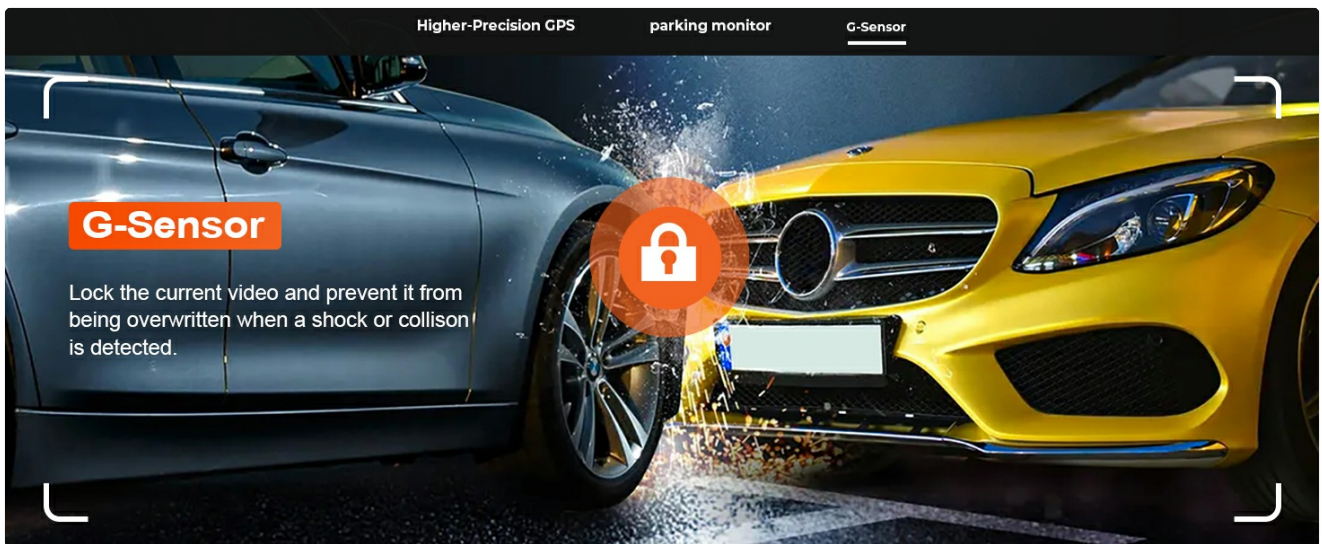


Figure 10: G-Sensor functionality for collision detection.

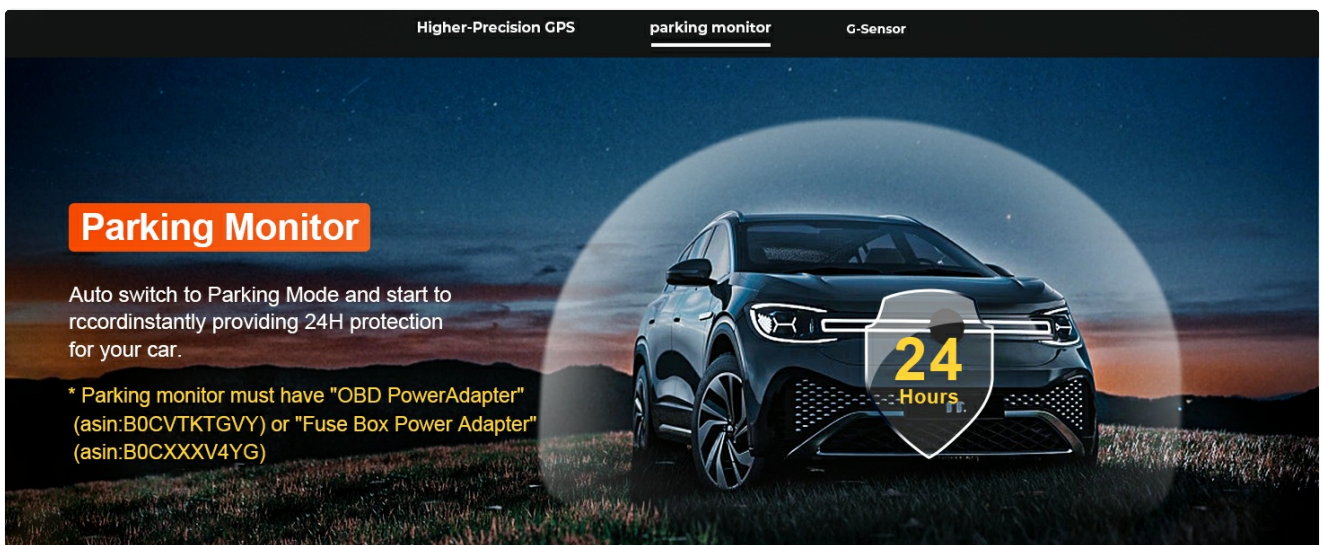


Figure 11: Parking Monitor feature for 24-hour vehicle protection.

MAINTENANCE

- **SD Card Maintenance:** Regularly format the microSD card (at least once a month) to prevent data corruption and ensure optimal recording performance. Use a high-quality, high-speed microSD card (Class 10 or higher, U3 recommended).
- **Cleaning:** Use a soft, dry cloth to clean the camera lens and body. Avoid using abrasive cleaners or solvents.
- **Firmware Updates:** Check the SkyCamm app periodically for firmware updates to ensure your dash cam has the latest features and bug fixes.
- **Temperature:** The dash cam is designed to operate within a specific temperature range. Avoid prolonged exposure to extreme heat or cold, which can affect performance and lifespan.

TROUBLESHOOTING

If you encounter issues with your dash cam, refer to the following common problems and solutions:

Problem	Possible Cause	Solution
Dash cam not powering on.	Loose power connection, vehicle power issue.	Check the Y-cable connection to the rearview mirror. Ensure the vehicle's ignition is on.

Problem	Possible Cause	Solution
Wi-Fi connection issues or Apple CarPlay not working.	Simultaneous Wi-Fi connections can conflict.	The dash cam's Wi-Fi connection may interfere with other Wi-Fi-dependent services like Apple CarPlay. Disconnect from the dash cam's Wi-Fi when not actively using the app for live view or file transfer.
Poor video quality or recording errors.	SD card issues (full, corrupted, incompatible), dirty lens.	Format the SD card via the app. Ensure you are using a compatible high-speed SD card. Clean the camera lens.
App not connecting to the camera.	Incorrect Wi-Fi password, phone not connected to camera's Wi-Fi.	Verify your phone is connected to the dash cam's Wi-Fi network and the password is correct. Restart both the dash cam and the app.
Parking monitor not working.	Missing optional hardware kit.	The parking monitor requires a separate OBD or Fuse Box Power Adapter. Ensure it is correctly installed.

SPECIFICATIONS

- **Product Dimensions:** 8.6 x 3.8 x 2.14 inches
- **Item Weight:** 1.95 pounds
- **Batteries:** 1 Lithium Metal battery required (included)
- **Connectivity Technologies:** Wi-Fi (5GHz)
- **Special Features:** STARVIS 2 Sensor IMX678, Night Vision HDR 2.0, Faster 5GHz Wi-Fi & APP Control, Advanced GPS Function, Built-In Microphone, Built-In Speaker, Built-In Supercapacitor, OEM Style, Motion Sensing, Mute Function, Loop Recording, G-Sensor, Automatic Incident Detection, Parking Monitor
- **Color:** Black
- **Manufacturer:** mangoal
- **Model Name:** STARVIS 2
- **Vehicle Service Type:** Ford F150 2018-2026, F250/F350 Super Duty 2020-2026
- **Video Capture Resolution:** Front 4K
- **Mounting Type:** Windshield Mount
- **Field Of View:** 150 Degrees

WARRANTY AND SUPPORT

Your mangoal Dash Cam comes with a standard manufacturer's warranty. For specific warranty details, including duration and coverage, please refer to the warranty card included in your product packaging or contact mangoal customer support directly. For technical assistance, troubleshooting, or any product-related inquiries, please visit the official mangoal website or contact their customer service team. Keep your purchase receipt as proof of purchase for warranty claims.