

## TARARIUM WP-590F-UV8

# TARARIUM WP-590F-UV8 Aquarium UV Filter with Scientific Timer User Manual

Model: WP-590F-UV8 | Brand: TARARIUM

## 1. INTRODUCTION

The TARARIUM WP-590F-UV8 Aquarium UV Filter is an all-in-one device designed to maintain a clean and healthy aquatic environment. It combines multiple functions including filtration, UV sterilization, aeration, and wave making. This filter is suitable for both marine and freshwater tanks, as well as turtle tanks, ranging from 40 to 150 gallons.

Key features include:

- **Double Filtration:** Utilizes a biochemical sponge and a 254nm UV lamp for comprehensive water clarification and odor reduction.
- **Multi-functional:** Acts as a filter, air pump, wave maker, and water changer.
- **Adjustable Settings:** Features adjustable airflow and water outlet direction for optimal fish comfort.
- **Automatic Timer:** The UV lamp and pump can be set to operate on a daily cycle of 3, 6, 12, or 24 hours.
- **Low Water Level Operation:** Can operate effectively in water levels as low as 3.6 inches.

## 2. PRODUCT COMPONENTS

The TARARIUM WP-590F-UV8 filter includes the following main components:

- Filter Unit Housing
- Submersible Pump
- Biochemical Filter Sponge
- UV Lamp (254nm)
- Baffle (for UV lamp protection)
- Air Tube with Adjuster

- Adjustable Spout
- Timer Control Unit

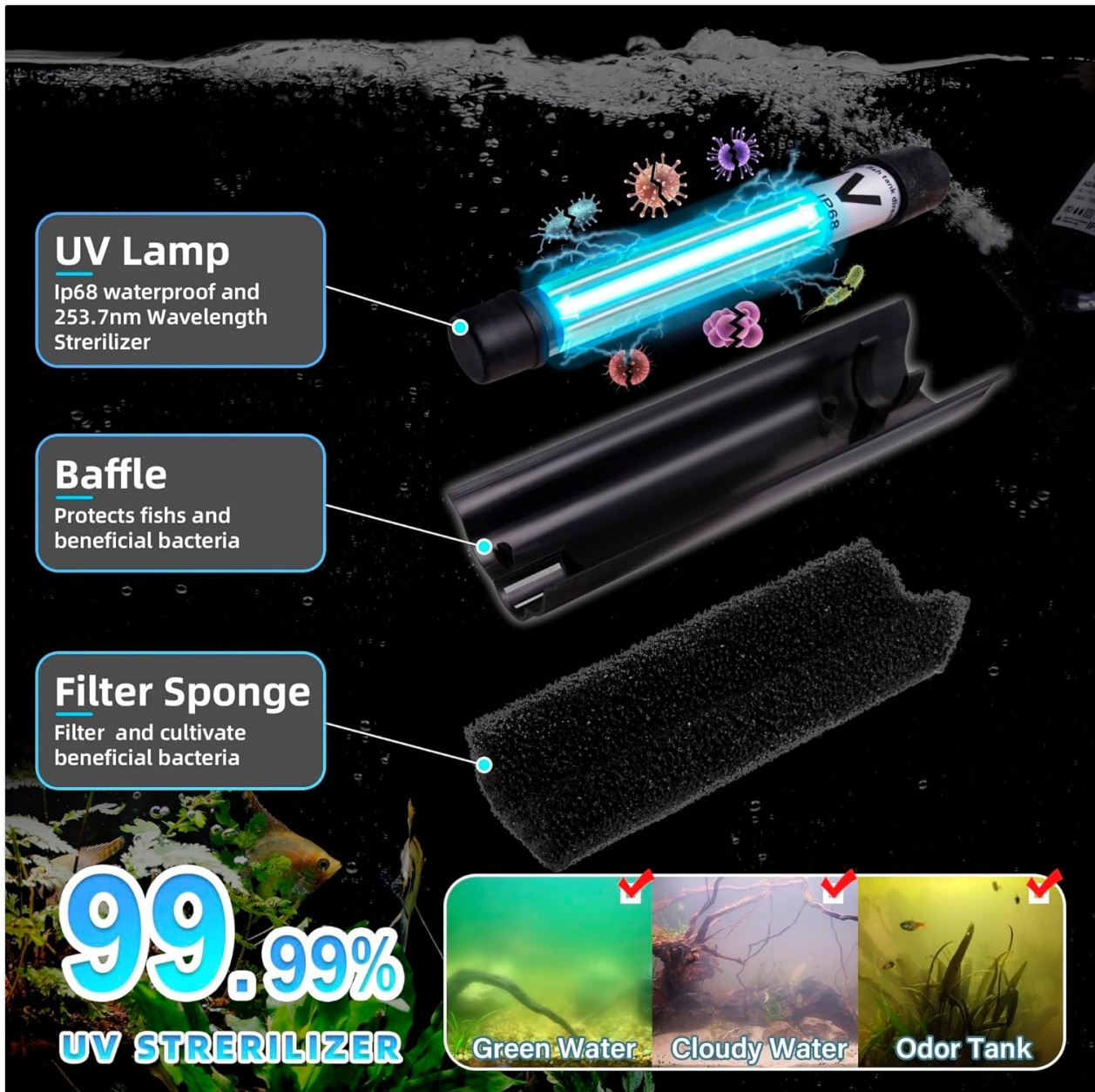


Figure 1: Exploded view of filter components including UV lamp, baffle, and filter sponge.

### 3. SETUP AND INSTALLATION

Follow these steps to properly set up and install your aquarium filter:

1. **Assembly:** Carefully unpack all components. Attach the submersible pump to the main filter unit. Insert the UV lamp into its designated housing, ensuring it is securely connected. Place the biochemical filter sponge inside the filter unit.
2. **Placement:** The filter is designed for internal use and must be fully submerged in the aquarium water. It can be placed vertically or horizontally. Ensure the minimum water level is at least 3.6 inches (approximately 9.1 cm) above the filter's intake.
3. **Air Tube Connection:** If using the aeration feature, connect the air tube to the designated port on the pump. The air tube should extend above the water surface.
4. **Power Connection:** Connect the filter's power cord to the timer control unit, and then plug the timer control unit into a suitable power outlet.

# Installation Instructions

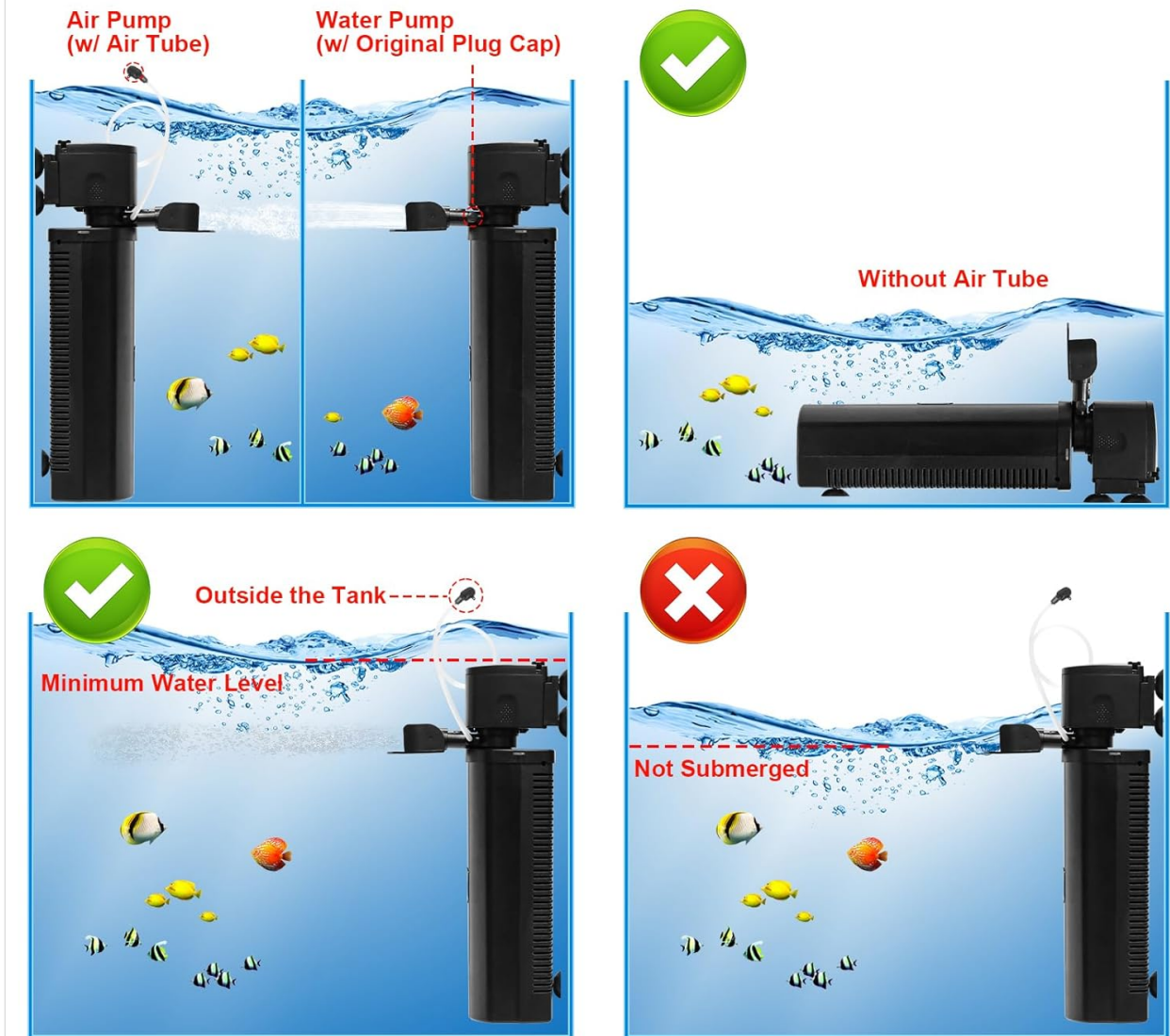


Figure 2: Correct and incorrect installation methods for the filter.

Video 1: This video provides an overview of the filter's components and assembly, highlighting its 4-in-1 functionality for cleaning, aeration, and UV sterilization in both saltwater and freshwater environments.

## 4. OPERATING INSTRUCTIONS

The TARARIUM WP-590F-UV8 filter offers versatile operation modes:

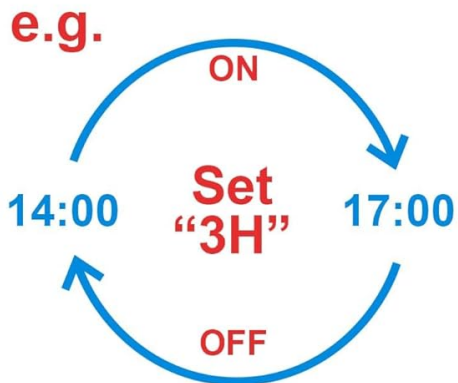
### 4.1. Automatic Daily Cycle Timer

The UV lamp and pump can operate independently. Use the timer control unit to set the desired working duration for the UV lamp. The timer starts from the set time and repeats daily.

- Press the 'Cycle' button to select 3, 6, 12, or 24 hours.
- The UV lamp will automatically turn off after the set duration and repeat the cycle daily.
- If power is cut off, the timer will restart from the set time once power is restored.

# UV INTELLIGENT TIMING

## AUTOMATIC DAILY CYCLE after the First Setting



**Automatic Daily Cycle**







-  Set "3h" (Work for 3 hours, resume normal work after 21 hours)
-  Set "6h" (Work for 6 hours, resume work after 18 hours)
-  Set "12h" (Work for 12 hours, resume work after 12 hours)
-  Set "24h" (Work for all time)

Figure 3: Automatic daily cycle timer settings.

### 4.2. UV Light Indicator

A visible indicator on the filter housing allows you to easily check if the UV light is operational.



Figure 4: UV indicator light on the filter housing.

### 4.3. Adjustable Airflow and Spout

The filter features adjustable airflow for aeration and a customizable water outlet direction, ensuring gentle water movement suitable for various fish species.



Figure 5: Demonstrates wave maker, air supply, and water pumping functions.

Video 2: A short video showcasing the filter's effectiveness in clarifying cloudy aquarium water, demonstrating the water flow and aeration within a tank.

Video 3: A brief video demonstrating the quiet operation of the aquarium filter while it effectively circulates and cleans water in a fish tank.

## 5. MAINTENANCE

Regular maintenance ensures optimal performance and longevity of your filter. It is recommended to clean the pump and filter media after each use or as needed to prevent blockages.

1. **Disassembly:** Unplug the filter from the power source. Carefully remove the filter unit from the aquarium. Disassemble the pump from the main filter housing. Remove the UV lamp and the biochemical filter sponge.
2. **Cleaning the Pump:** Rinse the pump components under clean water. Remove any debris or buildup from the impeller and pump housing.
3. **Cleaning the Filter Sponge:** Gently rinse the biochemical filter sponge in old aquarium water (to preserve beneficial bacteria) or dechlorinated tap water. Avoid harsh scrubbing, which can damage the

sponge structure.

4. **UV Lamp Care:** Wipe the UV lamp with a soft cloth to remove any mineral deposits. Do not use abrasive cleaners. Handle the UV lamp with care as it is fragile.
5. **Reassembly:** Reassemble all components in reverse order, ensuring all parts are securely fitted before returning the filter to the aquarium and plugging it back in.

*Video 4: This video demonstrates the daily maintenance process for the aquarium filter, including disassembling the pump and cleaning its components to ensure longevity and prevent blockages.*

## 6. TROUBLESHOOTING

If you encounter issues with your TARARIUM WP-590F-UV8 filter, consider the following common solutions:

- **Reduced Water Flow:** Check if the filter sponge is clogged. Clean the sponge and pump impeller as described in the maintenance section. Ensure the water outlet is not obstructed.
- **UV Light Not Working:** Verify that the timer is set correctly and the power supply is stable. Check the UV indicator light. If the lamp is old, it may need replacement.
- **Excessive Noise:** Ensure the pump is fully submerged and securely installed. Check for any foreign objects obstructing the impeller. Clean the pump if necessary.
- **Cloudy Water Persists:** Ensure the filter is running continuously or for sufficient duration. Check the condition of the filter sponge and UV lamp. Perform partial water changes if water quality issues persist.

## 7. SPECIFICATIONS

Feature	Specification
Model Name	WP-590F-UV8
Item Weight	1.81 pounds
Item Dimensions (LxWxH)	5 x 3 x 13 inches
Applicable Tank Size	40-150 Gallons
Flow Rate	290 GPH
UV Lamp Wavelength	254nm
Minimum Water Level	3.6 inches
Included Components	Aquarium filter unit
Specific Uses	Aquarium filter for fish and turtle tanks

## 8. WARRANTY AND SUPPORT

This product comes with a **6-month warranty** from the date of purchase. For any questions or problems, please contact TARARIUM customer support. Returns and replacements are typically accepted within 30 days of purchase, subject to the retailer's return policy.

