

## KAWA CJ4518

# KAWA 3K Dash Cam Front User Manual

Model: CJ4518

- [Overview](#)
- [Installation](#)
- [Introduction](#)
- [Package Contents](#)
- [Product](#)
- [Operation](#)
- [Specifications](#)
- [Troubleshooting](#)
- [Warranty & Support](#)

## 1. INTRODUCTION

This manual provides instructions for the installation, operation, and maintenance of your KAWA 3K Dash Cam Front (Model CJ4518). Please read this manual thoroughly before using the device to ensure proper functionality and safety. The dash cam is designed to record high-resolution video footage of your journeys, offering features such as voice control, Wi-Fi connectivity, G-sensor emergency recording, and 24-hour parking monitoring.



Image 1.1: KAWA 3K Dash Cam with key features highlighted.

## 2. PACKAGE CONTENTS

Verify that all items listed below are present in your package:

- 1620P 3K Dash Cam (x1)
- 32GB Micro SD Card (x1)
- User Manual (x1)
- 3M Adhesive Tape (x1)
- Electrostatic Stickers (x1)
- Split Car Charger (x1)

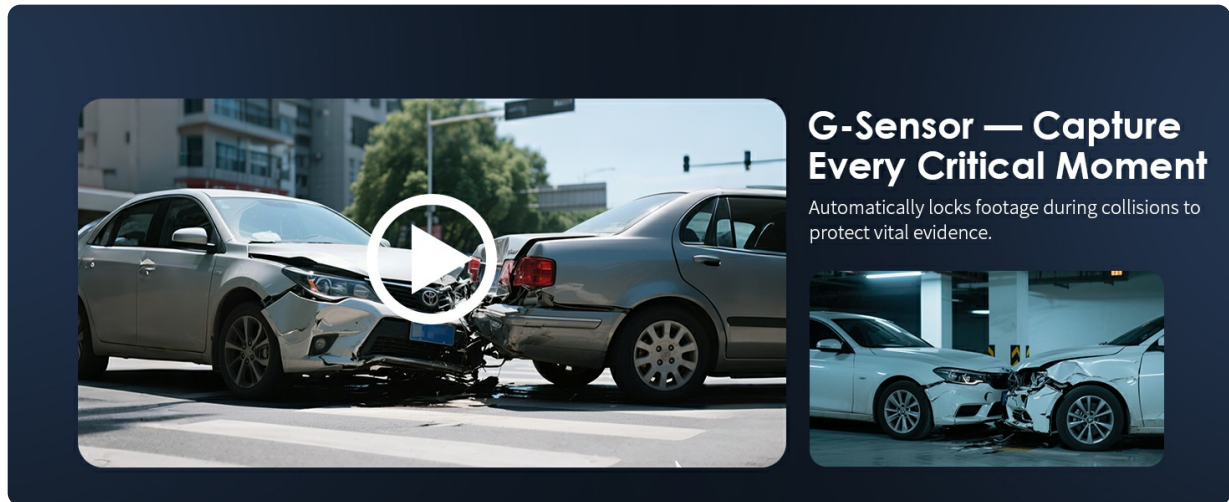


Image 2.1: All components included in the KAWA 3K Dash Cam package.

## 3. PRODUCT OVERVIEW

The KAWA 3K Dash Cam Front is a compact device designed for vehicle recording. It features a high-resolution lens, a power button, a Micro SD card slot, and a Type-C power port. The device is typically mounted on the windshield.

### 3.1 Key Features

- **3K 1620P Resolution:** Captures clear video footage.
- **NightEagle Enhanced Night Vision:** Improves visibility in low-light conditions.
- **Smart Voice Control:** Allows hands-free operation using voice commands.
- **Built-in Wi-Fi & App Control:** Connects to your smartphone for video management.
- **180° Video Flip Function:** Adapts to various mounting orientations.
- **Seamless Loop Recording:** Ensures continuous recording by overwriting old files.
- **G-Sensor Emergency Lock:** Automatically saves footage during impacts.
- **24H Parking Monitor:** Provides surveillance when the vehicle is parked (requires hardwire kit).
- **Super Capacitor:** Offers enhanced durability and temperature resistance compared to traditional batteries.

## 4. INSTALLATION

### 4.1 Micro SD Card Insertion and Formatting

1. Insert the provided 32GB Micro SD card into the dash cam's card slot. Ensure the card is inserted correctly until it clicks into place.

2. Press the power button 3 times to format the Micro SD card. This prepares the card for recording and ensures optimal performance.

## 4.2 Mounting the Dash Cam

The dash cam is designed for windshield mounting. Use the provided 3M adhesive tape and electrostatic stickers for secure placement.

1. Clean the desired area on your windshield thoroughly to ensure good adhesion.
2. Apply an electrostatic sticker to the cleaned area. This helps in easier removal and repositioning if needed.
3. Attach the 3M adhesive tape to the dash cam mount, then firmly press the mount onto the electrostatic sticker on the windshield. Ensure the camera lens has a clear view of the road.

## 4.3 Power Connection

Connect the dash cam to your vehicle's power supply using the provided split car charger and Type-C USB cable.

1. Plug the Type-C end of the cable into the dash cam's power port.
2. Plug the split car charger into your vehicle's cigarette lighter socket.
3. Route the cable neatly along the windshield and dashboard edges to avoid obstructing your view or interfering with driving.



Image 4.1: Illustration of dash cam installation and power cable routing in a vehicle.

## 5. OPERATION

### 5.1 Basic Recording

Once powered on, the dash cam will automatically begin recording. Video files are saved to the Micro SD card.

### 5.2 3K Ultra HD Recording

The dash cam records in 3K 1620P resolution, providing detailed video footage. This higher resolution captures more visual information compared to standard 1080P recordings.

## Overall Performance

# +45%

Upgraded main chip and image sensor reduce noise further and enhance video clarity.

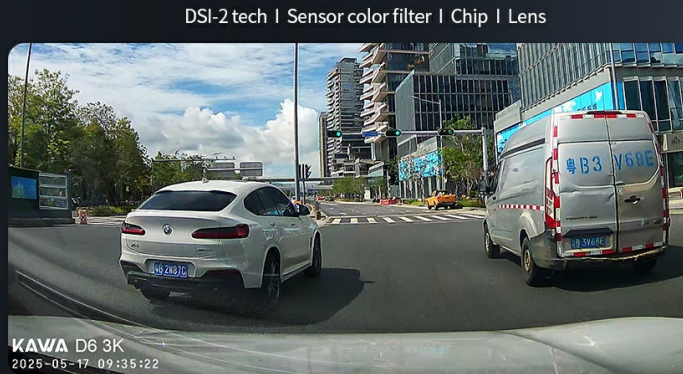


Image 5.1: Visual comparison demonstrating the clarity difference between 3K Ultra HD and 1080P video.

## 5.3 Smart Voice Control

Operate the dash cam hands-free using voice commands. This feature enhances driving safety by allowing you to control functions without diverting attention from the road.

- **"Take Photo"**: Captures a still image.
- **"Lock the Video"**: Protects the current recording from being overwritten.
- **"Turn On Audio"**: Activates audio recording.
- **"Turn Off Audio"**: Disables audio recording.
- **"Turn Off Wi-Fi"**: Disables the Wi-Fi connection.

## Night Vision

# +30%

Upgraded DSI-2 tech enhances night details, keeping plates and key info clear in low light.



Image 5.2: A driver interacting with the dash cam using voice commands for hands-free operation.

## 5.4 NightEagle Enhanced Night Vision

The NightEagle technology improves video clarity in low-light conditions, making details such as license plates more discernible during nighttime driving.



## Image Sensor **+40%**

Upgraded Color Filter sensor improves color accuracy, making videos more vivid and lifelike.

DSI-2 tech | Sensor color filter | Chip | Lens



Image 5.3: Side-by-side comparison of standard night vision versus NightEagle enhanced night vision.

### 5.5 Built-in Wi-Fi & App Control

Connect your dash cam to the KAWA AUTO smartphone application via Wi-Fi to manage recordings, adjust settings, and share videos.

1. Download the KAWA AUTO app from the App Store or Google Play.
2. Open the app and add your D6 3K dash cam.
3. On your smartphone, connect to the dash cam's Wi-Fi network (e.g., "kawa\_d63k\_5162"). The initial password can be found in the app or manual.
4. Follow the in-app instructions to complete the connection.



Image 5.4: Step-by-step guide for connecting the dash cam to the KAWA AUTO app via Wi-Fi.



## 180° Video Flip Flexible Installation

Adjust the shooting angle via the app. Flexible installation with no position limits. Supports both normal and upside-down mounting with correct image display.



Image 5.5: The KAWA AUTO app displaying options to view, download, and share recorded videos.

### 5.6 180° Video Flip Function

This feature allows you to rotate the video display by 180° via the app, providing flexibility for various mounting positions (e.g., upright or inverted) while ensuring the video is always correctly oriented.


KAWA D6 3K & D6 Specs Comparison							
Model	Video Resolution	180°Flip	Voice Control	Language	Power Port	Car Charger	Micro SD Card
 <b>D6 3K</b>	3K 1620P (2880 × 1620)	Support	English、日本語、 Русский язык、 Français、Tiếng Việt、 ภาษาไทย	For 19 countries	Type-C Port	Split-type	32GB included
VS VS VS VS VS VS VS VS							
<b>D6</b>	2K 1440P (2560 × 1440)	NO	English、日本語、 Русский язык、 Français	For 10 countries	Micro-B	Integrated	Not included

Image 5.6: Demonstrates the 180° video flip function for flexible installation on windshield or dashboard.

### 5.7 Seamless Loop Recording

The dash cam records continuously. When the Micro SD card is full, the oldest video files are automatically overwritten by new recordings, ensuring that recording never stops. Recording segments can typically be set to 1, 2, or 3 minutes.

## 3K Ultra HD vs Regular 1080P

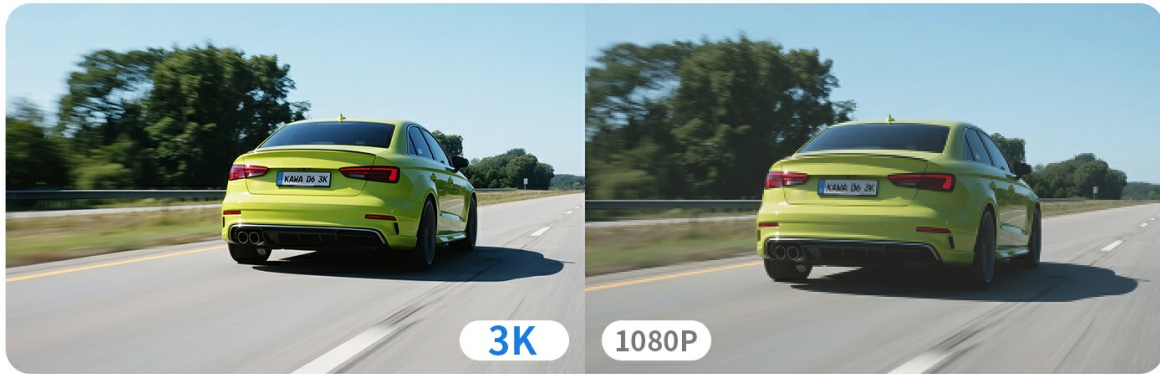


Image 5.7: Explanation of seamless loop recording and how different SD card sizes affect recording duration.

### 5.8 G-Sensor Protection

The built-in G-sensor detects sudden impacts or collisions. When an event is detected, the current video segment is automatically locked and saved to a protected folder, preventing it from being overwritten by loop recording. This ensures critical footage is preserved as evidence.

### Voice Control for Safer, Smarter Driving

No buttons, no reaching — just say the word to start recording, take a photo. KAWA D6 3K listens and reacts instantly, so you stay fully focused on the road ahead.

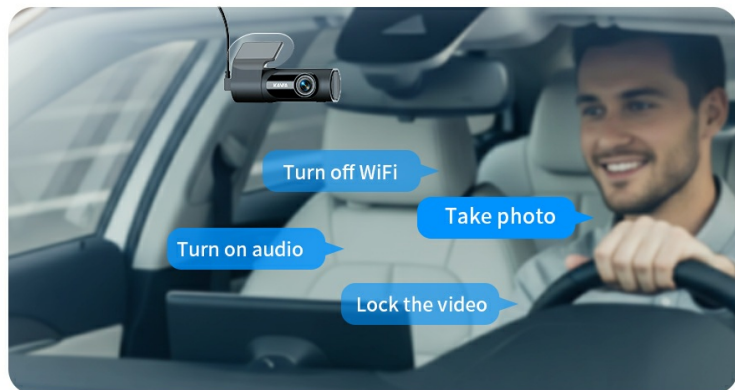


Image 5.8: Visual representation of the G-sensor activating during a collision to protect video evidence.

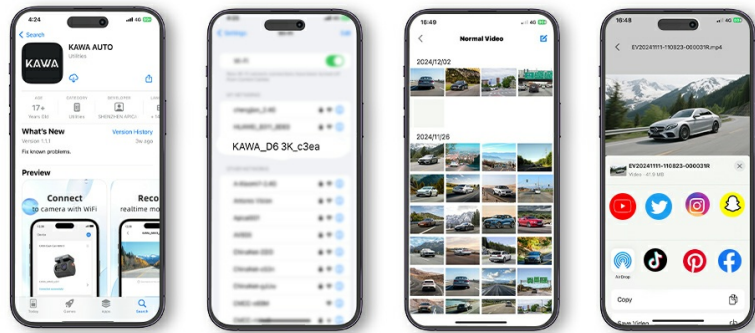
### 5.9 24H Parking Monitor

This feature provides continuous surveillance of your vehicle when it is parked. It can detect impacts or motion and automatically begin recording. **Note:** This feature requires an additional hardwire kit (not included) for continuous power supply.



## Built-in WiFi & APP Control

Connect to KAWA AUTO app to view videos anytime. Easily download and share videos without removing the SD card.



WiFi transmission distance is limited, recommended to transmit within a distance of 1.5 meters, stabler and speedier.

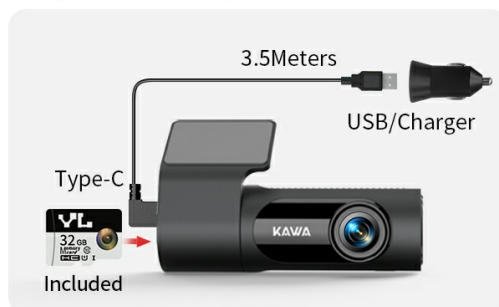
Image 5.9: A vehicle under 24/7 parking surveillance, indicating the area monitored by the dash cam.

### 5.9.1 Time-lapse Recording (Parking Mode)

When the hardwire kit is installed, the dash cam can record in time-lapse mode during parking surveillance. This condenses long periods of recording into shorter videos, saving storage space while still capturing important events.

## Split-type car charger cable

Flexibly power the D6 3K using either a USB port or a car charger without interfering with other in-car devices.



## Easy to install and use

Enables a more user-friendly hidden installation.



Image 5.10: Visual explanation of time-lapse recording in parking mode, showing how it compresses video duration.

### 5.10 Wide Dynamic Range (WDR)

The WDR function intelligently balances highlights and shadows in the video, ensuring clear and detailed footage even in challenging lighting conditions, such as entering or exiting tunnels, or driving against bright sunlight.



### NightEagle™ Engine

KAWA's night vision tech sharpens key details like license plates in low light, giving your dashcam clearer nighttime footage for safer driving.

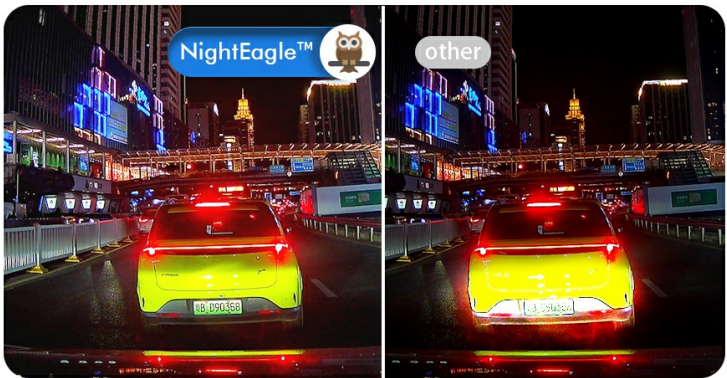


Image 5.11: Comparison of video quality with and without WDR in scenes with extreme light differences.

### 5.11 Super Capacitor

The dash cam utilizes a super capacitor instead of a traditional lithium-ion battery. This provides enhanced durability, a longer lifespan, and improved resistance to extreme temperatures (working temperature: -4°F to 158°F / -20°C to 70°C; storage temperature: -22°F to 176°F / -30°C to 80°C).



Image 5.12: Details on the super capacitor's benefits, including temperature resistance and durability.

### 5.12 Official Product Video

Your browser does not support the video tag.

Video 5.1: An official product video demonstrating the KAWA D6 3K Dash Cam's features and functionality, including Wi-Fi connectivity, voice control, 180-degree video flip, G-sensor emergency recording, 24-hour parking monitoring, and time-lapse video capabilities.

## 6. SPECIFICATIONS

Feature	Detail
Model Name	CJ4518
Video Capture Resolution	3K 1620P

Feature	Detail
Connectivity Technology	Wi-Fi
Special Features	Voice Control, Built-in WiFi, G-sensor, 24h Parking Monitoring, Time-lapse, WDR, Night Vision, Loop Recording
Mounting Type	Windshield Mount
Control Method	App, Push Button, Voice
Product Dimensions	1.2 x 4 x 2 inches
Item Weight	8.8 ounces
Included Components	1620P 3K Dash Cam, 32GB Micro SD Card, User Manual, 3M adhesive tape, Electrostatic Stickers, Split Car Charger

### Super Capacitor

Without Lithium-ion Battery.

Working Temp: **-4°F (-20°C) ~ 158°F (70°C)**

Storage Temp: **-22°F (-30°C) ~ 176°F (80°C)**



Ultra Durability,  
Longer Life



Fire & Explosion  
Resistant



Heat & Cold  
Resistant



Image 6.1: Detailed comparison of KAWA D6 3K specifications against the D6 model.

## 7. TROUBLESHOOTING

### 7.1 Dash Cam Not Turning On

- Ensure the power cable is securely connected to both the dash cam and the vehicle's power outlet.
- Check if the vehicle's power outlet (cigarette lighter) is functioning correctly. Test with another device if possible.
- Verify that the vehicle's ignition is on, as some outlets only provide power when the engine is running.

### 7.2 Recording Issues (e.g., not recording, corrupted files)

- Ensure the Micro SD card is inserted correctly and fully into the slot.
- Format the Micro SD card using the dash cam's formatting function (press power button 3 times). This can resolve many recording issues.
- If issues persist, try using a different, high-quality Micro SD card (Class 10 or higher, U3 recommended).
- Check if the loop recording feature is enabled and configured correctly in the app settings.

## 7.3 Wi-Fi Connection Problems

- Ensure the dash cam's Wi-Fi is enabled (check voice commands or app settings).
- Verify that you are connecting to the correct Wi-Fi network name displayed by the dash cam.
- Make sure your smartphone is within close proximity (within 1.5 meters) of the dash cam for a stable connection.
- Restart both the dash cam and your smartphone, then attempt to connect again.

## 7.4 Voice Control Not Responding

- Ensure the voice control feature is enabled in the dash cam's settings via the app.
- Speak clearly and directly towards the dash cam.
- Minimize background noise in the vehicle.

## 8. WARRANTY & SUPPORT

---

### 8.1 Warranty Information

KAWA provides a **1-year free replacement warranty** for this product from the date of purchase. This warranty covers manufacturing defects and malfunctions under normal use.

### 8.2 Customer Support

For any inquiries, technical assistance, or warranty claims, please contact KAWA customer support. We assure quick responses to all inquiries within 24 hours.

- **Email:** [support@kawa-in.com](mailto:support@kawa-in.com)