

CINOTON C5107-D

CINOTON Waterproof Connector C5107-D Instruction Manual

Model: C5107-D

1. INTRODUCTION

The CINOTON Waterproof Connector C5107-D is designed for securely connecting CINOTON Permanent Outdoor Lights, specifically RGBW/RGBCW lines. This connector ensures a waterproof and reliable connection, allowing for customization and extension of your lighting setup. This manual provides detailed instructions for installation and proper use.

2. WHAT'S IN THE BOX

- Waterproof Connector (Male-to-Female)

3. SPECIFICATIONS

Brand	CINOTON
Model Number	C5107-D
Package Dimensions	5.9 x 0.2 x 0.2 inches
Item Weight	7 ounces
Color	white
Connector Gender	Male-to-Female
Voltage	36 Volts
UL Listed	No

4. SETUP AND INSTALLATION

This section details the process of cutting, splicing, and extending your CINOTON Permanent Outdoor Lights using the Waterproof Connector. Follow these steps carefully to ensure a secure and functional connection.

4.1. Understanding the Connector

The CINOTON Waterproof Connector is designed for seamless integration with your existing permanent outdoor lights. It

features a male-to-female connection with three pins, ensuring proper electrical contact and weather resistance.



Figure 1: CINOTON Waterproof Connectors. These connectors are designed for secure and waterproof connections between light strands.

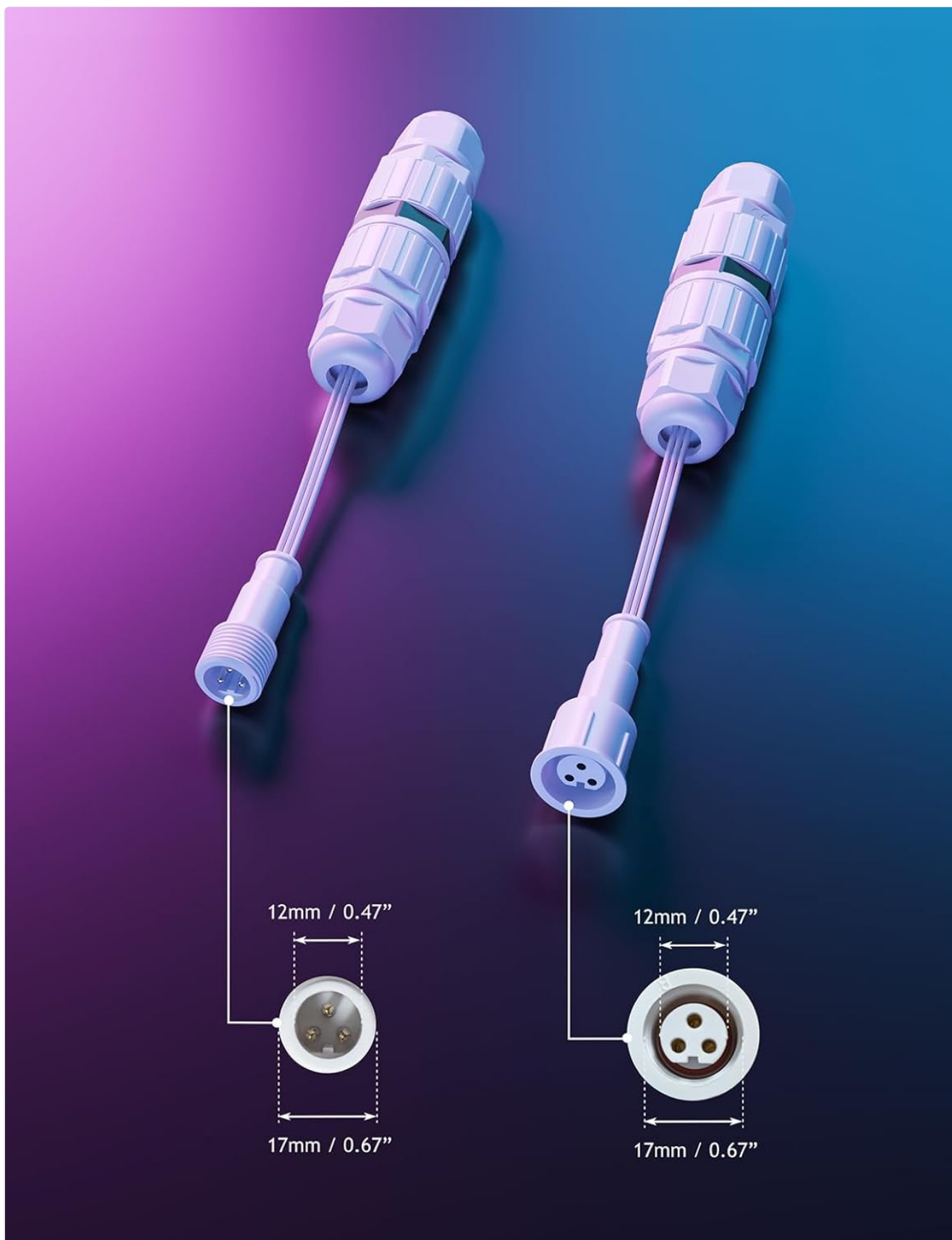


Figure 2: Connector Dimensions. The male and female connectors have a diameter of 17mm (0.67 inches) and pin spacing of 12mm (0.47 inches).

4.2. Cutting and Splicing Light Strands

To extend or repair your light strands, you may need to cut and splice them. This process requires careful attention to wire connections.

Your browser does not support the video tag.

Video 1: How to cut and connect CINOTON outdoor Lights. This video demonstrates the step-by-step process of preparing and connecting light strands using the waterproof connector.

1. **Prepare Tools and Disconnect Power:** Ensure you have appropriate wire strippers/cutters. Always disconnect the light strand from the power source before beginning any work.
2. **Unscrew the Connector:** If reusing a connector, carefully unscrew its components.
3. **Measure and Cut:** Measure the desired length of the light strand. Cut the string light in the middle of two light beads.
4. **Strip Wires:** Using professional tools, carefully strip off the outer insulation of the power cord to reveal the three insulated wires inside. Ensure the length of the exposed insulated wires is approximately 30 mm.
5. **Identify Wires:** The wires are typically color-coded or marked (e.g., 'Printing', 'Blank', 'Dashed line'). Match these to the corresponding color-coded slots (Red, Yellow, Blue) within the connector.
6. **Insert Wires into Connector:** Remove the caps from the connector components. Pass the power cord through the caps. Pull outwards to open the locking buckles on the connector's internal mechanism. Insert the exposed wires into their corresponding color-coded slots. Push back the locking buckles to secure the wires.
7. **Assemble Connector:** Firmly screw the connector components together. Push the silicone plug into the shell to ensure a waterproof seal.
8. **Test Connection:** Once assembled, plug the light strand back into the power source to check if the connection is working properly and all lights illuminate.



Figure 3: Preparation for splicing. Gather your tools and disassemble the waterproof connector.



Figure 4: Cutting and stripping wires. Use appropriate tools to expose the internal wires for connection.

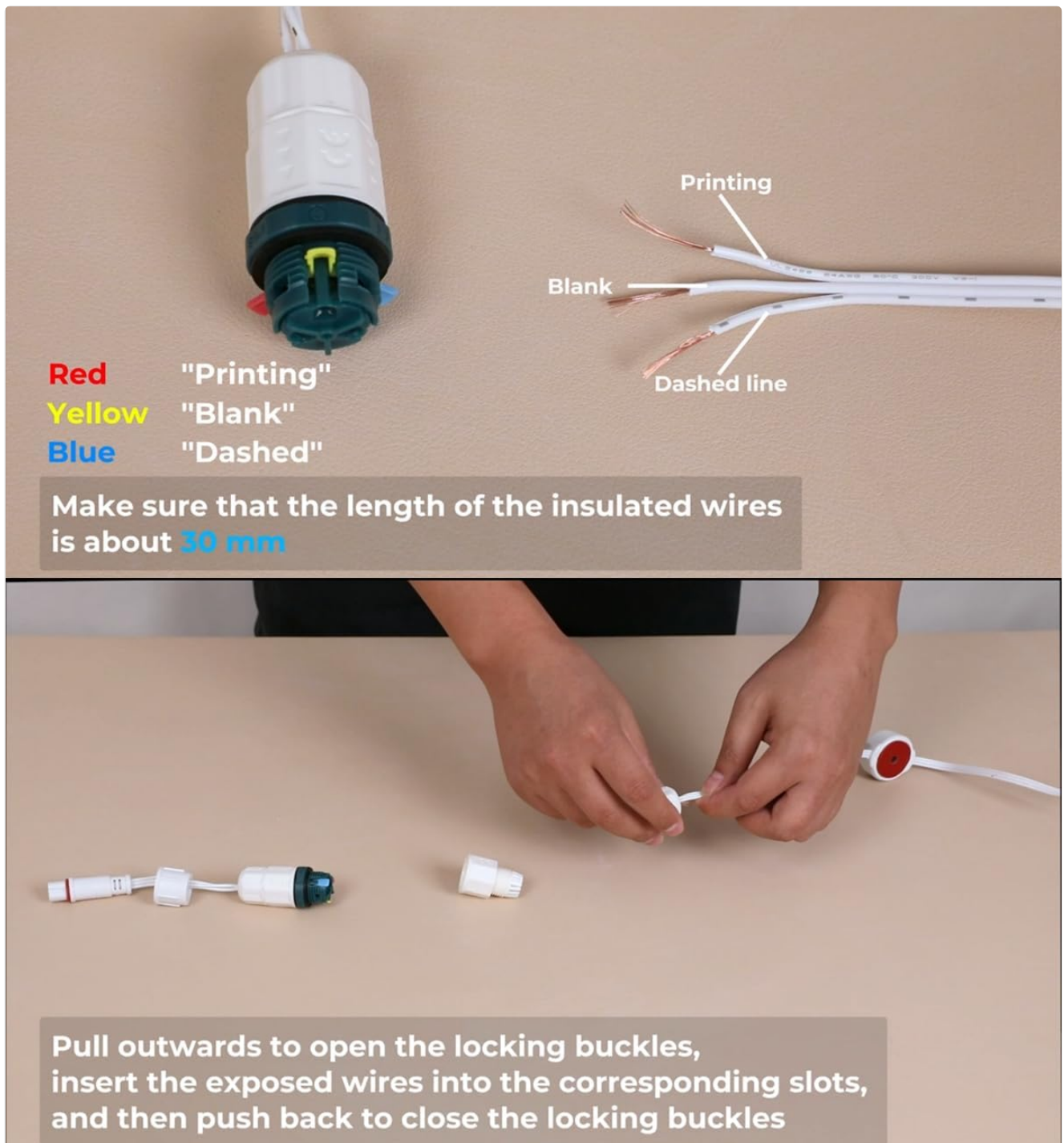


Figure 5: Wire identification and connector mechanism. Match the wires to the correct color-coded slots and open the locking buckles.

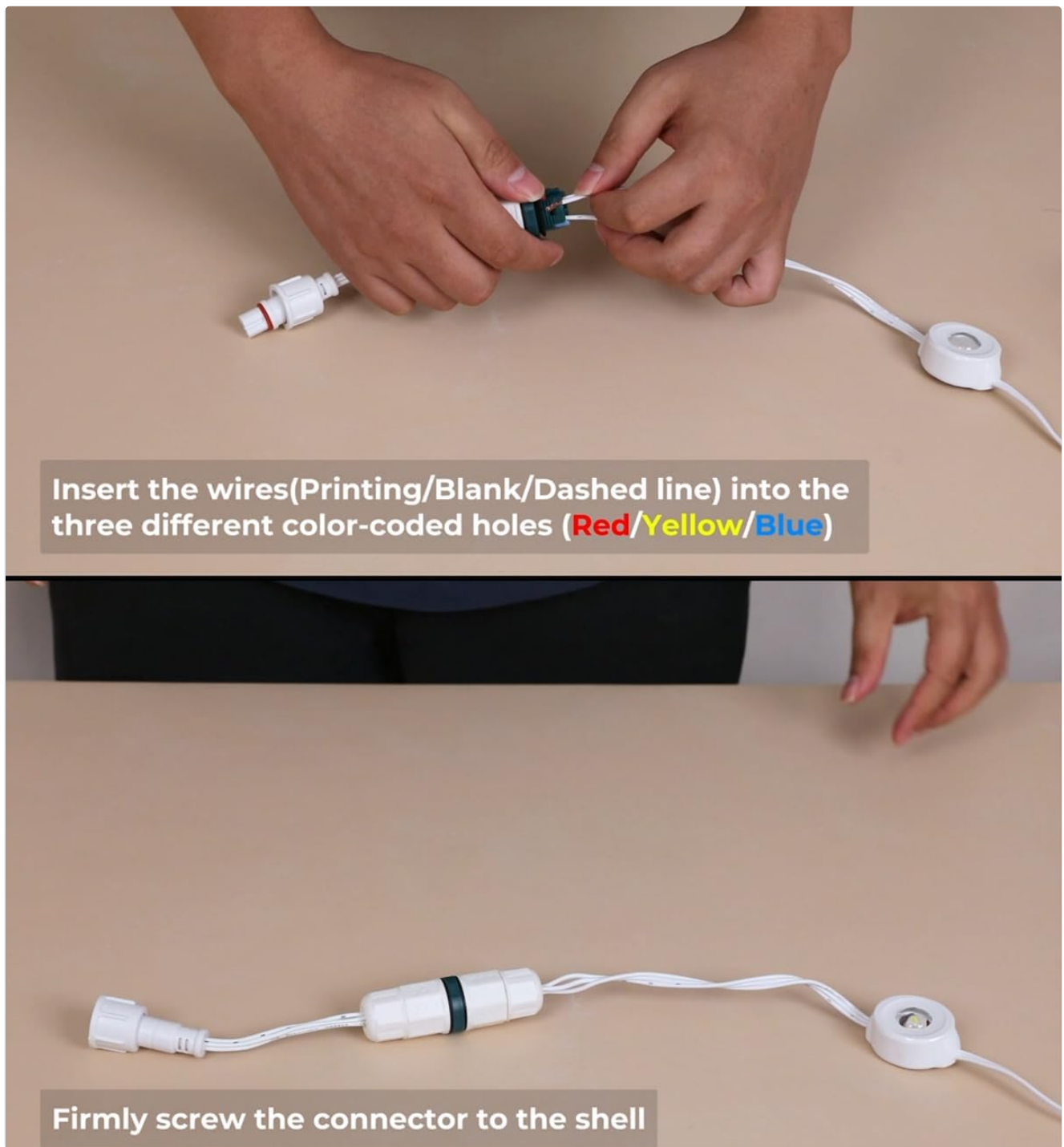


Figure 6: Inserting wires. Carefully place each exposed wire into its designated slot.

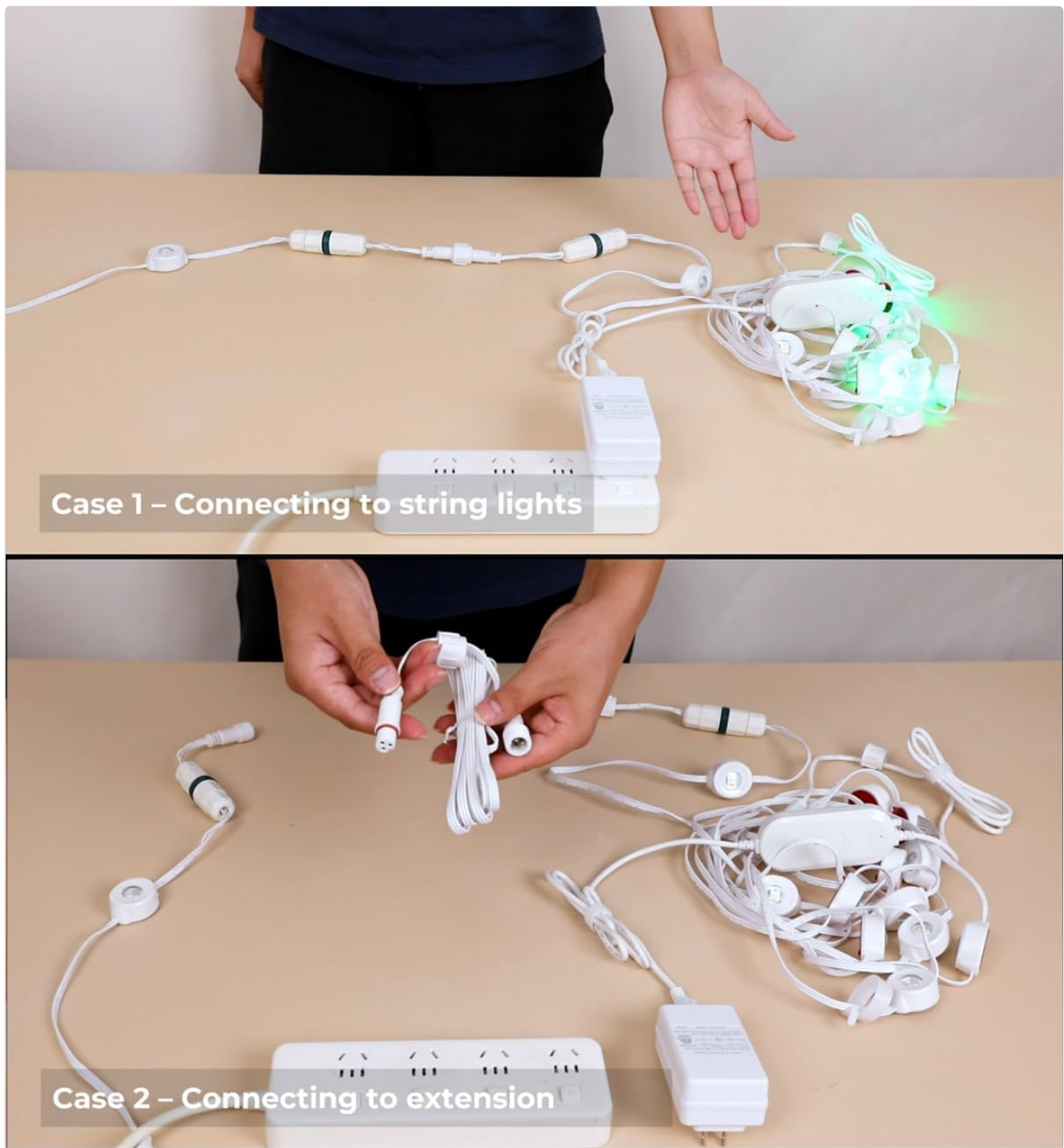


Figure 7: Final assembly and testing. Screw the connector firmly and verify the lights are working.

5. OPERATING THE CONNECTOR

The CINOTON Waterproof Connector is a passive component designed to facilitate electrical connection and provide weather protection. Once properly installed, it requires no further operation. Its function is to maintain a continuous and secure circuit for your outdoor lights.

6. MAINTENANCE

To ensure the longevity and optimal performance of your waterproof connector and light strands:

- **Regular Inspection:** Periodically inspect the connectors for any signs of wear, damage, or loose connections.
- **Cleanliness:** Keep the connectors free from dirt, debris, and moisture. A damp cloth can be used for cleaning, ensuring the connector is dry before reconnecting to power.

- **Secure Installation:** Ensure the connectors are always screwed tightly to maintain their waterproof seal.

7. TROUBLESHOOTING

If your lights are not functioning correctly after installing the connector, consider the following:


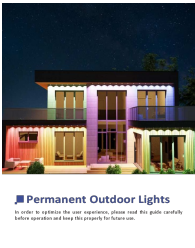

- **No Power:** Check the power source and ensure it is active.
- **Loose Connection:** Verify that all connector components are tightly screwed and the internal wires are securely fastened in their slots.
- **Incorrect Wiring:** Double-check that the wires are inserted into the correct color-coded slots as per the instructions.
- **Damaged Wires/Connector:** Inspect the wires and connector for any visible damage. If damage is found, replace the affected component.



8. WARRANTY AND SUPPORT

For warranty information or technical support regarding your CINOTON Waterproof Connector, please refer to the product packaging or contact CINOTON customer service directly. Keep your purchase receipt for warranty claims.

© 2025 CINOTON. All rights reserved.

Related Documents - C5107-D

	Cinoton Smart Ceiling Light User Manual and Installation Guide Comprehensive user manual for the Cinoton Smart Ceiling Light (Model STR-CL-001). Includes installation steps, app setup, voice assistant integration with Alexa and Google Assistant, troubleshooting, specifications, and FCC compliance information.
	CINOTON FL35-200W-50K-P LED Flood Light User Manual User manual for the CINOTON FL35-200W-50K-P LED Flood Light, detailing lighting parameters, specifications, certifications, and applications for outdoor lighting.
	Sunco Lighting SH-C5107-B Permanent Outdoor LED Lights - User Guide & Specifications Detailed information on Sunco Lighting's SH-C5107-B Permanent Outdoor LED Lights, including features, product data, dimensions, installation, and app usage. IP65 rated, Bluetooth & Wi-Fi compatible.
	Sunco Lighting SH-C5107-B02 Permanent Outdoor LED RGBW Lights - User Manual & Specifications Detailed user manual and specifications for Sunco Lighting's SH-C5107-B02 Permanent Outdoor LED RGBW Lights. Features include 16 million colors, Bluetooth/Wi-Fi control, timer functions, and IP65 rating.

	<p>Meihua B04-21SP-H-D Solar Spotlights User Manual - Outdoor Garden Lighting</p> <p>Comprehensive user manual for Meihua B04-21SP-H-D solar spotlights. Learn about installation, operation, features, and specifications for these IP66 waterproof outdoor garden lights available in warm, neutral, and cool white.</p>
	<p>Waterproof LED Lights Glowsubs - Instructions and Specifications</p> <p>User manual and technical specifications for MANIA Waterproof LED Lights Glowsubs, including package contents, how to use, warnings, and warranty information.</p>