

[Manuals.plus](#) /

› [Misolant](#) /

› Misolant Drafting Chair with Footrest Ring User Manual

Misolant Drafting Chair with Footrest Ring

Misolant Drafting Chair with Footrest Ring User Manual

Model: Drafting Chair with Footrest Ring

1. INTRODUCTION

Thank you for choosing the Misolant Drafting Chair with Footrest Ring. This chair is designed to provide ergonomic support and comfort for various environments, including standing desks, bars, labs, and counter-height workstations. Its adjustable features and durable construction ensure a reliable and comfortable seating experience. Please read this manual thoroughly before assembly and use to ensure proper function and longevity of your chair.





Image 1.1: Misolant Drafting Chair with Footrest Ring, Brown.



Image 1.2: The Misolant Drafting Chair positioned at a standing desk in an office environment.

2. SAFETY INFORMATION

To prevent injury and damage to your chair, please observe the following safety guidelines:

- Do not stand on the chair.
- Do not use the chair as a step stool.
- Ensure all bolts and screws are securely tightened before use. Periodically check and re-tighten as necessary.
- Do not exceed the maximum weight capacity of 300 lbs (136 kg).
- Keep children away from moving parts during adjustment.
- Use the chair on a level surface to prevent tipping.
- Avoid exposing the chair to direct sunlight or extreme temperatures to prevent material degradation.

3. PACKAGE CONTENTS

Please verify that all components are present before beginning assembly. If any parts are missing or damaged, please contact customer support.

- Backrest
- Seat Cushion
- Gas Lift Cylinder
- Footrest Ring
- Chair Base (with 5 legs)
- Casters (5 pieces)
- Mounting Plate (for seat)
- Hardware Pack (screws, Allen wrench)

4. SETUP (ASSEMBLY INSTRUCTIONS)

Assembly typically takes approximately 25 minutes. Follow these steps carefully:

1. **Attach Casters to Base:** Insert each of the five casters into the holes at the end of the chair base legs until they click securely into place.
2. **Insert Gas Lift:** Place the gas lift cylinder into the center hole of the chair base.
3. **Assemble Footrest Ring:** Slide the footrest ring over the gas lift cylinder. Secure it at your desired height using the adjustment knob on the footrest ring.
4. **Attach Mounting Plate to Seat:** Align the mounting plate with the pre-drilled holes on the underside of the seat cushion. Secure it with the provided screws and Allen wrench. Ensure the front of the plate aligns with the front of the seat.
5. **Attach Backrest to Seat:** Connect the backrest support frame to the back of the seat cushion using the designated screws.
6. **Connect Seat Assembly to Gas Lift:** Carefully place the assembled seat (with mounting plate and backrest) onto the top of the gas lift cylinder. Press down firmly to ensure a secure connection.

After assembly, test all adjustments and ensure the chair is stable before regular use.

5. OPERATING INSTRUCTIONS

Your Misolant Drafting Chair offers several adjustable features for personalized comfort.

5.1. Height Adjustment

To adjust the chair's height:

- **To raise:** While standing, pull the height adjustment lever upwards. The chair will rise automatically. Release the lever at the desired height.

- **To lower:** While seated, pull the height adjustment lever upwards. The chair will lower. Release the lever at the desired height.



Image 5.1: Detail of the height adjustment lever located under the seat.

LEVEL 3 SAFETY GAS LIFT

Stable, safe and sturdy

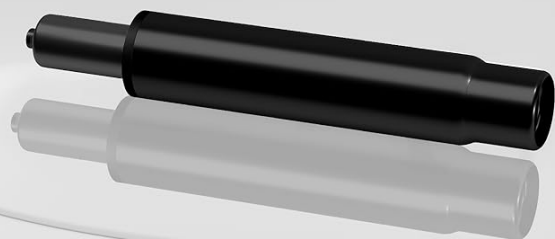


Image 5.2: Illustration of the chair's adjustable height range, accommodating various desk heights.

5.2. Footrest Ring Adjustment

The footrest ring can be adjusted vertically to support your feet comfortably at different chair heights.

- Locate the knob on the side of the footrest ring.
- Loosen the knob by turning it counter-clockwise.
- Slide the footrest ring up or down to your preferred position.
- Tighten the knob by turning it clockwise to secure the footrest in place.

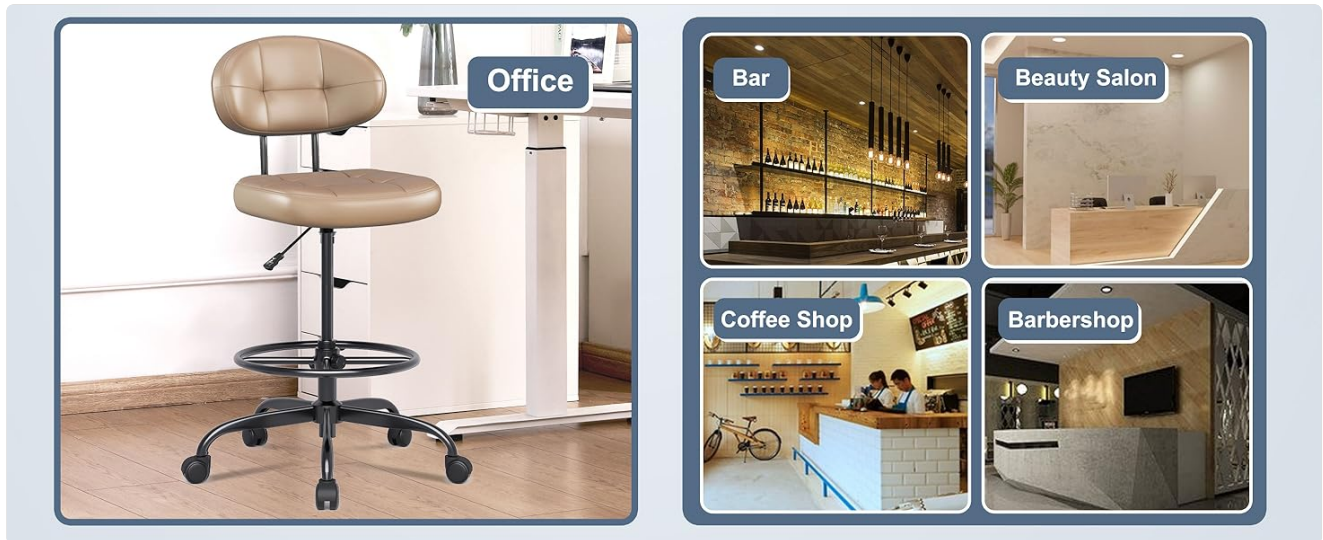


Image 5.3: Diagram illustrating the adjustment mechanism for the footrest ring.

5.3. Backrest Ergonomics

The chair features an ergonomically designed backrest with a unique wrap-around curve to provide optimal lumbar support and promote good posture.

ERGONOMICALLY DESIGNED BACKREST



Curved Backrest

The unique curved curve design fully wraps the waist of the human body, full of wrapping feeling, and provides strong support for the waist and back.



Bionic L-shaped Ergonomic Design

The thickened and widened seat cushion has strong support and bearing capacity

Image 5.4: Visual representation of the curved backrest design for ergonomic support.

6. MAINTENANCE

Regular maintenance will help preserve the appearance and functionality of your Misolant Drafting Chair.

- **Cleaning:** For the faux leather upholstery, wipe with a soft, damp cloth. For stubborn stains, use a mild soap solution and wipe dry immediately. Avoid harsh chemicals or abrasive cleaners.
- **Hardware Check:** Periodically inspect all screws and bolts to ensure they are tight. Re-tighten as needed to maintain stability.
- **Caster Care:** Keep casters free of hair, dust, and debris to ensure smooth rolling. Clean with a soft brush or cloth.
- **Gas Lift:** The gas lift is maintenance-free. If you experience issues with height adjustment, refer to the troubleshooting section.

7. TROUBLESHOOTING

If you encounter any issues with your chair, refer to the following common problems and solutions:

Problem	Possible Cause	Solution
Chair does not adjust height	Gas lift cylinder malfunction or lever not engaged.	Ensure the lever is fully pulled. If the issue persists, the gas lift may need replacement. Contact support.
Chair wobbles or feels unstable	Loose screws or uneven floor.	Check and tighten all assembly screws. Ensure the chair is on a flat, level surface.
Casters do not roll smoothly	Debris caught in casters or damaged casters.	Remove any hair or debris from the caster wheels. If damaged, casters may need replacement.
Footrest ring slides down	Adjustment knob is loose.	Tighten the footrest adjustment knob firmly.

8. SPECIFICATIONS

Detailed specifications for the Misolant Drafting Chair with Footrest Ring:

- **Brand:** Misolant
- **Model:** Drafting Chair with Footrest Ring
- **Color:** Brown
- **Material:** Faux Leather
- **Product Dimensions:** 19.68"D x 17.32"W x 40"H (Overall, minimum height)
- **Chair Height Range:** 35 to 43.4 inches
- **Cushion Height from Floor:** 23.5 to 31.9 inches
- **Seat Cushion Dimensions:** 16.5"W x 16.3"D x 2.8"H (Thickness)
- **Backrest Dimensions:** 16.7"W x 9.6"H
- **Base Diameter:** 25.1 inches
- **Special Feature:** Adjustable Height, Adjustable Footrest Ring, Ergonomic Backrest
- **Gas Lift:** SGS Certified Class-4 Gas Lift
- **Casters:** Hard-wearing PU material, 360° slide
- **Maximum Load Capacity:** 300 lbs

PRODUCT SIZE



Image 8.1: Detailed diagram illustrating the dimensions of the Misolant Drafting Chair.

16.5 INCH WIDE Seat Cushion

Natural Memory Foam with Adaptive Resilience:
Precision-engineered for Elevated Comfort Standards



**Skin-friendly
Faux Leather**



**Streamlined
Seams**



**Thickened
Memory Sponge**



**High Quality Sturdy
Wooden Plate**

Image 8.2: Cross-section view detailing the construction of the 16.5-inch wide seat cushion, including faux leather, memory foam, and a sturdy wooden plate.

DETAILS DEFINE QUALITY

Sturdy, Durable, Safety



15000 Times
SGS Certified Class-4 Gas Lift

360°Slide

Wear-resistant
Quiet
Protective floor



Image 8.3: Illustration highlighting the SGS certified Class-4 gas lift and the durable, quiet 360° sliding casters.

9. WARRANTY AND SUPPORT

Misolant is committed to providing exceptional service and product satisfaction.

- **Warranty:** Your Misolant Drafting Chair comes with a one-year warranty from the date of purchase. This warranty covers manufacturing defects and material flaws under normal use.
- **Customer Support:** For any questions, concerns, or assistance with assembly, operation, or warranty claims, please contact Misolant customer service. Refer to the product packaging or purchase documentation for contact details.

