

[Manuals.plus](#) /

› [Bellemave](#) /

› Bellemave Twin XL Loft Bed Frame Instruction Manual

## Bellemave WL000055TXLN

# Bellemave Twin XL Loft Bed Frame Instruction Manual

Model: WL000055TXLN

Brand: Bellemave

## 1. PRODUCT OVERVIEW

This manual provides detailed instructions for the assembly, operation, and maintenance of your Bellemave Twin XL Loft Bed Frame. This metal loft bed is designed to maximize space in smaller rooms, offering a sleeping area elevated above a versatile space for living, studying, or storage. It includes integrated storage stairs, a wardrobe, a bedside shelf, USB charging ports, and LED lighting.



Image 1.1: Overview of the Bellemave Twin XL Loft Bed Frame, showcasing its elevated design and integrated storage.

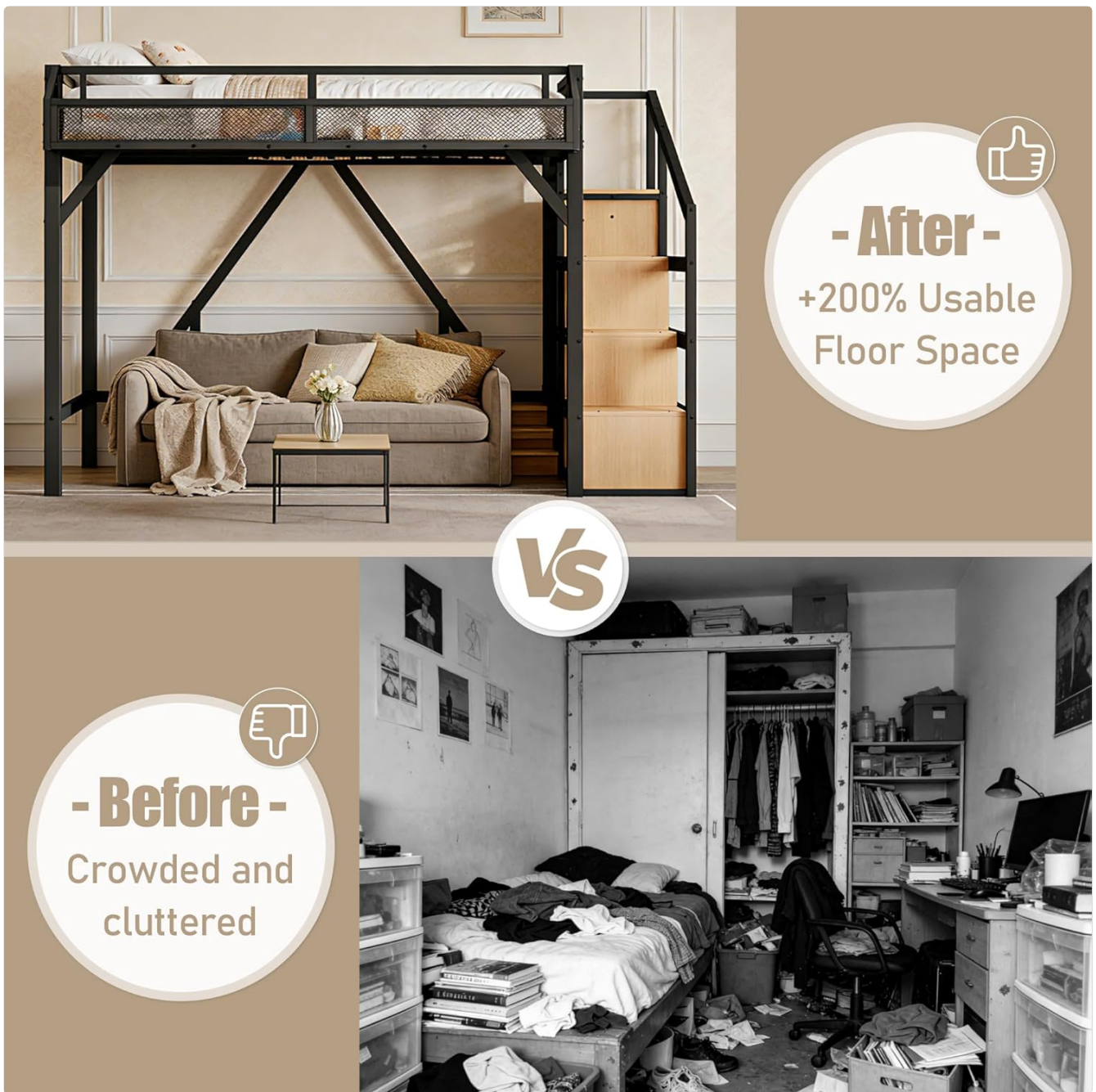


Image 1.2: Visual comparison demonstrating how the loft bed helps maximize usable floor space in a room.

## 2. SAFETY INFORMATION

Please read and understand all safety warnings before assembly and use. Failure to follow these instructions may result in serious injury.

- **Weight Capacity:** The maximum weight capacity for the bed is **350 pounds**. Do not exceed this limit. The listed product weight of 94 pounds refers to the shipping weight of the bed frame itself, not its load capacity.
- **Guardrails:** Ensure all full-length guardrails are securely installed as instructed to prevent falls.
- **Anti-Tip Kit:** Always use the provided anti-tip kit to anchor the bed frame to the wall. This is crucial for stability and preventing accidental tipping.
- **Mattress Thickness:** A mattress with a maximum thickness of **6 inches** is recommended to ensure the guardrails provide adequate safety height.
- **Electrical Safety:** Exercise caution when using the built-in USB ports and LED lighting. Ensure all connections

are secure and avoid exposing electrical components to liquids. Disconnect power before cleaning or maintenance.

- **Clearance:** Keep the area around the bed clear of obstructions to prevent tripping or falling, especially when ascending or descending the stairs.
- **Assembly:** Follow all assembly instructions carefully. Do not overtighten bolts, but ensure all connections are firm.



Image 2.1: Illustration of key safety features: full-length guardrails, anti-tip wall anchoring mechanism, and the robust industrial strength frame construction.

### 3. PACKAGE CONTENTS

Your Bellemave Twin XL Loft Bed Frame ships in two separate packages, which may arrive on different days. Please ensure both packages have arrived before beginning assembly. All necessary tools, clear instructions, and labeled parts are included.

#### Included Components:

- Bed Frame Components (Metal)
- Guardrails
- Headboard
- Slats
- Storage Stairs (Wood and Metal)
- Wardrobe Components (Wood and Metal)
- Assembly Hardware (Bolts, Screws, Allen Wrench)
- Anti-Tip Kit
- USB Charging Module
- RGB LED Strip and Remote Control

## 4. ASSEMBLY INSTRUCTIONS

Assembly requires two people for certain steps. Follow the included step-by-step instructions carefully. Do not discard packaging until assembly is complete and all parts are accounted for.

1. **Unpack and Identify:** Carefully unpack all components and lay them out. Verify all parts against the parts list in your separate instruction booklet. All parts are labeled with stickers for easy identification.
2. **Staircase Assembly:** Begin by assembling the storage staircase. This can largely be done by one person. Note that the staircase can be installed on either the left or right side of the bed frame to suit your room layout.
3. **Bed Frame Assembly:** Assemble the main metal bed frame structure. For stability, do not fully tighten all bolts until all components for a specific step are loosely fitted. Once aligned, gradually tighten all bolts.
4. **Install Slats and Guardrails:** Securely attach the bed slats and ensure all guardrails are properly installed.
5. **Integrate Storage and Wardrobe:** Install the wardrobe and shelf components into the staircase structure.
6. **Electrical Components:** Install the USB charging module and LED strip according to the instructions.
7. **Anti-Tip Kit:** Crucially, attach the anti-tip kit to the bed frame and securely anchor it to a wall stud.

*Tip: Using an Allen wrench bit with a drill can speed up the assembly process, but be careful not to overtighten.*



**Noise-Free  
Sleep**

## - Stairs Left/Right for Your Layout -



Image 4.1: Illustration demonstrating the reversible design of the storage stairs, allowing installation on either side of the bed frame.

Your browser does not support the video tag.

Video 4.2: An official product video demonstrating the features and assembly process of the Bellemave Loft Bed with Storage Stairs, Beside Shelf & Wardrobe.

## 5. OPERATING INSTRUCTIONS

### 5.1. USB Charging Ports

The integrated bedside shelf includes USB charging ports for convenient device charging. Simply plug your device's USB cable into the available ports. Ensure the bed frame's power cord is connected to a functional wall outlet.

### 5.2. RGB LED Lighting

The RGB LED strip provides customizable lighting for various moods and activities. Use the included remote control to operate the lights:

- **Power On/Off:** Press the power button on the remote.

- **Color Selection:** Choose from a variety of colors using the color buttons on the remote.
- **Brightness Adjustment:** Increase or decrease the light intensity using the brightness control buttons.
- **Mode Selection:** Select different lighting modes (e.g., flash, strobe, fade, smooth) for dynamic effects.
- **Speed Adjustment:** Adjust the speed of dynamic lighting modes.



## RGB LED & USB Hub

Set the Mood, Stay Charged



Image 5.1: Close-up of the RGB LED strip and USB charging hub, with the remote control for lighting adjustments.

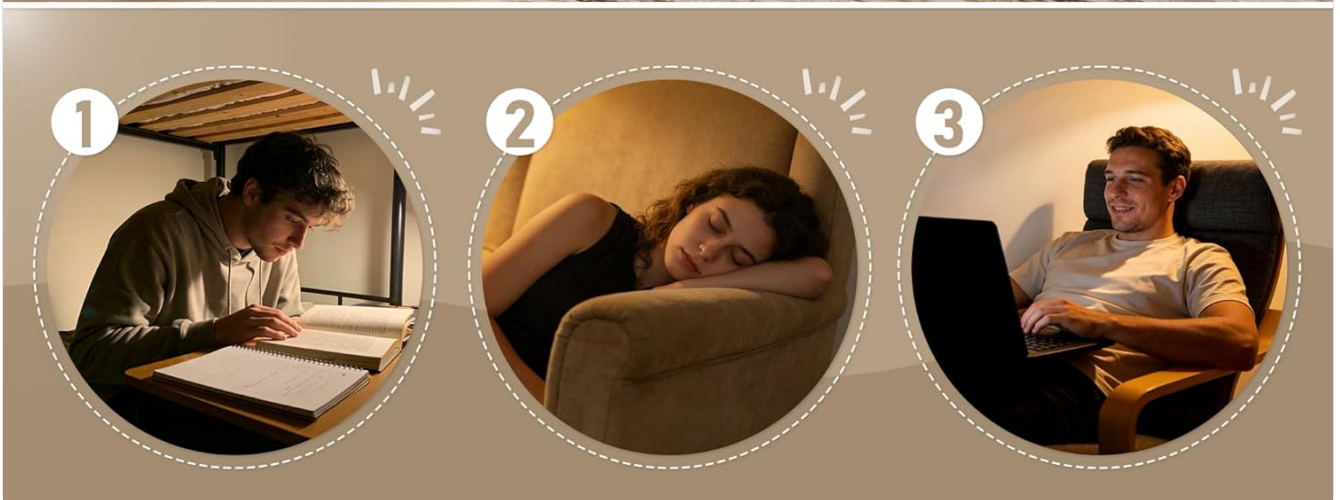


Image 5.2: Examples of how the LED lighting can be used to create different ambiances for studying, relaxing, or other activities.

## 6. MAINTENANCE AND CARE

Proper maintenance ensures the longevity and safety of your loft bed frame.

- **Cleaning:** Wipe metal surfaces with a soft, damp cloth. For wooden parts, use a dry or slightly damp cloth. Avoid harsh chemicals or abrasive cleaners that could damage the finish.
- **Hardware Check:** Periodically check all bolts and screws to ensure they remain tight. Retighten as necessary to maintain structural integrity.
- **Noise Reduction:** The bed frame incorporates rubber stoppers between slats and the frame to minimize noise. If squeaking occurs, inspect these stoppers and ensure all connections are tight.
- **Electrical Components:** Keep USB ports and LED lights free from dust and debris. Do not attempt to repair electrical components yourself; contact support if issues arise.

# Metal & Wood Finish

## Modern Industrial Aesthetic

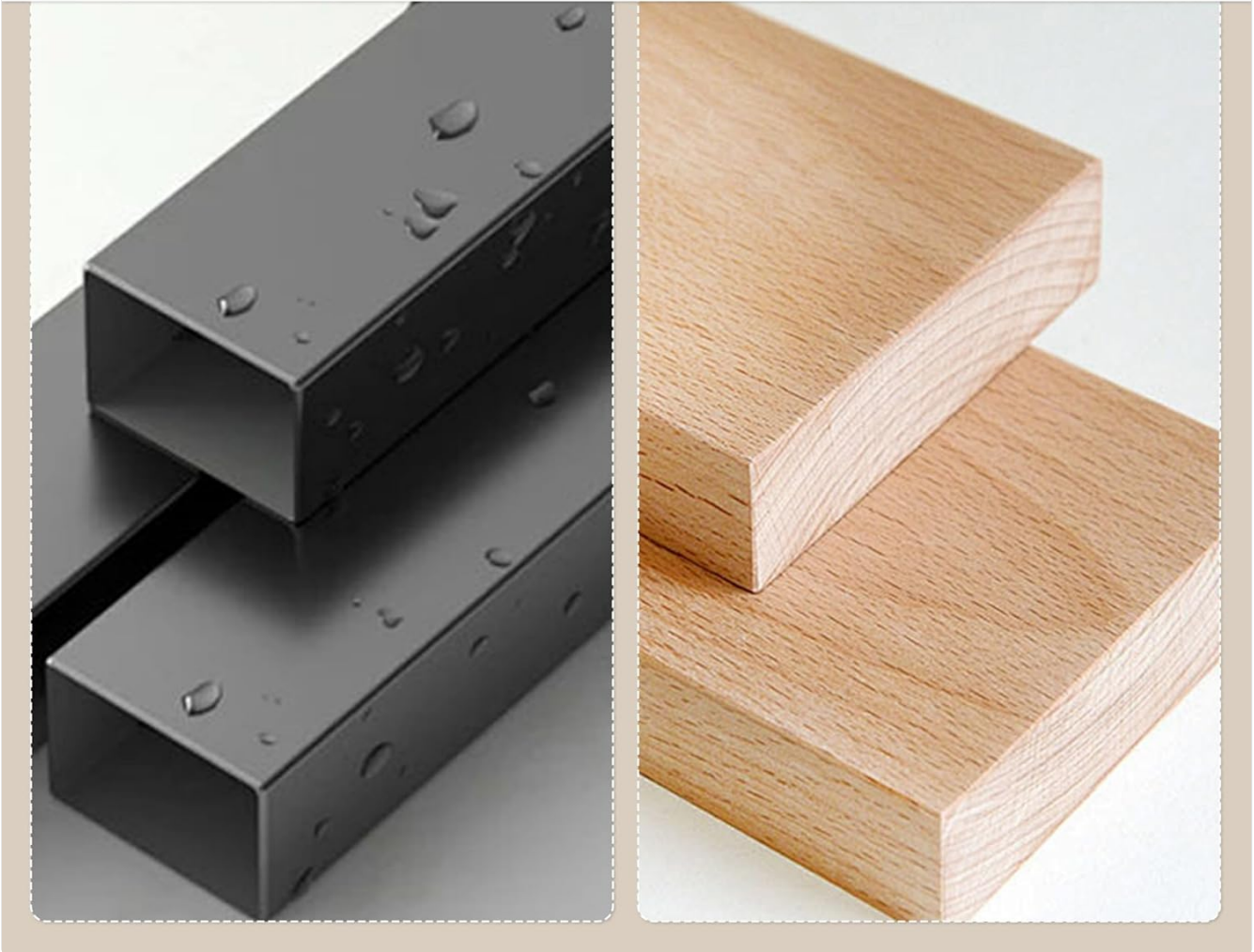


Image 6.1: Detail of the metal and wood finishes, showcasing the modern industrial aesthetic of the bed frame.

## 7. TROUBLESHOOTING

Problem	Possible Cause	Solution
Bed frame is wobbly or unstable.	Loose bolts; anti-tip kit not installed or improperly secured.	Ensure all bolts are tightened. Verify the anti-tip kit is correctly installed and anchored to a wall stud.
Squeaking noises from the bed.	Loose connections; missing or displaced rubber stoppers.	Check and tighten all bolts. Ensure rubber stoppers are correctly positioned between the slats and the frame.
USB ports not charging.	Power cord not plugged in; faulty outlet; damaged USB module.	Verify the bed's power cord is securely plugged into a working wall outlet. Test the outlet with another device. If issues persist, contact customer support.

<b>Problem</b>	<b>Possible Cause</b>	<b>Solution</b>
LED lights not working or remote unresponsive.	Remote battery dead; LED strip connection loose; faulty LED strip/remote.	Replace the remote control battery. Check the connection of the LED strip to its power source. If the problem continues, contact customer support.

## 8. SPECIFICATIONS

<b>Feature</b>	<b>Detail</b>
<b>Model Number</b>	WL000055TXLN
<b>Size</b>	Twin XL
<b>Material</b>	Metal (Frame), Wood (Storage components)
<b>Product Dimensions (L x W x H)</b>	96.9" x 39.4" x 63.4"
<b>Weight Capacity</b>	350 lbs
<b>Recommended Mattress Thickness</b>	6 inches
<b>Color</b>	Black & Natural
<b>Special Features</b>	Storage Stairs, Wardrobe, Beside Shelf, USB Ports, RGB LED Light, Full Guardrails, Anti-Tip Kit, Noise-Free Design

**Twin XL  
Size**

**350  
LBS**

**Mattress  
Not  
Included**

**Ships in 2 Boxes (Wait for Both!)**

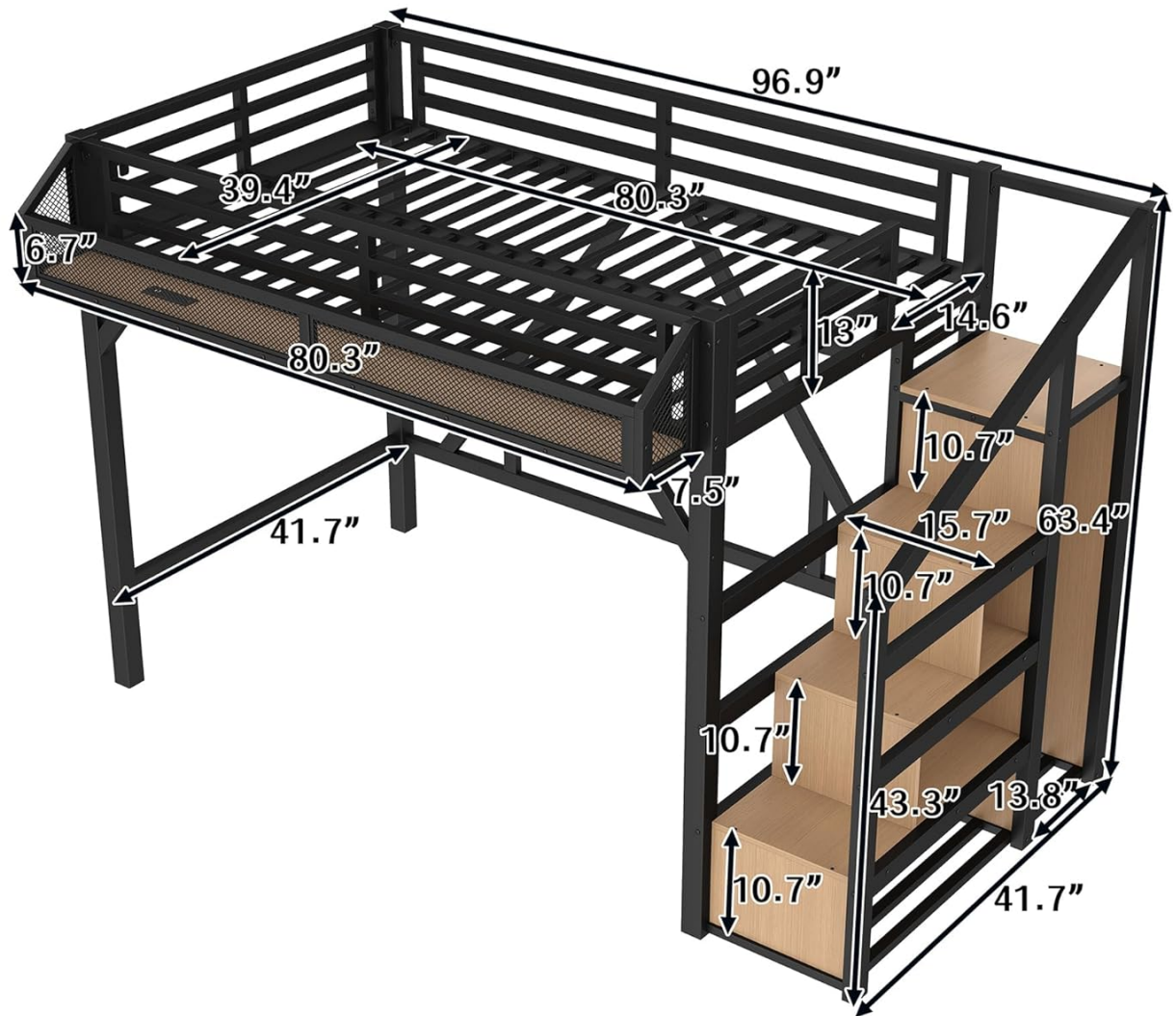


Image 8.1: Dimensional diagram of the Twin XL Loft Bed Frame, including overall length, width, and height, and recommended mattress thickness.

# Massive Built-in Storage

Eliminates the Need  
for Extra Furniture



Image 8.2: Illustration detailing the various built-in storage options: a wardrobe, a top shelf, and storage cabinets within the stairs.

## 9. WARRANTY AND SUPPORT

For any questions, concerns, or assistance with your Bellemave Twin XL Loft Bed Frame, please contact our customer support team.

**Email:** [US-VC@bellemavehome.com](mailto:US-VC@bellemavehome.com)

Please include your model number (WL000055TXLN) and a detailed description of your issue when contacting support for faster service.

