

[Manuals.plus](#) /

> [Surakey](#) /

> Surakey 7-inch Android 13 Car Stereo User Manual for Dodge Grand Caravan (2008-2018)

Surakey B0FJXF9LB7

Surakey 7-inch Android 13 Car Stereo User Manual

Model: B0FJXF9LB7

1. INTRODUCTION

This manual provides detailed instructions for the installation, operation, and maintenance of your Surakey 7-inch Android 13 Car Stereo. Please read this manual thoroughly before use to ensure proper functionality and safety.

2. SAFETY INFORMATION

- Ensure the vehicle's engine is off and the parking brake is engaged before installation.
- Professional installation is recommended for optimal performance and to avoid damage.
- Do not operate the device in a manner that distracts you from driving.
- Avoid exposing the unit to extreme temperatures, direct sunlight for prolonged periods, or moisture.
- Use only specified power cables and accessories.

3. PACKAGE CONTENTS

Verify that all items are present in the package:

- Surakey 7-inch Android 13 Car Stereo Unit
- Power Cable
- RCA Input/Output Cables
- 2 USB Cables
- Camera Input Cable
- GPS Antenna
- Instruction Manual
- Canbus Box (if applicable for your vehicle model)
- Radio Adaptor

- AHD Backup Camera (if included in your package)
- External Microphone



Image: Components included with the Surakey car stereo, such as the main unit, power cables, USB cables, GPS antenna, and backup camera.

4. PRODUCT OVERVIEW

The Surakey 7-inch Android 13 Car Stereo is a multimedia head unit designed to integrate advanced features into your vehicle. It features a 7-inch touch screen, Android 13 operating system, 4GB RAM + 64GB ROM, and supports wireless CarPlay and Android Auto. Key functionalities include GPS navigation, Bluetooth, FM/RDS radio, DSP, split-screen display, and steering wheel control compatibility.

Android 13.0 / 4GB+64GB 7 Inch Touch Screen

Plug and Play



Image: Front view of the 7-inch Android 13 car stereo display, showing the main interface with app icons.

5. INSTALLATION

5.1 General Installation

This car stereo is designed for specific vehicle models, including Dodge Grand Caravan (2008-2018). Ensure compatibility with your vehicle's year and model. Professional installation is highly recommended.



Image: Comparison of a car dashboard before and after the installation of the new car stereo.

5.2 Product Wiring Diagram

Refer to the following diagram for proper wiring connections. Incorrect wiring can damage the unit or vehicle electrical system.



Image: Comprehensive wiring diagram illustrating connections for power, speakers, USB, camera, and other functions.

Key Connections:

- **GND:** Ground connection.
- **ACC:** Accessory power (switched with ignition).
- **B+:** Constant 12V power.
- **ILL:** Illumination (for dimming with headlights).
- **KEY1/KEY2:** Steering Wheel Control inputs.
- **ANT:** Antenna connection.
- **RL+/RL-:** Rear Left Speaker.
- **RR+/RR-:** Rear Right Speaker.
- **FL+/FL-:** Front Left Speaker.
- **FR+/FR-:** Front Right Speaker.
- **REVERSE:** Reverse gear signal input for backup camera.

5.3 Reversing Camera Installation

To install the reversing camera:

1. Connect the red wire (1) to the positive pole of the car's reversing light.
2. Connect the black wire (2) to the negative pole of the car's reversing light.
3. The reversing trigger (3) is controlled by the stereo and does not require a separate connection.
4. Ensure the white plug (4) is connected to the main device for proper Bluetooth and WiFi signal reception.

Wireless Carplay & Android Auto



Image: Wiring instructions for the reversing camera, detailing connections to the car's reverse light and the main stereo unit.

6. SETUP AND CONNECTIVITY

6.1 Bluetooth Connection

To connect your mobile phone via Bluetooth:

1. On the car stereo, navigate to the Bluetooth settings.
2. On your mobile phone, enable Bluetooth and search for available devices.
3. Select "CarBT" from the list of devices on your phone.
4. Enter the PIN "0000" (or "1234" if "0000" does not work) on your phone when prompted.
5. Once paired, the car stereo will display "phone audio, music audio" indicating a successful connection. If not, restart the Bluetooth on both devices.

Your browser does not support the video tag.

Video: Demonstrates the process of connecting a mobile phone to the car stereo via Bluetooth for audio and calls.

6.2 ZLINK Connection (Wireless CarPlay/Android Auto)

ZLINK enables wireless CarPlay for iOS devices and wireless Android Auto for Android devices. Follow these steps:

1. Ensure your phone is connected to the car stereo via Bluetooth (as per section 6.1).
2. On the car stereo, open the "ZLINK" application.
3. The system will attempt to connect to your phone. Wait for a few seconds for automatic connection.
4. If the connection is not successful, proceed to manual WiFi connection (section 6.3).

Support Wireless Carplay & Android Auto

Connect your smartphone with this 10 inch car radio by bluetooth, you can make calls, map navigation, play music, and use your phone's app directly on big IPS HD screen



"Hi Siri, Call Kevin"



"Hi Google, Call Emma"



Wireless Carplay



Android Auto



Image: The car stereo display showing the interface for Wireless CarPlay and Android Auto, highlighting voice command capabilities.

Wi-Fi Connectivity

You can connect to the internet using your phone's hotspot or a Wi-Fi device.



GPS Navigation

Built-in global positioning system, all-round map display, simultaneous display of real-time traffic conditions, fast and accurate positioning.



Image: Step-by-step guide for connecting both Wireless CarPlay (iOS) and Wireless Android Auto (Android) to the car stereo using Bluetooth and the Zlink application.

6.3 Manual WiFi Connection (if ZLINK fails)

If ZLINK does not connect automatically, you may need to manually connect to the car stereo's WiFi hotspot:

1. On the car stereo, go to **Settings > Android Settings > Network & Internet > Hotspot & tethering > Wi-Fi hotspot**.
2. Turn on the Wi-Fi hotspot. Note the Network name (e.g., AndroidAP_B442) and Password.
3. On your mobile phone, go to WiFi settings and connect to the car stereo's hotspot using the noted network name and password.
4. Once connected, the car stereo will display the device name under "Connected users", indicating a successful WiFi connection.
5. After manually connecting to the vehicle's WiFi, delete any previous history records of the WiFi connection on the car stereo, then reopen the ZLINK app.

Your browser does not support the video tag.

Video: Illustrates the manual WiFi hotspot connection process on the car stereo and mobile phone, followed by ZLINK activation.

7. OPERATING INSTRUCTIONS

7.1 CarPlay and Android Auto

Once connected via ZLINK, you can access your phone's features directly on the car stereo display. This includes navigation, music, calls, messages, and voice control (Siri or Google Assistant). This provides a safer and more integrated driving experience.

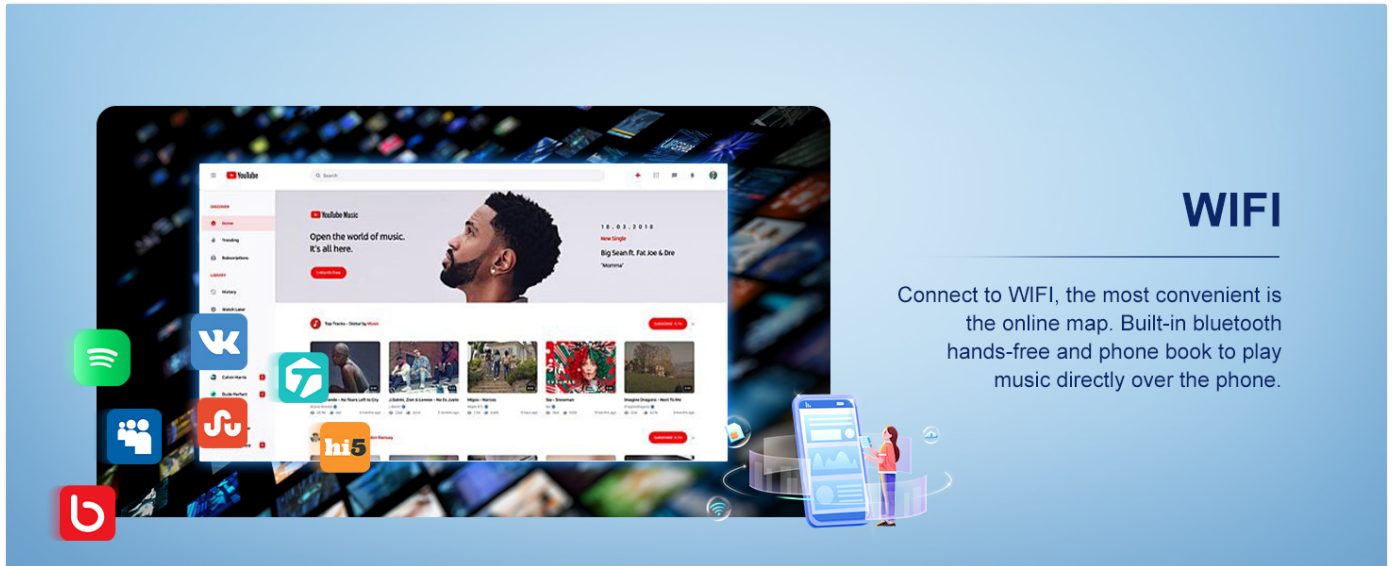


Image: The car stereo displaying both CarPlay and Android Auto interfaces, allowing access to phone applications and voice commands.

7.2 GPS Navigation

The unit supports both offline and online navigation. You can use the included GPS module for offline navigation or download navigation apps from the Play Store (e.g., Google Maps) by connecting to WiFi/WLAN for online navigation.



Image: The car stereo screen displaying GPS navigation with route details and map view.

7.3 FM Radio Function

Enjoy comprehensive FM and RDS channel support. The radio provides access to news, music, and real-time traffic updates, enhancing your driving experience.

Mirror Link

Support mirror link function, support WIFI screen mirroring from IOS and android smartphone.



Image: The car stereo's FM radio interface, displaying current frequency and options for station selection.

7.4 Split-screen Display

The split-screen feature allows you to run two applications simultaneously, such as navigation and music playback, for a smarter and more efficient driving experience.

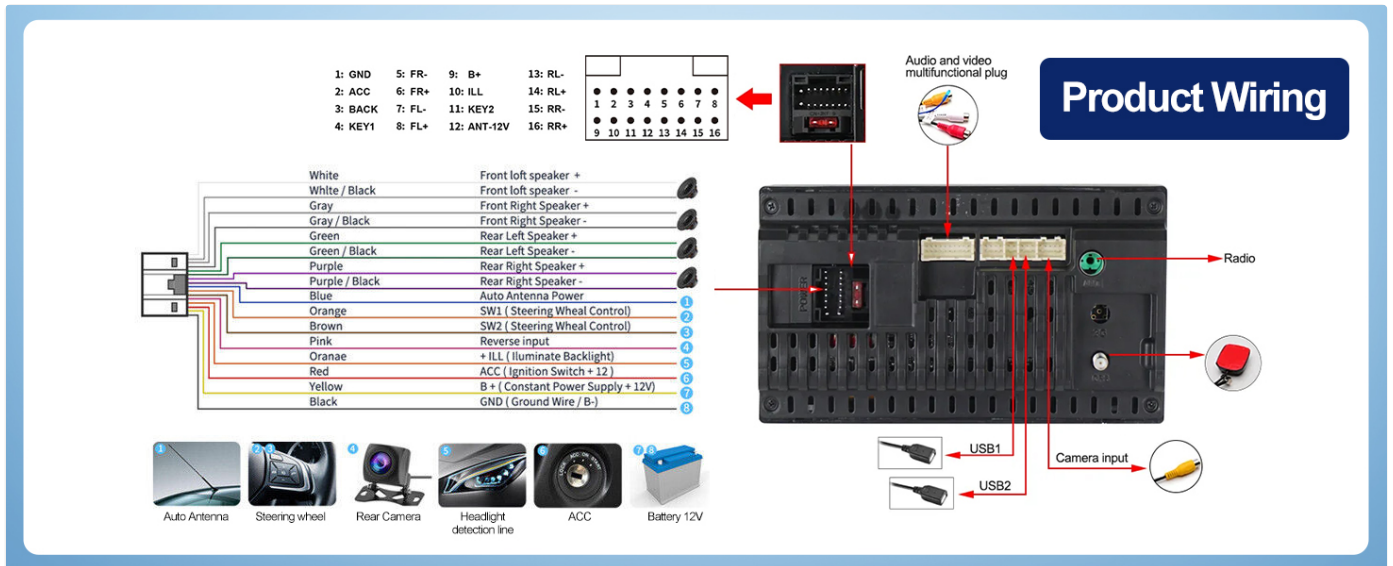


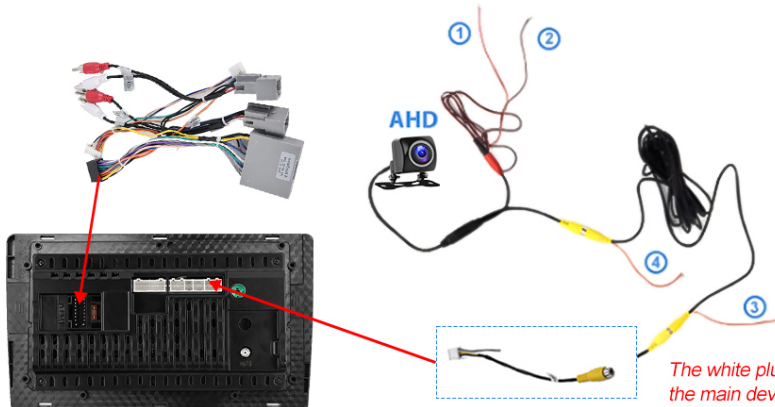
Image: The car stereo in split-screen mode, showing a navigation map on one side and a music player on the other.

7.5 DSP Function

The Digital Sound Processor (DSP) feature provides high-quality audio, personalized audio settings, and automatically optimized soundstage for an enhanced in-car audio system performance.

Reversing Camera Installation

Tip: The reversing input must be plugged in even when the reversing camera is not used



Reversing Camera Wiring

- ① ④ Connect to the positive pole of the power supply of the car's reversing light.
- ② Connect to the negative pole of the power supply of the car's reversing light.
- ③ The reversing trigger is controlled by stereo, so ③ does not require to connect!

The white plug must be connected to the main device, or you can't get bluetooth and wifi signals.

Image: The DSP (Digital Sound Processor) interface on the car stereo, showing equalizer settings for audio customization.

7.6 Mirror Link

Mirror Link allows you to mirror your iOS or Android smartphone screen directly onto the car stereo display via WiFi, providing access to your phone's content on a larger screen.



Image: Visual representation of the Mirror Link feature, where a smartphone's display is duplicated on the car stereo screen.

7.7 Steering Wheel Control (SWC)

The steering wheel control function allows you to conveniently answer calls, change music tracks, and adjust volume directly from your steering wheel buttons, keeping your hands on the wheel and eyes on the road.

DSP Function

The in-car control display's DSP feature combines high-quality audio, personalized audio settings, automatically optimized soundstage, and outstanding in-car audio system performance.

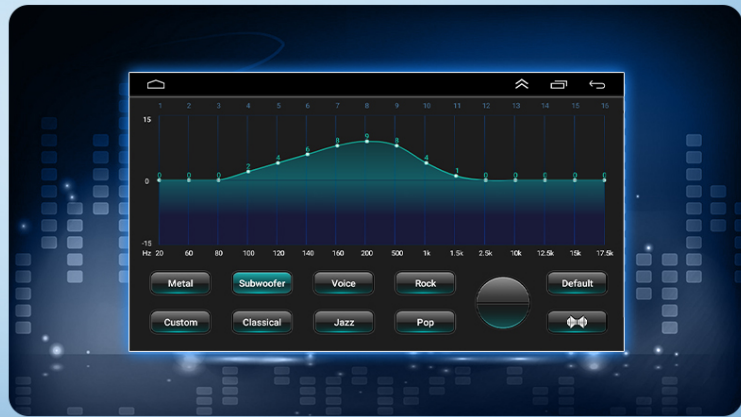


Image: The car stereo's interface for configuring steering wheel controls, allowing users to map functions to their vehicle's buttons.

7.8 Backup Camera

The system supports rear view camera input, making parking and reversing safer and more convenient. The AHD rearview camera will automatically display the image on the screen when the vehicle is in reverse gear.

Split-screen Display

Experience multiple functions at once with the split-screen feature on your car's infotainment display, making your driving experience smarter and more efficient.

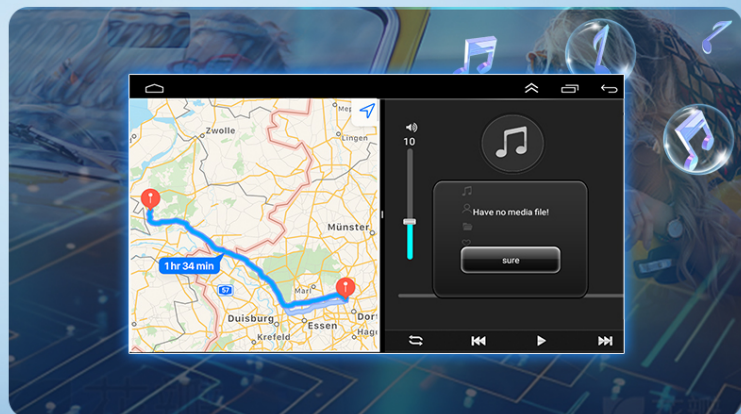
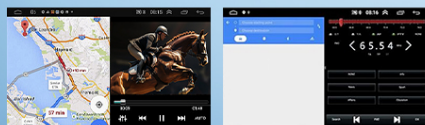


Image: A visual representation of the backup camera display on the car stereo, showing parking assistance lines.

8. MAINTENANCE

- **Cleaning:** Use a soft, dry cloth to clean the screen and unit. Avoid abrasive cleaners or solvents.
- **Software Updates:** Periodically check for software updates to ensure optimal performance and access to new features. Updates can typically be found on the manufacturer's website or through the device's settings.
- **Temperature:** Do not leave the unit in direct sunlight or extreme temperatures for extended periods, as this may affect its lifespan.

9. TROUBLESHOOTING

Problem	Possible Cause	Solution
---------	----------------	----------

Problem	Possible Cause	Solution
Unit does not power on.	Incorrect wiring; blown fuse; vehicle battery issue.	Check power connections (B+, ACC, GND). Inspect vehicle fuses. Ensure sufficient battery voltage.
No sound.	Volume too low; incorrect speaker wiring; mute activated.	Increase volume. Verify speaker connections. Check if mute function is active.
Bluetooth/CarPlay/Android Auto not connecting.	Incorrect pairing; WiFi hotspot off; phone compatibility.	Re-pair Bluetooth. Ensure car stereo WiFi hotspot is on and phone is connected. Check phone compatibility. Restart both devices.
Backup camera not displaying.	Incorrect camera wiring; reverse signal not detected.	Verify camera power and video input connections. Ensure the REVERSE wire is correctly connected to the vehicle's reverse light signal.
Steering Wheel Controls not working.	Incorrect SWC wiring; SWC not configured.	Check KEY1/KEY2 wiring. Access SWC settings in the unit to program buttons.

10. SPECIFICATIONS

- **Model:** B0FJXF9LB7
- **Operating System:** Android 13
- **RAM:** 4GB
- **ROM:** 64GB
- **Screen Size:** 7-inch
- **Connectivity:** WiFi, Bluetooth, GPS
- **Features:** Wireless CarPlay, Wireless Android Auto, Mirror Link, FM/RDS Radio, DSP, Split-screen, Steering Wheel Control (SWC), AHD Backup Camera support.
- **Manufacturer:** Surakey
- **Item Weight:** 1.6 ounces
- **Package Dimensions:** 1.97 x 1.18 x 1.18 inches

11. WARRANTY AND SUPPORT

For warranty information, technical support, or service inquiries, please refer to the contact details provided in your product packaging or visit the official Surakey website. Keep your purchase receipt as proof of purchase for warranty claims.

