

Newmowa NMW-MP01-UK

Newmowa Wireless Bluetooth Remote Control for iPhone

Model: NMW-MP01-UK

1. PRODUCT OVERVIEW

The Newmowa Wireless Bluetooth Remote Control is designed to provide remote functionality for your iPhone's camera, allowing you to capture photos, record videos, adjust zoom levels, and switch between front and rear lenses from a distance. This compact and lightweight device enhances your photography and videography experience, especially for selfies, vlogs, group photos, and various outdoor activities.



Image: The Newmowa remote control allows for photo, video, zoom, and lens switching functions on an iPhone.

Key Features:

- **Remote Shutter Control:** Capture photos and start/stop video recording.
- **Zoom Functionality:** Adjust zoom in and out remotely.
- **Lens Switching:** Easily switch between front and rear cameras.
- **Bluetooth 5.0:** Provides a stable connection up to 15 meters (49 feet).
- **Rechargeable Battery:** Built-in 120 mAh Li-ion battery for extended use.
- **Compact Design:** Lightweight (18g / 0.04lb) and portable for easy carrying.

Compatibility:

This remote control is compatible with iPhone 11 and newer models, running iOS 15.0 or higher versions (including iPhone 11-16). Please verify your phone model and iOS version before use. **Note:** This device is

not compatible with Android phones for all functions, specifically lens switching.

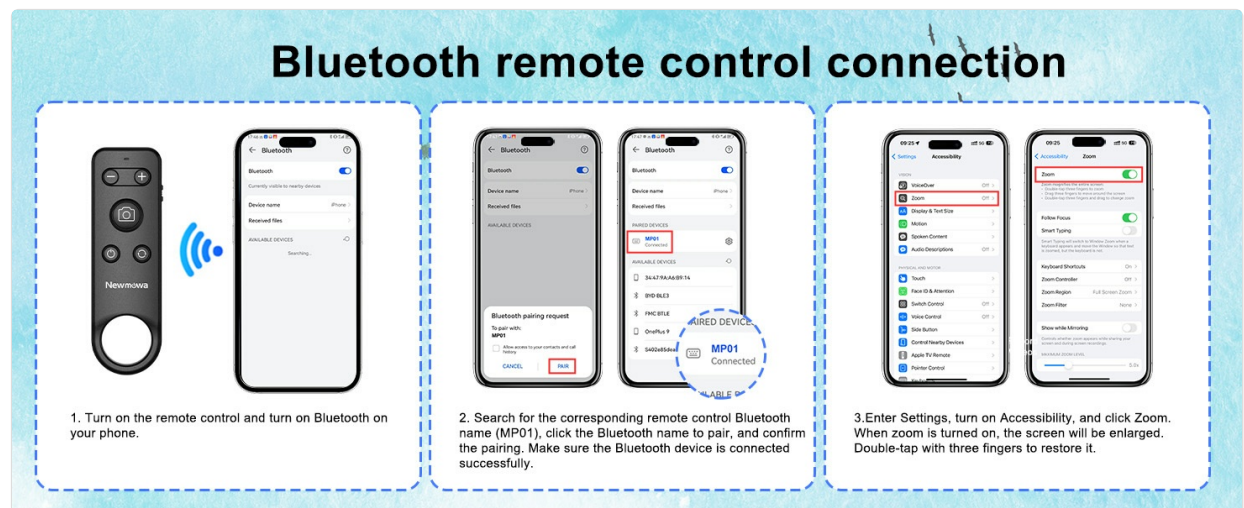


Image: The remote control is shown alongside various iPhone models (iPhone 12, 13, 14, 15, 16, 16 Pro) indicating compatibility with iOS 15 and above.

2. SETUP INSTRUCTIONS

2.1 Charging the Remote Control

Before initial use, fully charge the remote control. The device features a built-in 120 mAh Li-ion rechargeable battery.

1. Connect the provided Type-C USB cable to the charging port on the side of the remote control.
2. Connect the other end of the cable to a compatible USB power source (e.g., USB adapter, power bank, laptop, car charger).
3. The LED indicator light will glow red during charging.
4. Once fully charged (approximately 3 hours), the LED indicator will turn green.



Image: The remote control is shown connected to a USB-C cable for charging, with illustrations of compatible power sources like a USB adapter, power bank, laptop, and car charger.

2.2 Bluetooth Pairing

Follow these steps to pair the remote control with your iPhone:

1. Ensure the remote control is charged.
2. Press and hold the Power ON/OFF button (bottom-left button) on the remote control for a few seconds until the LED indicator light starts blinking, indicating it's in pairing mode.
3. On your iPhone, go to **Settings > Bluetooth** and turn Bluetooth ON.
4. In the list of available devices, locate and select "MP01".
5. Confirm the pairing request if prompted. The LED indicator on the remote will stop blinking and remain

solid, indicating a successful connection.

6. No additional application is required for operation.



Image: A step-by-step visual guide showing how to turn on the remote, enable Bluetooth on the iPhone, find "MP01" in the device list, and confirm the connection.

3. OPERATING INSTRUCTIONS

Once paired, you can use the remote control to operate your iPhone's camera functions.

3.1 Button Functions:

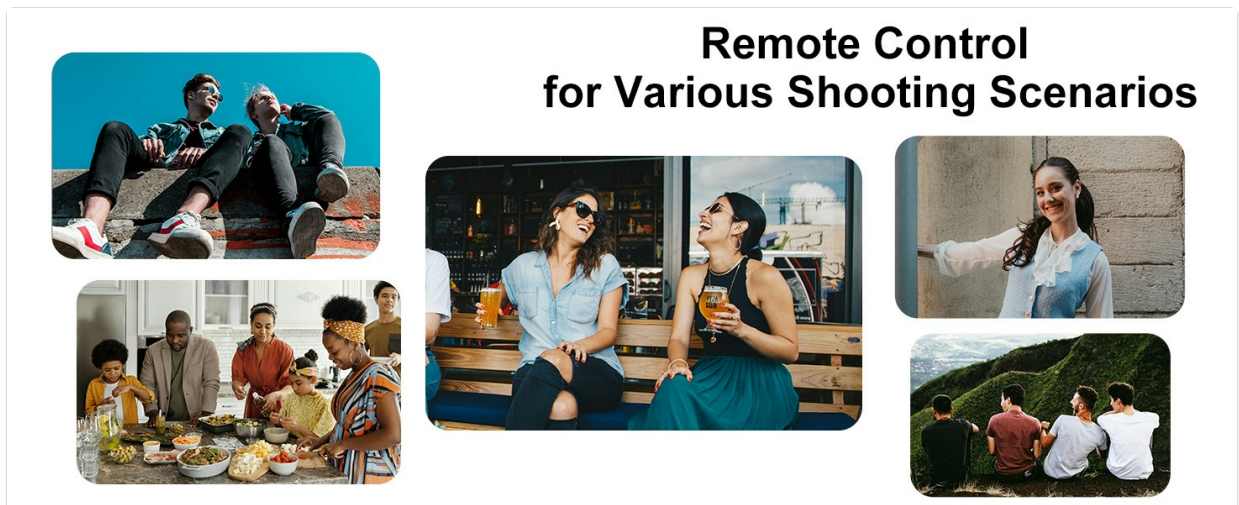


Image: A detailed diagram labeling each button on the Newmowa remote control: Lens Zoom Buttons (+/-), Type-C Charging Interface, LED Indicator Light, Shutter/Record Button, Power ON/OFF Button, and Lens Switch Button.

- **Power ON/OFF Button (Bottom Left):** Press and hold to turn the remote on or off.
- **Shutter/Record Button (Center):** Press once to take a photo or to start/stop video recording.
- **Lens Zoom Button (+) (Top Right):** Press to zoom in.
- **Lens Zoom Button (-) (Top Left):** Press to zoom out.
- **Lens Switch Button (Bottom Right):** Press to switch between the front and rear cameras.

3.2 Taking Photos and Recording Videos:

1. Open the Camera app on your iPhone.
2. Select either Photo or Video mode.

3. Press the **Shutter/Record Button** on the remote control to capture a photo or to start/stop video recording.

3.3 Using the Zoom Function:

1. While in Photo or Video mode, press the **Lens Zoom Button (+)** to zoom in.
2. Press the **Lens Zoom Button (-)** to zoom out.

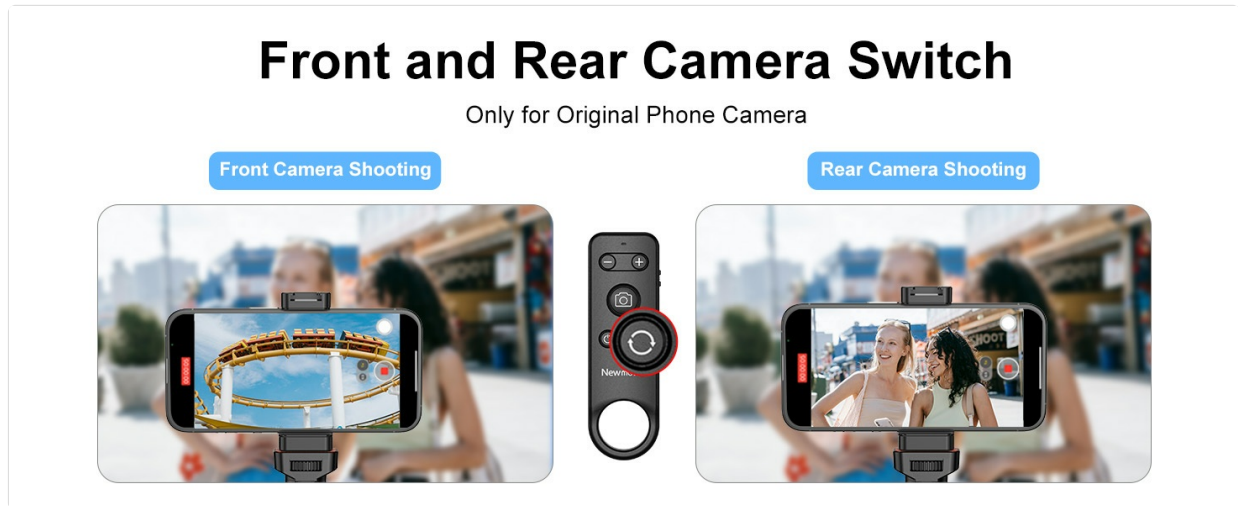


Image: The remote control's zoom buttons are highlighted, demonstrating how to zoom in and out on an iPhone camera, with examples of 0.5X and 5X zoom levels.

3.4 Switching Lenses (Front/Rear Camera):

1. While in the Camera app, press the **Lens Switch Button** on the remote control.
2. This will toggle between your iPhone's front-facing and rear-facing cameras.

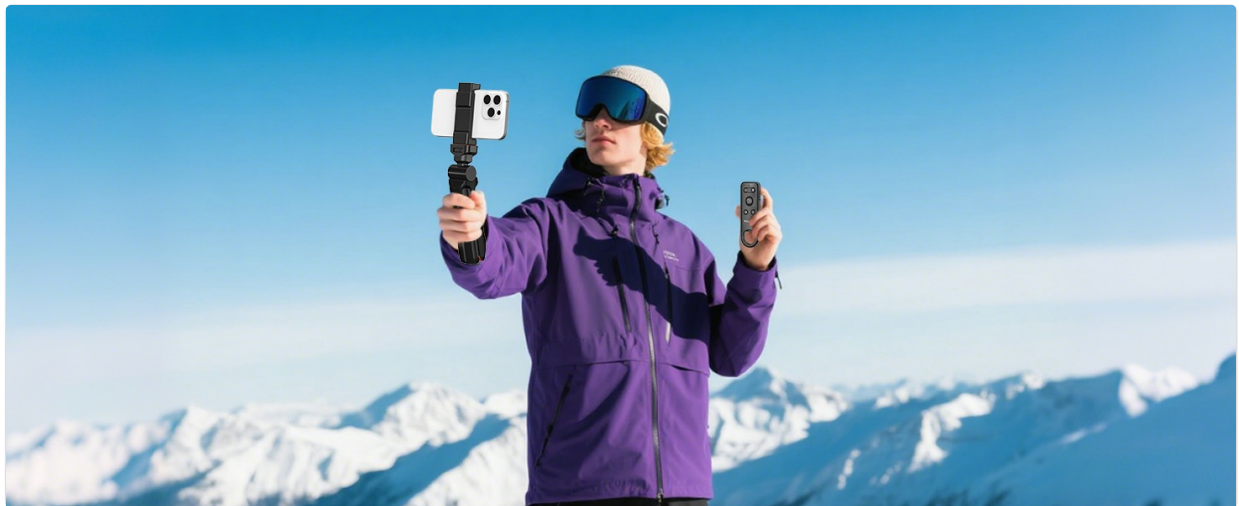


Image: The remote control is shown with the lens switch button highlighted, illustrating the ability to switch between the front camera (for selfies) and the rear camera (for general photography) on an iPhone.

4. MAINTENANCE

4.1 Battery Care:

- The remote control has a continuous use time of approximately 20 hours on a full charge.
- Recharge the device when the LED indicator shows low battery or when it fails to power on.

- Avoid completely draining the battery for prolonged periods to maintain battery health.
- Store the device in a cool, dry place when not in use for extended periods.

4.2 Cleaning:

- Wipe the remote control with a soft, dry cloth to remove dust or smudges.
- Do not use liquid cleaners or abrasive materials, as these may damage the device.

5. TROUBLESHOOTING

- **Remote control does not power on:** Ensure the device is fully charged. Connect it to a power source using the Type-C cable and check if the red LED indicator lights up.
- **Cannot pair with iPhone:**
 - a. Ensure the remote control is in pairing mode (LED blinking).
 - b. Verify Bluetooth is enabled on your iPhone.
 - c. Check if "MP01" appears in the list of available Bluetooth devices. If not, try turning the remote off and on again.
 - d. Ensure the remote is within the 15-meter (49-foot) operating range.
 - e. Forget the device in your iPhone's Bluetooth settings and attempt to re-pair.
- **Shutter/Record button not working:** Ensure the remote is successfully paired and connected to your iPhone. Check if the Camera app is open and active.
- **Zoom function is not smooth or responsive:** While the remote provides zoom control, the smoothness of the zoom may depend on your iPhone's camera software and current settings. For video recording, rapid zooming might appear less fluid.
- **Lens switch not working:** This function is specifically designed for iPhone models running iOS 15.0 or higher. Ensure your device meets these compatibility requirements. This feature may not work on Android devices.

6. SPECIFICATIONS

Brand	Newmowa
Model Number	NMW-MP01-UK
Color	Black
Connectivity Technology	Bluetooth
Bluetooth Version	5.0
Maximum Range	15 meters (49 feet)
Compatible Devices	iPhone (iOS 15 and above, iPhone 11-16)
Battery Type	Lithium-ion (120 mAh)
Rechargeable Battery	Yes
Charging Interface	Type-C USB

Full Charge Time	Approx. 3 hours
Continuous Use Time	Approx. 20 hours
Weight	18g (0.04 lb)

7. WARRANTY AND SUPPORT

7.1 Manufacturer's Warranty:

This Newmowa product comes with a one-year manufacturer's warranty. Please retain your proof of purchase for warranty claims.

7.2 Customer Support:

For any questions, technical assistance, or warranty inquiries, please contact Newmowa customer support through the retailer's platform or the official Newmowa website. Provide your product model number (NMW-MP01-UK) and a detailed description of the issue for efficient support.