

Manuals+

[Q & A](#) | [Deep Search](#) | [Upload](#)

manuals.plus /

- › [BENYAR SMART](#) /
- › [BENYAR SMART FV21-D Smartwatch User Manual](#)

BENYAR SMART FV21-D

BENYAR SMART FV21-D Smartwatch User Manual

Model: FV21-D

1. INTRODUCTION

This manual provides essential information for the proper setup, operation, and maintenance of your BENYAR SMART FV21-D Smartwatch. Please read this guide thoroughly to ensure optimal performance and longevity of your device.



Image: BENYAR SMART FV21-D Smartwatch with a rose mesh strap and a floral watch face.

2. PACKAGE CONTENTS

Upon unboxing your BENYAR SMART FV21-D Smartwatch, please verify that all the following items are included:

- Smartwatch (1 unit)
- Charging Cable (1 unit)
- User Manual (1 unit)
- Watch Bands (2 units - Rose Mesh Strap and Soft Silicone Strap)

Video: Unboxing and package contents demonstration for the smartwatch.

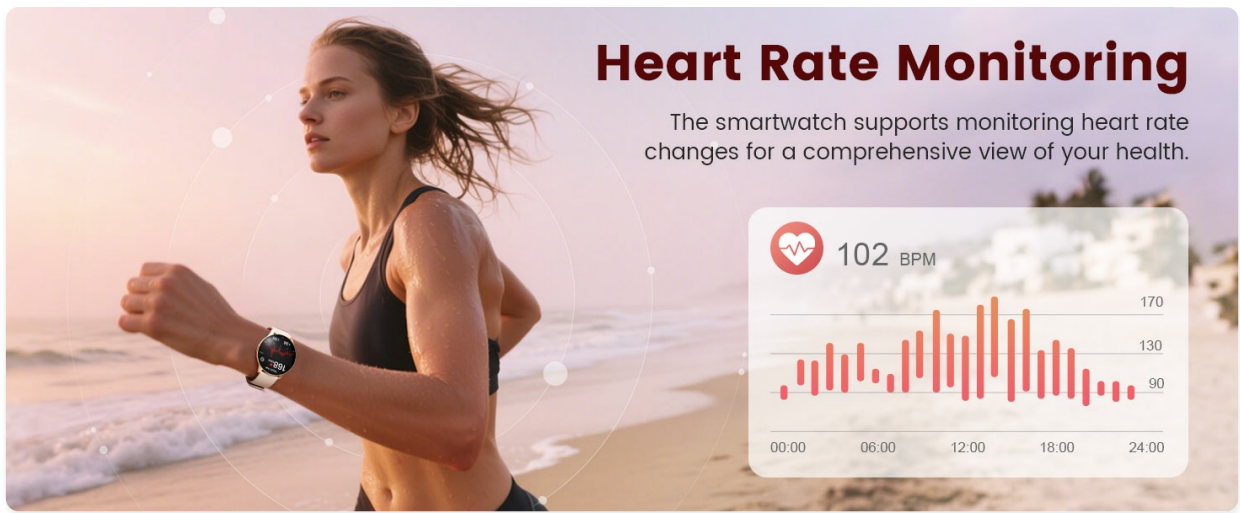


Image: The smartwatch comes with two interchangeable straps for versatile styling.

3. DEVICE OVERVIEW

The BENYAR SMART FV21-D Smartwatch features an ultra-thin design with a 1.43-inch HD AMOLED touchscreen, offering clear visuals and comfortable wear.

1.43" AMOLED Screen

2 straps with different styles



7.9MM

Comfortable skin-
40friendly silicone



Business fashion stainless
steel strap



Image: The smartwatch features a 1.43-inch AMOLED screen and a slim 7.9mm profile, with options for comfortable silicone or business fashion stainless steel mesh straps.

Video: Demonstration of the ultra-thin 1.43-inch AMOLED display and its visual clarity.

4. SETUP

4.1. Charging the Smartwatch

Before initial use, fully charge your smartwatch. Connect the magnetic charging cable to the charging points on the back of the watch and to a USB power source. The watch features a 400mAh battery.

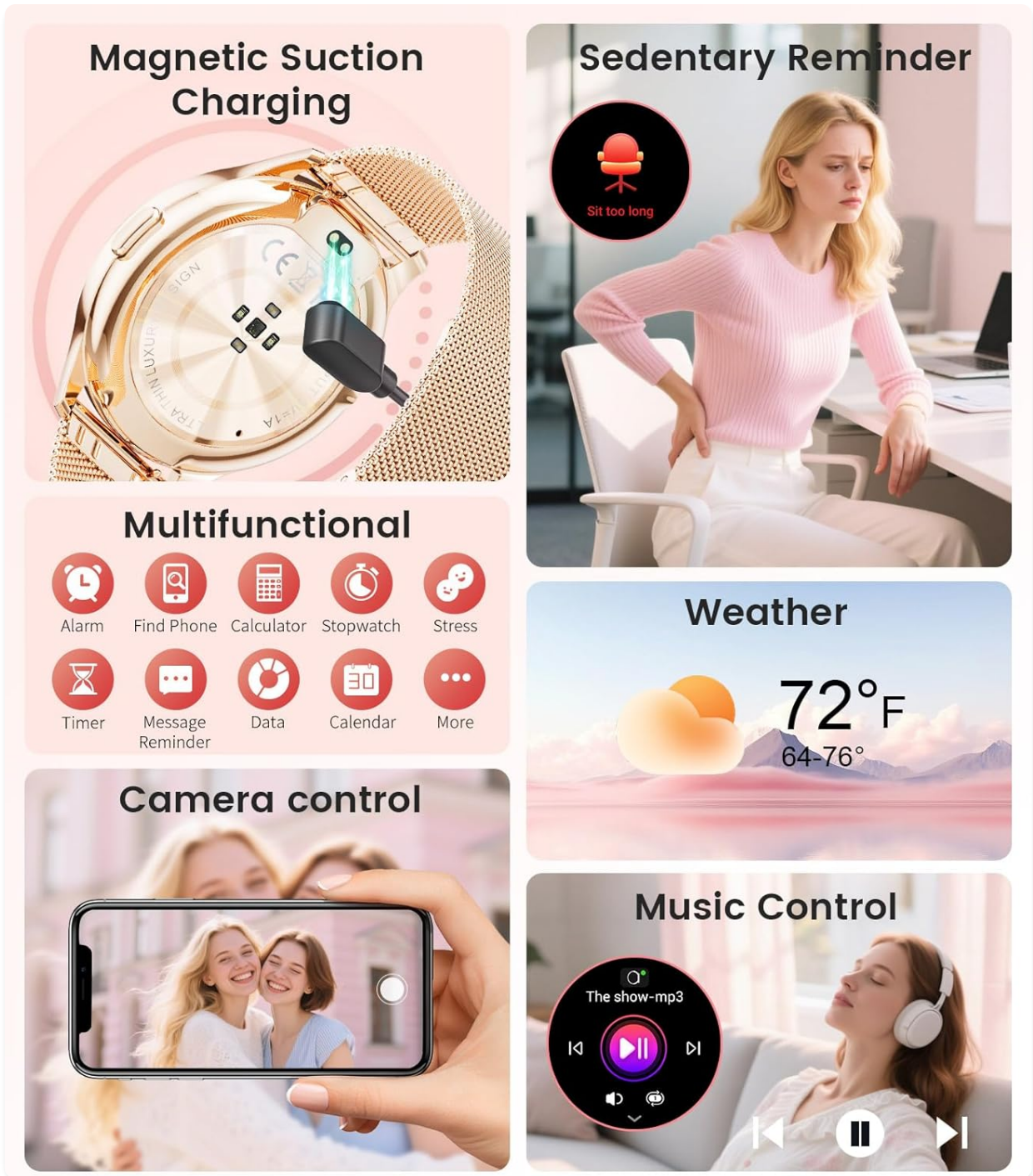


Image: Magnetic charging mechanism for the smartwatch.

4.2. App Installation and Device Pairing

To unlock the full potential of your smartwatch, download and install the 'FitCloudPro' app on your smartphone. The app is compatible with Android 8.0+ and iOS 12.0+ devices.

1. Enable Bluetooth on your smartphone.
2. Download the 'FitCloudPro' app from your phone's App Store (iOS) or Google Play Store (Android).
3. Open the 'FitCloudPro' app and follow the on-screen instructions to create an account or log in as a guest.
4. Allow all requested permissions for the app to function correctly.
5. In the app, navigate to the device section and select 'Search Now' to find your smartwatch (identified as 'I50').
6. Confirm the pairing request on both your phone and the smartwatch.
7. Once paired, enable 'Push Notifications' within the app to receive alerts on your watch.

4.3. Band Replacement

The smartwatch comes with two interchangeable bands. To replace a band:

1. Locate the small spring bar on the underside of the watch band where it connects to the watch body.
2. Gently push the spring bar inwards to release one side of the band.
3. Carefully remove the band from the watch.
4. To attach a new band, align one end of the spring bar with the corresponding hole on the watch lug.
5. Push the spring bar inwards and guide the other end into the opposite lug hole. Release the spring bar to secure the band.
6. Ensure both ends of the band are securely fastened before wearing the watch.

5. OPERATING INSTRUCTIONS

5.1. Basic Navigation

- **Swipe Up/Down:** Scroll through menus and notifications.
- **Swipe Left/Right:** Access quick functions or different watch faces.
- **Press Side Button:** Wake up the screen, return to the home screen, or access the app menu.

5.2. Bluetooth Calling & Smart Notifications

With its built-in microphone and speaker, the smartwatch allows you to make and receive calls directly from your wrist when connected to your phone via Bluetooth. You will also receive vibration alerts for incoming messages and app notifications (e.g., Facebook, WhatsApp, Twitter).

Bluetooth Call



Image: Bluetooth calling, voice assistant, and message reminder features.

Video: Demonstration of Bluetooth calling and app notifications on the smartwatch.

5.3. Health Monitoring

The smartwatch offers comprehensive 24/7 health monitoring features:

- **Heart Rate Monitoring:** Tracks your heart rate continuously. Set alerts via the 'JRing' app.
- **Sleep Analysis:** Provides detailed data on deep sleep, light sleep, and wake phases.
- **Blood Oxygen Monitoring:** Measures your blood oxygen levels.
- **Stress Monitoring:** Helps track your stress levels.
- **Menstrual Cycle Tracking:** Specifically designed for women, it monitors safe phases, ovulation, and provides personalized health alerts.

Sleep Monitoring

Sleep without worries, wake up peacefully and enjoy a restful sleep!

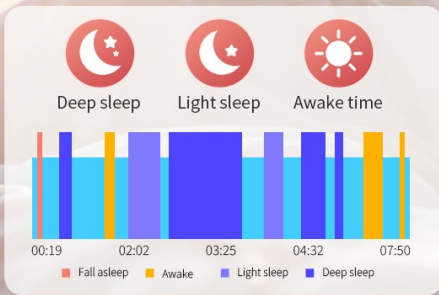


Image: Heart rate monitoring feature on the smartwatch.

A grid of smartwatch app features including: Music Player (showing a watch with music controls), Weather Forecast (showing temperature and weather for New York, London, Beijing, Canberra, Madrid, and Shanghai), Stopwatch (showing a timer at 08:30 AM), Alarm clock (showing two alarms: 04:00 AM and 01:00 PM), Camera Control (showing a camera icon), Health monitoring (showing icons for heart rate, blood pressure, and sleep), and FitCloudPro-App (showing app store logos).

Image: Sleep monitoring feature on the smartwatch.

100+ Sports Mode

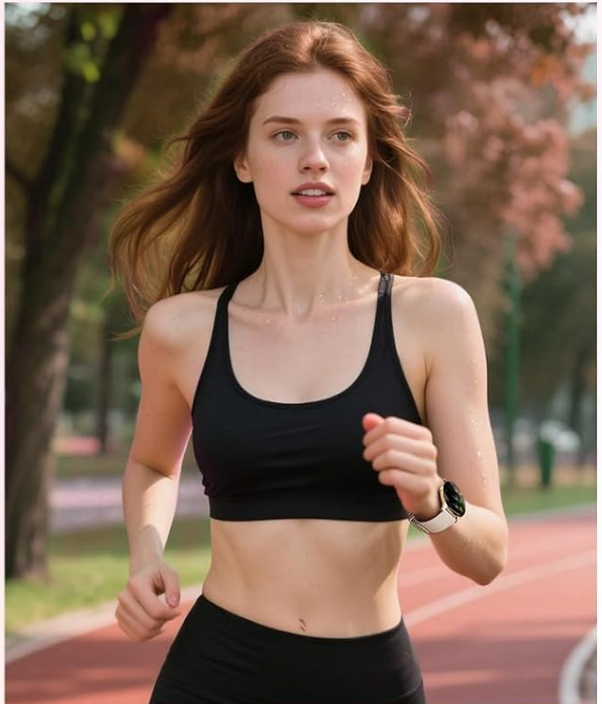
The smart watch provides 100+ sports modes for you to choose your favorite sports to realize your daily plan. Sports types include: daily, outdoor, ball games, fitness, etc.

The interface shows a woman playing tennis with a smartwatch displaying various metrics: 3652 Step, 1.8 km, 45 Min, and 234 Kcal. The watch screen shows a list of sports modes: Walking, Running, and Hiking. Below the watch, there are two circular exercise records: one for 18:03 showing 22608 Steps, 3.08 Km, and 126 Steps/min; and another for 532 Kcal, 3.86 Km, and 3.86 Km.

Image: Menstrual cycle tracking feature for women's wellness.

5.4. Sports Modes

The smartwatch supports over 121 sports modes, including running, cycling, hiking, and swimming. It accurately tracks your steps, calories burned, and distances covered during workouts.



100+

sport mode



Image: The smartwatch supports over 100 sports modes for comprehensive activity tracking.

1.43" HD AMOLED Display

The AMOLED screen supports an all-weather display that allows you to check the time without having to light up the screen, even in bright light.



Digital Clock Displays



Analogue clock display



99.5% Adobe RGB



Image: The smartwatch offers over 100 sports modes to track daily activity plans.

5.5. Other Features

The smartwatch includes a variety of useful functions:

- **Music Control:** Play, pause, skip tracks on your phone.
- **Camera Control:** Remotely trigger your phone's camera.
- **Weather Forecast:** Get real-time weather updates.
- **Alarm Clock:** Set alarms directly from your wrist.
- **Stopwatch & Timer:** Essential tools for workouts and daily tasks.
- **Calculator:** Perform basic calculations.
- **Find Phone:** Locate your misplaced smartphone.
- **Sedentary Reminder:** Prompts you to move after periods of inactivity.
- **Hydration Reminder:** Reminds you to drink water.

5.6. Customizing Watch Faces

Personalize your smartwatch with over 200 watch faces available through the 'FitCloudPro' app. You can also upload your own photos to create custom watch faces.

200+ Stylish Watch Faces

In addition to a large number of online watch faces, it supports custom photos to create your own style, giving you a fresh feeling every day



Image: Over 200 stylish watch faces and custom photo options available.



Image: Customized watch face options, including personal photos and a diverse dial library.

6. MAINTENANCE

6.1. Cleaning

Regularly clean your smartwatch and bands to prevent skin irritation and maintain device hygiene. Use a soft, damp cloth to wipe the screen and watch body. For the bands, follow specific cleaning instructions based on the material (mesh or silicone).

6.2. Water Resistance

The BENYAR SMART FV21-D Smartwatch has an IP68 waterproof rating, making it resistant to water, dust, and sweat. It is suitable for activities like swimming and intense workouts. However, it is not recommended for diving or prolonged submersion in water.

7. TROUBLESHOOTING

If you encounter any issues with your smartwatch, consider the following common solutions:

- **Device Not Turning On:** Ensure the watch is fully charged. Connect it to the charger and wait a few minutes before attempting to power it on.
- **Bluetooth Connection Issues:** Verify that Bluetooth is enabled on your phone and the smartwatch. Ensure the watch is within range of your phone. Try unpairing and re-pairing the device through the 'FitCloudPro' app.
- **Notifications Not Received:** Check that 'Push Notifications' are enabled in the 'FitCloudPro' app for all desired applications. Ensure the app has all necessary permissions on your phone.
- **Inaccurate Health Data:** Ensure the watch is worn snugly on your wrist, not too tight or too loose. Keep the sensor clean and free from debris.
- **Screen Unresponsive:** Restart the smartwatch. If the issue persists, ensure the screen is clean and dry.

For persistent problems, refer to the 'FitCloudPro' app's help section or contact BENYAR SMART customer support.

8. SPECIFICATIONS

Feature	Detail
Model Number	FV21-D
Display	1.43" HD AMOLED Touch Screen
Connectivity	Bluetooth 5.1
Battery Capacity	400mAh Lithium Polymer (included)
Battery Life	4-7 days (typical usage)
Waterproof Rating	IP68
Compatibility	Android 8.0+ / iOS 12.0+

Special Features	Answer/dial calls, Message alerts, Voice assistant, 100+ sports modes, Health monitoring (Heart Rate, Sleep, Blood Oxygen, Stress, Menstrual Cycle), Exercise data tracking, Music control, Alarm clock, Stopwatch, Calculator, Find phone, Weather forecast, Motion detector
Item Weight	190 g



Product Size



Image: Product dimensions and size details.

9. WARRANTY AND SUPPORT

Warranty information for the BENYAR SMART FV21-D Smartwatch is not explicitly provided in the available product data. For detailed warranty terms and conditions, please refer to the product packaging or contact BENYAR SMART customer support directly. For support, please visit the manufacturer's official website or contact their customer service department.

