

Ubiquiti U7-PRO-XG

Ubiquiti UniFi U7 Pro XG U7-PRO-XG Instruction Manual

1. INTRODUCTION

This manual provides comprehensive instructions for the Ubiquiti UniFi U7 Pro XG, a professional network device designed for seamless integration within the UniFi ecosystem. It covers essential information regarding setup, operation, maintenance, and troubleshooting to ensure optimal performance and effective network management. The device offers reliable Ethernet connectivity and advanced monitoring capabilities within a compact design, making it suitable for professional network deployments.

2. PACKAGE CONTENTS

Verify that all items are present in your package:

- Ubiquiti UniFi U7 Pro XG Device
- Replacement Battery Module
- Quick Start Guide (not included in this manual)

3. SETUP

Follow these steps to set up your UniFi U7 Pro XG device:

1. **Unpack the Device:** Carefully remove the UniFi U7 Pro XG and its components from the packaging.
2. **Physical Placement:** Select a suitable location for the device. Its compact design (6.0 x 4.0 x 2.0 inches, 4 ounces) allows for flexible placement. Ensure adequate ventilation and avoid placing it near sources of interference.
3. **Connect Power:** Connect the appropriate power source to the device. Refer to the Quick Start Guide for specific power requirements.
4. **Establish Ethernet Connectivity:** Connect an Ethernet cable from your network infrastructure to the Ethernet port on the UniFi U7 Pro XG. This provides reliable high-performance data transmission.
5. **UniFi Ecosystem Integration:** The device is designed for seamless integration with the UniFi ecosystem. Ensure your UniFi Controller software is running and accessible on your network.

6. **Device Adoption:** Open your UniFi Controller. The U7 Pro XG should appear as a discoverable device. Follow the on-screen prompts within the UniFi Controller to adopt and configure the device into your network.
7. **Initial Configuration:** Once adopted, configure network settings, Wi-Fi SSIDs, security protocols, and other relevant parameters through the UniFi Controller interface.



This image displays the Ubiquiti UniFi U7 Pro XG, a circular white network access point. It features a distinctive blue ring and the Ubiquiti logo centrally located on its surface, indicating its brand and function as a UniFi device.

4. OPERATING INSTRUCTIONS

The UniFi U7 Pro XG operates under the UniFi Operating System (Unifi OS) and is managed through the UniFi Controller interface.

- **Accessing the UniFi Controller:** Log in to your UniFi Controller via a web browser. This central interface provides complete network management functionality.
- **Real-time Performance Tracking:** The UniFi control panel offers real-time performance metrics, allowing you to monitor network activity, client connections, and device status.
- **Network Surveillance and Data Management:** Utilize the enterprise-grade network surveillance features for advanced data management and system oversight. This includes traffic analysis, event logging, and security monitoring.
- **Configuration Management:** All configuration changes, such as Wi-Fi settings, VLANs, and user access, are performed through the UniFi Controller and pushed to the U7 Pro XG device.
- **Firmware Updates:** The UniFi Controller will notify you of available firmware updates for the U7 Pro XG. It is recommended to keep the device's firmware up to date for optimal performance and security.

5. MAINTENANCE

Regular maintenance ensures the longevity and optimal performance of your UniFi U7 Pro XG.

- **Firmware Updates:** Periodically check for and apply firmware updates through the UniFi Controller. These updates often include performance improvements, new features, and security patches.
- **Physical Inspection:** Regularly inspect the device for any signs of physical damage or obstruction to ventilation. Ensure all cable connections are secure.
- **Cleaning:** Gently clean the exterior of the device with a soft, dry cloth. Avoid using liquid cleaners or abrasive materials.
- **Environmental Conditions:** Ensure the device operates within its specified environmental conditions (temperature, humidity) to prevent overheating or damage.
- **Backup Configuration:** Regularly back up your UniFi Controller configuration to easily restore settings if

needed.

6. TROUBLESHOOTING

If you encounter issues with your UniFi U7 Pro XG, consider the following troubleshooting steps:

- **Device Not Powering On:**
 - Verify the power cable is securely connected to both the device and the power outlet.
 - Ensure the power outlet is functional.
- **No Network Connectivity:**
 - Check the Ethernet cable connection at both ends (device and network switch/router).
 - Confirm that your network infrastructure (router, switch) is operational.
 - Verify the device's status in the UniFi Controller.
- **Device Not Adopted in UniFi Controller:**
 - Ensure the UniFi Controller is running and accessible on the same network segment as the U7 Pro XG.
 - Check for any firewall rules that might be blocking communication between the device and the controller.
 - Try restarting the device and the UniFi Controller.
- **Poor Wi-Fi Performance:**
 - Check for potential sources of interference (e.g., other wireless devices, microwaves).
 - Review channel selection and power settings in the UniFi Controller.
 - Ensure the device is optimally placed for coverage.
- **Factory Reset:** As a last resort, if issues persist, you may perform a factory reset. Refer to the device's specific documentation or the UniFi support resources for instructions on how to perform a factory reset.
Note: A factory reset will erase all configurations and return the device to its default state.


7. SPECIFICATIONS

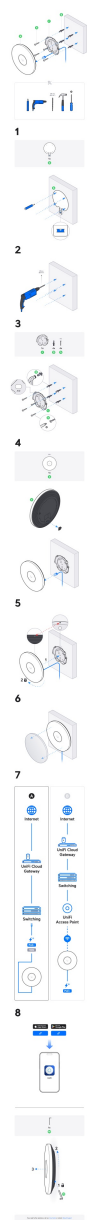
Feature	Detail
Model	U7 Pro XG
Manufacturer	Ubiquiti
Package Dimensions	6 x 4 x 2 inches
Item Weight	4 ounces
ASIN	B0FJPTCJLJ
Included Components	Replacement Battery Module
Operating System	Unifi OS
Connectivity Protocol	Ethernet, Wi-Fi

8. WARRANTY AND SUPPORT

The Ubiquiti UniFi U7 Pro XG is backed by a one-year manufacturer warranty. For warranty claims, technical support, or additional product information, please refer to the official Ubiquiti support channels and website. Keep your proof of purchase for warranty validation.

Related Documents - U7-PRO-XG

	<p>Ubiquiti UniFi U7 Pro XG Installation Guide</p> <p>Official installation guide for the Ubiquiti UniFi U7 Pro XG wireless access point. Learn how to install and set up your device with step-by-step instructions and component details.</p>
---	---



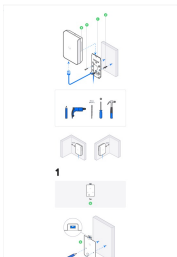
[Ubiquiti UniFi U7 Pro XG Installation Guide](#)

Step-by-step installation guide for the Ubiquiti UniFi U7 Pro XG access point, detailing component assembly and network setup.



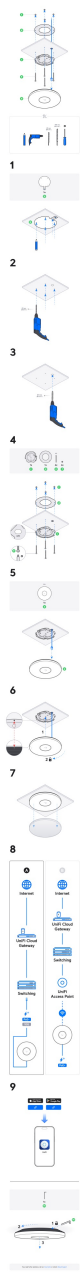
[Ubiquiti UniFi U7 Pro XG Access Point Wall Installation Guide](#)

Step-by-step instructions for installing the Ubiquiti UniFi U7 Pro XG Wi-Fi 6E Access Point on a wall, including component identification and connection guidance.



[Ubiquiti UniFi U7 Pro Wall Installation Guide - Setup & Mounting](#)

This guide provides essential instructions for the wall installation of the Ubiquiti UniFi U7 Pro Wall access point. It details the mounting process, necessary tools, and basic network connectivity.



[Ubiquiti UniFi U7 Pro XG Access Point Ceiling Installation Guide](#)

Step-by-step instructions for installing the Ubiquiti UniFi U7 Pro XG Access Point on a ceiling, including mounting hardware and network connection diagrams.



[UniFi Pro XG 8 PoE Installation Guide](#)

Installation guide for the UniFi Pro XG 8 PoE switch, detailing setup and configuration for network deployment.