

GROWNSY 5800E

GROWNSY Baby Food Maker Model 5800E Instruction Manual

Your guide to preparing healthy and nutritious meals for your baby.

1. IMPORTANT SAFEGUARDS

Please read all instructions carefully before using the GROWNSY Baby Food Maker. Keep this manual for future reference.

- Always use distilled or purified water in the water tank to prevent mineral buildup.
- To power off the machine, press and hold the power switch.
- Ensure the blender cup and lid are properly installed before operation. The display will show 'E1' if the cup is not installed correctly.
- If the display shows 'E2', it indicates a lack of water in the tank. Refill the water tank before continuing.
- Always unplug the machine before inserting or removing any parts. Do not open the lid until the blades have completely stopped.
- The GROWNSY Baby Food Maker is constructed from high-grade, heat-resistant Tritan material, which is BPA, lead, phthalate, odor, and latex-free, ensuring safe food preparation.

2. PRODUCT OVERVIEW

The GROWNSY Baby Food Maker Model 5800E is an all-in-one appliance designed to simplify the preparation of homemade baby food. It combines steaming, blending, and sterilizing functions in a single compact unit, preserving essential nutrients and flavors for your baby's healthy development.



Figure 1: GROWNSY Baby Food Maker Model 5800E with prepared baby food.

3. COMPONENTS

The GROWNSY Baby Food Maker consists of the following main components:

- **Main Unit:** Houses the motor, water tank, and control panel.
- **Blender Cup:** Transparent container for steaming and blending.
- **Steaming Basket:** Elevated basket for efficient steam cooking, designed to preserve nutrients.
- **Lid:** Secure lid with a 360° anti-splash design.
- **Blades:** Stainless steel blending blades for various textures.
- **Control Panel:** Digital display with buttons for Steam, Sterilize, Manual Blend, and Auto Blend.
- **Power Cord:** For connecting the appliance to an electrical outlet.
- **Spatula:** Included for easy food handling.

PediatricEND Natural Steaming Design

Preserves nutrients and flavor



Figure 2: Assembly of the steaming basket within the blender cup.

4. SETUP

1. **Unpack:** Carefully remove all components from the packaging.
2. **Initial Cleaning:** Before first use, wash all removable parts (blender cup, lid, steaming basket, blades) with warm soapy water. Rinse thoroughly and dry. Wipe the main unit with a damp cloth.
3. **Assemble:** Place the blending blades securely in the blender cup. Insert the steaming basket into the blender cup.
4. **Position:** Place the assembled blender cup onto the main unit, ensuring it clicks into place.

5. **Add Water:** Open the water tank cover on the main unit and fill with distilled or purified water up to the MAX line. Close the cover securely.
6. **Connect Power:** Plug the power cord into a suitable electrical outlet.

5. OPERATING INSTRUCTIONS

5.1 Steaming Food

1. **Prepare Ingredients:** Wash, peel, and chop fruits, vegetables, or meat into small, uniform pieces (approximately 1-2 cm).
2. **Load Steaming Basket:** Place the chopped ingredients into the steaming basket within the blender cup. Do not overfill.
3. **Secure Lid:** Place the lid on the blender cup and twist to lock it securely.
4. **Select Steam Time:** Press the 'Steam' button on the control panel. Use the '+' and '-' buttons to adjust the steaming time according to the food type. Refer to the table below for general guidelines.
5. **Start Steaming:** Press the power button to begin the steaming cycle. The appliance will beep when steaming is complete.

Locks in Freshness with Elevated Steam Basket

Avoid boiling to preserve water-soluble vitamins B & C

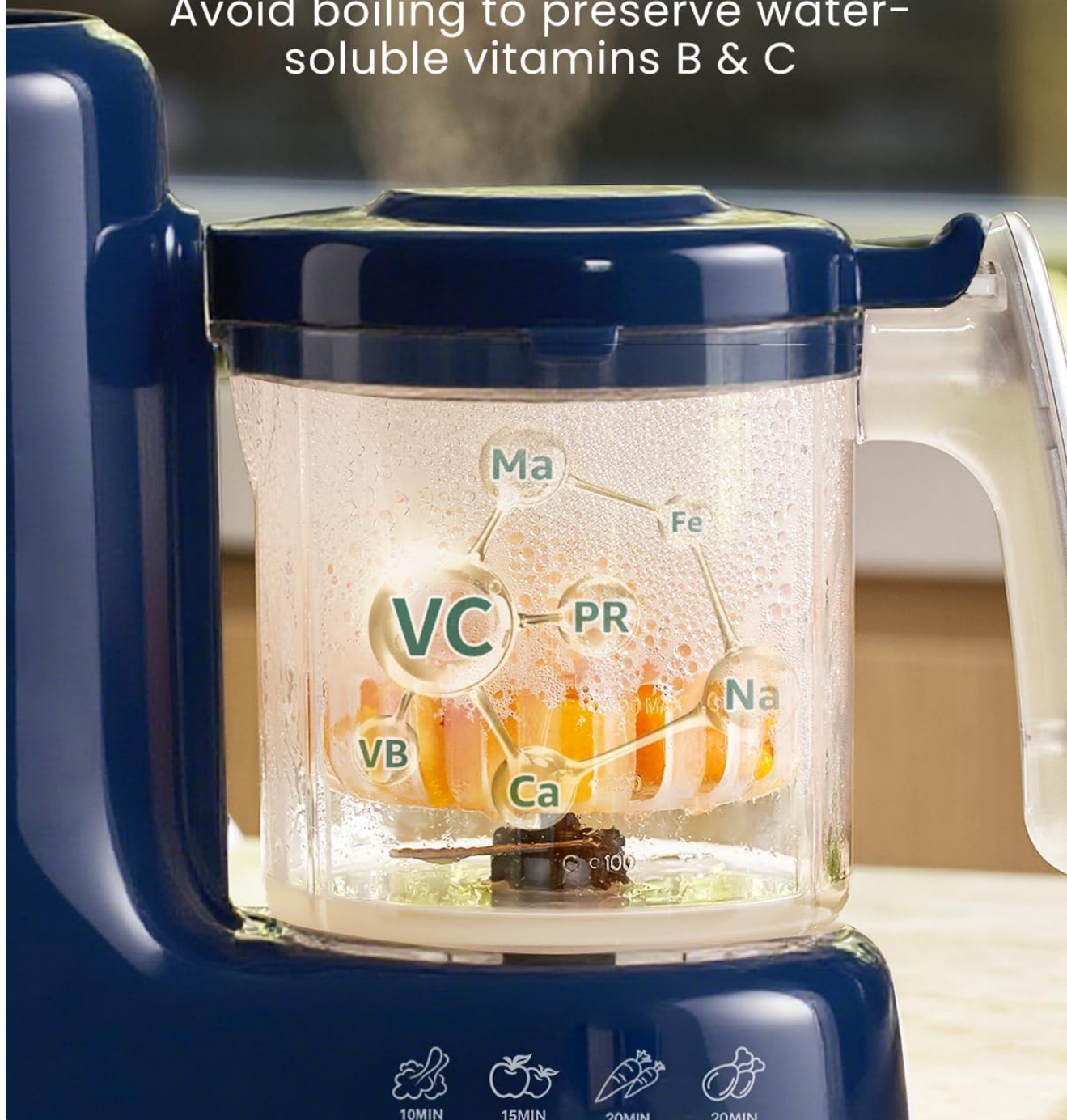


Figure 3: Ingredients placed in the elevated steaming basket.

5.2 Blending Food

After steaming, you can blend the food to your desired consistency.

1. **Remove Steaming Basket:** Carefully remove the lid and then the steaming basket from the blender cup. Discard any excess water from the steaming process if desired.
2. **Transfer Food:** Pour the steamed ingredients directly into the blender cup, ensuring they are on top of the blades.
3. **Add Liquid (Optional):** For smoother purees, add breast milk, formula, or purified water.
4. **Secure Lid:** Place the lid back on the blender cup and twist to lock it.

5. **Select Blending Mode:**

- **Auto Blend:** Press the 'Auto' button for automatic blending to a smooth consistency.
- **Manual Blend:** Press and hold the 'Manual' button for pulsed blending, allowing you to control the texture (fine, medium, coarse). Release the button to stop.

6. **Serve:** Once blended to your preference, carefully remove the lid and serve the homemade baby food.



360° Anti-Splash Lid

NO splatters, easy to clean



GROWNSY Upgraded Anti-Splash Lid

- ✓ Prevents messes, keeping the motor clean
- ✓ Splash-proof and easy to clean



Old Models without an Anti-Splash Lid

- ✗ Splashing into the motor, collecting dirt
- ✗ Messy and hard to clean

Figure 4: Manual blending for precise texture control.

5.3 Sterilizing

The sterilizing function helps maintain hygiene for your baby's feeding equipment.

1. **Prepare for Sterilization:** Ensure the blender cup and steaming basket are empty and clean of food residue. Place them back onto the main unit.
2. **Add Water:** Fill the water tank with distilled or purified water up to the MAX line.
3. **Start Sterilization:** Press the 'Sterilize' button on the control panel. The appliance will automatically run a sterilization cycle.



Figure 5: High-temperature steam sterilization in progress.

6. CLEANING AND MAINTENANCE

Regular cleaning ensures optimal performance and hygiene.

- 1. **Unplug:** Always unplug the appliance from the power outlet before cleaning.
- 2. **Disassemble:** Carefully remove the blender cup, lid, steaming basket, and blades.
- 3. **Hand Wash:** Wash all removable parts with warm, soapy water. Use a soft brush for hard-to-reach areas. Rinse thoroughly and allow to air dry completely.
- 4. **Clean Main Unit:** Wipe the main unit with a damp cloth. Do not immerse the main unit in water.
- 5. **Descaling:** Over time, mineral deposits may build up in the water tank. To descale, mix a solution of water and citric acid detergent (if provided, or a food-grade descaling solution) and run a steam cycle. Rinse the water tank thoroughly afterward.

7. TROUBLESHOOTING

If you encounter any issues, refer to the following table:

Problem	Possible Cause	Solution
Display shows 'E1'	Blender cup not properly installed.	Ensure the blender cup is correctly seated and locked onto the main unit.
Display shows 'E2'	Water tank is low or empty.	Refill the water tank with distilled or purified water.
Appliance does not turn on.	Not plugged in; power switch not pressed.	Check power connection; press and hold the power switch.
Food not blending smoothly.	Insufficient liquid; ingredients too large.	Add more liquid (breast milk/water); chop ingredients into smaller pieces.

Steam and Blend in One

Quick, Healthy, and Convenient



Figure 6: Safety lock design and water shortage reminder on the control panel.

8. SPECIFICATIONS

Feature	Detail
Brand	GROWNSY
Model Name	5800E


Feature	Detail
Product Dimensions	7.4"D x 10.7"W x 6.4"H
Item Weight	4.38 pounds
Color	Dark Blue
Power Source	Corded Electric
Special Feature	Adjustable Speed Control
Product Care Instructions	Hand Wash
Included Components	1 x Baby Food Maker
Manufacture Year	2025

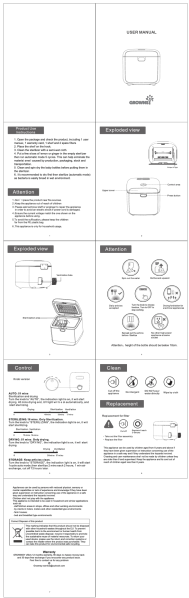
9. WARRANTY AND SUPPORT

GROWNSY is committed to providing high-quality products and excellent customer service.

- **Warranty:** This product comes with a 1-year warranty from the date of purchase.
- **Customer Service:** Our dedicated customer service team is available 24/7 to assist you with any questions or concerns.
- **Technical Support:** We offer lifetime technical support for your GROWNSY Baby Food Maker.
- **Contact Us:** For any inquiries or support needs, please refer to the contact information provided in your product packaging or visit the official GROWNSY website.

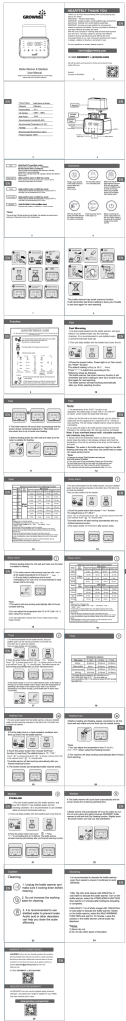
Related Documents - 5800E

	<p>GROWNSY BL603 Baby Food Maker User Manual</p> <p>Comprehensive user manual for the GROWNSY BL603 Baby Food Maker, providing instructions on operation, safety, cleaning, and maintenance for preparing baby food.</p>
---	--



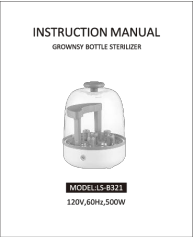
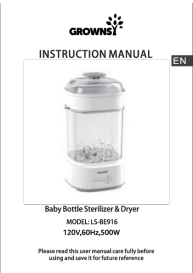

[GROWNSY UV Sterilizer Box User Manual - Instructions and Specifications](#)

Comprehensive user manual for the GROWNSY UV Sterilizer Box (Models S5, S5D), detailing product use, instructions, control functions, cleaning, maintenance, safety precautions, and warranty information.



[GROWNSY Baby Bottle Warmer User Manual and Quick Reference Guide](#)

Comprehensive guide for the GROWNSY Baby Bottle Warmer (Model W3-1), detailing functions like fast warming, keep warm, defrost, food heating, and sterilizing. Includes usage instructions, reference charts for various bottle types and volumes, and warranty information.

	<p>Grownsy Bottle Sterilizer Instruction Manual</p> <p>Comprehensive instruction manual for the Grownsy Bottle Sterilizer (Model LS-B321), covering setup, usage, cleaning, descaling, and customer support.</p>
	<p>GROWNSY Baby Bottle Sterilizer & Dryer Instruction Manual (LS-BE916)</p> <p>Comprehensive instruction manual for the GROWNSY Baby Bottle Sterilizer & Dryer, Model LS-BE916. Learn about features, operation, cleaning, maintenance, and troubleshooting.</p>
	<p>GROWNSY N9T Bottle Warmer User Manual - Instructions and Guide</p> <p>Comprehensive user manual for the GROWNSY N9T Bottle Warmer. Learn how to use, clean, and maintain your bottle warmer for optimal milk and food warming, sterilization, and keep-warm functions.</p>