

## BSNAW N502

# BSNAW Cordless Vacuum Cleaner N502 (XL-613H) Instruction Manual

Model: XL-613H

## 1. INTRODUCTION

This manual provides essential information for the safe and efficient operation, maintenance, and care of your BSNAW Cordless Vacuum Cleaner, Model N502 (XL-613H). Please read all instructions carefully before first use and retain this manual for future reference.

## 2. SAFETY INFORMATION

Always follow basic safety precautions when using electrical appliances to reduce the risk of fire, electric shock, or injury.

- Do not use outdoors or on wet surfaces.
- Do not allow to be used as a toy. Close attention is necessary when used by or near children.
- Use only as described in this manual. Use only manufacturer's recommended attachments.
- Do not use with damaged cord or plug. If appliance is not working as it should, has been dropped, damaged, left outdoors, or dropped into water, return it to a service center.
- Do not pull or carry by cord, use cord as a handle, close a door on cord, or pull cord around sharp edges or corners. Do not run appliance over cord. Keep cord away from heated surfaces.
- Do not unplug by pulling on cord. To unplug, grasp the plug, not the cord.
- Do not handle plug or appliance with wet hands.
- Do not put any object into openings. Do not use with any opening blocked; keep free of dust, lint, hair, and anything that may reduce airflow.

- Keep hair, loose clothing, fingers, and all parts of body away from openings and moving parts.
- Do not pick up anything that is burning or smoking, such as cigarettes, matches, or hot ashes.
- Do not use to pick up flammable or combustible liquids, such as gasoline, or use in areas where they may be present.
- Do not use without dust bag and/or filters in place.
- Turn off all controls before unplugging.
- Use extra care when cleaning on stairs.
- Do not use to pick up toxic material (e.g., chlorine bleach, ammonia, drain cleaner).

### 3. PACKAGE CONTENTS

The BSNAW Cordless Vacuum Cleaner N502 (XL-613H) package includes the following components:

- Main Motor (Handheld Vacuum)
- Motorized Brush Head
- Retractable Metal Tube (Extension Tube)
- 2-in-1 Dusting Brush
- Crevice Nozzle
- Hair Cleaning Tool
- Adapter (Charger)
- HEPA Filter (pre-installed or spare)
- Wall Mount Plate
- Screws for Wall Mount
- Instruction Manual

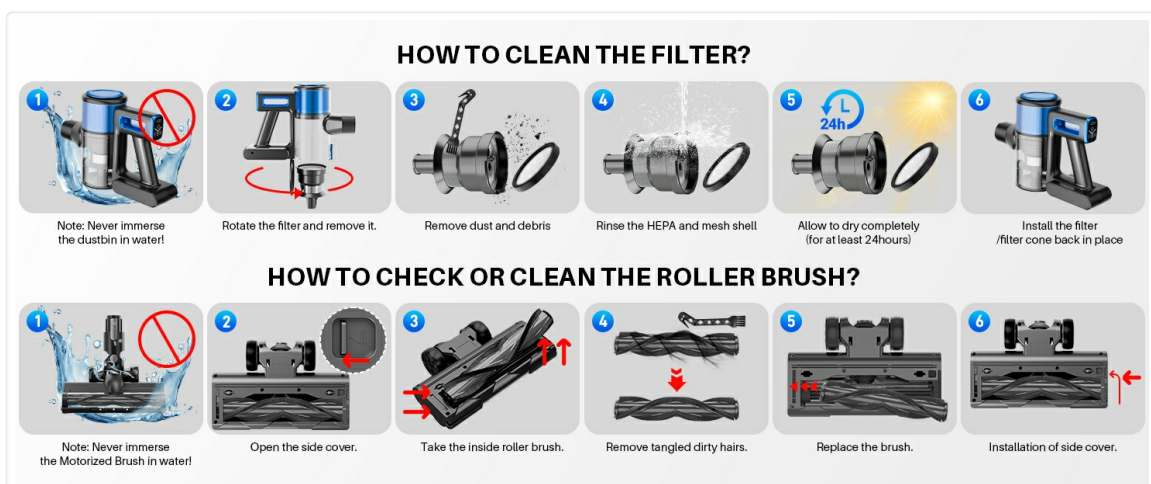


Figure 3.1: Included Components

### 4. PRODUCT OVERVIEW

The BSNAW Cordless Vacuum Cleaner N502 (XL-613H) is a versatile 8-in-1 lightweight stick vacuum designed for various cleaning tasks. It features a powerful motor, a long-lasting battery, and an advanced filtration system.

### Key Features:

- **Powerful Suction:** Up to 30000Pa for effective deep cleaning on various surfaces.
- **Long Runtime:** Up to 45 minutes on minimum suction mode with a 2200mAh battery.
- **8-in-1 Versatility:** Easily converts between stick and handheld modes with multiple attachments for cleaning floors, carpets, stairs, upholstery, and vehicles.
- **Advanced Filtration:** Fully sealed 5-stage cyclone filtration system with HEPA filter, stainless steel filter, and sponge filters, capturing up to 99.99% of fine dust particles.
- **Anti-Tangle V-Roller Brush:** Designed to prevent hair tangling, suitable for hard floors and high-density carpets under 10mm.
- **Maneuverability:** Flexible swivel head (180° sideways, 90° up and down) and bright LED lights for cleaning dark areas.
- **Easy Dust Disposal:** One-touch dust cup emptying for hygienic waste disposal.
- **Low Noise:** Operates at less than 65dB.



Figure 4.1: Powerful Suction for Deep Cleaning

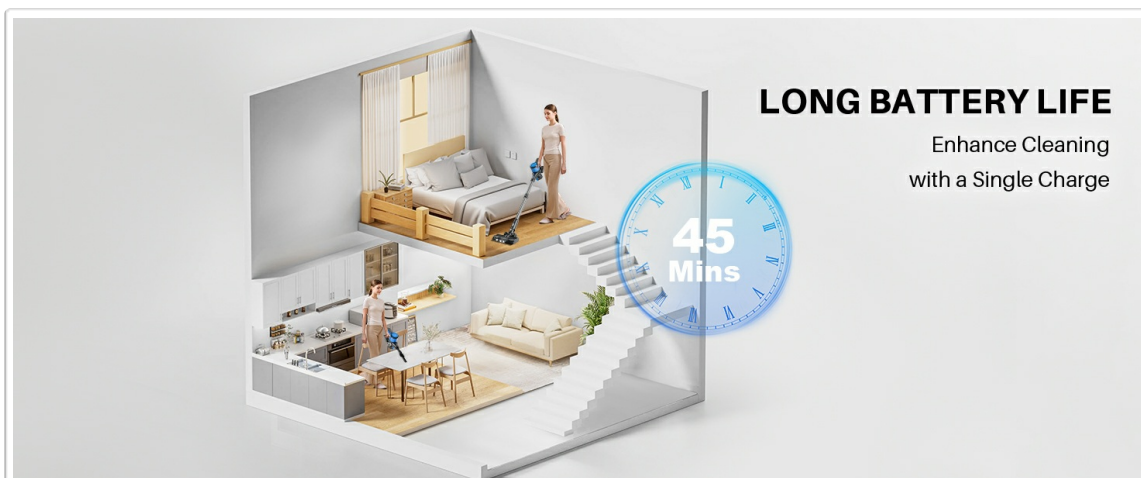


Figure 4.2: 5-Stage Filtration System



Figure 4.3: Anti-Tangle V-Roller Brush

## 5. SETUP

### 5.1 Assembly

Assemble the vacuum cleaner by connecting the main motor, extension tube, and motorized brush head. Ensure all connections click securely into place. Attach desired accessories like the 2-in-1 brush or crevice nozzle for specific cleaning tasks.

### 5.2 Initial Charging

Before first use, fully charge the vacuum cleaner's battery. Connect the adapter to the charging port on the main motor and plug it into a power outlet. The battery indicator lights will show the charging status. A full charge typically takes approximately 4 hours.



Figure 5.1: Battery Specifications and Charging

## 6. OPERATING INSTRUCTIONS

### 6.1 Power On/Off and Suction Modes

Press the power button to turn the vacuum cleaner on or off. Use the mode selection button to switch between the two available suction modes: Standard Mode (20000Pa) for everyday cleaning and Max Mode (30000Pa) for tougher debris.



Figure 6.1: Suction Modes for Various Surfaces

## 6.2 Using Attachments

The vacuum cleaner can be used in stick mode for floors and carpets, or converted to a handheld vacuum by detaching the extension tube and motorized brush. Attach the 2-in-1 dusting brush for delicate surfaces like curtains or keyboards, and the crevice nozzle for tight spaces and corners.

Your browser does not support the video tag.

Video 6.1: Demonstration of the BSNOW Cordless Vacuum Cleaner's efficient performance and versatility with attachments.

## 6.3 Maneuvering and LED Lights

The flexible swivel head allows for easy navigation around furniture and into tight spaces. The integrated LED lights on the motorized brush illuminate dark areas, ensuring no dust or debris is missed.

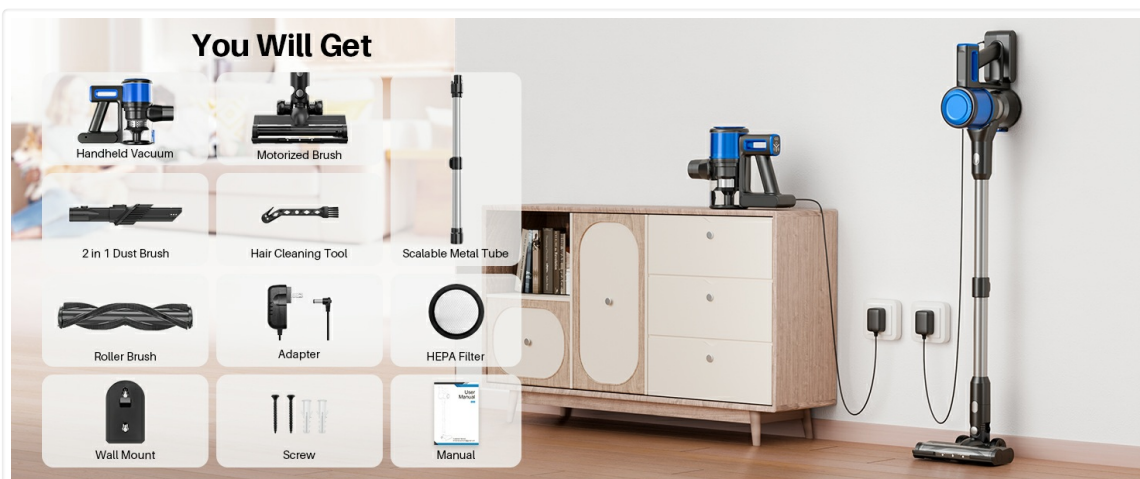


Figure 6.2: Flexible Swivel and LED Floor Lamps

# 7. MAINTENANCE

Regular maintenance ensures optimal performance and extends the lifespan of your vacuum cleaner.

### 7.1 Emptying the Dust Cup

The dust cup features a one-touch dump design. Position the dust cup over a trash bin and press the release button to empty its contents hygienically.

### 7.2 Cleaning the Filter

To maintain suction power and air quality, regularly clean the filter system. Rotate and remove the dust cup from the main motor. Remove the filter components (HEPA filter, stainless steel filter, sponge filters). Rinse the HEPA and mesh shell under running water. Allow all filter components to air dry completely for at least 24 hours before reassembling. **Note: Never immerse the main motor or dust cup in water.**

### 7.3 Cleaning the Roller Brush

Periodically check the roller brush for tangled hair or debris. Open the side cover of the motorized brush head, take out the roller brush, and remove any tangled hair. Replace the brush and secure the side cover. **Note: Never immerse the Motorized Brush in water.**

## 8. TROUBLESHOOTING

If you encounter issues with your BSNAW Cordless Vacuum Cleaner, refer to the following common troubleshooting steps:

Problem	Possible Cause	Solution
Vacuum does not turn on.	Battery is depleted or not properly installed.	Charge the battery fully. Ensure the battery is securely connected to the main motor.
Low suction power.	Dust cup is full, filters are clogged, or blockage in the nozzle/tube.	Empty the dust cup. Clean all filters as per Section 7.2. Check for and remove any blockages in the brush head, extension tube, or main motor inlet.
Roller brush stops spinning.	Hair or debris tangled in the brush, or an obstruction.	Turn off the vacuum. Clean the roller brush as per Section 7.3, removing any obstructions.
Short battery runtime.	Battery not fully charged, or operating continuously in Max Mode.	Ensure the battery is fully charged (approx. 4 hours). Use Standard Mode for longer runtime. Battery performance may decrease over time with prolonged use.

## 9. SPECIFICATIONS

Feature	Detail
Brand	BSNAW
Model Name	XL-613H (N502)
Suction Power	Up to 30000Pa (Max Mode)
Battery Capacity	6 * 2200mAh Lithium Ion (included)
Runtime	Up to 45 minutes (Min Suction Mode)
Charging Time	Approx. 4 hours
Filter Type	HEPA Filter (5-stage filtration system)
Dust Cup Capacity	1 Kilogram (approx.)
Noise Level	<65dB
Item Weight	6.76 pounds
Product Dimensions	30"L x 10"W x 15"H
Power Source	Battery Powered
Special Features	Lightweight, Powerful Suction, Low-Noise, Extension hose, High-efficiency Filtration, Flexible Head, Telescopic Tube, Large Capacity Dust Cup, Ideal for Hard Floors and Carpets, HEPA Filtration, LED Headlight

## 10. WARRANTY AND SUPPORT

BSNAW prioritizes customer satisfaction and offers a lifetime customer service guarantee and exchange service. For any issues or inquiries regarding your vacuum cleaner, please contact BSNAW customer support. Enjoy a long-term warranty to maximize your satisfaction.

For support, please refer to the contact information provided with your purchase or visit the official BSNAW store on Amazon: [BSNAW Store](#)

