

Herdio HE-802WBT

Herdio HE-802WBT 8-Inch Outdoor Bluetooth Speakers User Manual

Model: HE-802WBT | Brand: Herdio

1. INTRODUCTION

Thank you for choosing the Herdio HE-802WBT 8-Inch Outdoor Bluetooth Speakers. This manual provides essential information for the safe and efficient use of your speakers, including setup, operation, maintenance, and troubleshooting. Please read this manual thoroughly before installation and operation, and retain it for future reference.

2. SAFETY INSTRUCTIONS

- **Power Source:** Use only the provided power adapter. Ensure the power supply voltage matches the speaker's requirements.
- **Water Exposure:** While these speakers are IP44 waterproof, they are designed to withstand rain and splashes, not submersion. Do not immerse the speakers in water.
- **Placement:** Install speakers securely using the provided brackets. Ensure the mounting surface can support the weight of the speakers.
- **Ventilation:** Do not block any ventilation openings. Ensure adequate airflow around the speakers.
- **Cleaning:** Disconnect power before cleaning. Use a soft, dry cloth. Avoid liquid cleaners or aerosols.
- **Servicing:** Do not attempt to service this product yourself. Refer all servicing to qualified service personnel.
- **Temperature:** Avoid exposing speakers to extreme temperatures or direct sunlight for extended periods.

3. PACKAGE CONTENTS

Verify that all items are present in your package:

- 1 x Active Speaker
- 1 x Passive Speaker
- 1 x Power Adapter
- 1 x Instruction Manual (this document)
- 1 x Speaker Cable (5 meters)
- Mounting Brackets and Hardware



Image: Contents of the Herdio HE-802WBT speaker package, including active and passive speakers, power adapter, speaker cable, and mounting hardware.

4. PRODUCT OVERVIEW AND FEATURES

The Herdio HE-802WBT speakers are designed for outdoor use, offering robust sound and durable construction. Key features include:

- **Bluetooth 5.3 Connectivity:** Provides a stable wireless connection up to 65 feet (20 meters) in open areas, compatible with all Bluetooth-enabled devices.
- **TWS (True Wireless Stereo) Pairing:** Allows two active speakers to pair wirelessly for a stereo sound experience, with a range of up to 10 meters in open space.
- **IP44 Waterproof Rating:** Marine-grade ABS housing and rustproof grille protect against rain, splashes, and humidity, ensuring durability in outdoor environments.
- **Versatile Swivel Brackets:** Heavy-duty, 180° adjustable brackets enable precise sound positioning for optimal coverage.
- **High Power Output:** 600W maximum output (for a pair) delivers clear stereo sound suitable for large areas over 1000 sq ft (100 m²).
- **Reset Button:** Located on the back of the master unit for restoring default settings.

IPX4 Waterproof for Patio and Swimming Pool



Image: Herdio outdoor speakers installed near a swimming pool, highlighting their IP44 waterproof design suitable for patio and pool areas.



Bluetooth 5.3 Wireless Connectivity

Image: A family enjoying music in a living space, demonstrating the Bluetooth 5.3 wireless connectivity of the speakers, controlled via a smartphone.

5. INSTALLATION

5.1 Speaker Placement

For optimal sound projection, place active speakers approximately 8 feet (2.4 meters) apart, slightly above ear level. Passive speakers can be positioned further away (within 16.4 feet / 5 meters) but must connect to the active unit. These speakers are ideal for large areas such as conference rooms, gyms, auditoriums, churches, commercial venues, spacious backyards, and patios.

FILLS 1000+ FT²/100 M²+ OPEN SPACES.

Don't let your music get lost outdoors
or get distortion in small areas.



Image: Herdio speakers installed on a house exterior, illustrating sound coverage for a large outdoor space, indicating suitability for areas over 1000 sq ft.

5.2 Wiring Instructions

The system includes one active speaker and one passive speaker. The active speaker requires power and connects to your Bluetooth device. The passive speaker connects to the active speaker via the supplied speaker cable.

1. Connect the power adapter to the active speaker.
2. Identify the positive (+) and negative (-) terminals on both speakers. The red wire connects to the positive (+) terminal, and the black wire connects to the negative (-) terminal.
3. Press the release tab on the push-in terminal block, insert the speaker wire, and release the tab to secure the connection. Ensure all connections are secure and wires are not loose.

How to Use?

Power Adapter

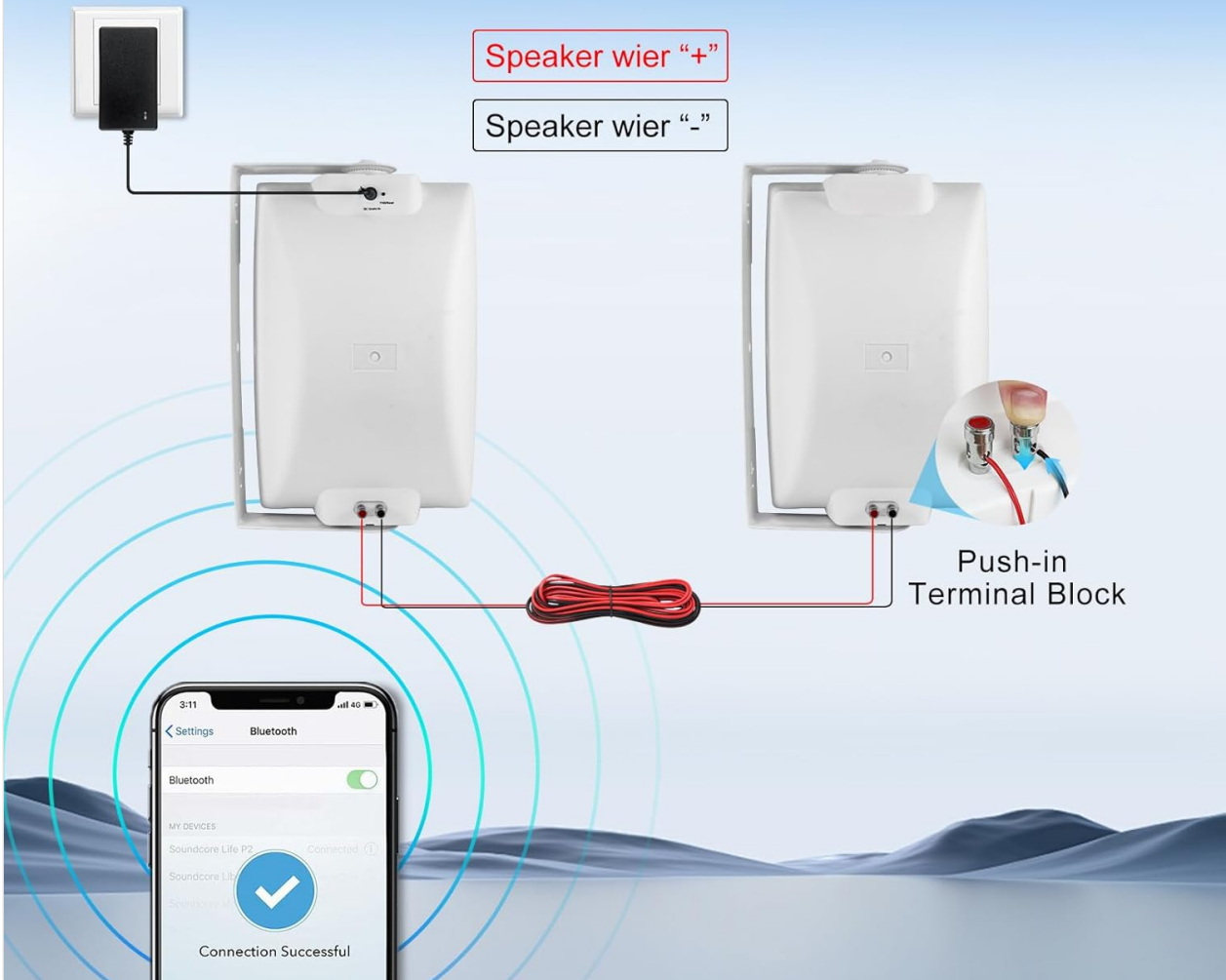


Image: A wiring diagram illustrating the connection of the active speaker to a power adapter and a Bluetooth device, and the passive speaker to the active speaker via a speaker cable.

<p>Power Adapter</p>			<p>180°</p>
<p>Install Speaker Placement Install Speaker Placement Space speakers approximately 8 feet (≈2.4m) apart, slightly above ear level for balanced sound projection. Active speakers should be placed near a power source; passive speakers can be positioned farther away (within 5m / 16.4ft) but must connect to the Active unit.</p>	<p>Wiring Instructions Connect the red speaker wire to the (+) positive terminal and the black wire to the (-) negative terminal. Installation Steps: Press the red wire into the (+) positive terminal (push-release type). Press the black wire into the (-) negative terminal (push-release type). Ensure all connections are secure and wires are not loose.</p>	<p>Placing Speakers If your application requires the speaker to be mounted, please follow these directions. Using the appropriate screws (not included) mount the bracket. Attach the speakers to the brackets using the large plastic knobs supplied.</p>	<p>Mounting To install the bracket on the speaker. Screw the bracket knobs into the cabinet. Point the speaker toward the listening area. Once the direction of the speaker has been determined, tighten the bracket knobs securely. When possible tilt the speakers down to increase longevity and prevent from the weather elements.</p>

Image: A four-panel illustration detailing speaker installation: optimal placement, wiring instructions for the push-in terminal block, how to place speakers onto brackets, and how to mount and adjust the speakers.

5.3 Mounting

The speakers come with adjustable wall mount brackets for flexible installation.

1. Securely fix the bracket to your desired wall type using appropriate screws (not included).
2. Mount the speaker onto the bracket.
3. Adjust the speaker orientation using the large plastic knobs on the side to direct sound where desired. The brackets allow for 180° adjustment.
4. For outdoor longevity, tilt the speakers slightly downwards to prevent water accumulation.



Image: A visual guide showing the speaker's dimensions, the 180-degree adjustable angle wall mount brackets, and a close-up of the push-in terminal block for wiring.

Simple, Secure Installation



① Fixing Bracket securely



② Mount Speaker



③ Adjust Speaker Orientation

Secure screw fixing for various wall types.



Image: A three-step guide demonstrating simple and secure installation: (1) Fixing the bracket securely, (2) Mounting the speaker, and (3) Adjusting the speaker orientation.

6. OPERATING INSTRUCTIONS

6.1 Bluetooth Pairing

1. Ensure the active speaker is powered on.
2. On your Bluetooth-enabled device (smartphone, tablet, PC), go to the Bluetooth settings.
3. Search for available devices and select "Herdio HE-802WBT" to connect.
4. Once connected, you will hear an audible confirmation, and the Bluetooth indicator light on the speaker will stabilize.

6.2 TWS (True Wireless Stereo) Pairing

To achieve true wireless stereo sound with two active speakers:

1. Ensure both active speakers are powered on and not connected to any other Bluetooth device.
2. On the back of one active speaker (the master unit), locate and press the TWS button.
3. The speakers will automatically search for and pair with each other. A successful TWS connection will be indicated by an audible prompt.
4. Once TWS paired, connect your Bluetooth device to the master speaker as described in Section 6.1.



Image: A diagram showing two active speakers and two passive speakers, with one active speaker connected to a power adapter and a Bluetooth device, and the TWS pairing button highlighted for connecting multiple speaker sets.

6.3 Reset Function

To restore the speakers to their factory default settings, press and hold the TWS/Reset button on the back of the master unit for 3 seconds.

6.4 Volume Control

The volume of the speakers is controlled directly by your connected Bluetooth device.

7. CARE AND MAINTENANCE

- **Cleaning:** Use a soft, damp cloth to wipe the speaker surfaces. Avoid harsh chemicals or abrasive cleaners.
- **Weather Protection:** While waterproof, regular inspection for debris or blockages in the grille is recommended. In extreme weather conditions (e.g., heavy storms, prolonged freezing temperatures), consider temporary indoor storage if possible to maximize lifespan.
- **Connections:** Periodically check all wiring connections to ensure they are secure and free from corrosion.

8. TROUBLESHOOTING

Refer to the table below for common issues and their solutions:

Problem	Cause	Action
NO POWER	Power connection might be loose. Power adapter might be damaged.	Check if power adapter is falsely wired to power connector. Check if the power light is on.
HAS POWER BUT NO SOUND	Wrong positive and negative connection. Speaker wiring might be loose.	Make sure the speaker red (+) connect to amplifier red (+) and the black (-) to the black (-). Check the speaker wiring is falsely wired or not.
HAS POWER BUT BLUETOOTH NOT CONNECT	Power connection might be loose. Power adapter might be damaged.	Check if power adapter is falsely wired to power connector. Check if the power light is on.

TROUBLE SHOOTING

NO POWER

Cause: Power connecting might be loose.
Action: Check if power adaptor is falsenly wired to power connector.
Cause: Power adaptor might be damaged.
Action: Check if the power light is on.

HAS POWER BUT NO SOUND

Cause: Wrong positive and negative connection.
Action: Make sure the speaker red (+) connect to amplifier red(+) and the black (-) to the black (-).
Cause: Speaker wiring might be loose.
Action: Check the speaker wiring is falsenly wired or not.

HAS POWER BUT BLUETOOTH NOT CONNECT

Cause: Power connecting might be loose.
Action: Check if power adaptor is falsenly wired to power connector.
Cause: Power adaptor might be damaged.
Action: Check if the power light is on.



Image: A troubleshooting guide detailing common issues like no power, power but no sound, and power but no Bluetooth connection, along with their causes and recommended actions.

9. TECHNICAL SPECIFICATIONS

Feature	Specification
Product Model	HE-802WBT
Bluetooth Version	Bluetooth 5.3
Max Power	2 * 300W (600W total for a pair)
Rated Power	2 * 80W
Sensitivity	88 dB
Waterproof Rating	IP44
Frequency Response	30Hz – 27KHz
Impedance	8 ohms
Audio Power	AC 100-240V or DC 19V3
Woofer	8" Injection Molded PP ConeButy Rubber Surround
Tweeter	1" PET Dome
Item Dimensions (D x W x H)	10.63"D x 17.72"W x 9.45"H (approx. 27cm x 45cm x 24cm)
Item Weight	13.18 Kilograms (for the pair)



Herdio

Product model:	HE-802WBT
Bluetooth version:	Bluetooth 5.3
Max Power:	2 * 300 Max Power
Rated Power:	2 * 80 Power
Sensitivity:	88 dB
Waterproof Rating:	IPX4
Frequency Response:	30Hz – 27kHz
Impedance:	8 ohms
Audio Power:	AC 100-240V or DC 19V3
Woofer:	8" Injection Molded PP Cone Buty Rubber Surround
Tweeter:	1" PET Dome

Image: A table summarizing the technical specifications of the Herdio HE-802WBT speakers, including model, Bluetooth version, power, sensitivity, waterproof rating, frequency response, impedance, audio power, woofer, and tweeter details.

Product Dimension

(LxWx H): 16.33"x 9.44"x 10.6"



Image: A diagram showing the length, width, and height dimensions of the Herdio HE-802WBT speaker in both inches and centimeters.

10. WARRANTY INFORMATION

This product comes with a **Limited Warranty**. Please refer to the warranty card included in your package or contact Herdio customer support for specific terms and conditions.

© 2026 Herdio. All rights reserved.