



[Manuals.plus](#) /

› [Weather Guard](#) /

› Weather Guard 173-5-04 Aluminum Wheel Well Truck Tool Box User Manual

Weather Guard 173-5-04

Weather Guard 173-5-04 Aluminum Wheel Well Truck Tool Box User Manual

Model: 173-5-04

[Overview](#)

[Setup](#)

[Operation](#)

[Maintenance](#)

[Troubleshooting](#)

[Specifications](#)

[Warranty &](#)

[Support](#)

1. PRODUCT OVERVIEW

The Weather Guard Model 173-5-04 is an aluminum wheel well truck tool box designed for installation on the passenger side of a truck bed. This unit provides 3.4 cubic feet of secure storage capacity, utilizing the space above and behind the wheel well. It features a durable Gloss Black ARMOR TUF Powder Coat finish for enhanced longevity and resistance to environmental factors. The design incorporates a robust lock-and-latch system for security and a full weather seal to protect contents from moisture and dust.

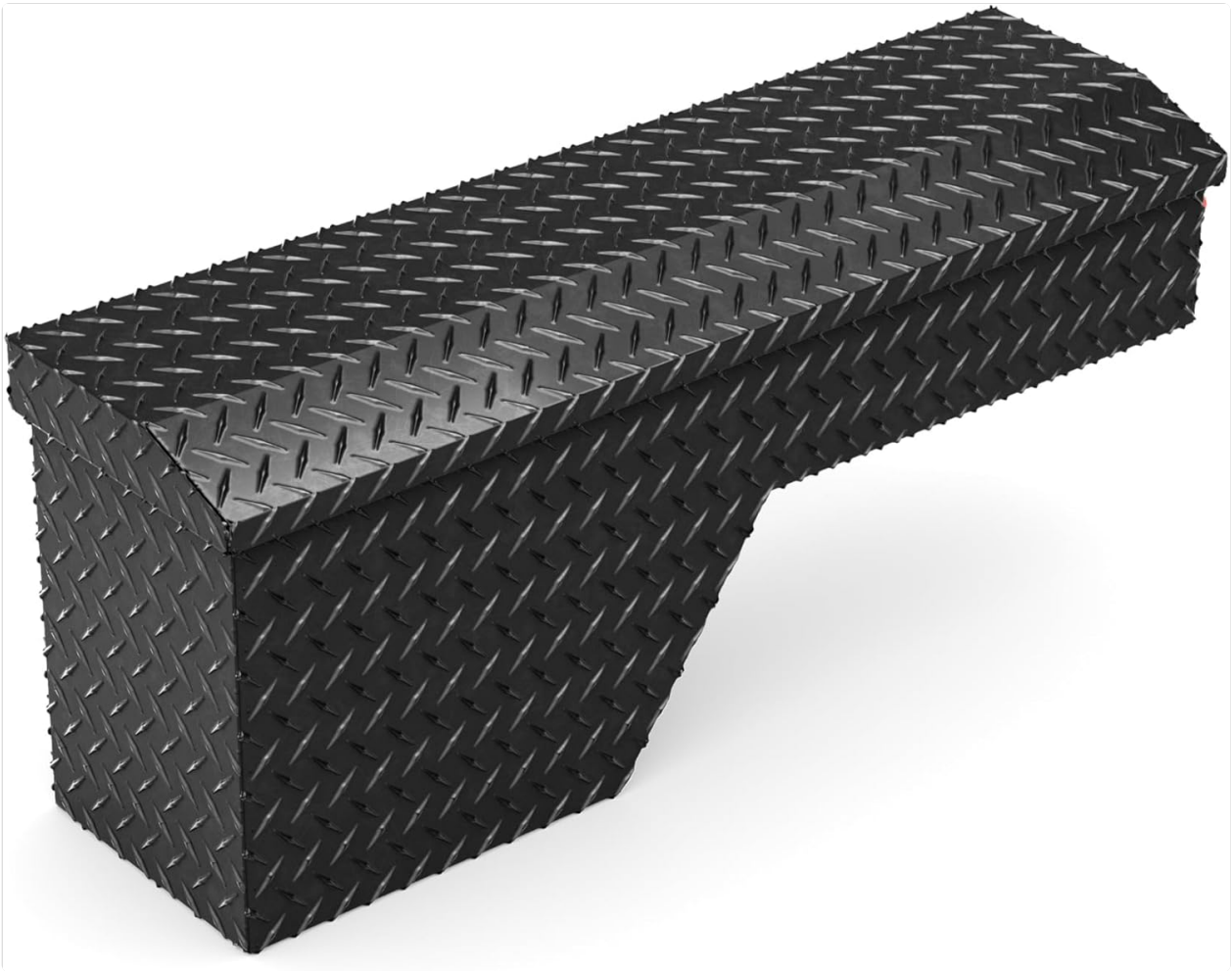


Figure 1: Weather Guard 173-5-04 Aluminum Wheel Well Truck Tool Box, passenger side view.

2. SETUP AND INSTALLATION

Proper installation is crucial for the security and functionality of your Weather Guard tool box. While specific vehicle requirements may vary, the general steps below outline the installation process.

2.1. Required Tools (Typical)

- Drill
- Drill bits appropriate for truck bed material
- Wrenches or socket set
- Measuring tape
- Marker or pencil
- Safety glasses and gloves

2.2. Installation Steps

1. **Position the Tool Box:** Carefully place the tool box in the desired passenger side wheel well location within the truck bed. Ensure it is level and does not interfere with the truck's operation or other accessories.
2. **Mark Mounting Points:** Using the pre-drilled holes on the tool box as a guide, mark the corresponding drilling locations on the truck bed.
3. **Drill Pilot Holes:** Remove the tool box and drill pilot holes at the marked locations. Ensure drill bits are suitable for the truck bed material and avoid drilling into critical vehicle components.

4. **Secure the Tool Box:** Reposition the tool box and align the mounting holes. Use appropriate hardware (not included, refer to manufacturer's recommendations for specific fasteners) to securely fasten the tool box to the truck bed. Tighten all fasteners firmly but do not overtighten.
5. **Verify Security:** After installation, attempt to move the tool box to ensure it is rigidly mounted and does not shift during vehicle movement.



Figure 2: Illustration of enhanced attachment points for secure installation.

3. OPERATION

The Weather Guard 173-5-04 tool box is designed for ease of access and secure storage.

3.1. Opening the Tool Box

To open the tool box, locate the red push-button lock mechanism. Press the button to release the latch. Lift the lid to access the storage compartment.



Figure 3: Close-up view of the Weather Guard logo and the red push-button lock mechanism.

3.2. Locking the Tool Box

To lock the tool box, close the lid firmly until the latch engages. The red push-button will retract, indicating the box is locked. The automotive-grade lock-and-latch system provides security against theft. This model features compatibility with the Weather Guard ONE KEY system, allowing multiple Weather Guard boxes to be operated with a single key.



ARMOR TUF®

POWDER COAT FINISH

MAINTAINS THAT *NEW LOOK* FOR YEARS

Figure 4: Illustration of ONE KEY compatibility for managing multiple tool boxes with a single key.

4. MAINTENANCE

Regular maintenance ensures the longevity and optimal performance of your tool box.

4.1. Cleaning

The ARMOR TUF Powder Coat finish is designed for durability. Clean the exterior with mild soap and water, then rinse thoroughly. Avoid abrasive cleaners or solvents that could damage the finish. Periodically inspect for any scratches or chips in the coating and touch up as needed to prevent corrosion.



Figure 5: The ARMOR TUF Powder Coat finish provides long-lasting durability and appearance.

4.2. Lock and Latch Mechanism

Periodically lubricate the lock cylinder and latch mechanism with a graphite-based lubricant or a silicone spray to ensure smooth operation. Avoid using oil-based lubricants as they can attract dirt.

4.3. Weather Seal

Inspect the full weather seal around the lid for any signs of wear, cracking, or damage. A compromised seal can lead to water intrusion. Replace the seal if necessary to maintain weather resistance.



Figure 6: The precision fit and full weather seal protect contents from the elements.

5. TROUBLESHOOTING

This section addresses common issues you might encounter with your tool box.

Problem	Possible Cause	Solution
Lid difficult to open or close	Misalignment, debris in latch, lack of lubrication	Check for obstructions. Lubricate the latch mechanism. Verify proper installation and alignment.
Lock mechanism sticking	Dirt or corrosion in lock cylinder, lack of lubrication	Apply graphite lubricant to the lock cylinder. Clean any visible debris.
Water inside the box	Damaged or improperly seated weather seal, lid not fully closed	Ensure the lid is fully closed and latched. Inspect the weather seal for damage and replace if necessary.
Tool box feels loose	Mounting hardware loose	Inspect and tighten all mounting hardware.

6. SPECIFICATIONS

Key specifications for the Weather Guard 173-5-04 Aluminum Wheel Well Truck Tool Box:

- **Manufacturer:** Weather Guard
- **Part Number:** 173-5-04
- **Item Weight:** 41.5 pounds
- **Product Dimensions (L x W x H):** 46.63 x 15.43 x 16.4 inches
- **Material:** Aluminum
- **Color:** Gloss Black
- **Storage Capacity:** 3.4 cubic feet
- **Special Features:** Lockable, Rust Resistant, Full Weather Seal, ARMOR TUF Powder Coat
- **UPC:** 783965072922

7. WARRANTY & SUPPORT

7.1. Warranty Information

For detailed warranty information regarding your Weather Guard 173-5-04 Aluminum Wheel Well Truck Tool Box, please refer to the official Weather Guard website or contact their customer service department. Warranty terms and conditions may vary.

7.2. Customer Support

If you require further assistance, have questions about installation, operation, or maintenance, or need to report a product issue, please contact Weather Guard customer support directly. You can typically find contact information, including phone numbers and online support portals, on the official Weather Guard website.

Visit the official Weather Guard store for more information: [Weather Guard Store](#)