



[Manuals.plus](#) /

› [Mova](#) /

› Mova E30 Pro Plus Robot Vacuum and Mop: Instruction Manual

Mova E30 Pro Plus

Mova E30 Pro Plus Robot Vacuum and Mop: Instruction Manual

Model: E30 Pro Plus | Brand: Mova

INTRODUCTION

The Mova E30 Pro Plus is an advanced robot vacuum and mop designed for efficient and thorough home cleaning. It features powerful 19000Pa suction, a DuoRoller brush for anti-tangle performance, and a self-emptying base station for up to 90 days of hands-free operation. The extendable side brush ensures comprehensive edge cleaning, while smart navigation and app/voice control offer convenient management of your cleaning tasks.

WHAT'S IN THE BOX

Carefully unpack all components and ensure everything is present before setup.

- Robot Vacuum x 1
- Base Station x 1
- User Manual x 1
- Main Brush & Brush Guard x 1 (pre-installed)
- Side Brush x 1 (pre-installed)
- Base Station Ramp Extension Plate x 1
- Mop Pad & Mop Pad Holder x 1 (pre-installed)
- 5L Dust Bag x 1 (pre-installed)
- Dust Box x 1 (pre-installed, including HEPA filter)



Robot Vacuum x1



Base station x 1



User Manual x 1



Main Brush & Brush Guard x 1 (pre-installed)



Side brush x 1 (pre-installed)



Base Station Ramp Extension Plate x 1



Mop Pad & Mop Pad Holder x 1 (pre-installed)



5L Dust Bag x 1 (pre-installed)



Dust Box x 1 (pre-installed, including HEPA filter)

What's in the Box

Image: All components included in the Mova E30 Pro Plus package.

The image above displays the robot vacuum, auto-empty base station, user manual, main brush, side brush, base station ramp, mop pad and holder, 5L dust bag, and dust box with HEPA filter.

Video: An unboxing demonstration of the Mova E30 Pro Plus Robot Vacuum and Mop, showing all included accessories and initial setup steps.

SETUP

1. Base Station and Ramp Installation

Place the auto-empty base station against a wall in an open area, ensuring there are no obstacles within 1.5 meters (5 feet) in front and 0.5 meters (1.6 feet) on either side. Attach the ramp extension plate to the front of the base station by aligning it and pressing down until it clicks securely into place. Connect the power cord to the back of the base station and plug it into a wall outlet. Ensure the power switch on the back of the base station is in the 'ON' position.



*5L: Based on tests in our in-house lab.

Auto Empty Base Station

Image: The Mova E30 Pro Plus robot vacuum docked with its auto-empty base station.

2. Initial Robot Placement

Place the robot vacuum onto the charging contacts of the base station. The robot will automatically power on and begin charging. For first-time use, it is recommended to fully charge the robot before its initial cleaning cycle.

3. Remove Bumper Guards

Before operating, remove any protective bumper guards or shipping materials from the robot's bumper to ensure proper obstacle detection and navigation.

4. App Connection (Optional but Recommended)

Download the Mova app from your smartphone's app store. Follow the in-app instructions to connect your robot vacuum to your home Wi-Fi network. The app allows for advanced features such as mapping, scheduling, zone cleaning, and voice control integration.

OPERATING INSTRUCTIONS

1. Starting a Cleaning Cycle

Press the Power button on the robot or use the Mova app to start a cleaning cycle. The robot will begin mapping your home using its LDS Laser navigation and 3DAdapt Obstacle Avoidance technology, ensuring efficient path planning and avoiding collisions.



3DAdapt™ Obstacle Avoidance & LDS Navigation

Image: The Mova E30 Pro Plus robot vacuum utilizing 3DAdapt Obstacle Avoidance and LDS Navigation to map and clean a room.

2. Vacuuming Function

The E30 Pro Plus features 19000Pa powerful suction, effectively removing dirt, dust, debris, and pet hair from various surfaces including carpets, hardwood, and tiles. The DuoRoller brush system is designed to prevent hair tangles, ensuring consistent performance.

46%* Suction Power Increase



Certified by in-house lab. Actual results depend on the environment.
*46%: Based on comparison with MOVA E20 Series.

19000Pa Powerful Suction*

Image: The Mova E30 Pro Plus robot vacuum demonstrating its 19000Pa powerful suction capability.

Video: A carpet cleaning test of the Mova E30 Pro Plus Robot Vacuum, demonstrating its suction power and ability to pick up debris on carpeted surfaces.

3. Mopping Function

For mopping, ensure the mop pad holder with a clean, damp mop pad is attached to the robot. Fill the water tank with clean water. The robot will automatically detect the mop pad and adjust its cleaning behavior. It will avoid carpets when the mop pad is installed, thanks to its Ultrasonic Carpet Detection with Auto Suction Boost feature.

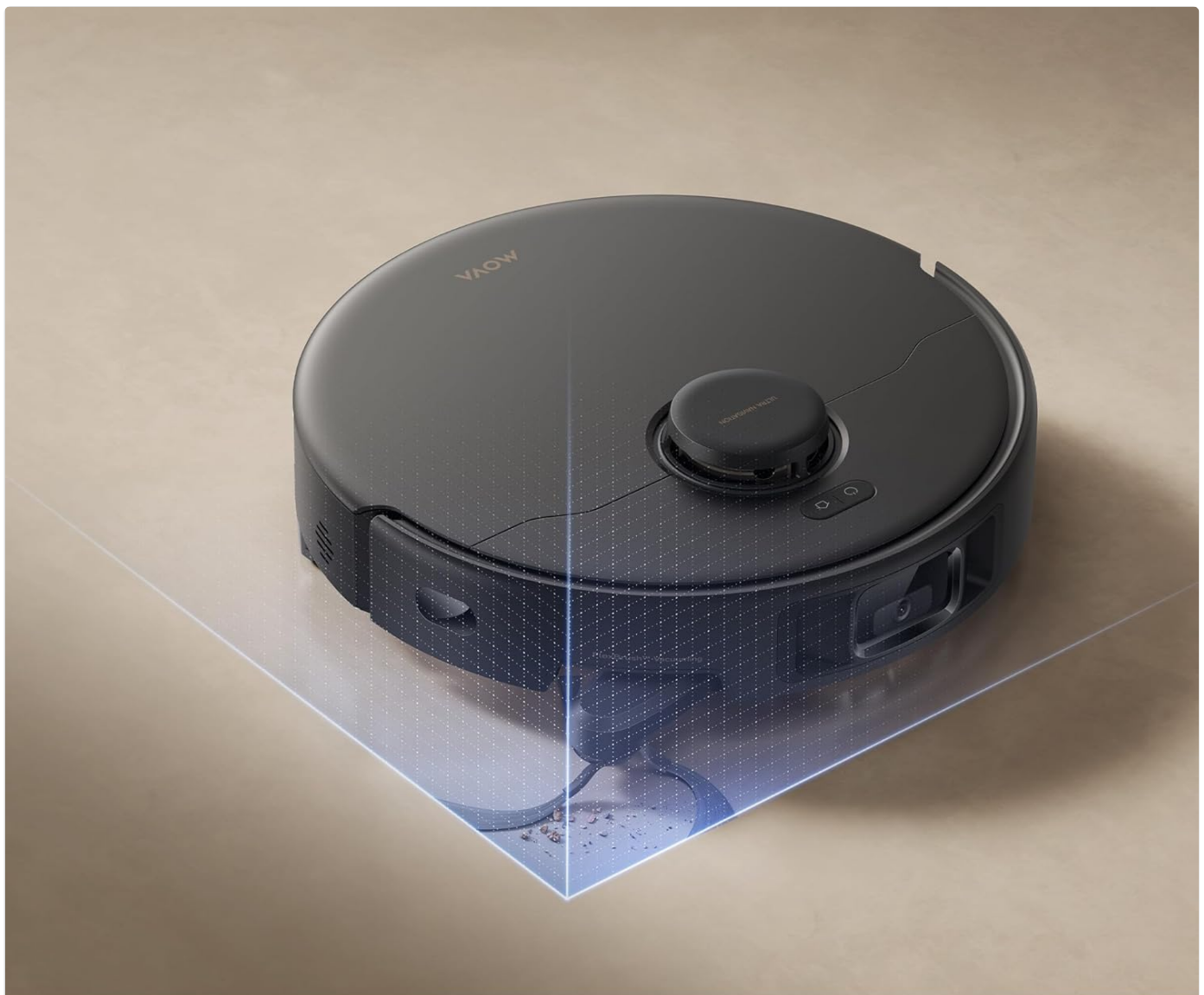


Image: The Mova E30 Pro Plus robot vacuum detecting a carpet and automatically boosting suction for deeper cleaning.

Video: A mopping test of the Mova E30 Pro Plus Robot Vacuum and Mop, showcasing its ability to clean hard floors effectively.

4. Extendable Side Brush (FlexBrush)

The robot is equipped with an extendable side brush, also known as FlexBrush, which automatically extends to reach dirt and debris in right-angle edges and tight gaps. This ensures thorough cleaning along baseboards and in corners.



Anti-tangle FlexBrush™ Vacuuming

Image: The Mova E30 Pro Plus robot vacuum demonstrating its anti-tangle FlexBrush extending to clean edges and corners.

5. Voice Control

Integrate your Mova E30 Pro Plus with smart speaker systems like Alexa or Google Assistant for convenient voice-activated cleaning commands.

MAINTENANCE

Regular maintenance ensures optimal performance and extends the lifespan of your robot vacuum.

1. Emptying the Dust Bag

The self-emptying base station automatically transfers collected debris from the robot's dust box into a 5L dust bag. This bag typically requires replacement every 90 days, depending on usage and pet hair accumulation. To replace, open the lid of the base station, remove the full dust bag, and insert a new one.

2. Cleaning the Dust Box and Filter

The robot's internal dust box and HEPA filter should be cleaned regularly. Remove the dust box from the robot, open it, and empty the contents. The filter can be gently tapped to remove dust or rinsed under running water (ensure it is completely dry before re-inserting). Refer to the user manual for detailed cleaning instructions and replacement schedules.

3. Cleaning the DuoRoller Brush

The anti-tangle DuoRoller brush combines TPU and bristled rubber brushes. Periodically remove the main brush and brush guard to inspect and clean any tangled hair or debris. Use the cleaning tool provided to cut and remove hair wrapped around the brushes.



Image: Close-up of the Mova E30 Pro Plus's Anti-tangle TroboWave DuoBrush system.

4. Cleaning the Mop Pad

After each mopping session, detach the mop pad from its holder and wash it. The mop pad is reusable and can be hand-washed or machine-washed according to the instructions in the user manual. Ensure it is completely dry before reattaching.

TROUBLESHOOTING

If you encounter issues with your Mova E30 Pro Plus, refer to the following common solutions or consult the full user manual for more detailed guidance.

Robot Not Charging

- Ensure the power cord is securely plugged into the base station and a working outlet.
- Check that the power switch on the base station is in the 'ON' position.
- Clean the charging contacts on both the robot and the base station with a dry cloth.
- Verify the robot is correctly docked with its charging contacts aligned.

Poor Cleaning Performance

- Empty the dust box and clean the filter. A clogged filter can reduce suction power.
- Clean the main brush and side brushes, removing any tangled hair or debris.
- Ensure the suction power setting in the app is appropriate for the surface being cleaned (e.g., Max for carpets).
- If mopping, ensure the mop pad is clean and sufficiently damp.

Robot Gets Stuck or Lost

- Clear obstacles such as cables, small toys, or loose rugs from the cleaning path.
- Clean the cliff sensors and obstacle avoidance sensors on the robot.
- If the robot frequently gets lost, try re-mapping your home through the Mova app.

SPECIFICATIONS

Feature	Detail
Brand	Mova
Model Name	E30 Pro Plus
Suction Power	19000Pa
Brush Type	DuoRoller Brush (Anti-Tangle)
Self-Emptying	Yes, with 5L Dust Bag (90-day capacity)
Side Brush	Extendable for Edge Cleaning
Navigation	LDS Laser Navigation, 3DAdapt Obstacle Avoidance
Carpet Detection	Ultrasonic with Auto Suction Boost
Control	App & Voice Control (Alexa, Google Assistant), Touchpad Control
Filter Type	HEPA
Battery Type	Lithium Ion
Battery Life	40 minutes (runtime may vary based on mode)
Item Dimensions (L x W x H)	18.11"L x 15.91"W x 16.61"H
Item Weight	25 Pounds

Feature	Detail
Color	Black
Surface Recommendation	Hard Floor, Carpet, Marble, Wood, Tile

WARRANTY AND SUPPORT

Warranty Information

The Mova E30 Pro Plus typically comes with a manufacturer's warranty. Please refer to the warranty card included in your product packaging or contact Mova customer service for specific details regarding coverage and duration. Extended protection plans may also be available for purchase.

- 2-Year Protection Plan (Optional)
- 3-Year Protection Plan (Optional)

Customer Support

For technical assistance, troubleshooting, or spare parts, please contact Mova customer support. Contact information can usually be found in the user manual or on the official Mova website. Have your product model and serial number ready when contacting support.